

8/17/99

HNTB HNTB NORTH CAROLINA, P.C.
343 E. Six Forks Road, Suite 200
Raleigh, North Carolina 27609
NC License No: C-1554

PROJECT REFERENCE NO.	SHEET NO.
U-6202	EC-12/CONST.12
RW SHEET NO.	
ROADWAY DESIGN ENGINEER	HYDRAULICS ENGINEER

CLEARING AND GRUBBING
EROSION CONTROL FOR
CONSTRUCTION SHEET 12

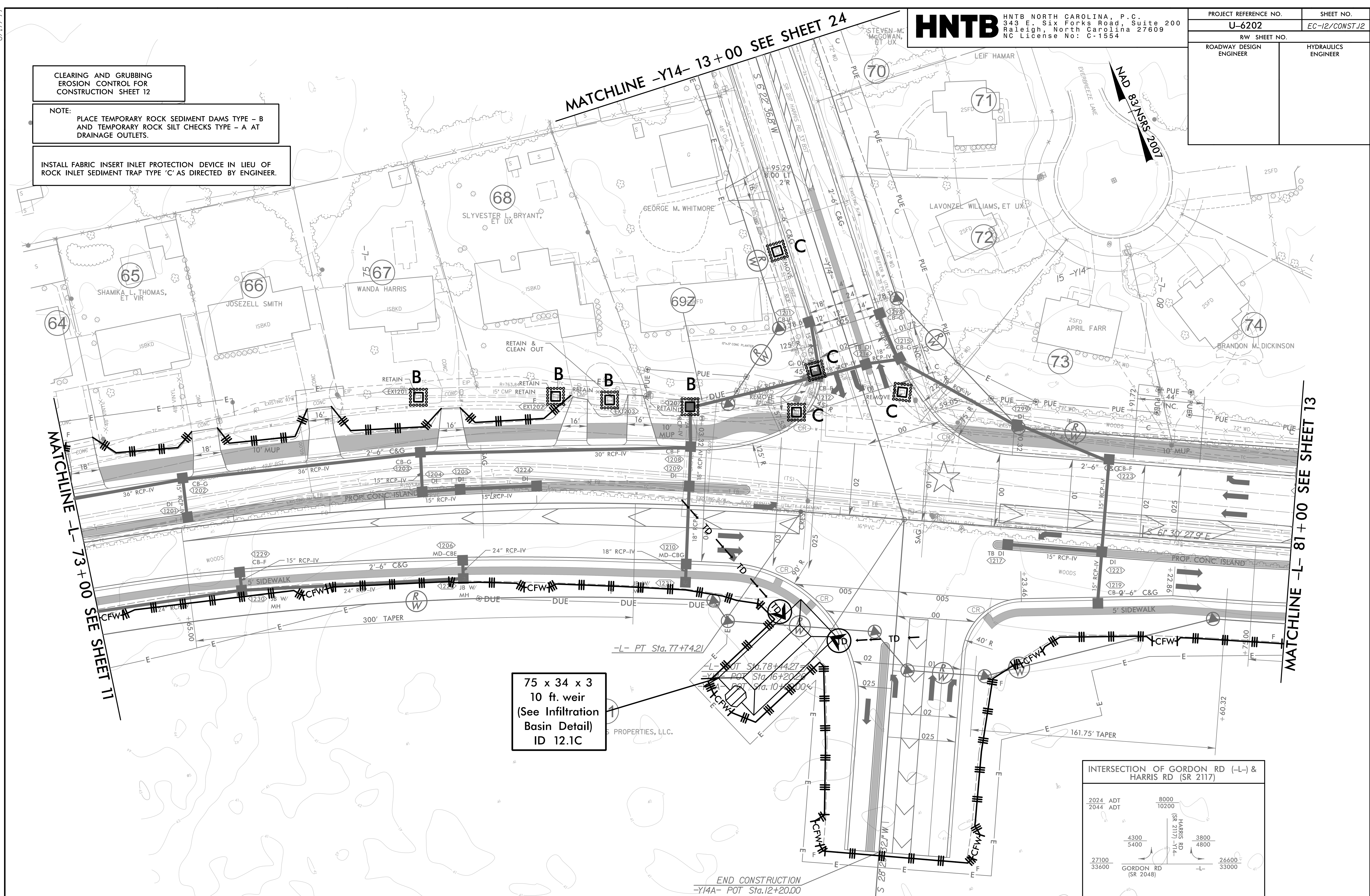
NOTE:
PLACE TEMPORARY ROCK SEDIMENT DAMS TYPE - B
AND TEMPORARY ROCK SILT CHECKS TYPE - A AT
DRAINAGE OUTLETS.

INSTALL FABRIC INSERT INLET PROTECTION DEVICE IN LIEU OF
ROCK INLET SEDIMENT TRAP TYPE 'C' AS DIRECTED BY ENGINEER.

MATCHLINE -Y14- 13+00 SEE SHEET 24

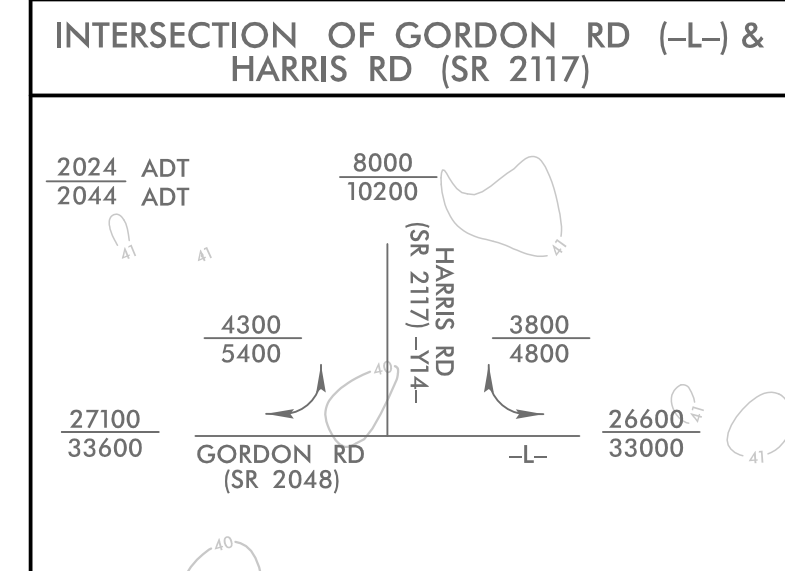
MATCHLINE -L- 73+00 SEE SHEET 11

MATCHLINE -L- 81+00 SEE SHEET 13



75 x 34 x 3
10 ft. weir
(See Infiltration
Basin Detail)
ID 12.1C

END CONSTRUCTION
-Y14A- POT Sta.12+20.00



★ EXISTING SIGNAL

NOTE:
1. ALL DRIVEWAYS HAVE 10' RADII UNLESS OTHERWISE NOTED.

FOR -L- PROFILE, SEE SHEET 28
FOR -Y14- PROFILE, SEE SHEET 35
FOR -Y14A- PROFILE, SEE SHEET 38
FOR INTERSECTION DETAIL, SEE SHEET 28-2

REVISIONS

4/17/2024
6/16/2022.EC_PSH12.dgn
HNTB