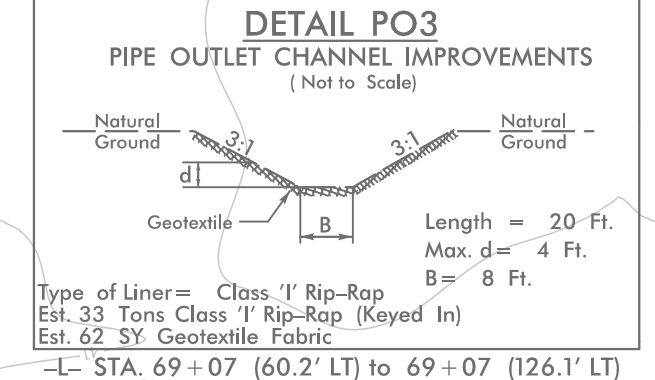
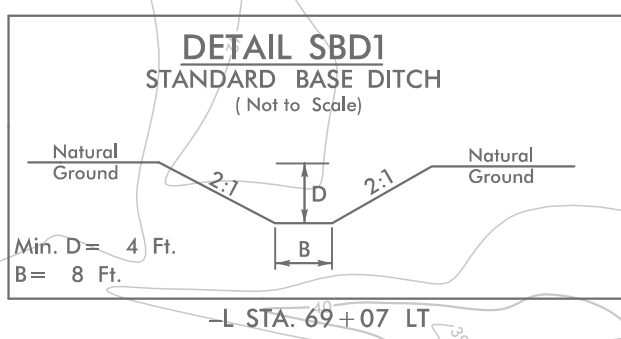


8/17/99

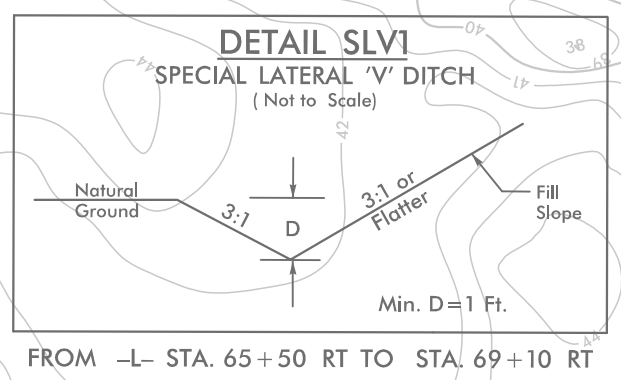
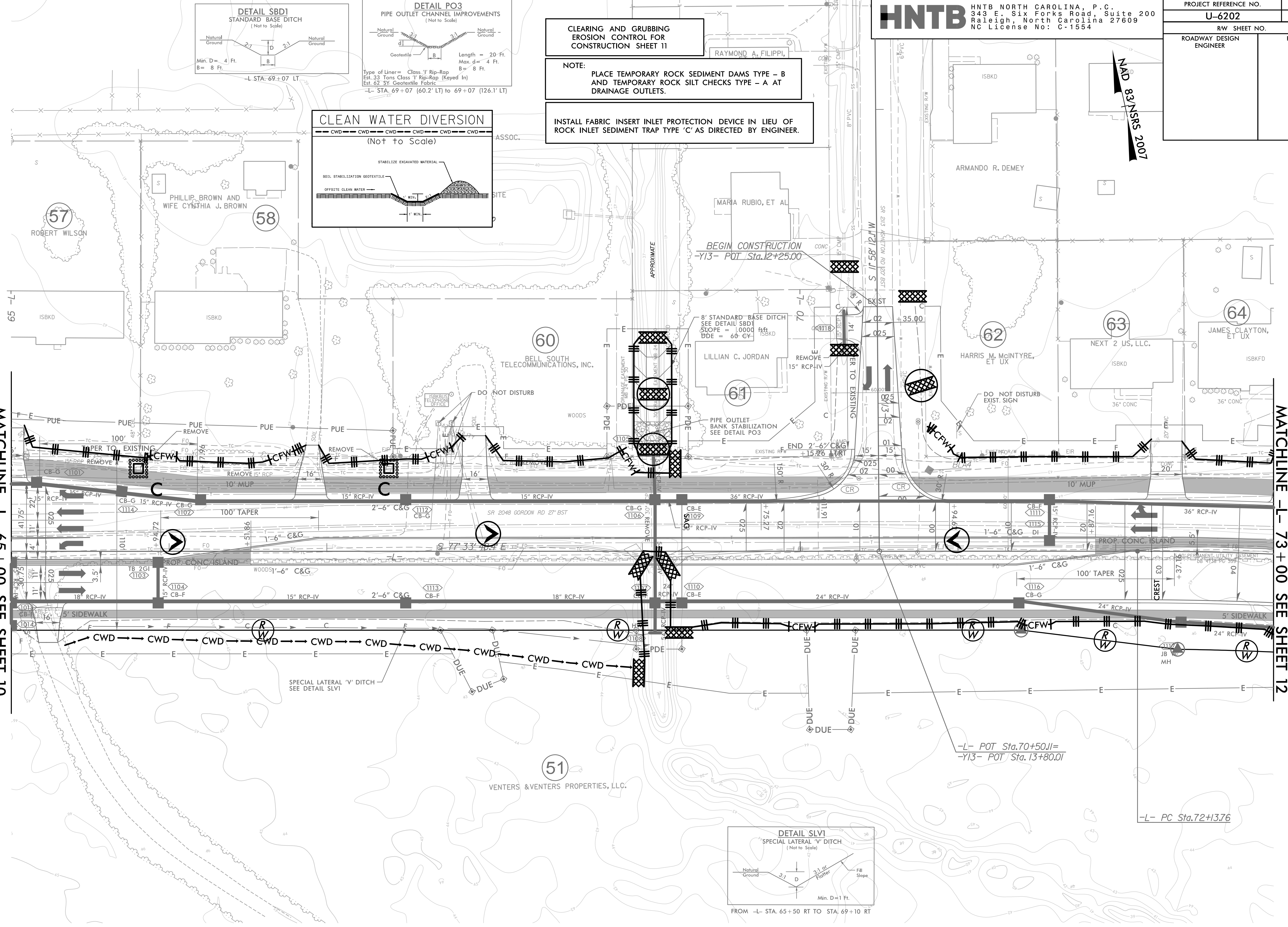
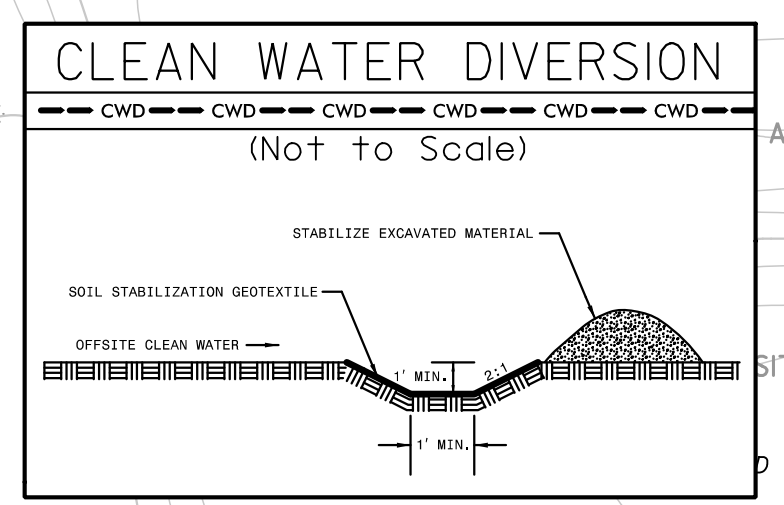
PROJECT REFERENCE NO.	SHEET NO.
U-6202	EC-II/CONST.II
RW SHEET NO.	
ROADWAY DESIGN ENGINEER	HYDRAULICS ENGINEER



**CLEARING AND GRUBBING EROSION CONTROL FOR CONSTRUCTION SHEET 11**

**NOTE:**  
 PLACE TEMPORARY ROCK SEDIMENT DAMS TYPE - B AND TEMPORARY ROCK SILT CHECKS TYPE - A AT DRAINAGE OUTLETS.

INSTALL FABRIC INSERT INLET PROTECTION DEVICE IN LIEU OF ROCK INLET SEDIMENT TRAP TYPE 'C' AS DIRECTED BY ENGINEER.



**NOTE:**  
 1. ALL DRIVEWAYS HAVE 10' RADII UNLESS OTHERWISE NOTED.

FOR -L- PROFILE, SEE SHEET 28  
 FOR -Y13- PROFILE, SEE SHEET 35

REVISIONS

4/17/2024  
 4/17/2024  
 HNTB