

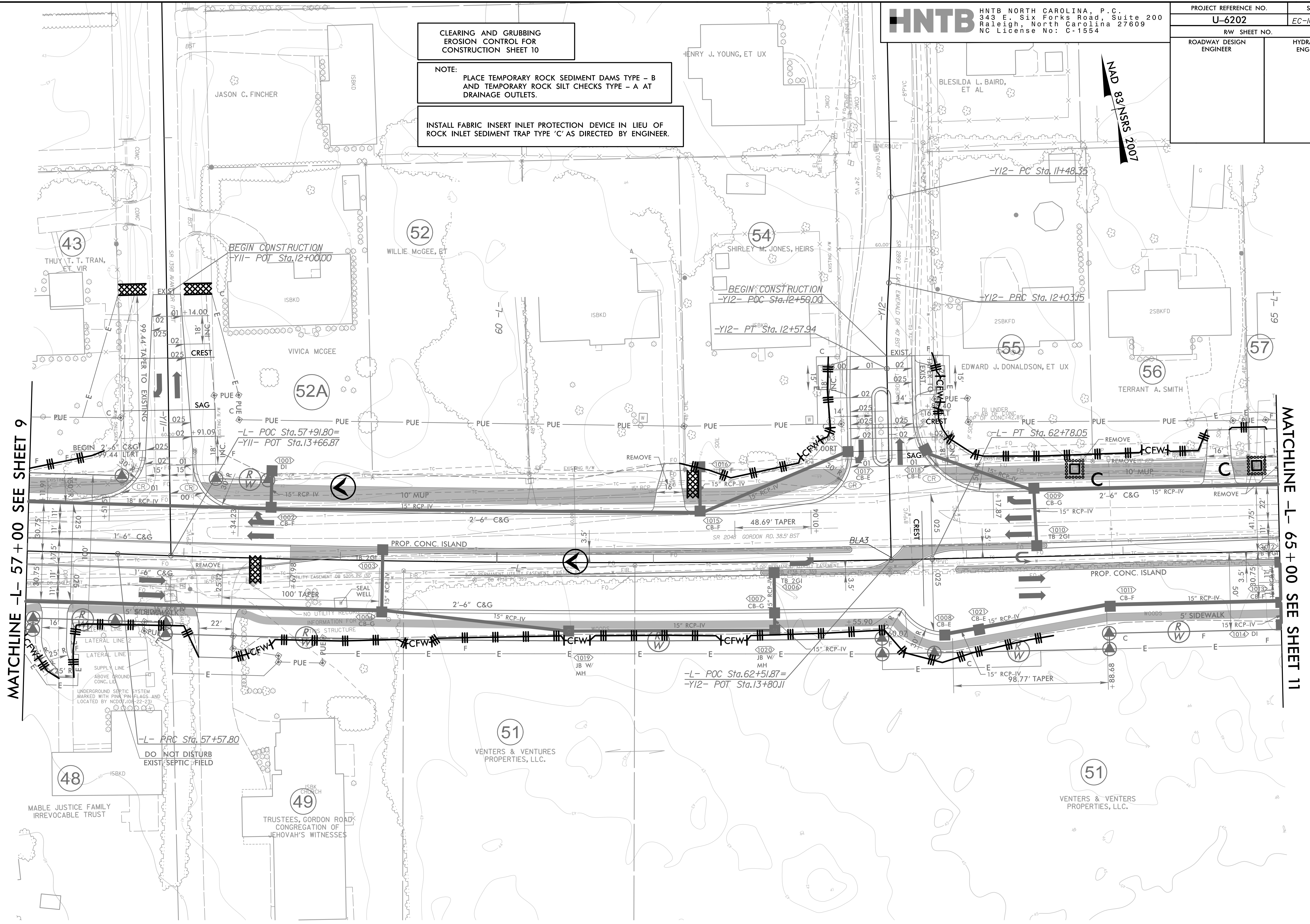
8.17/99

PROJECT REFERENCE NO.	SHEET NO.
U-6202	EC-10/CONST.10
RW SHEET NO.	
ROADWAY DESIGN ENGINEER	HYDRAULICS ENGINEER

CLEARING AND GRUBBING
 EROSION CONTROL FOR
 CONSTRUCTION SHEET 10

NOTE:
 PLACE TEMPORARY ROCK SEDIMENT DAMS TYPE - B
 AND TEMPORARY ROCK SILT CHECKS TYPE - A AT
 DRAINAGE OUTLETS.

INSTALL FABRIC INSERT INLET PROTECTION DEVICE IN LIEU OF
 ROCK INLET SEDIMENT TRAP TYPE 'C' AS DIRECTED BY ENGINEER.



MATCHLINE -L- 57 + 00 SEE SHEET 9

MATCHLINE -L- 65 + 00 SEE SHEET 11

NOTE:
 1. ALL DRIVEWAYS HAVE 10' RADII UNLESS OTHERWISE NOTED.

FOR -L- PROFILE, SEE SHEET 27
 FOR -Y11- PROFILE, SEE SHEET 34
 FOR -Y12- PROFILE, SEE SHEET 35
 FOR INTERSECTION DETAIL, SEE SHEET 2B-2

REVISIONS

4/17/2024
 162022_EC_PSH10.dgn
 HNTB