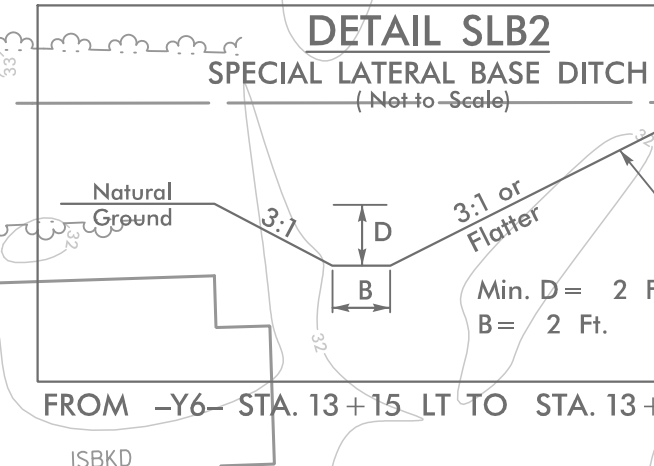
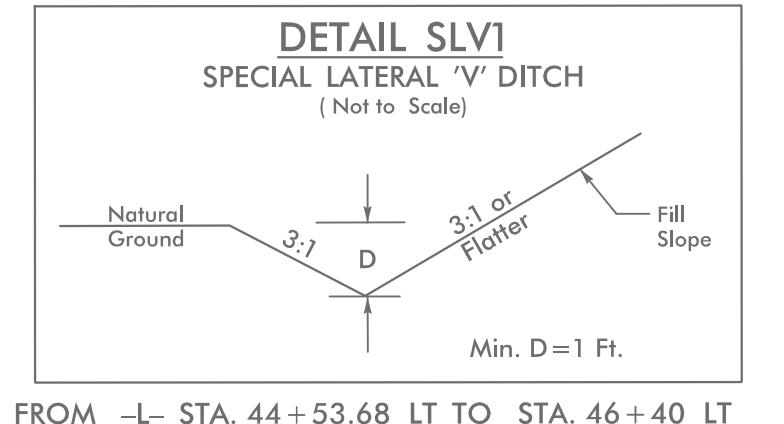


PROJECT REFERENCE NO.	SHEET NO.
U-6202	EC-8/CONST.8
RW SHEET NO.	
ROADWAY DESIGN ENGINEER	HYDRAULICS ENGINEER



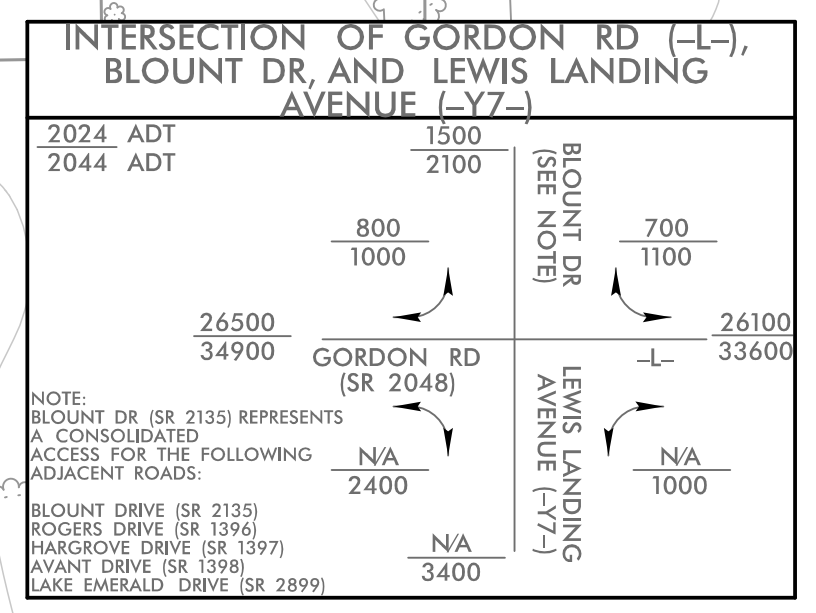
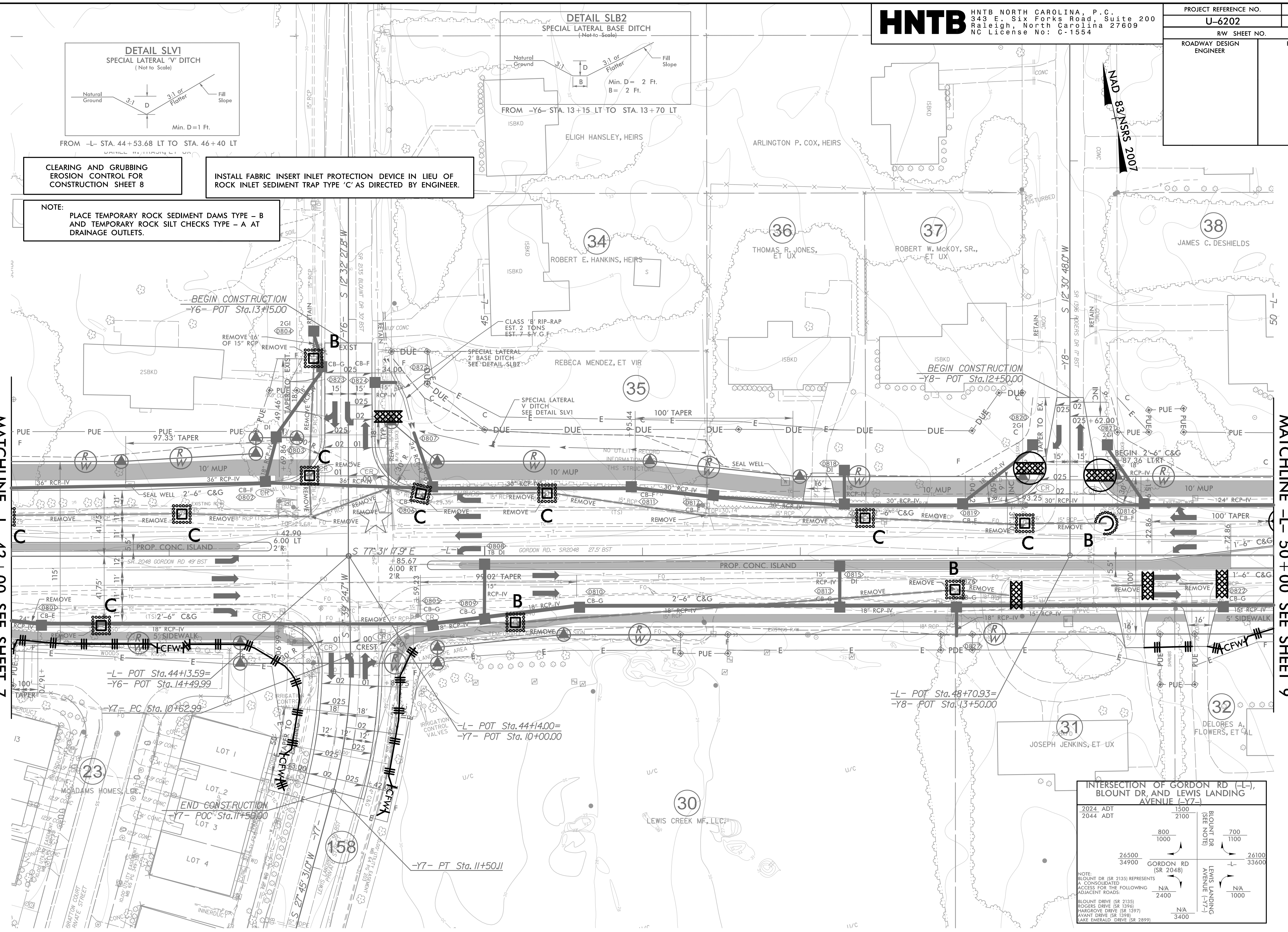
CLEARING AND GRUBBING EROSION CONTROL FOR CONSTRUCTION SHEET 8

INSTALL FABRIC INSERT INLET PROTECTION DEVICE IN LIEU OF ROCK INLET SEDIMENT TRAP TYPE 'C' AS DIRECTED BY ENGINEER.

NOTE: PLACE TEMPORARY ROCK SEDIMENT DAMS TYPE - B AND TEMPORARY ROCK SILT CHECKS TYPE - A AT DRAINAGE OUTLETS.

MATCHLINE -L- 42 + 00 SEE SHEET 7

MATCHLINE -L- 50 + 00 SEE SHEET 9



REVISIONS

NOTE:
 1. ALL DRIVEWAYS HAVE 10' RADII UNLESS OTHERWISE NOTED.

★ EXISTING SIGNAL

FOR -L- PROFILE, SEE SHEET 27
 FOR -Y6- PROFILE, SEE SHEET 33
 FOR -Y7- PROFILE, SEE SHEET 33
 FOR -Y8- PROFILE, SEE SHEET 34

4/17/2024 4:17 PM 16202.EC.PSH8.dgn HNTB