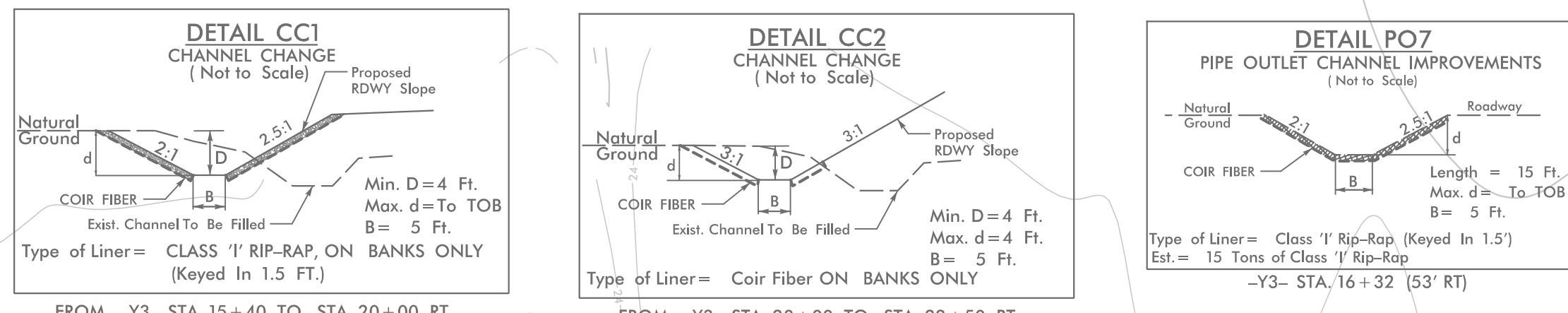


PROJECT REFERENCE NO.	SHEET NO.
U-6202	EC-5A/CONST.5A
RW SHEET NO.	
ROADWAY DESIGN ENGINEER	HYDRAULICS ENGINEER

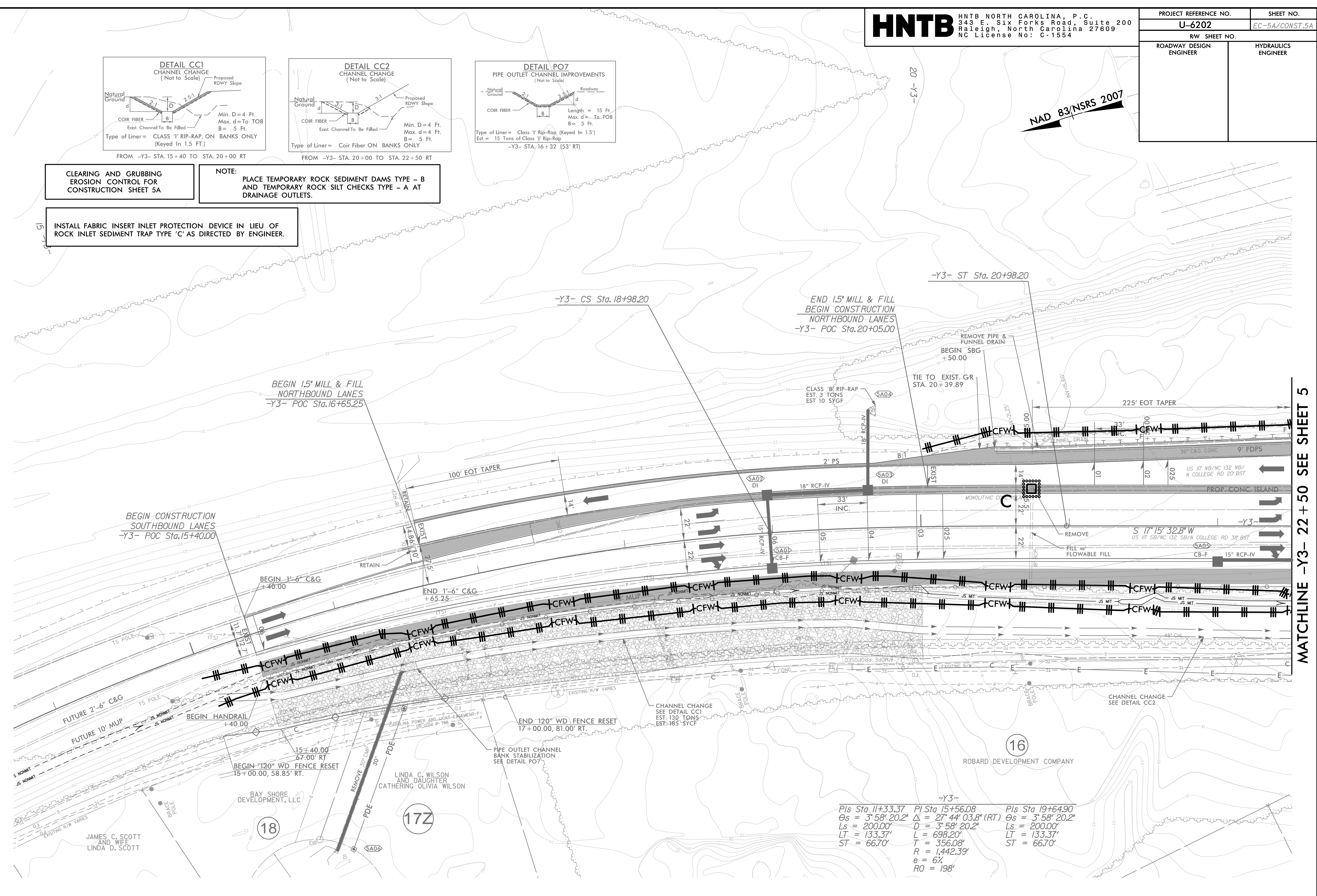


**CLEARING AND GRUBBING EROSION CONTROL FOR CONSTRUCTION SHEET 5A**

**NOTE: PLACE TEMPORARY ROCK SEDIMENT DAMS TYPE - B AND TEMPORARY ROCK SILT CHECKS TYPE - A AT DRAINAGE OUTLETS.**

**INSTALL FABRIC INSERT INLET PROTECTION DEVICE IN LIEU OF ROCK INLET SEDIMENT TRAP TYPE 'C' AS DIRECTED BY ENGINEER.**

**NAD 83/NSRS 2007**



Pls Sta 11+33.37	Pls Sta 15+56.08	Pls Sta 19+64.90
Os = 3° 58' 20.2"	Δs = 27° 44' 03.8" (RT)	Os = 3° 58' 20.2"
Ls = 200.00'	D = 3° 58' 20.2"	Ls = 200.00'
LT = 133.37'	L = 698.20'	LT = 133.37'
ST = 66.70'	T = 356.08'	ST = 66.70'
	R = 1,442.39'	
	e = 6%	
	RO = 198'	

**NOTE: 1. ALL DRIVEWAYS HAVE 10' RADII UNLESS OTHERWISE NOTED.**

REVISIONS

MATCHLINE -Y3- 22 + 50 SEE SHEET 5

4/17/2024 4:17 PM 4/17/2024 EC\_PSH-HEA.dgn