
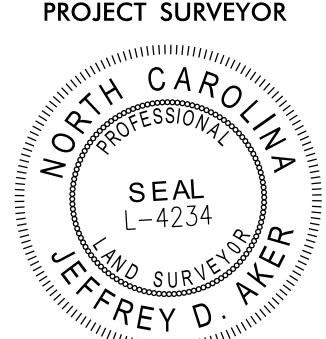
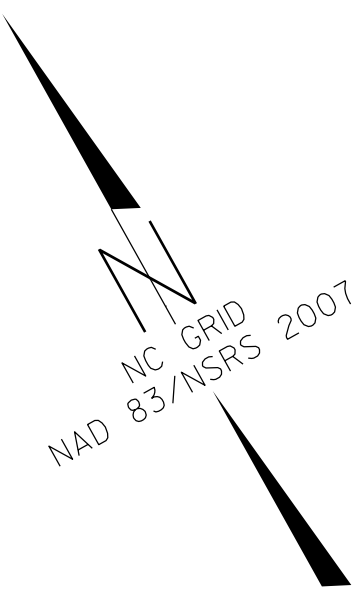


PROJECT REFERENCE NO.	SHEET NO.
U-6202	RW13
Location and Surveys	
 4300 EDWARDS MILL RD, SUITE 200, RALEIGH, NC 27612 (P) 919-233-6931	
PROJECT SURVEYOR	
 JEFFREY D. AKER	
DOCUMENT NOT CONSIDERED FINAL UNLESS ALL SIGNATURES COMPLETED	



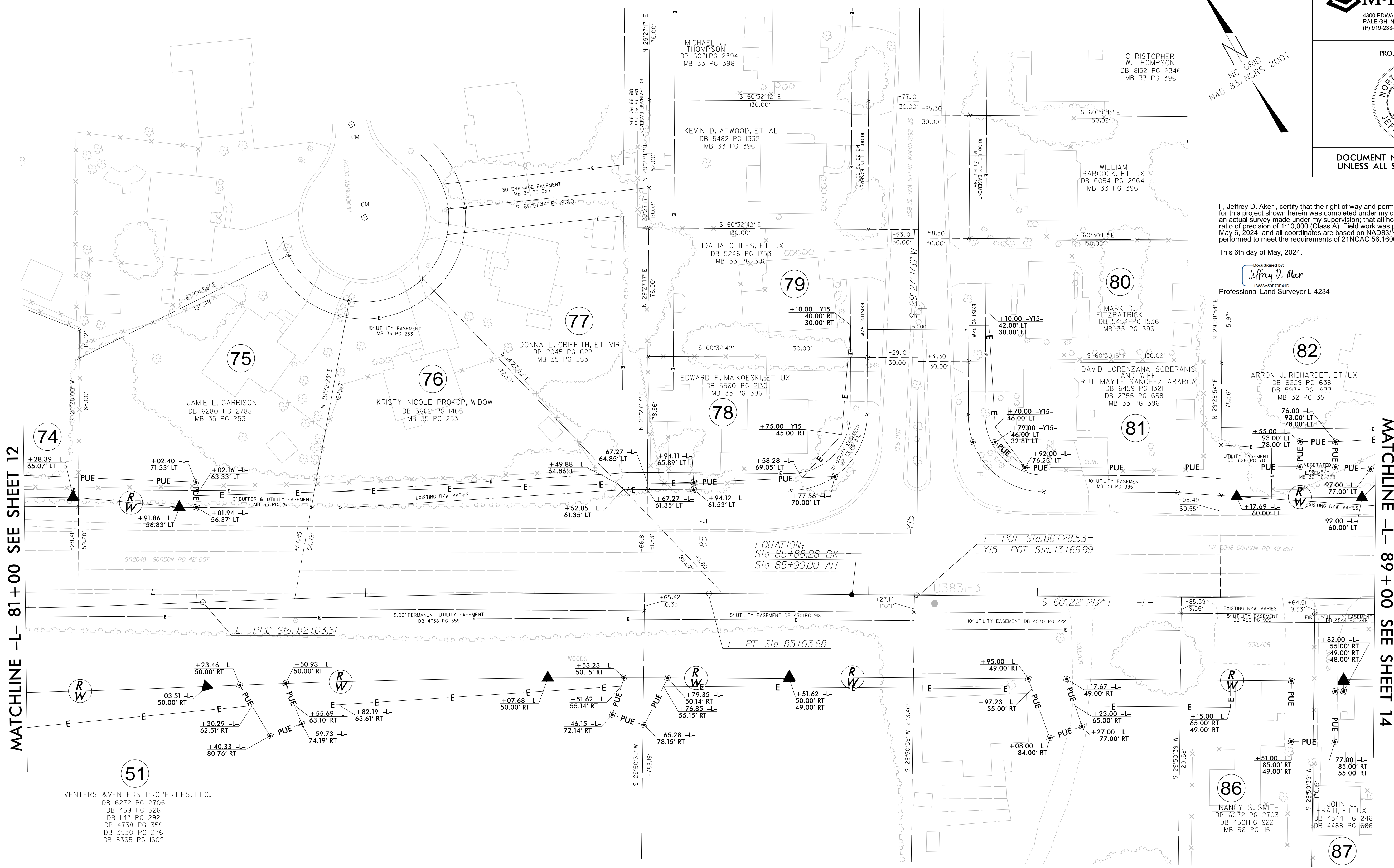
I, Jeffrey D. Aker, certify that the right of way and permanent easement monumentation for this project shown herein was completed under my direct and responsible charge from an actual survey made under my supervision; that all horizontal closures had a minimum ratio of precision of 1:10,000 (Class A). Field work was performed from March 25, 2024 to May 6, 2024, and all coordinates are based on NAD83/NSRS 2007. That this survey was performed to meet the requirements of 21NCAC 56.1600 as applicable.

This 6th day of May, 2024.

Designed by:

 13833AS0700010
 Professional Land Surveyor L-4234

REVISIONS
 RIGHT OF WAY REVISION - 2022-12-08: DRIVEWAYS ADDED TO PARCEL 81 OFF -L- AND -Y15-. DRIVEWAY ADDED TO PARCEL 78 OFF -L- TO AVOID IMPACTING SEPTIC ON PARCEL 87. AJM



MATCHLINE -L- 81+00 SEE SHEET 12

MATCHLINE -L- 89+00 SEE SHEET 14

51
 VENTERS & VENTERS PROPERTIES, LLC.
 DB 6272 PG 2706
 DB 459 PG 526
 DB 147 PG 292
 DB 4738 PG 359
 DB 3530 PG 276
 DB 5365 PG 1609

EQUATION:
 Sta 85+88.28 BK =
 Sta 85+90.00 AH

NOTES:

1. IF FURTHER INFORMATION REGARDING PROJECT CONTROL IS NEEDED PLEASE CONTACT THE LOCATION AND SURVEYS UNIT.
2. PROJECT CONTROL WAS ESTABLISHED USING GNSS, THE GLOBAL NAVIGATION SATELLITE SYSTEM.
3. RIGHT OF WAY MONUMENTATION ESTABLISHED March 25, 2024 TO May 6, 2024 .

PC: MAY-2024 15:45
 P:\04482\1231\Utilities\Drawings\U6202.LS.RW13.dgn
 AT: NC06988