

Location and Surveys



DOCUMENT NOT CONSIDERED FINAL UNLESS ALL SIGNATURES COMPLETED

I, Jeffrey D. Aker, certify that the right of way and permanent easement monumentation for this project shown herein was completed under my direct and responsible charge from an actual survey made under my supervision; that all horizontal closures had a minimum ratio of precision of 1:10,000 (Class A). Field work was performed from 11/30/23 to 12/11/23 and all coordinates are based on NAD83/2007. That this survey was performed to meet the requirements of 21NCAC 56.1600 as applicable.

This 12th day of December, 2023.

Designed by:
 Jeffrey D. Aker
 1388345970641D
 Professional Land Surveyor L-4234

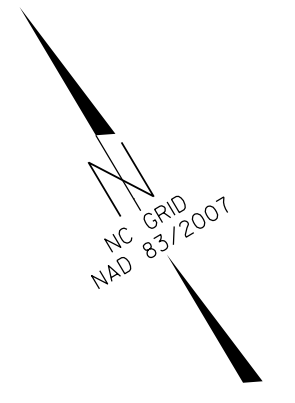
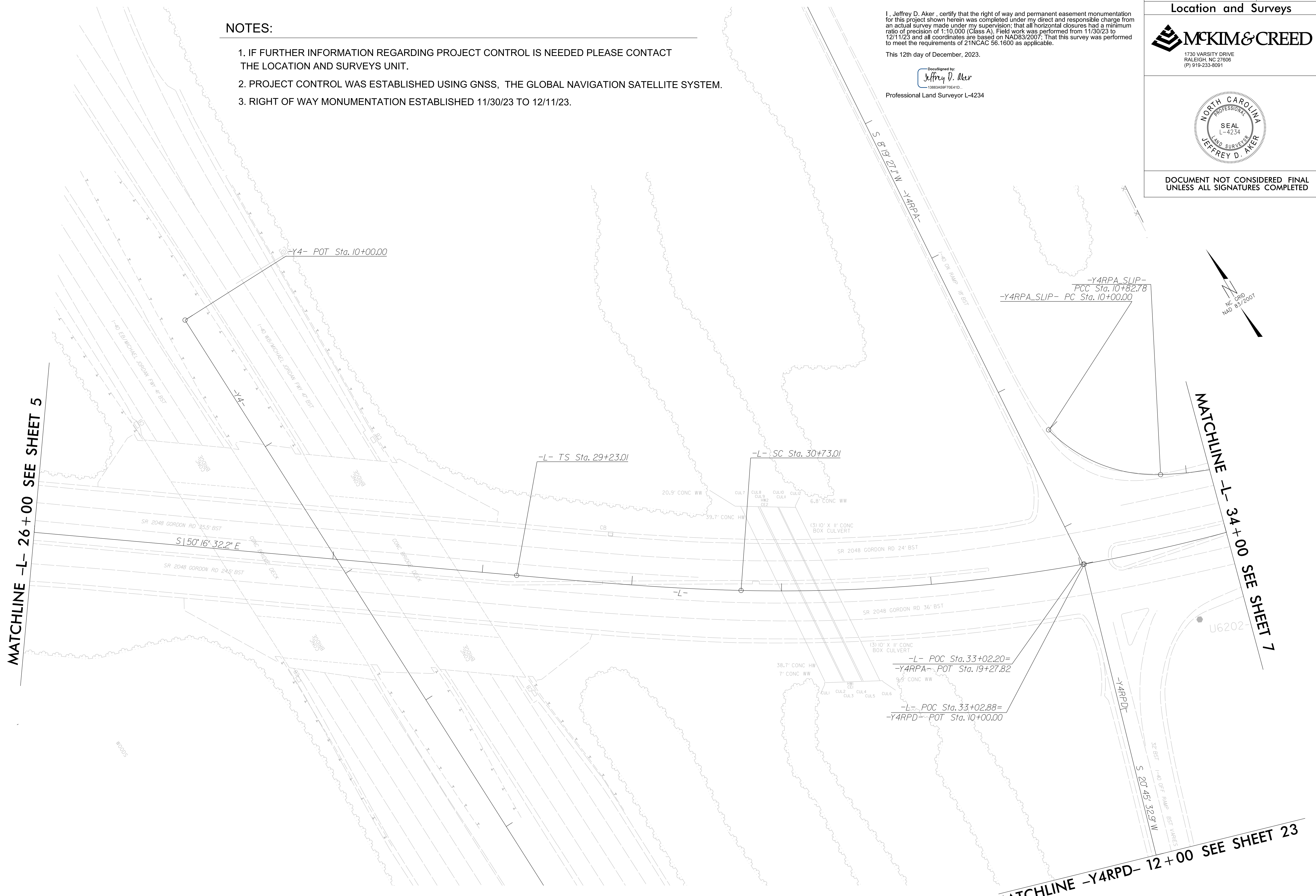
NOTES:

1. IF FURTHER INFORMATION REGARDING PROJECT CONTROL IS NEEDED PLEASE CONTACT THE LOCATION AND SURVEYS UNIT.
2. PROJECT CONTROL WAS ESTABLISHED USING GNSS, THE GLOBAL NAVIGATION SATELLITE SYSTEM.
3. RIGHT OF WAY MONUMENTATION ESTABLISHED 11/30/23 TO 12/11/23.

MATCHLINE -L- 26 + 00 SEE SHEET 5

MATCHLINE -L- 34 + 00 SEE SHEET 7

MATCHLINE -Y4RPD- 12 + 00 SEE SHEET 23



REVISIONS

12 DEC 2023 14:32
 L:\0482\1157\comatics\80-Drawings\U6202\1.s.r\1406.dgn
 kreuswender AT MC0685Z