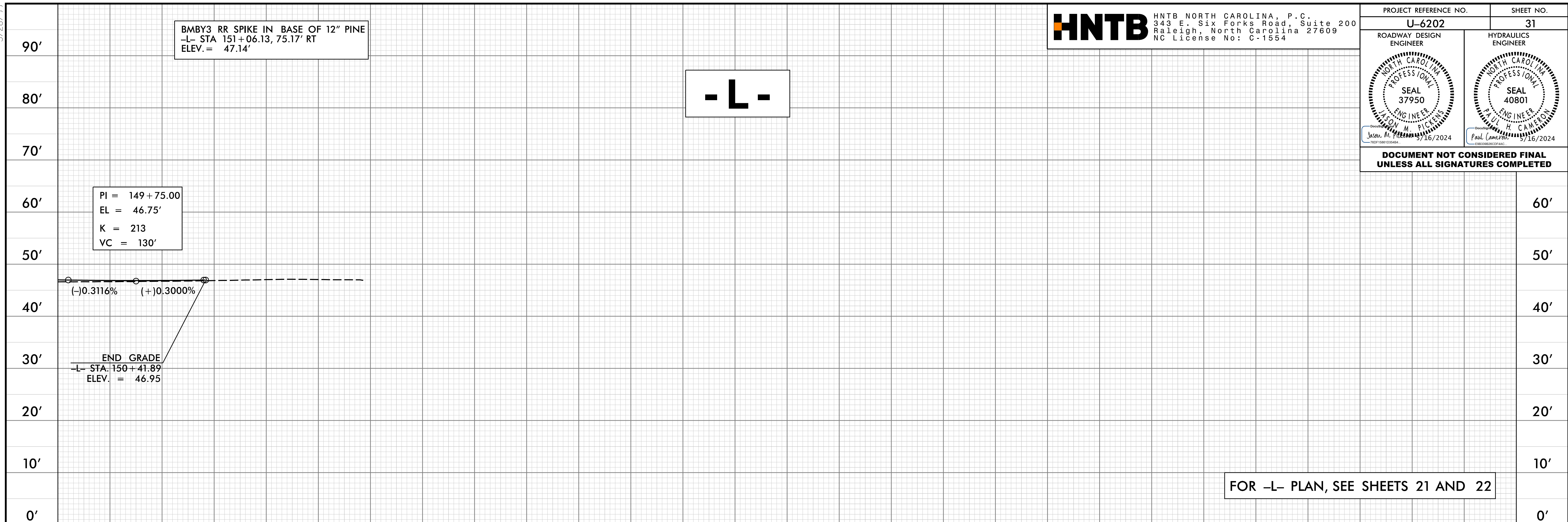


5/28/24

PROJECT REFERENCE NO. U-6202	SHEET NO. 31
ROADWAY DESIGN ENGINEER 	HYDRAULICS ENGINEER

DOCUMENT NOT CONSIDERED FINAL UNLESS ALL SIGNATURES COMPLETED



BMBY3 RR SPIKE IN BASE OF 12" PINE
-L- STA 151+06.13, 75.17' RT
ELEV. = 47.14'

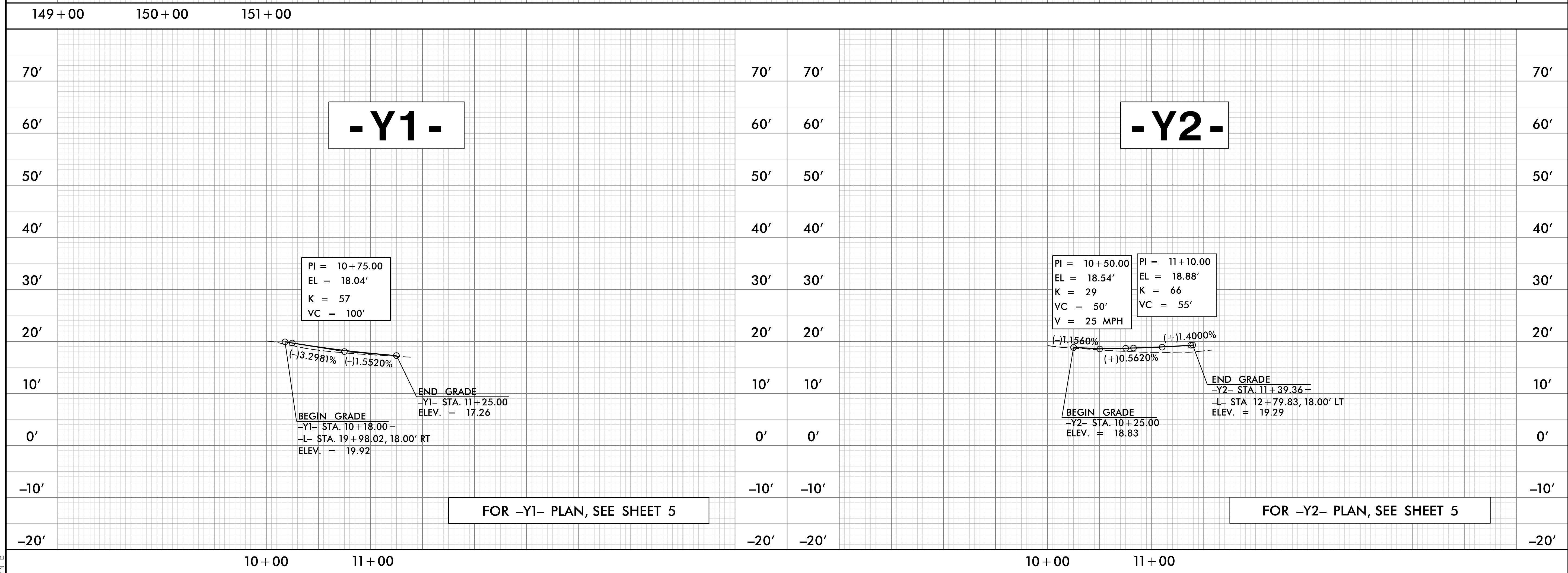
-L-

PI = 149+75.00
EL = 46.75'
K = 213
VC = 130'

(-)0.3116% (+)0.3000%

END GRADE
-L- STA. 150+41.89
ELEV. = 46.95

FOR -L- PLAN, SEE SHEETS 21 AND 22



-Y1-

-Y2-

PI = 10+75.00
EL = 18.04'
K = 57
VC = 100'

(-)3.2981% (-)1.5520%

BEGIN GRADE
-Y1- STA. 10+18.00 =
-L- STA. 19+98.02, 18.00' RT
ELEV. = 19.92

END GRADE
-Y1- STA. 11+25.00
ELEV. = 17.26

PI = 10+50.00
EL = 18.54'
K = 29
VC = 50'
V = 25 MPH

PI = 11+10.00
EL = 18.88'
K = 66
VC = 55'

(-)1.1560% (+)1.4000%

BEGIN GRADE
-Y2- STA. 10+25.00
ELEV. = 18.83

END GRADE
-Y2- STA. 11+39.36 =
-L- STA. 12+79.83, 18.00' LT
ELEV. = 19.29

FOR -Y1- PLAN, SEE SHEET 5

FOR -Y2- PLAN, SEE SHEET 5

08-MAY-2024 11:35
C:\projects\U6202\RDY_PFL\31.dgn
HNTB