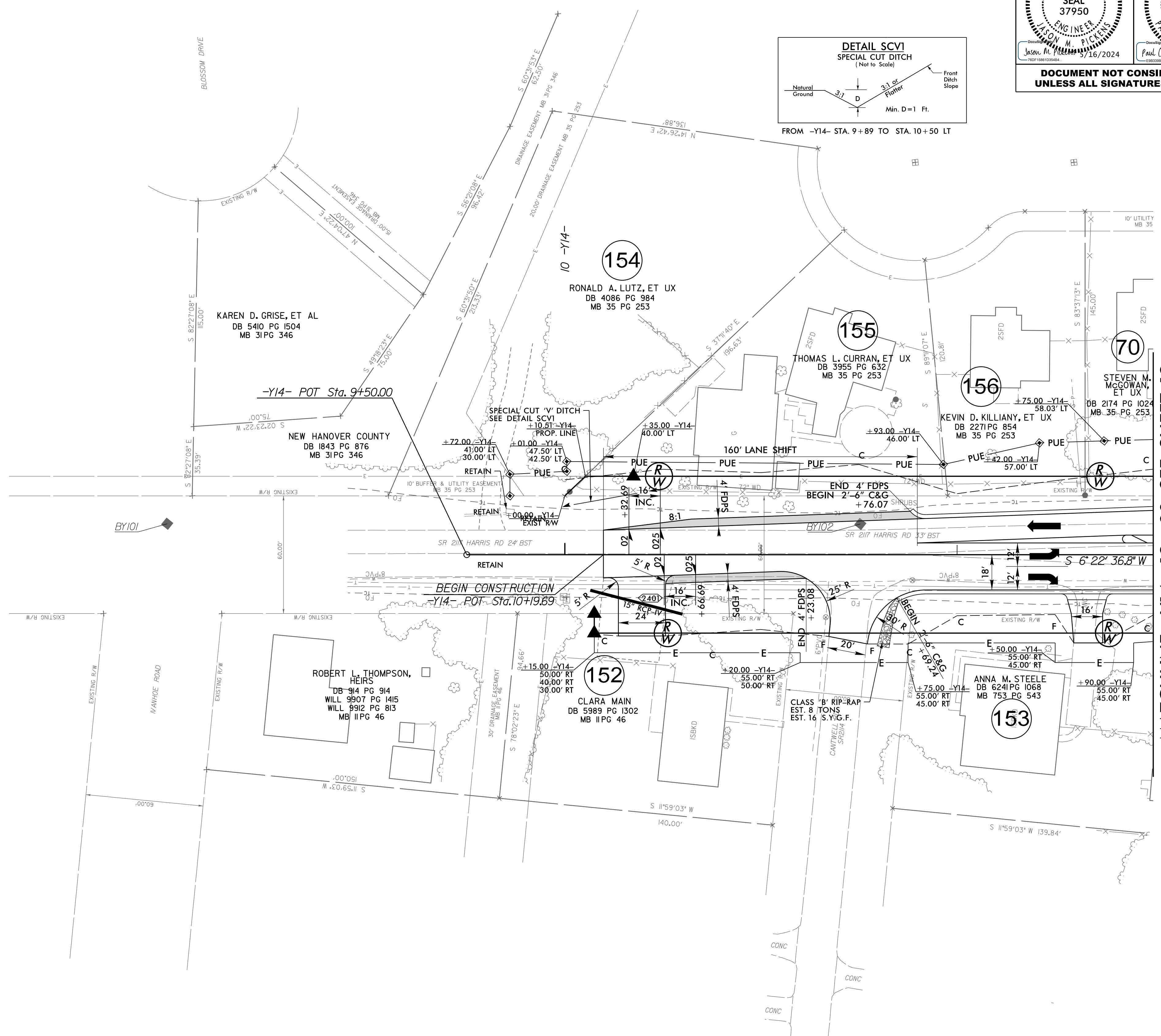
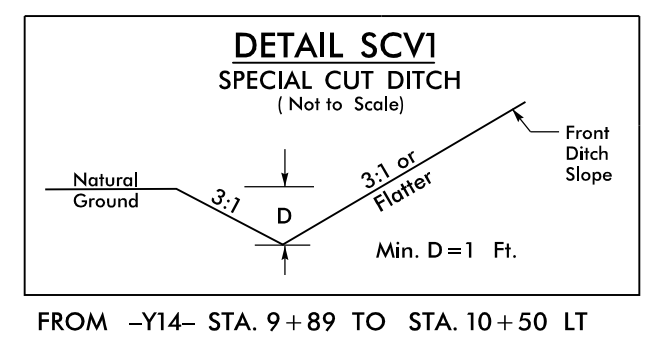


| | | | |
|--|--|------------------------|--|
| PROJECT REFERENCE NO. U-6202 | | SHEET NO. 24 | |
| ROADWAY DESIGN ENGINEER | | HYDRAULICS ENGINEER | |
| | | | |
| DOCUMENT NOT CONSIDERED FINAL UNLESS ALL SIGNATURES COMPLETED | | | |

NAD 83/NSRS 2007



MATCHLINE -Y14- 13+00 SEE SHEET 12

NOTE:
1. ALL DRIVEWAYS HAVE 10' RADII UNLESS OTHERWISE NOTED.

FOR -Y14- PROFILE, SEE SHEET 35