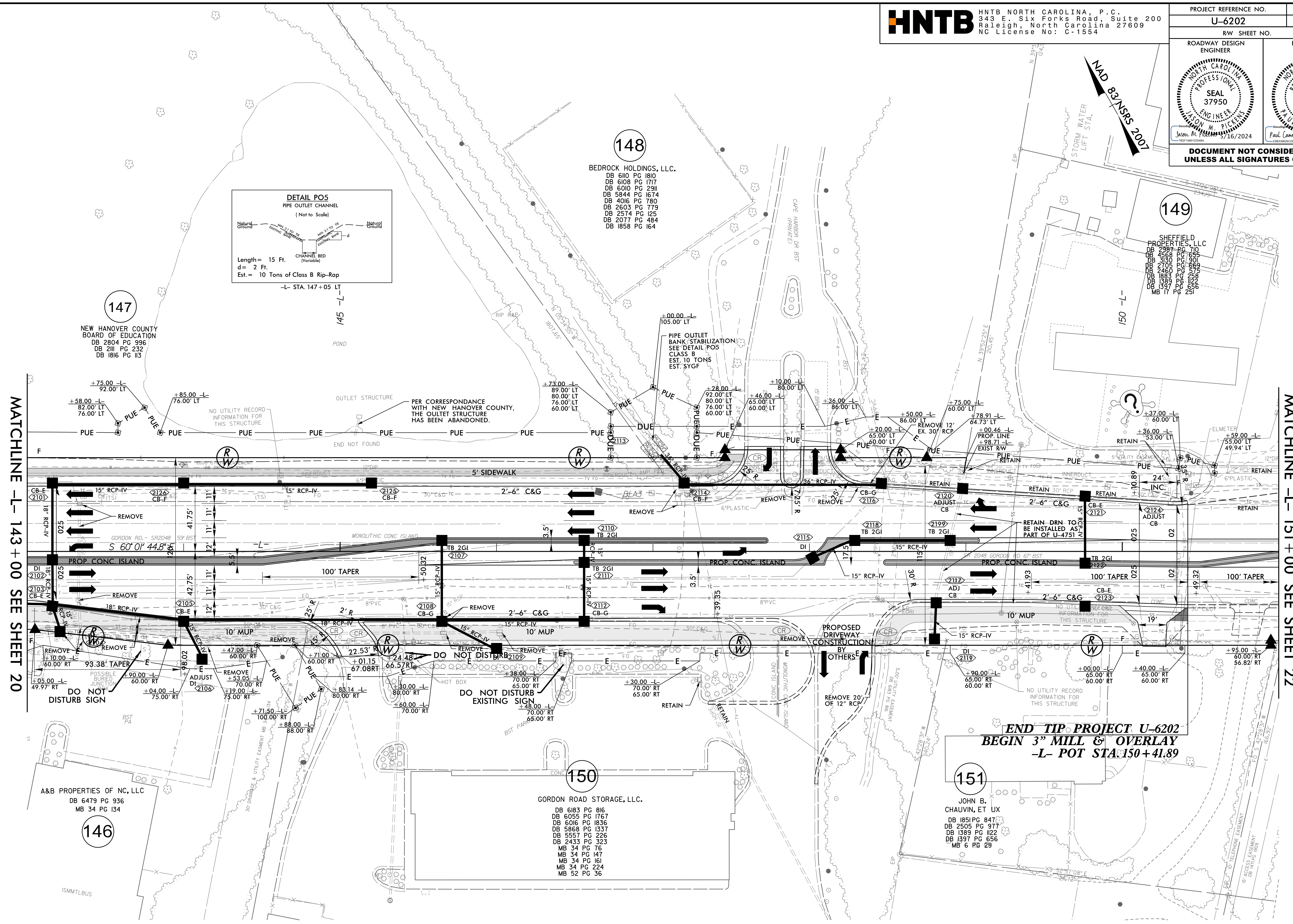


PROJECT REFERENCE NO. U-6202	SHEET NO. 21
RW SHEET NO.	
ROADWAY DESIGN ENGINEER	HYDRAULICS ENGINEER
DOCUMENT NOT CONSIDERED FINAL UNLESS ALL SIGNATURES COMPLETED	



MATCHLINE -L- 143 + 00 SEE SHEET 20

MATCHLINE -L- 151 + 00 SEE SHEET 22

END TIP PROJECT U-6202
BEGIN 3" MILL & OVERLAY
-L- POT STA. 150 + 41.89

NOTE:
 1. ALL DRIVEWAYS HAVE 10' RADII UNLESS OTHERWISE NOTED.

FOR -L- PROFILE, SEE SHEETS 30 AND 31
 FOR INTERSECTION DETAIL, SEE SHEET 2B-4