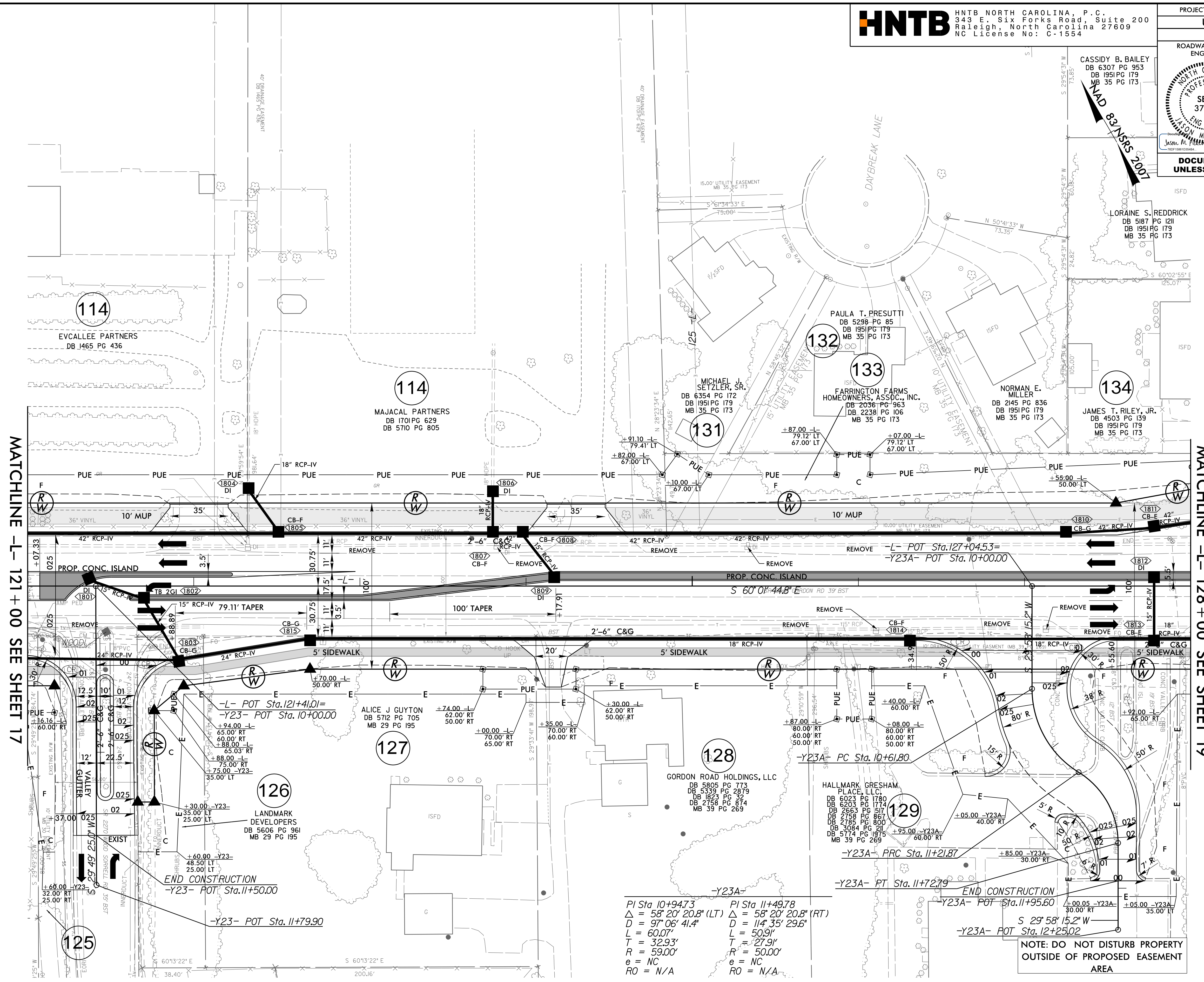


PROJECT REFERENCE NO. <b>U-6202</b>	SHEET NO. <b>18</b>
RW SHEET NO.	
ROADWAY DESIGN ENGINEER CASSIDY B. BAILEY DB 6307 PG 953 DB 1951 PG 179 MB 35 PG 173	HYDRAULICS ENGINEER LORRAINE S. REDDRICK DB 5187 PG 121 DB 1951 PG 179 MB 35 PG 173
<p><b>DOCUMENT NOT CONSIDERED FINAL UNLESS ALL SIGNATURES COMPLETED</b></p>	



MATCHLINE -L- 121 + 00 SEE SHEET 17

MATCHLINE -L- 128 + 00 SEE SHEET 19

**NOTE:**  
 1. ALL DRIVEWAYS HAVE 10' RADII UNLESS OTHERWISE NOTED.

PI Sta 10+947.3      PI Sta 11+49.78  
 $\Delta = 58^\circ 20' 20.8''$  (LT)       $\Delta = 58^\circ 20' 20.8''$  (RT)  
 $D = 97' 06' 41.4''$        $D = 114' 35' 29.6''$   
 $L = 60.07'$        $L = 50.91'$   
 $T = 32.93'$        $T = 27.91'$   
 $R = 59.00'$        $R = 50.00'$   
 $e = NC$        $e = NC$   
 $RO = N/A$        $RO = N/A$

NOTE: DO NOT DISTURB PROPERTY  
 OUTSIDE OF PROPOSED EASEMENT  
 AREA

FOR -L- PROFILE, SEE SHEET 30  
 FOR -Y23- PROFILE, SEE SHEET 37  
 FOR -Y23A- PROFILE, SEE SHEET 38  
 FOR INTERSECTION DETAILS, SEE SHEET 2B-3

13 MAY 2024 09:06  
 P:\Projects\2024\U-6202\RDY\_PSH18.dgn  
 HNTB