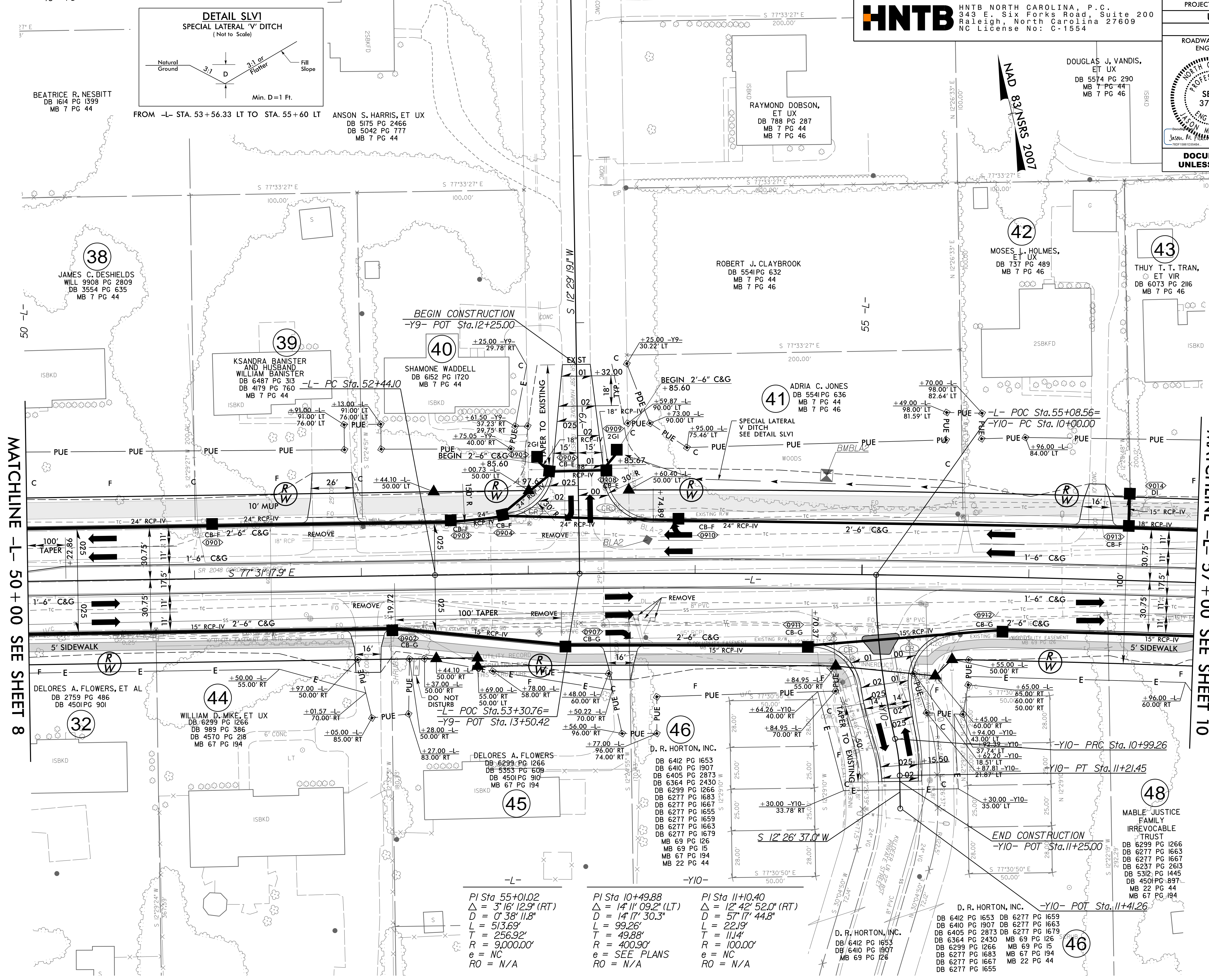


8/17/99

PROJECT REFERENCE NO. <b>U-6202</b>	SHEET NO. <b>9</b>
RW SHEET NO.	
ROADWAY DESIGN ENGINEER	HYDRAULICS ENGINEER
DOCUMENT NOT CONSIDERED FINAL UNLESS ALL SIGNATURES COMPLETED	



MATCHLINE -L- 50 + 00 SEE SHEET 8

MATCHLINE -L- 57 + 00 SEE SHEET 10

$PI\ Sta\ 55+01.02$ $\Delta = 3' 16'' 12.9'' (RT)$ $D = 0' 38'' 11.8''$ $L = 513.69'$ $T = 256.92'$ $R = 9,000.00'$ $e = NC$ $RO = N/A$	$PI\ Sta\ 10+49.88$ $\Delta = 14' 11'' 09.2'' (LT)$ $D = 57' 17'' 30.3''$ $L = 99.26'$ $T = 49.88'$ $R = 100.90'$ $e = SEE\ PLANS$ $RO = N/A$	$PI\ Sta\ 11+10.40$ $\Delta = 12' 42'' 52.0'' (RT)$ $D = 57' 17'' 44.8''$ $L = 22.19'$ $T = 11.14'$ $R = 100.00'$ $e = NC$ $RO = N/A$
--	--	--

NOTE:  
 1. ALL DRIVEWAYS HAVE 10' RADII UNLESS OTHERWISE NOTED.

FOR -L- PROFILE, SEE SHEET 27  
 FOR -Y9- PROFILE, SEE SHEET 34  
 FOR -Y10- PROFILE, SEE SHEET 34  
 FOR INTERSECTION DETAIL, SEE SHEET 28-2

13 MAY 2024 09:05  
 P:\dwg\2024\U-6202-RD\PSH9.dgn  
 HNTB