

8.17.24

ROADWAY DESIGN ENGINEER
HYDRAULICS ENGINEER

SEAL 37950
SEAL 40801

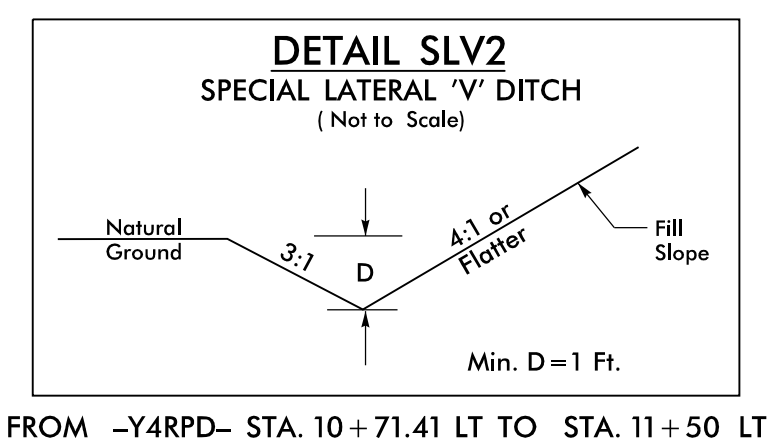
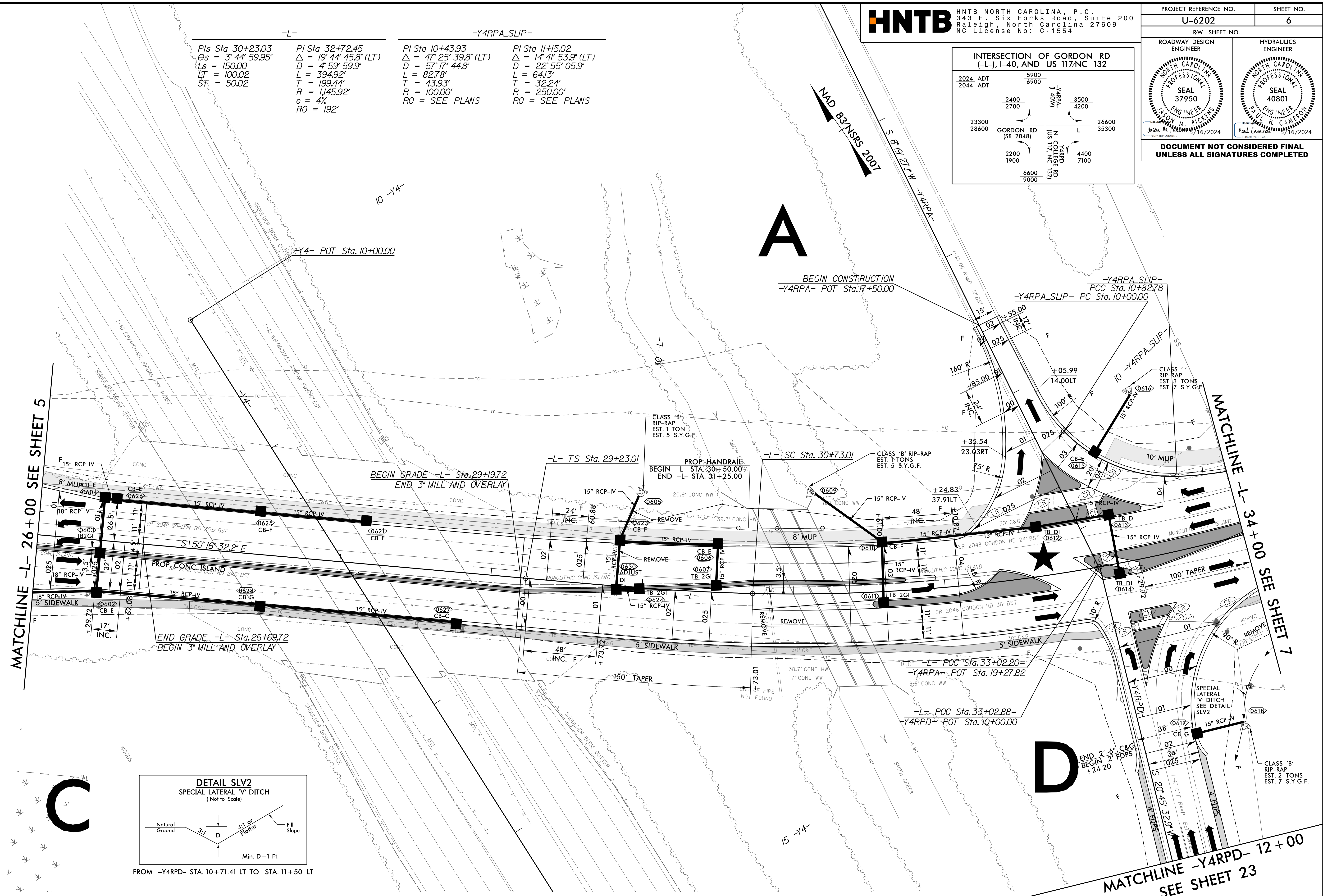
5/16/2024
5/16/2024

DOCUMENT NOT CONSIDERED FINAL
UNLESS ALL SIGNATURES COMPLETED

INTERSECTION OF GORDON RD (-L-), I-40, AND US 117/NC 132

2024 ADT	5900		
2044 ADT	6900		
	2400	3500	
	2700	4200	
23300			26600
28600			35300
2200			4400
1900			7100
	6600		
	9000		

-L-		-Y4RPA_SLIP-	
PI Sta 30+23.03	PI Sta 32+72.45	PI Sta 10+43.93	PI Sta 11+15.02
$\Delta = 3^\circ 44' 59.95"$	$\Delta = 19^\circ 44' 45.8" (LT)$	$\Delta = 47^\circ 25' 39.8" (LT)$	$\Delta = 14^\circ 41' 53.9" (LT)$
$L_s = 150.00$	$D = 4^\circ 59' 59.9"$	$D = 57^\circ 17' 44.8"$	$D = 22^\circ 55' 05.9"$
$LT = 100.02$	$L = 394.92'$	$L = 82.78'$	$L = 64.13'$
$ST = 50.02$	$T = 199.44'$	$T = 43.93'$	$T = 32.24'$
	$R = 1,45.92'$	$R = 100.00'$	$R = 250.00'$
	$e = 4\%$	$RO = SEE PLANS$	$RO = SEE PLANS$
	$RO = 192'$		



NOTE:
1. ALL DRIVEWAYS HAVE 10' RADII UNLESS OTHERWISE NOTED.

★ PROPOSED SIGNAL

FOR -L- PROFILE, SEE SHEET 26
FOR -Y4RPA- PROFILE, SEE SHEET 32
FOR -Y4RPA SLIP- PROFILE, SEE SHEET 38
FOR -Y4RPD- PROFILE, SEE SHEET 33
FOR INTERSECTION DETAIL SEE SHEET 2B-1

13-MAY-2024 09:05
C:\p\dw\24\proj\U6202\RDY_PSH6.dgn
HNTB