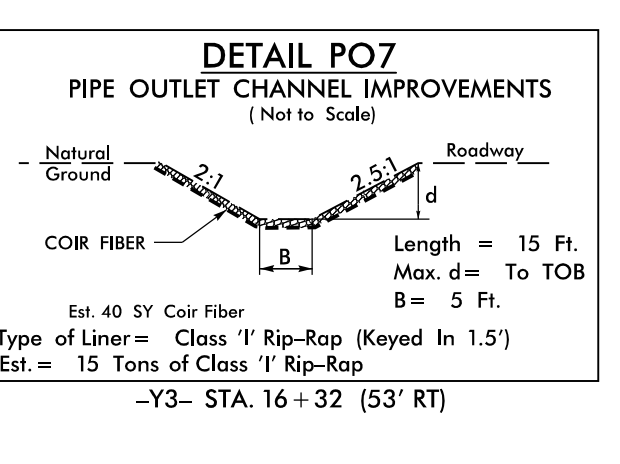
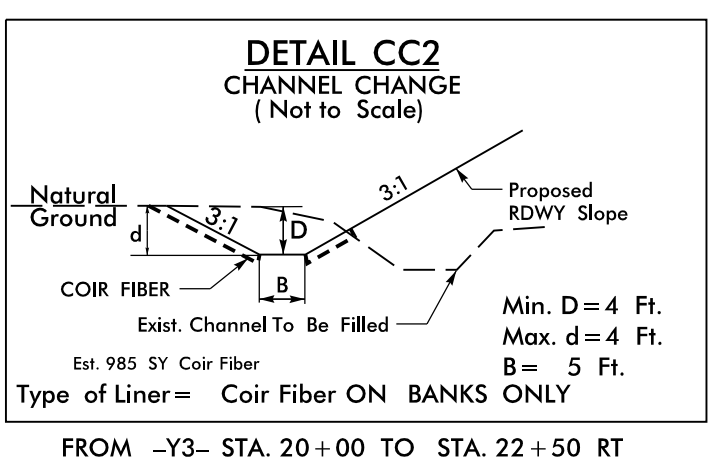
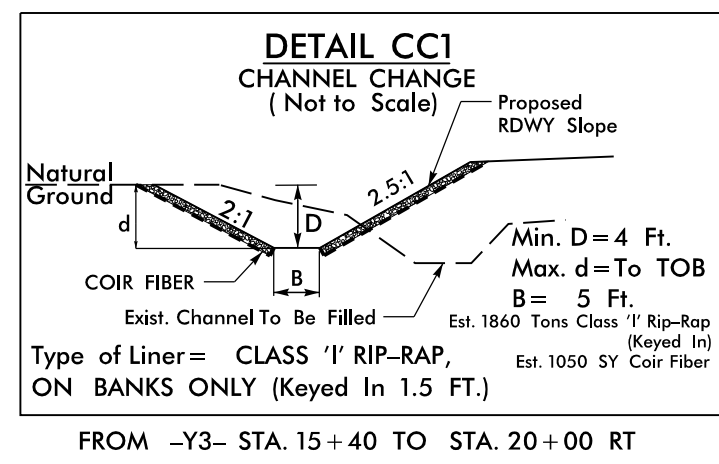
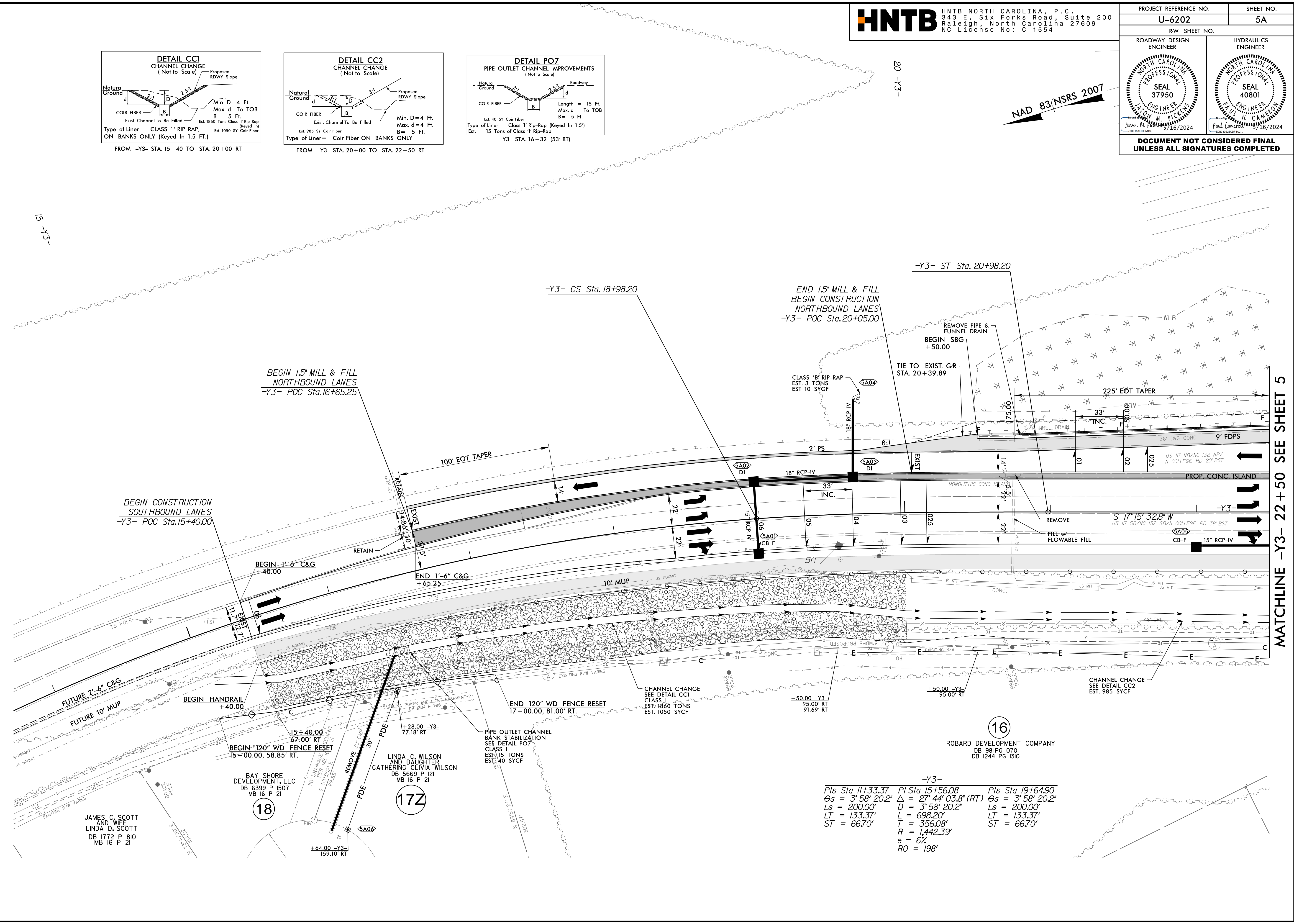


8.17.17.99

PROJECT REFERENCE NO. U-6202	SHEET NO. 5A
RW SHEET NO.	
ROADWAY DESIGN ENGINEER	HYDRAULICS ENGINEER
DOCUMENT NOT CONSIDERED FINAL UNLESS ALL SIGNATURES COMPLETED	



NAD 83/NSRS 2007



MATCHLINE -Y3- 22 + 50 SEE SHEET 5

13 MAY 2024 09:05
 (P:\proj\2024\U-6202\RDY_PSH5A.dgn
 HNTB

JAMES C. SCOTT
 AND WIFE
 LINDA D. SCOTT
 DB 1772 P 910
 MB 16 P 21

BAY SHORE
 DEVELOPMENT, LLC
 DB 6399 P 1507
 MB 16 P 21

LINDA C. WILSON
 AND DAUGHTER
 CATHERINE OLIVIA WILSON
 DB 5669 P 121
 MB 16 P 21

ROBOARD DEVELOPMENT COMPANY
 DB 981 PG 070
 DB 1244 PG 1310

-Y3-
 Pls Sta 11+33.37 Pl Sta 15+56.08 Pls Sta 19+64.90
 Os = 3' 58" 20.2" Δ = 27' 44" 03.8" (RT) Os = 3' 58" 20.2"
 Ls = 200.00' D = 3' 58" 20.2" Ls = 200.00'
 LT = 133.37' L = 698.20' LT = 133.37'
 ST = 66.70' R = 356.08' T = 1442.39'
 R = 1,442.39'
 e = 6%
 RO = 198'