

8.17.2024

ROADWAY DESIGN ENGINEER HYDRAULICS ENGINEER

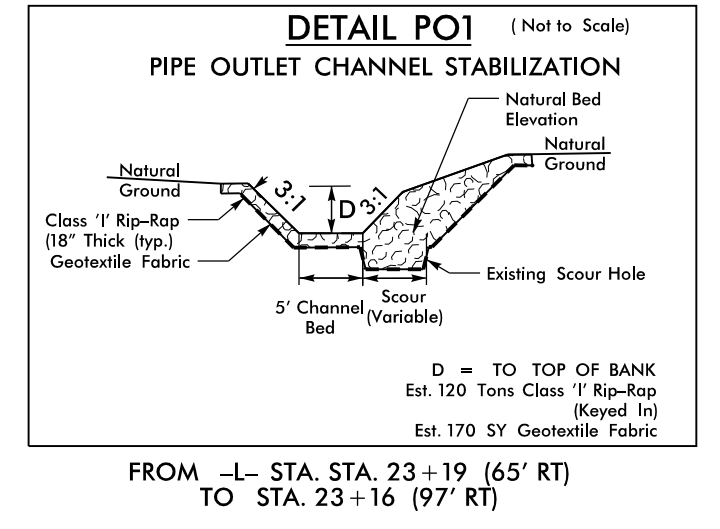
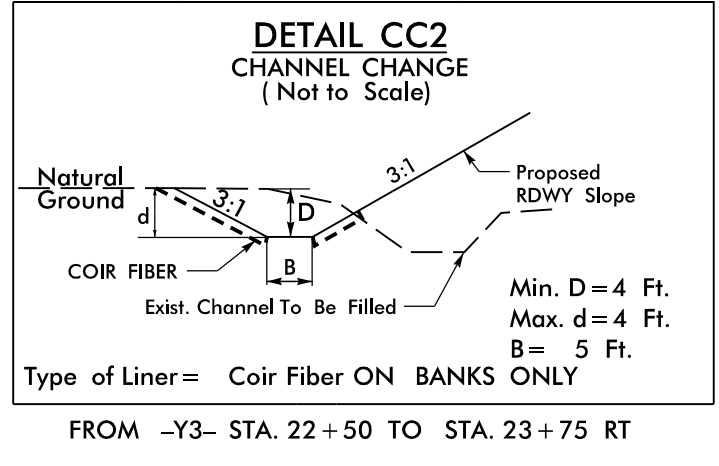
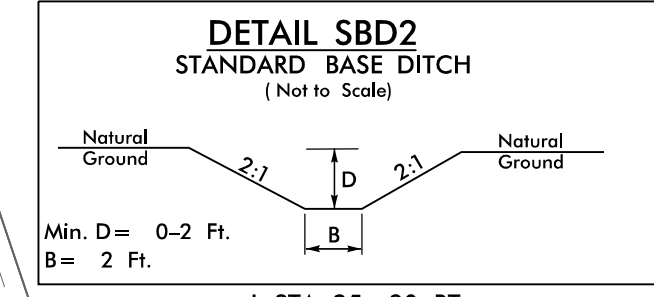
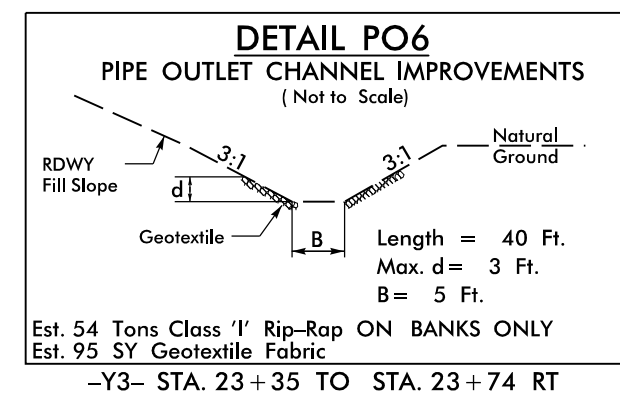
SEAL 37950 SEAL 40801

5/16/2024 5/16/2024

DOCUMENT NOT CONSIDERED FINAL UNLESS ALL SIGNATURES COMPLETED

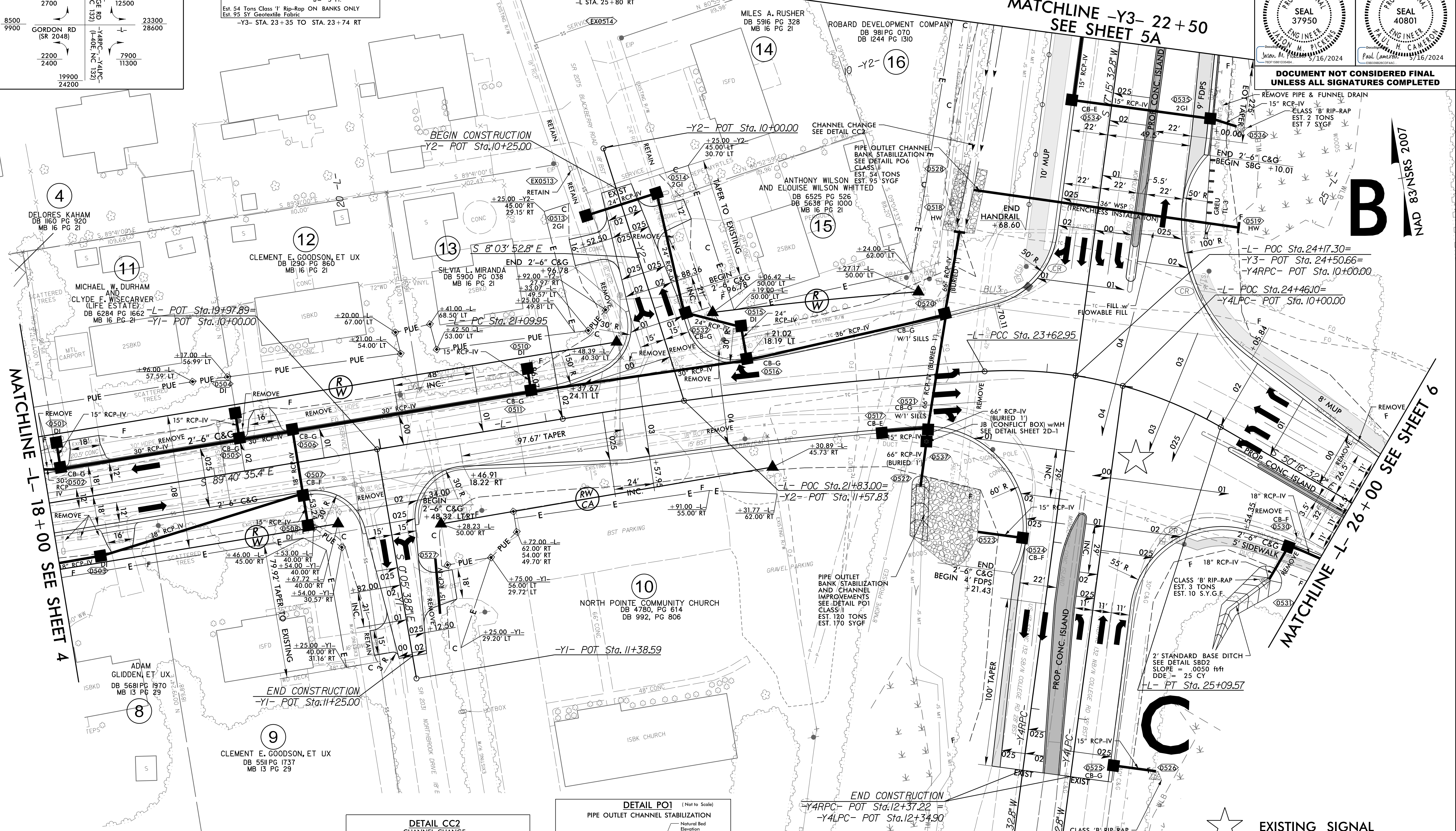
INTERSECTION OF GORDON RD (-L-), I-40, AND US 117/NC 132

2024 ADT	22400	10900	23300
2044 ADT	25700	12500	28600
1700			
2700			
8500			
9900			
GORDON RD (SR 2048)		US 117/NC 132	
2200	7900	19900	24200
2400	11300		



PI Sta 22+36.56	PI Sta 24+38.44
Δ = 5' 47" 54.2" (RT)	Δ = 33' 36" 09.0" (RT)
D = 2' 17" 30.6"	D = 22' 55" 05.9"
L = 253.00'	L = 146.62'
T = 126.61'	T = 75.49'
R = 2,500.00'	R = 250.00'
e = 4%	e = 4%
RO = 192'	RO = 136'

NOTE:
1. ALL DRIVEWAYS HAVE 10' RADII UNLESS OTHERWISE NOTED.



13 MAY 2024 09:05
C:\p\dwg\95\U-6202-RD-L_PSH5.dgn