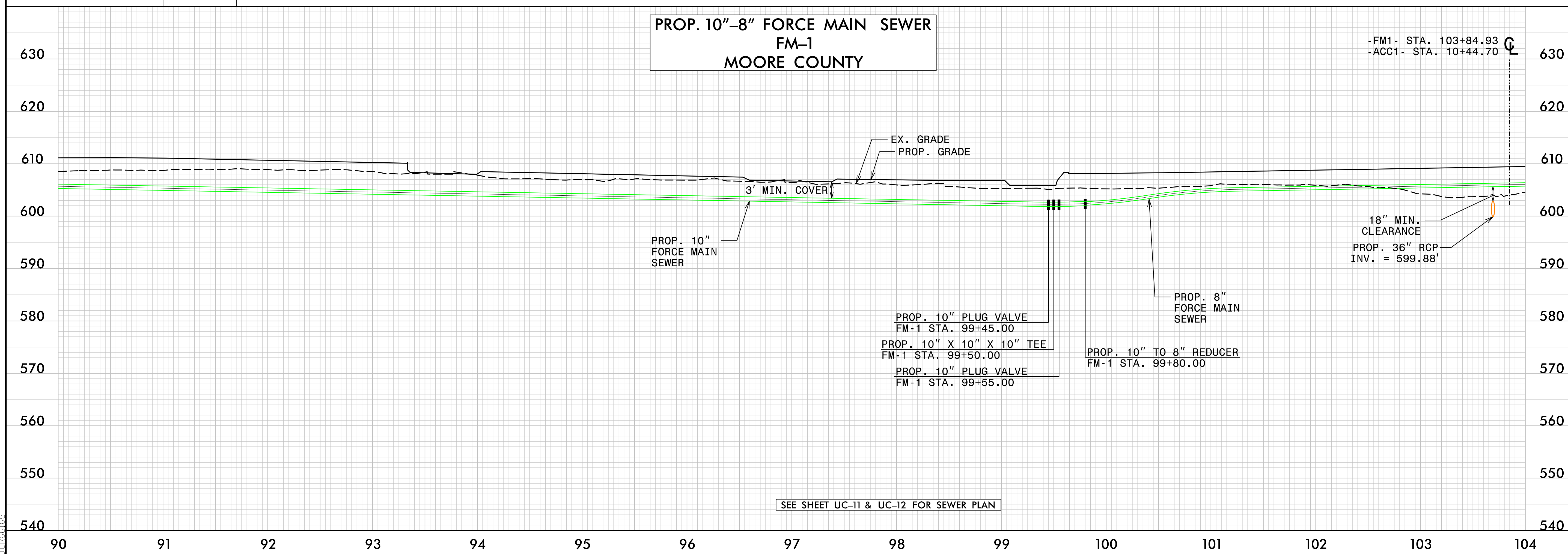
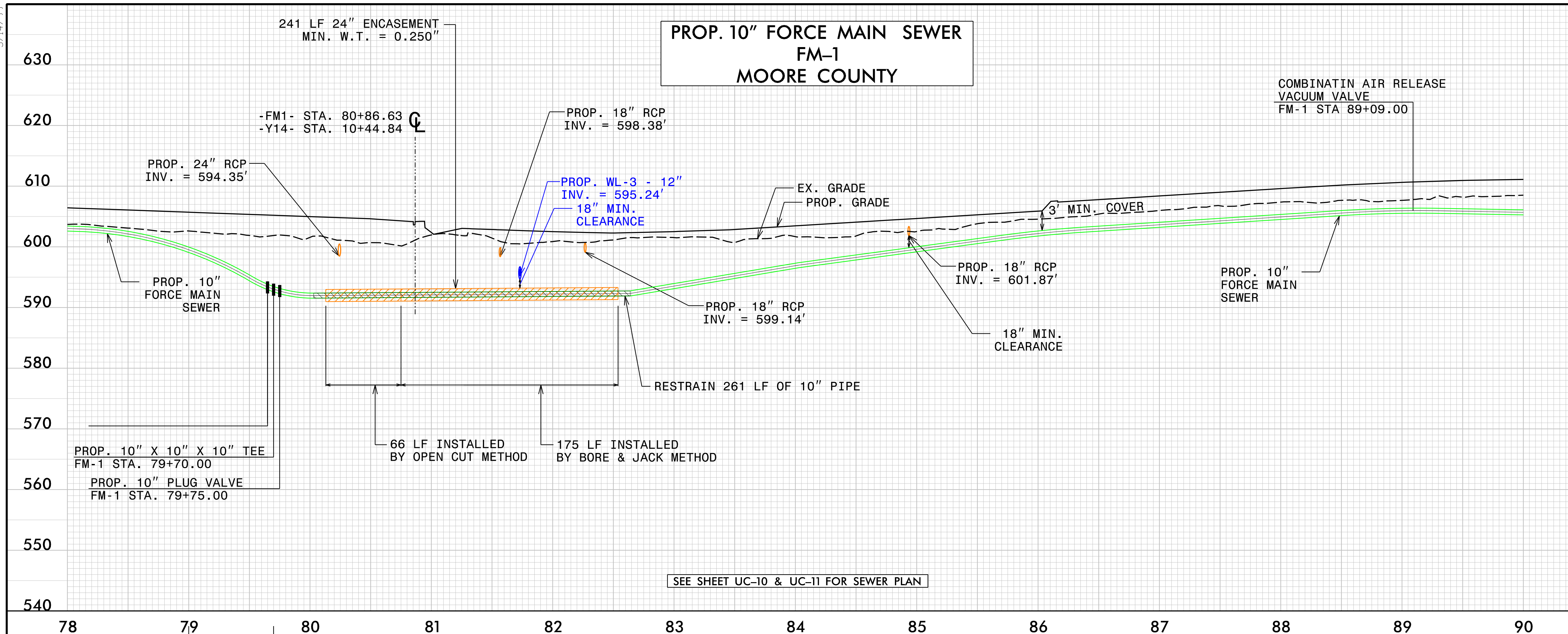


5/14/99

PROJECT REFERENCE NO. R-5726	SHEET NO. UC-31
DESIGNED BY: DSJ	
DRAWN BY: PJ	
REVISED:	
NORTH CAROLINA DEPARTMENT OF TRANSPORTATION UTILITIES ENGINEERING SEC. PHONE: (919) 707-6690 FAX: (919) 250-4151 UTILITY CONSTRUCTION PLANS ONLY	
DOCUMENT NOT CONSIDERED FINAL UNLESS ALL SIGNATURES COMPLETED	
Prepared in the Office of:	MOTT MACDONALD 938 Main Campus Drive, Suite 200 Raleigh, NC 27606 www.mottmac.com/americas
UTILITY CONSTRUCTION	

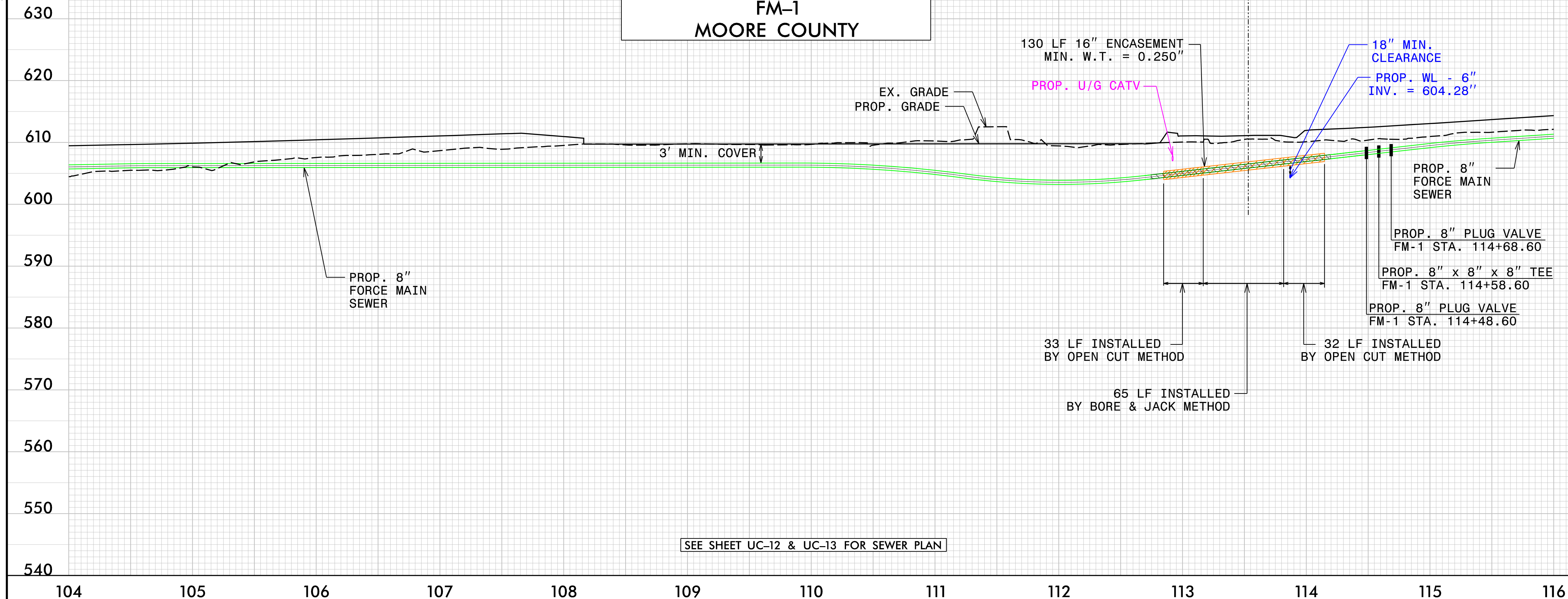


I:\048559_AW\Projects\11\Ases\Engineering\UC\Proj\2800_1000_R5726_ut_UC31.dgn

5/14/99

PROP. 8" FORCE MAIN SEWER FM-1 MOORE COUNTY

Q -FM1- STA. 113+53.16
-Y16- STA. 10+50.51



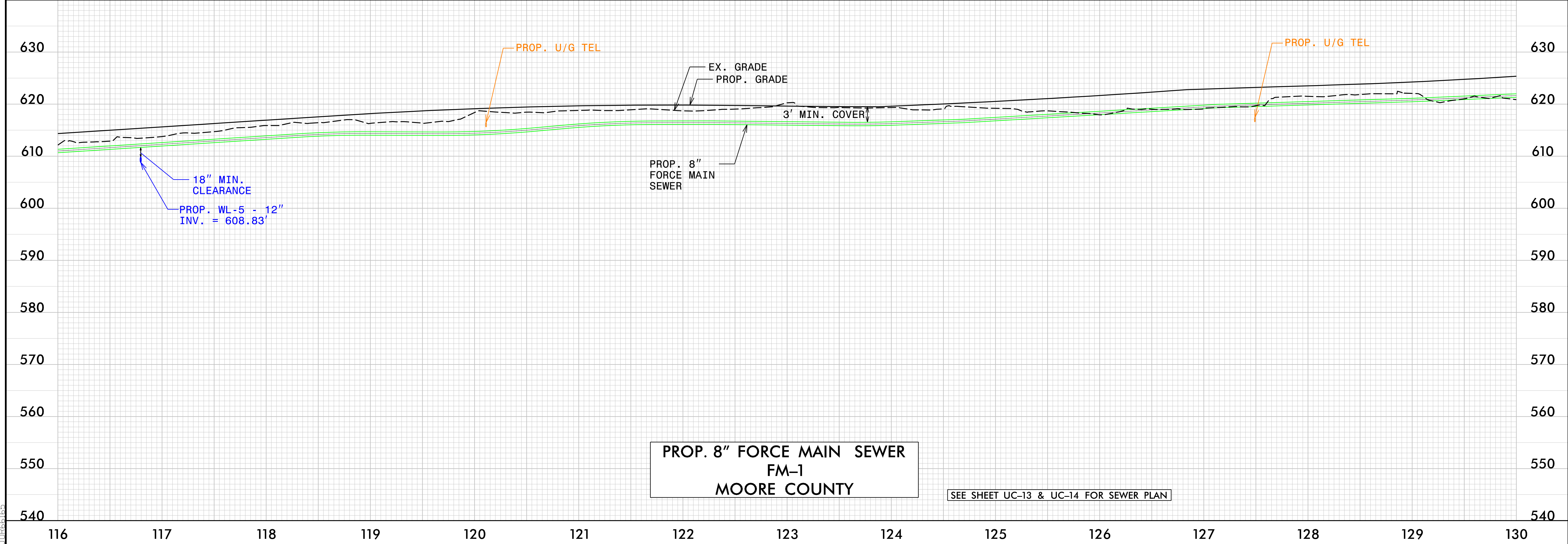
SEE SHEET UC-12 & UC-13 FOR SEWER PLAN

PROJECT REFERENCE NO. R-5726	SHEET NO. UC-32
DESIGNED BY: DSJ	
DRAWN BY: PJ	
REVISED:	
NORTH CAROLINA DEPARTMENT OF TRANSPORTATION UTILITIES ENGINEERING SEC. PHONE: (919) 707-6690 FAX: (919) 250-4151 UTILITY CONSTRUCTION PLANS ONLY	
DOCUMENT NOT CONSIDERED FINAL UNLESS ALL SIGNATURES COMPLETED	
Prepared in the Office of:	
UTILITY CONSTRUCTION	

10:49:02 AM
C:\Users\jackson\OneDrive\Engineering\UC\Proj\2801.105.R5726.ut_UC32.dgn

PROP. 8" FORCE MAIN SEWER FM-1 MOORE COUNTY

SEE SHEET UC-13 & UC-14 FOR SEWER PLAN



5/14/99

COMBINATION AIR RELEASE
VACUUM VALVE
FM-1 STA 132+10.00

PROP. U/G TEL

EX. GRADE
PROP. GRADE

630
620
610
600
590
580
570
560
550
540

PROP. 8" PLUG VALVE
FM-1 STA. 133+22.00
PROP. 8" X 8" X 8" TEE
FM-1 STA. 133+27.00
PROP. 8" PLUG VALVE
FM-1 STA. 133+32.00

PROP. 18" RCP
INV. = 622.90'
18" MIN.
CLEARANCE

PROP. 8"
FORCE MAIN
SEWER

3' MIN. COVER

PROJECT REFERENCE NO.	SHEET NO.
R-5726	UC-33
DESIGNED BY: DSJ	NORTH CAROLINA PROFESSIONAL SEAL 014908 ENGINEER DONNA S. JACKSON
DRAWN BY: PJ	
REVISED:	NORTH CAROLINA DEPARTMENT OF TRANSPORTATION
UTILITIES ENGINEERING SEC. PHONE: (919) 707-6690 FAX: (919) 250-4151	UTILITY CONSTRUCTION PLANS ONLY
DOCUMENT NOT CONSIDERED FINAL UNLESS ALL SIGNATURES COMPLETED	
Prepared in the Office of:	M MOTT MACDONALD 938 Main Campus Drive, Suite 200 Raleigh, NC 27606 www.mottmac.com/americas
UTILITY CONSTRUCTION	

590
580
570
560
550
540

**PROP. 8" FORCE MAIN SEWER
FM-1
MOORE COUNTY**

SEE SHEET UC-14 & UC-15 FOR SEWER PLAN

130 131 132 133 134 135 136 137 138 139 140 141 142

COMBINATION AIR RELEASE VACUUM VALVE
FM-1 STA 154+00.00

630
620
610
600
590
580
570
560
550
540

PROP. 18" RCP
INV. = 610.53'
18" MIN.
CLEARANCE

18" MIN.
CLEARANCE
PROP. 30" RCP
INV. = 605.25'

PROP. 8" 45° HORIZ. BEND
ROTATED AS NEEDED
FM-1 STA. 147+26.94

PROP. 8" 45° HORIZ. BEND
ROTATED AS NEEDED
FM-1 STA. 147+78.05

PROP. 8" 11.25° HORIZ. BEND
ROTATED AS NEEDED
FM-1 STA. 149+03.69

PROP. 8" 11.25° HORIZ. BEND
ROTATED AS NEEDED
FM-1 STA. 148+31.40

3' MIN. COVER

PROP. 8"
FORCE MAIN
SEWER

PROP. U/G TEL

PROP. WL-4 - 8"
16" ENCASED
INV. = 612.63'

PROP. 18" RCP
INV. = 623.38'
18" MIN.
CLEARANCE

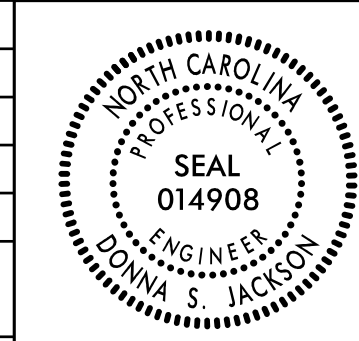

**PROP. 8" FORCE MAIN SEWER
FM-1
MOORE COUNTY**

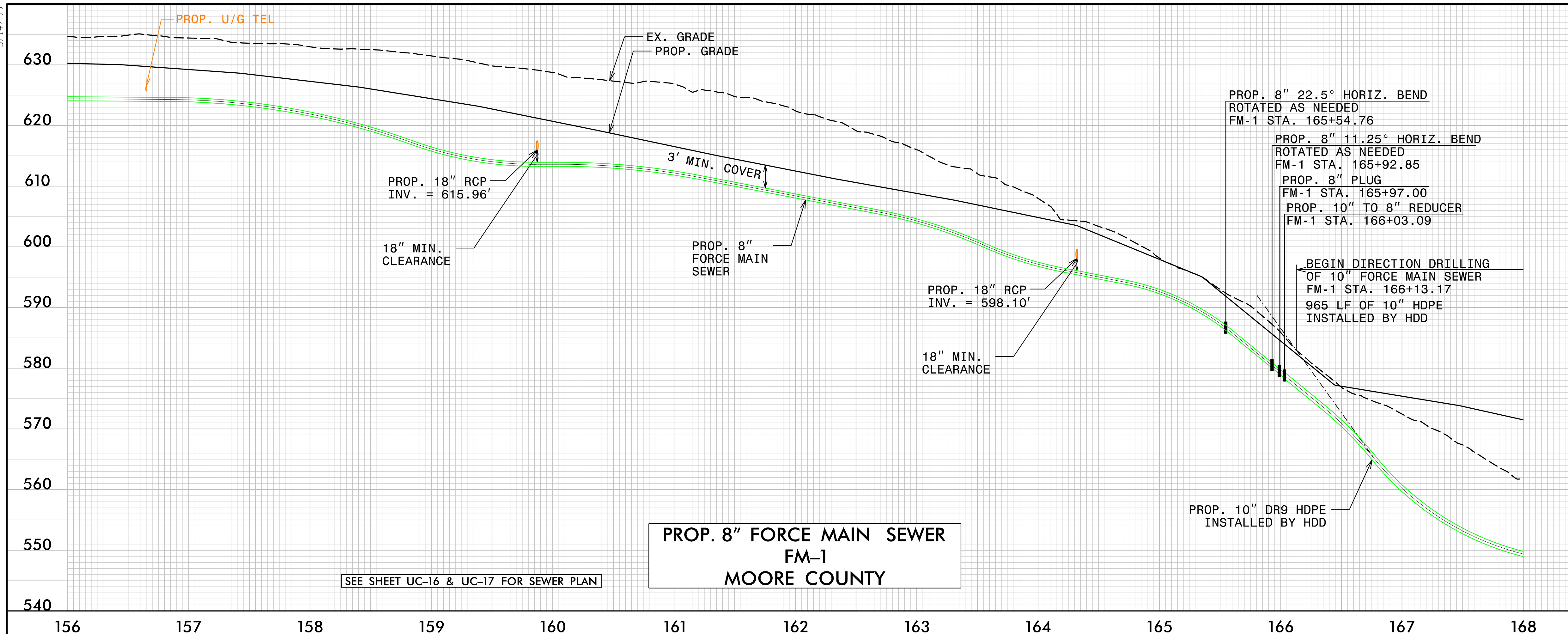
SEE SHEET UC-15 & UC-16 FOR SEWER PLAN

142 143 144 145 146 147 148 149 150 151 152 153 154 155 156

IC:\9106 AM
PC\111116
10R56165
Engineering\UC\Proj\280.110_R5726.ut_UC33.dgn

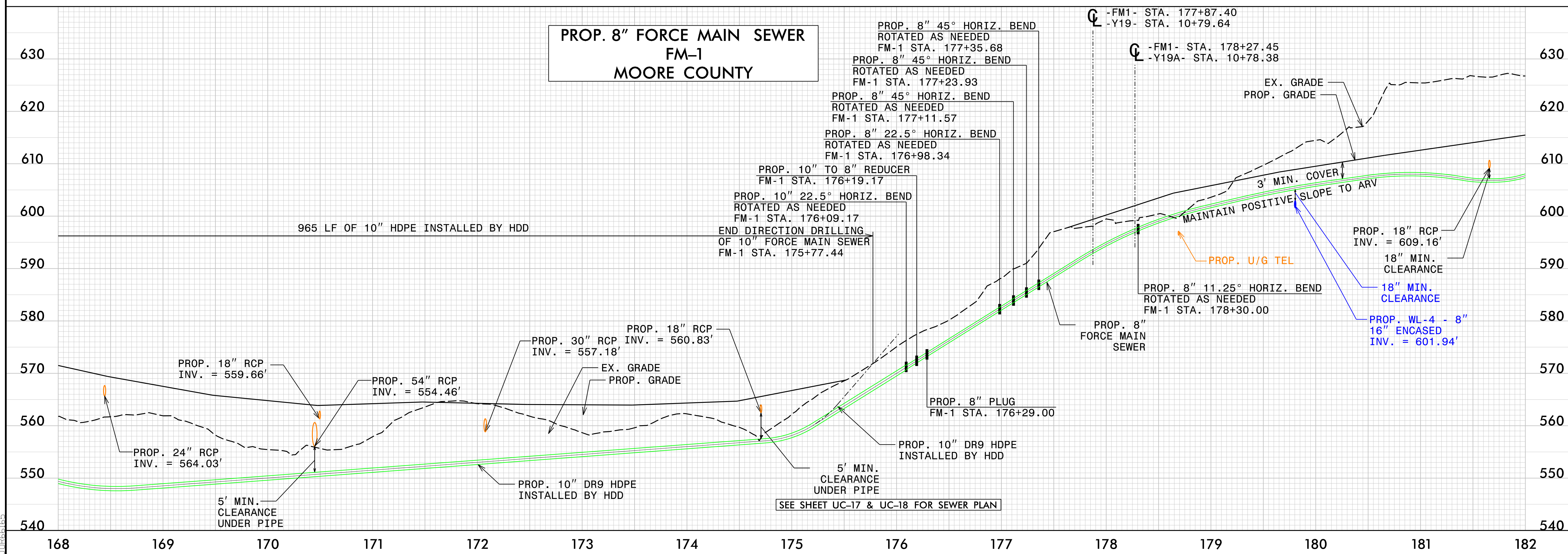
5/14/99

PROJECT REFERENCE NO. R-5726	SHEET NO. UC-34
DESIGNED BY: DSJ	
DRAWN BY: PJ	
REVISED:	
NORTH CAROLINA DEPARTMENT OF TRANSPORTATION	UTILITY CONSTRUCTION PLANS ONLY
UTILITIES ENGINEERING SEC. PHONE: (919) 707-6690 FAX: (919) 250-4151	
DOCUMENT NOT CONSIDERED FINAL UNLESS ALL SIGNATURES COMPLETED	
Prepared in the Office of:	 938 Main Campus Drive, Suite 200 Raleigh, NC 27606 www.mottmac.com/americas
UTILITY CONSTRUCTION	



**PROP. 8" FORCE MAIN SEWER
FM-1
MOORE COUNTY**

SEE SHEET UC-16 & UC-17 FOR SEWER PLAN

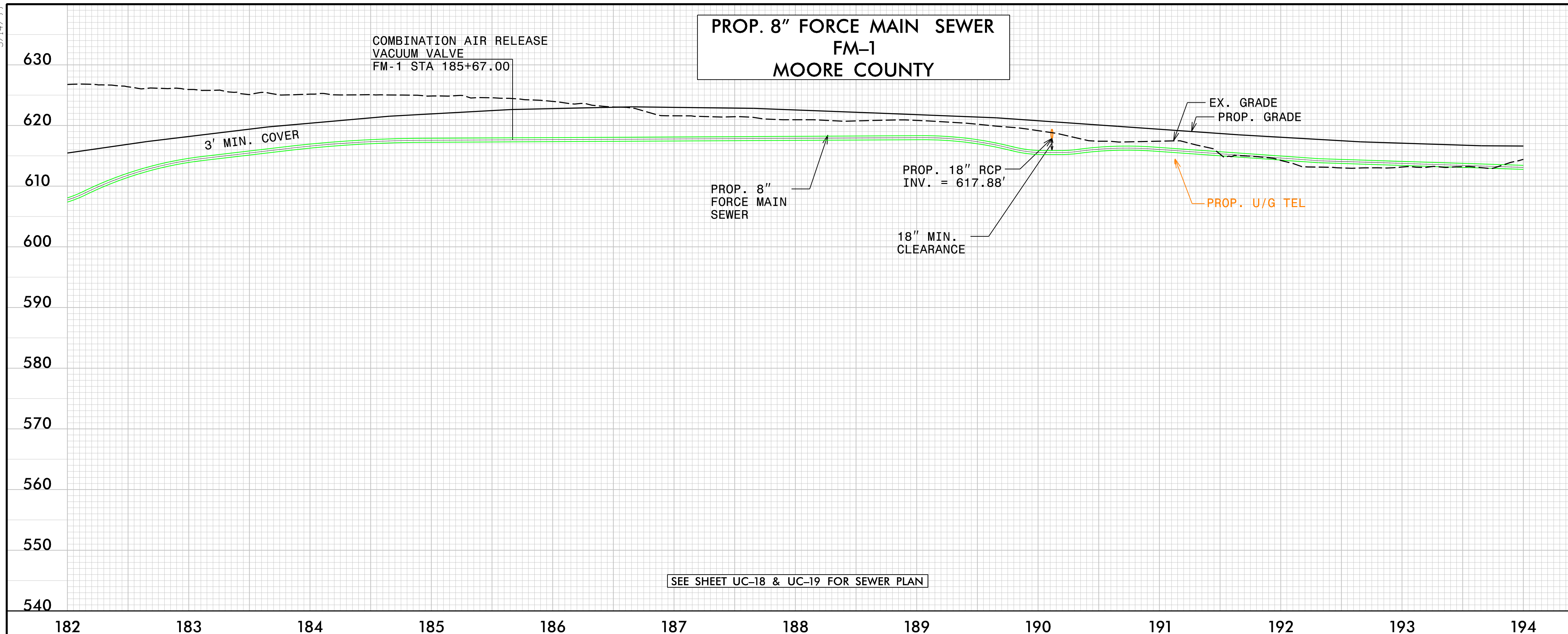


**PROP. 8" FORCE MAIN SEWER
FM-1
MOORE COUNTY**

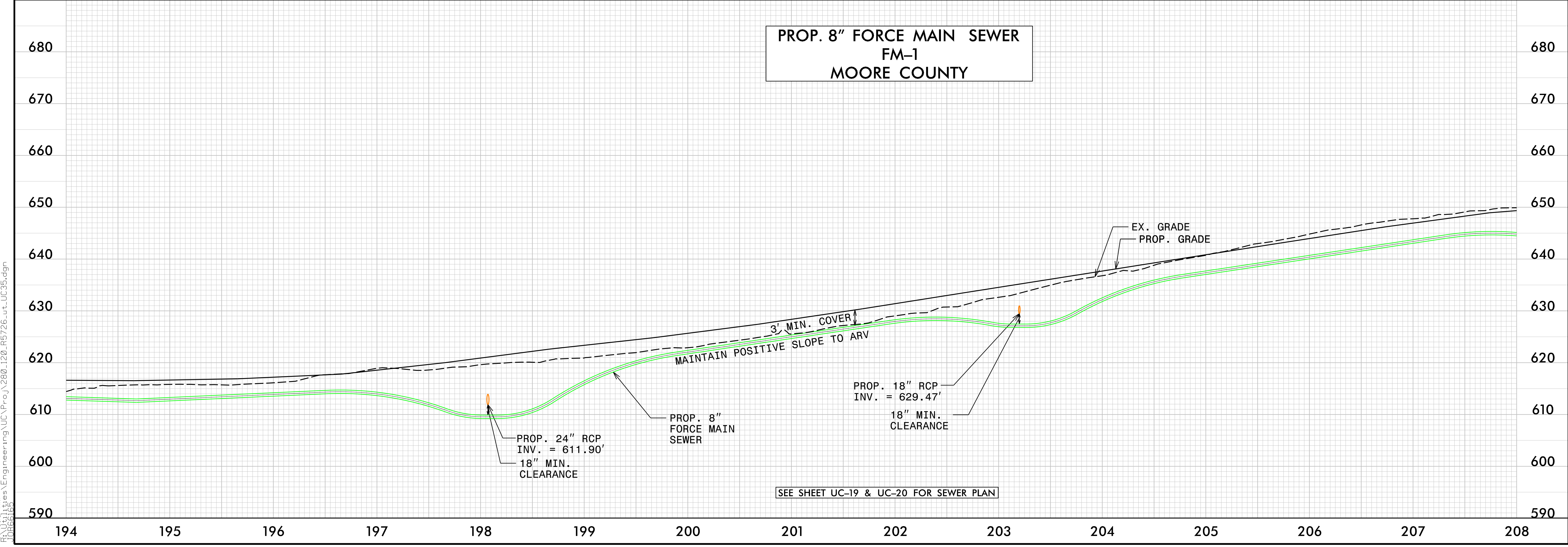
SEE SHEET UC-17 & UC-18 FOR SEWER PLAN

I:\04910 AM
 R-5726 UC-34.dgn
 5/14/99

5/14/99

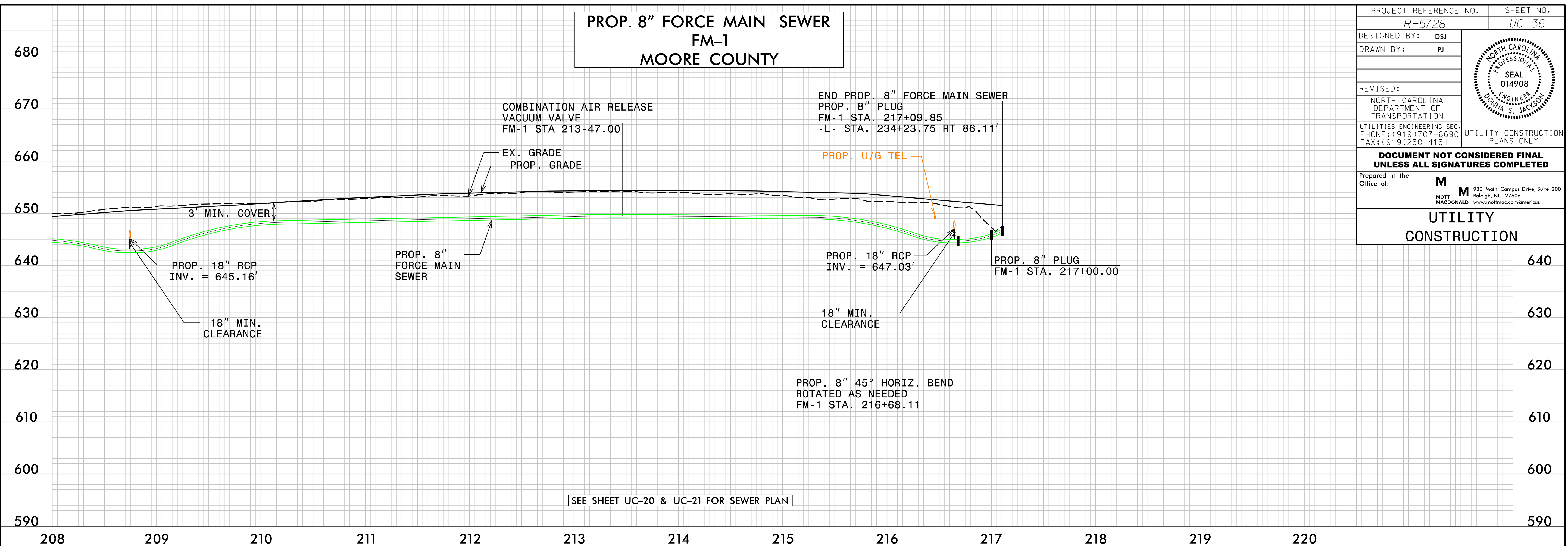


PROJECT REFERENCE NO.	R-5726	SHEET NO.	UC-35
DESIGNED BY:	DSJ		
DRAWN BY:	PJ		
REVISED:			
NORTH CAROLINA DEPARTMENT OF TRANSPORTATION			
UTILITIES ENGINEERING SEC. PHONE: (919) 707-6690 FAX: (919) 250-4151		UTILITY CONSTRUCTION PLANS ONLY	
DOCUMENT NOT CONSIDERED FINAL UNLESS ALL SIGNATURES COMPLETED			
Prepared in the Office of:		M MOTT MACDONALD 938 Main Campus Drive, Suite 200 Raleigh, NC 27606 www.mottmac.com/americas	
UTILITY CONSTRUCTION			



I:\04913_A\Projects\Engineering\UC\Proj\280.120.R5726.ut_UC35.dgn

PROP. 8" FORCE MAIN SEWER FM-1 MOORE COUNTY

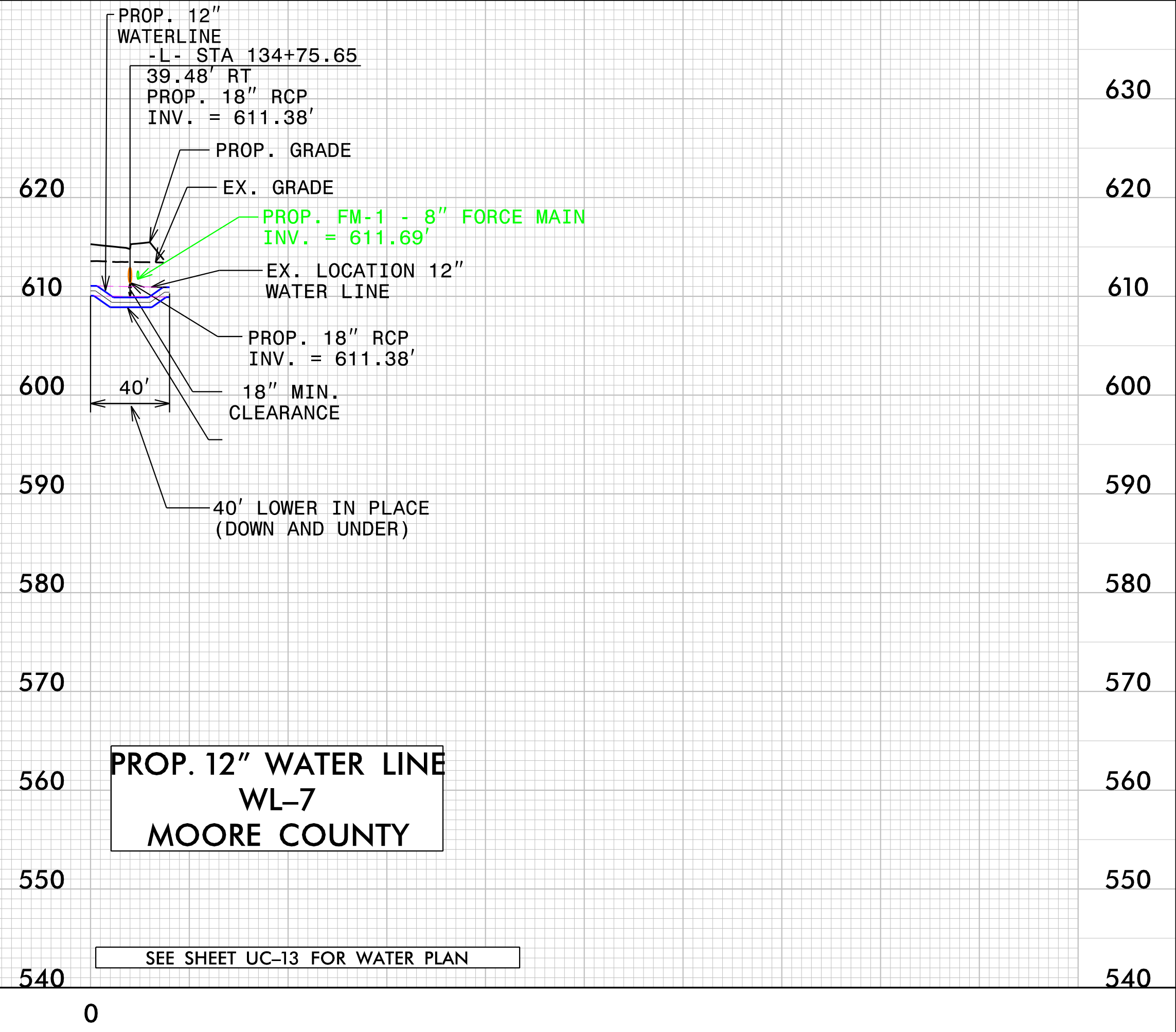
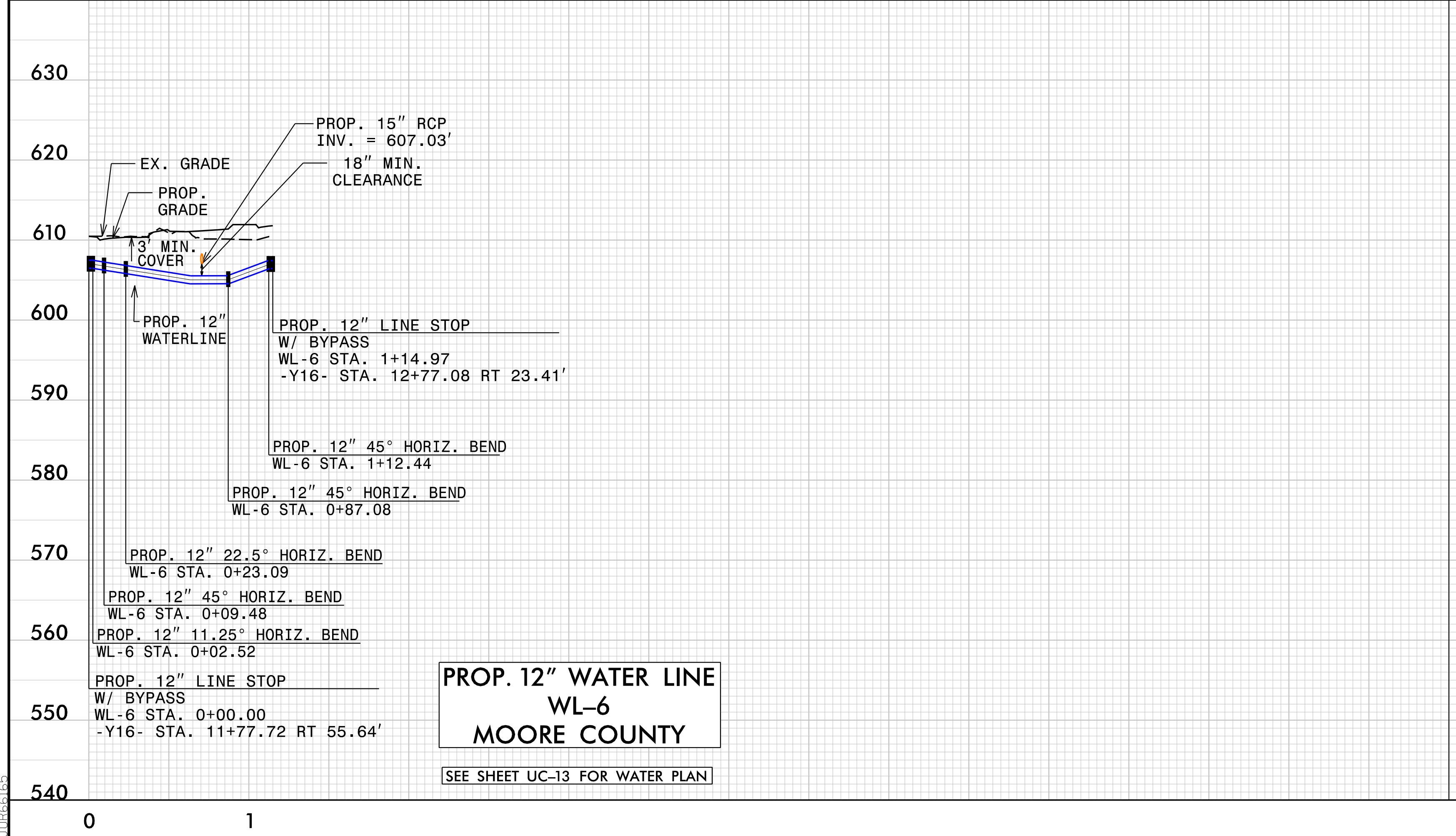


SEE SHEET UC-20 & UC-21 FOR SEWER PLAN

PROJECT REFERENCE NO. R-5726		SHEET NO. UC-36
DESIGNED BY: DSJ	<div style="border: 1px solid black; border-radius: 50%; width: 40px; height: 40px; display: flex; align-items: center; justify-content: center; margin: 0 auto;"> </div>	
DRAWN BY: PJ		
REVISED:		
NORTH CAROLINA DEPARTMENT OF TRANSPORTATION		UTILITY CONSTRUCTION PLANS ONLY
UTILITIES ENGINEERING SEC. PHONE: (919) 707-6690 FAX: (919) 250-4151		
DOCUMENT NOT CONSIDERED FINAL UNLESS ALL SIGNATURES COMPLETED		
Prepared in the Office of:	<div style="text-align: center;"> </div>	
UTILITY CONSTRUCTION		

5/14/99

PROJECT REFERENCE NO.	SHEET NO.
R-5726	UC-37
DESIGNED BY: DSJ	
DRAWN BY: PJ	
REVISED:	
NORTH CAROLINA DEPARTMENT OF TRANSPORTATION UTILITIES ENGINEERING SEC. PHONE: (919) 707-6690 FAX: (919) 250-4151	
UTILITY CONSTRUCTION PLANS ONLY	
DOCUMENT NOT CONSIDERED FINAL UNLESS ALL SIGNATURES COMPLETED	
Prepared in the Office of:	M MOTT MACDONALD 930 Main Campus Drive, Suite 200 Raleigh, NC 27606 www.mottmac.com/americas
UTILITY CONSTRUCTION	



H:\2005\41 AM\1155\Engineering\UC\Proj\2801_130_R5726.ut-UC37.dgn

590
580
570
560
550
540

630
620
610
600
590
580
570
560
550
540