

PROJECT REFERENCE NO. <i>R-5726</i>	SHEET NO. <i>EC-42/CONST.19</i>
ROADWAY DESIGN ENGINEER	HYDRAULICS ENGINEER
MOTT MACDONALD I & E, LLC LICENSE NO. F-0669	HDR ENGINEERING LICENSE NO. F-0116

Prepared in the Office of:

M PO Box 700
Fuquay-Varina, NC 27526
MOTT MACDONALD www.mottmac.com/americas

HDR HDR Engineering, Inc. of the Carolinas
555 Fayetteville St., Suite 900, Raleigh, NC 27601
N.C.B.E.L.S. License Number: F-0116

FOR -L- PROFILE SEE SHEET 34
FOR -Y20- PROFILE SEE SHEET 42
FOR INTERSECTION DETAIL SEE SHEET 2B-4
FOR DITCH DETAILS SEE SHEET 2D-1
FOR DRY DETENTION BASIN DETAILS SEE SHEET 2D-2 AND 2D-3

8/17/99

MATCHLINE -L- STA. 204 + 00.00 SEE SHEET NO. 18

MATCHLINE -L- STA. 217 + 50.00 SEE SHEET NO. 20

NOTE: UTILIZE FABRIC INSERT INLET PROTECTION DEVICES IN LIEU OF ROCK INLET SEDIMENT TRAPS, TYPE C AS DIRECTED BY THE ENGINEER TO AVOID IMPOUNDMENT OF RUNOFF IN ROADWAY OPEN TO TRAFFIC

105 x 35 x 3
2.0 inch Skimmer
with 1.75 inch
Orifice Diameter
14 ft. weir
ID 19.4 B

70 x 25 x 3
1.5 inch Skimmer
with 1.25 inch
Orifice Diameter
6 ft. weir
ID 19.1 B

30 x 80 x 3
1.5 inch Skimmer
with 1.375 inch
Orifice Diameter
9 ft. weir
ID 19.2 B

4.0 inch Skimmer
with 3.5 inch
Orifice Diameter
ID 19.3F

UTILIZE STORMWATER BASIN(S) AS SILT BASIN DURING CONSTRUCTION.

ALL DRIVEWAY RADII ARE 10' UNLESS OTHERWISE NOTED ON PLANS.

7/2/2024
R-5726-EC-PSH-L-F.dgn
8:57:47 AM

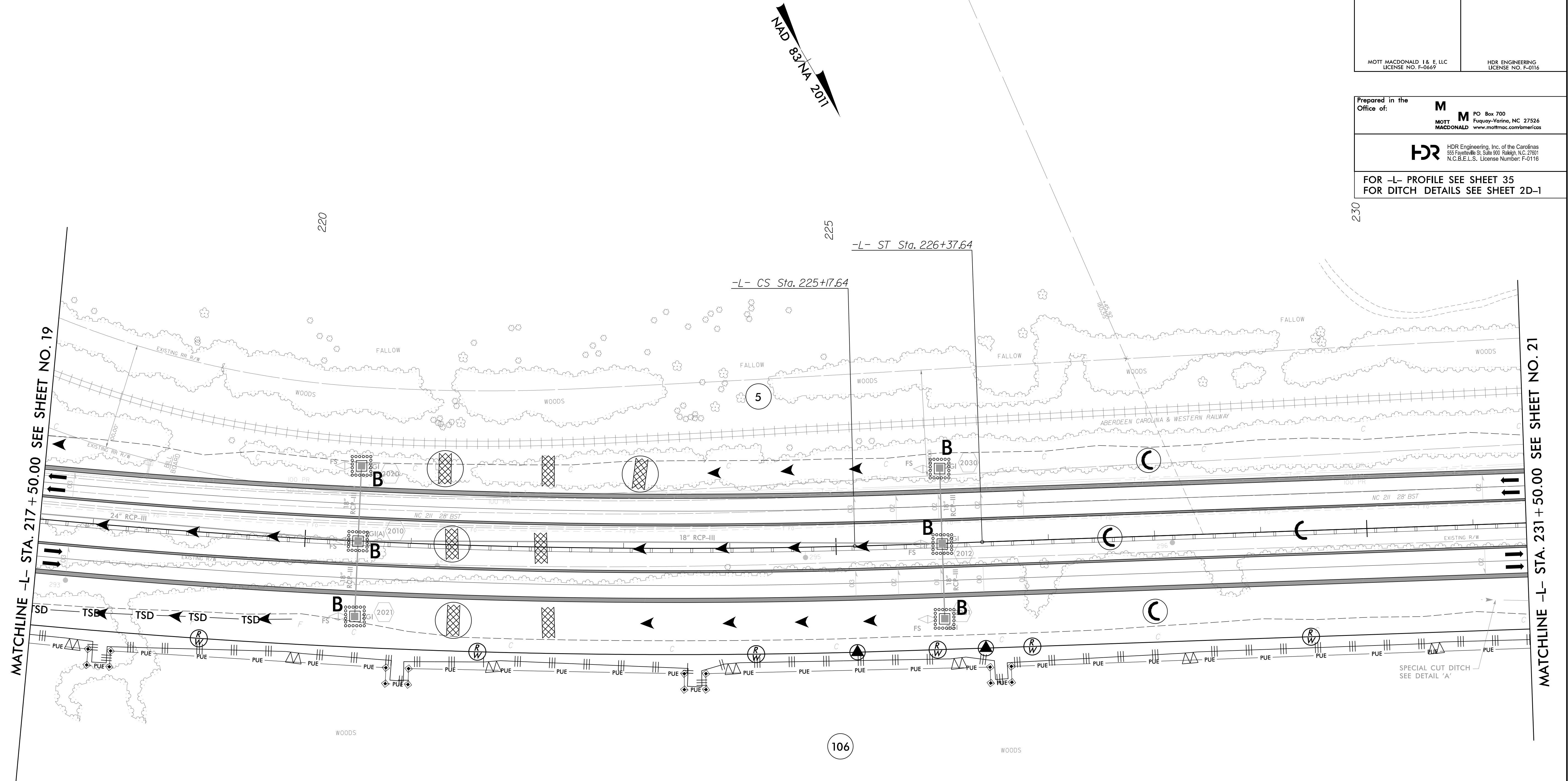
8/17/99

PROJECT REFERENCE NO. <i>R-5726</i>	SHEET NO. <i>EC-43/CONST.20</i>
ROADWAY DESIGN ENGINEER	HYDRAULICS ENGINEER
MOTT MACDONALD I & E, LLC LICENSE NO. F-0669	HDR ENGINEERING LICENSE NO. F-0116

Prepared in the Office of:
M PO Box 700
 Fuquay-Varina, NC 27526
MOTT MACDONALD www.mottmac.com/americas

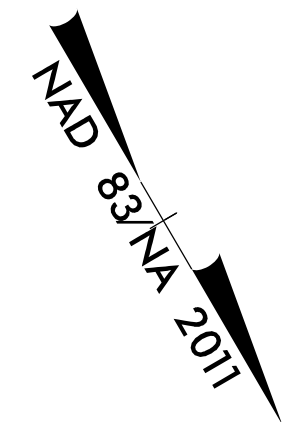
HDR HDR Engineering, Inc. of the Carolinas
 555 Fayetteville St., Suite 900, Raleigh, NC 27601
 N.C.B.E.L.S. License Number: F-0116

FOR -L- PROFILE SEE SHEET 35
 FOR DITCH DETAILS SEE SHEET 2D-1



MATCHLINE -L- STA. 217 + 50.00 SEE SHEET NO. 19

MATCHLINE -L- STA. 231 + 50.00 SEE SHEET NO. 21



7/2/2024
 R:\5726\EC-43\CONST-PSH-F.dgn
 8:47:35 AM

ALL DRIVEWAY RADII ARE 10' UNLESS OTHERWISE NOTED ON PLANS.

8/17/99

PROJECT REFERENCE NO. <i>R-5726</i>	SHEET NO. <i>EC-44/CONST.21</i>
ROADWAY DESIGN ENGINEER	HYDRAULICS ENGINEER
MOTT MACDONALD I & E, LLC LICENSE NO. F-0669	HDR ENGINEERING LICENSE NO. F-0116

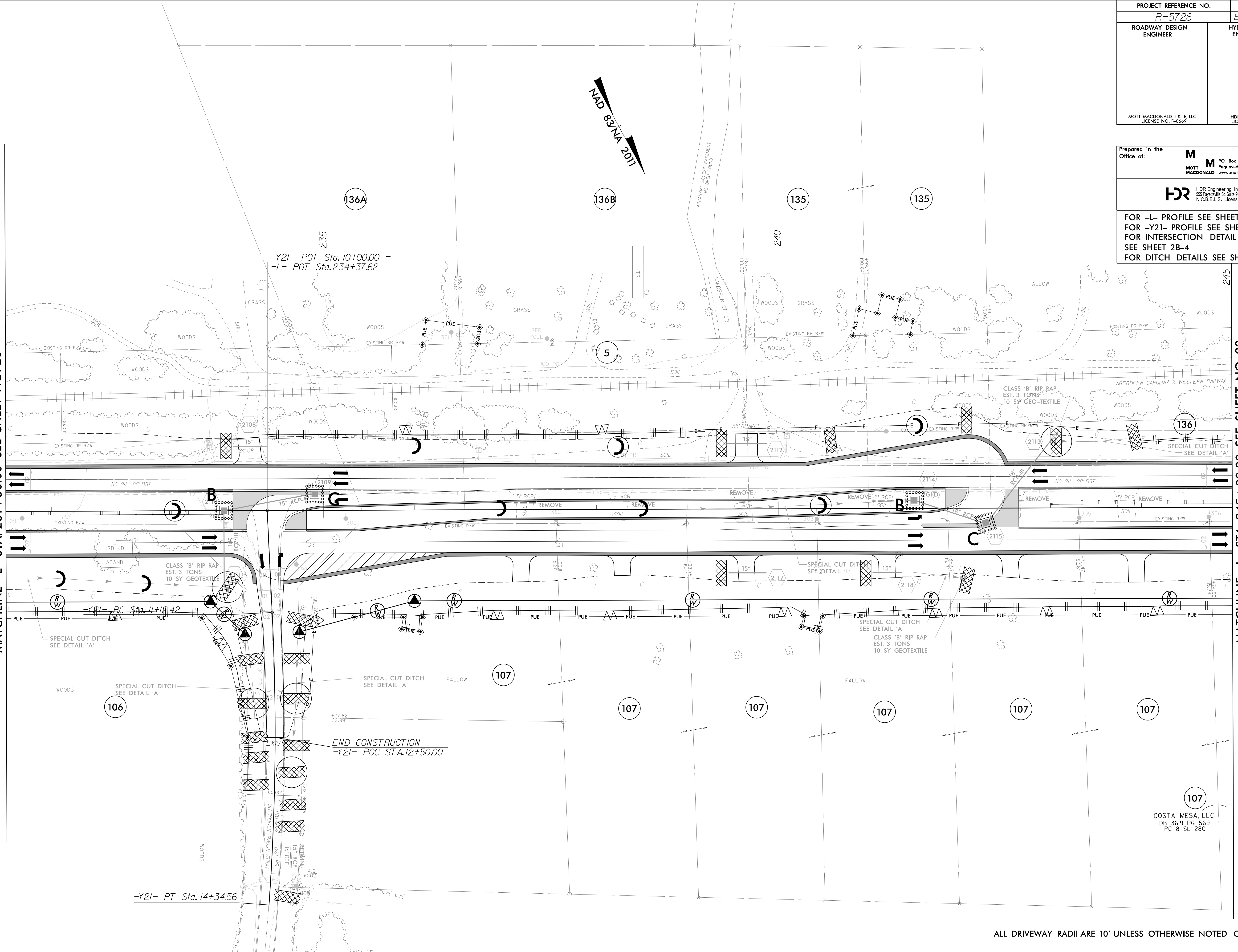
Prepared in the Office of: **M** MOTT MACDONALD
 PO Box 700
 Fuquay-Varina, NC 27526
 www.mottmac.com/americas

HDR HDR Engineering, Inc. of the Carolinas
 555 Fayetteville St., Suite 900, Raleigh, NC 27601
 N.C.B.E.L.S. License Number: F-0116

FOR -L- PROFILE SEE SHEET 35
 FOR -Y21- PROFILE SEE SHEET 42
 FOR INTERSECTION DETAIL SEE SHEET 2B-4
 FOR DITCH DETAILS SEE SHEET 2D-1

MATCHLINE -L- STA. 231 + 50.00 SEE SHEET NO. 20

MATCHLINE -L- STA. 245 + 00.00 SEE SHEET NO. 22



7/2/2024 11:56:56 AM EC_PSH.F.dgn

ALL DRIVEWAY RADII ARE 10' UNLESS OTHERWISE NOTED ON PLANS.

8/17/99

PROJECT REFERENCE NO. <i>R-5726</i>	SHEET NO. <i>EC-45/CONST.22</i>
ROADWAY DESIGN ENGINEER	HYDRAULICS ENGINEER
MOTT MACDONALD I & E, LLC LICENSE NO. F-0669	HDR ENGINEERING LICENSE NO. F-0116

Prepared in the Office of:

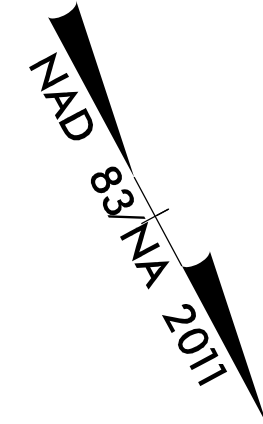
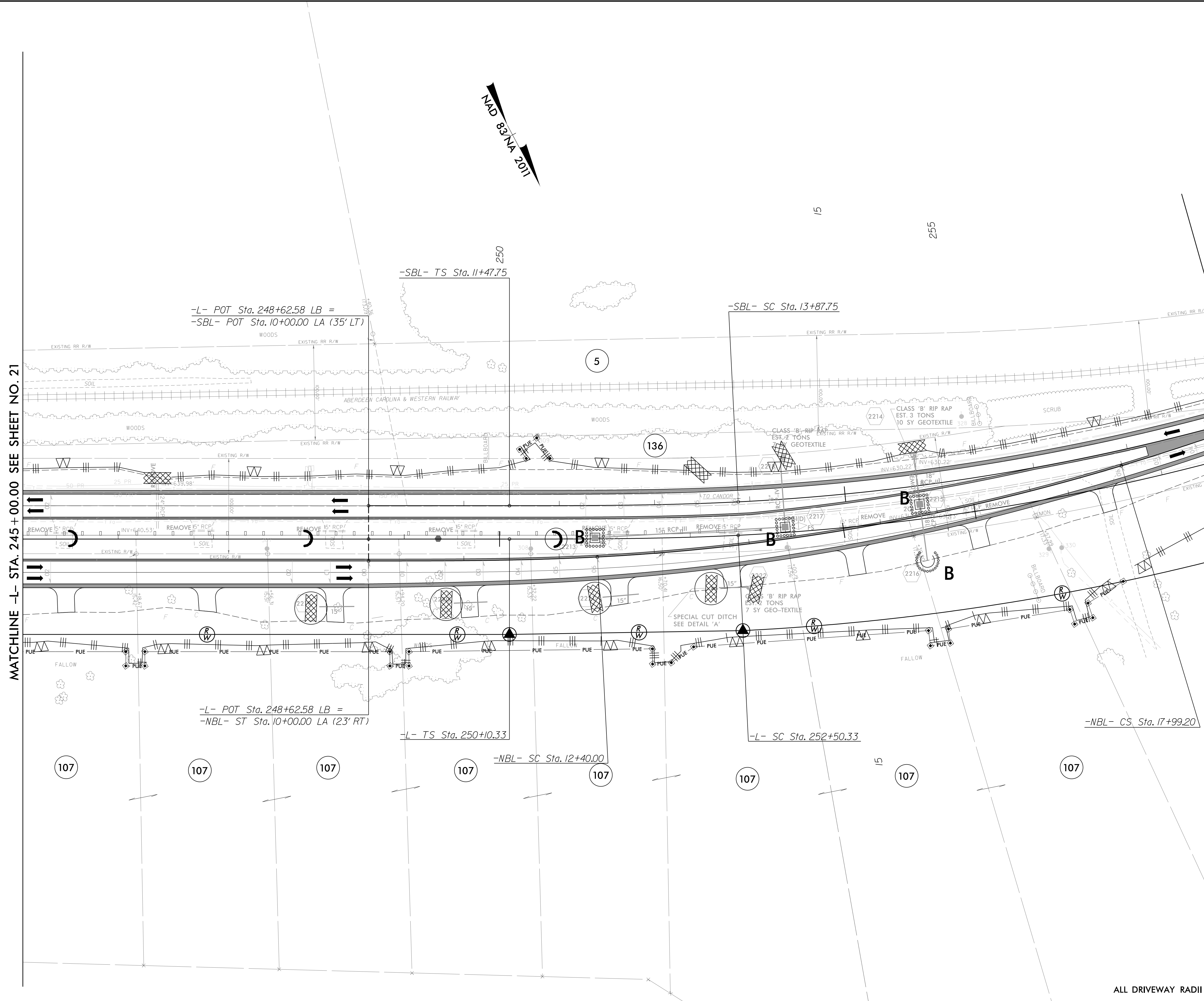
M MOTT MACDONALD
 PO Box 700
 Fuquay-Varina, NC 27526
 www.mottmac.com/americas

HDR HDR Engineering, Inc. of the Carolinas
 555 Fayetteville St., Suite 900, Raleigh, NC 27601
 N.C.B.E.L.S. License Number: F-0116

FOR -L- PROFILE SEE SHEET 36
 FOR -NBL- PROFILE SEE SHEET 37
 FOR -SBL- PROFILE SEE SHEET 37
 FOR DITCH DETAILS SEE SHEET 2D-1

MATCHLINE -L- STA. 245+00.00 SEE SHEET NO. 21

MATCHLINE -L- STA. 258+00.00 SEE SHEET NO. 23



7/2/2024 11:56:56 AM EC_PSH.F.dgn

ALL DRIVEWAY RADII ARE 10' UNLESS OTHERWISE NOTED ON PLANS.

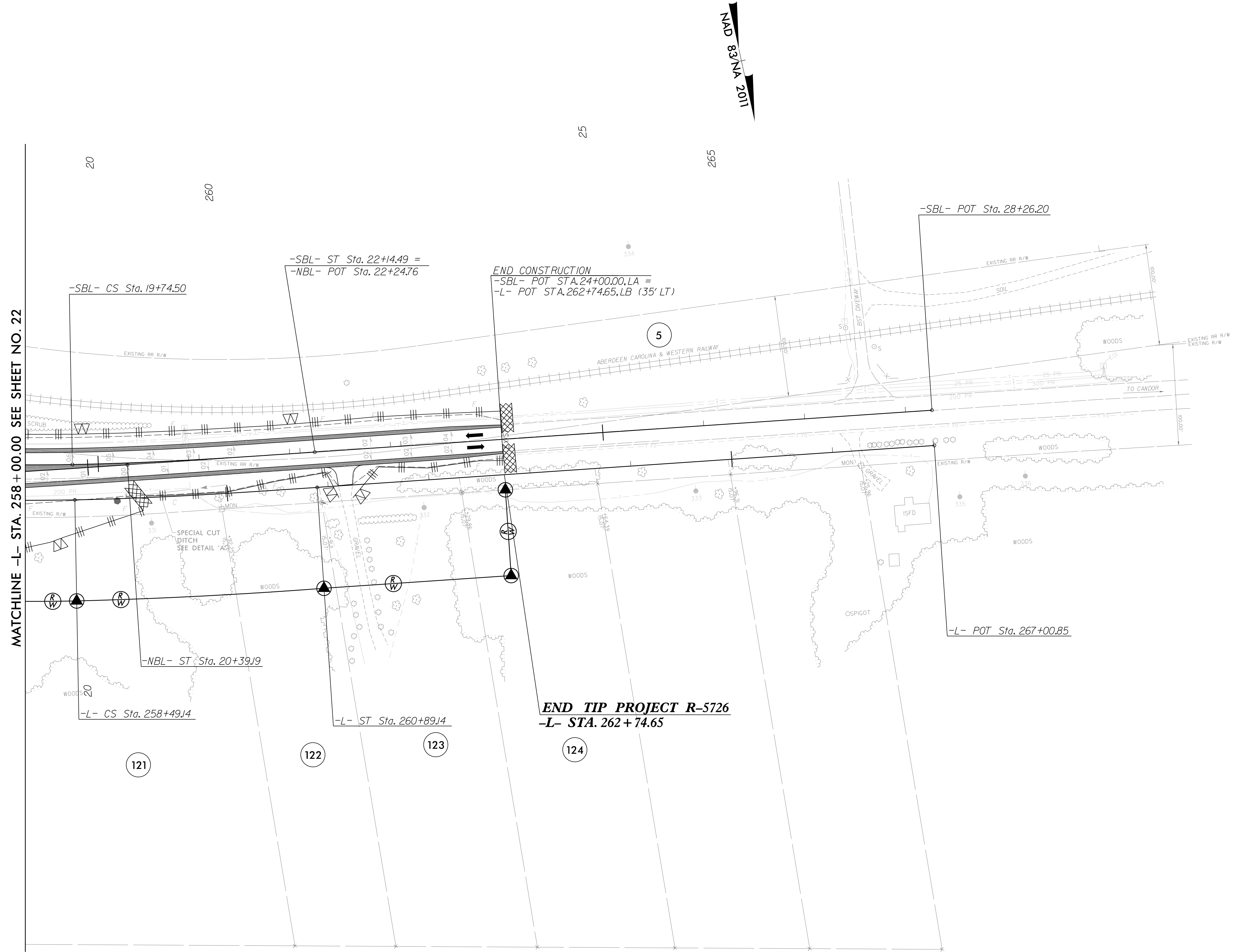
8/17/99

PROJECT REFERENCE NO. <i>R-5726</i>	SHEET NO. <i>EC-46/CONST.23</i>
ROADWAY DESIGN ENGINEER	HYDRAULICS ENGINEER
MOTT MACDONALD I & E, LLC LICENSE NO. F-0669	HDR ENGINEERING LICENSE NO. F-0116

Prepared in the Office of: **M** MOTT MACDONALD
 PO Box 700 Fuquay-Varina, NC 27526
 www.mottmac.com/americas

HDR HDR Engineering, Inc. of the Carolinas
 555 Fayetteville St., Suite 900, Raleigh, NC 27601
 N.C.B.E.L.S. License Number: F-0116

FOR -L- PROFILE SEE SHEET 36
 FOR -NBL- PROFILE SEE SHEET 37
 FOR -SBL- PROFILE SEE SHEET 37
 FOR DITCH DETAILS SEE SHEET 2D-1



7/2/2024
 R:\S\5726\EC-PSH\F.dgn
 8:58:23 AM

ALL DRIVEWAY RADII ARE 10' UNLESS OTHERWISE NOTED ON PLANS.

8/17/99

PROJECT REFERENCE NO. <i>R-5726</i>	SHEET NO. <i>EC-47/CONST.24</i>
ROADWAY DESIGN ENGINEER	HYDRAULICS ENGINEER
MOTT MACDONALD I & E, LLC LICENSE NO. F-0669	HDR ENGINEERING LICENSE NO. F-0116

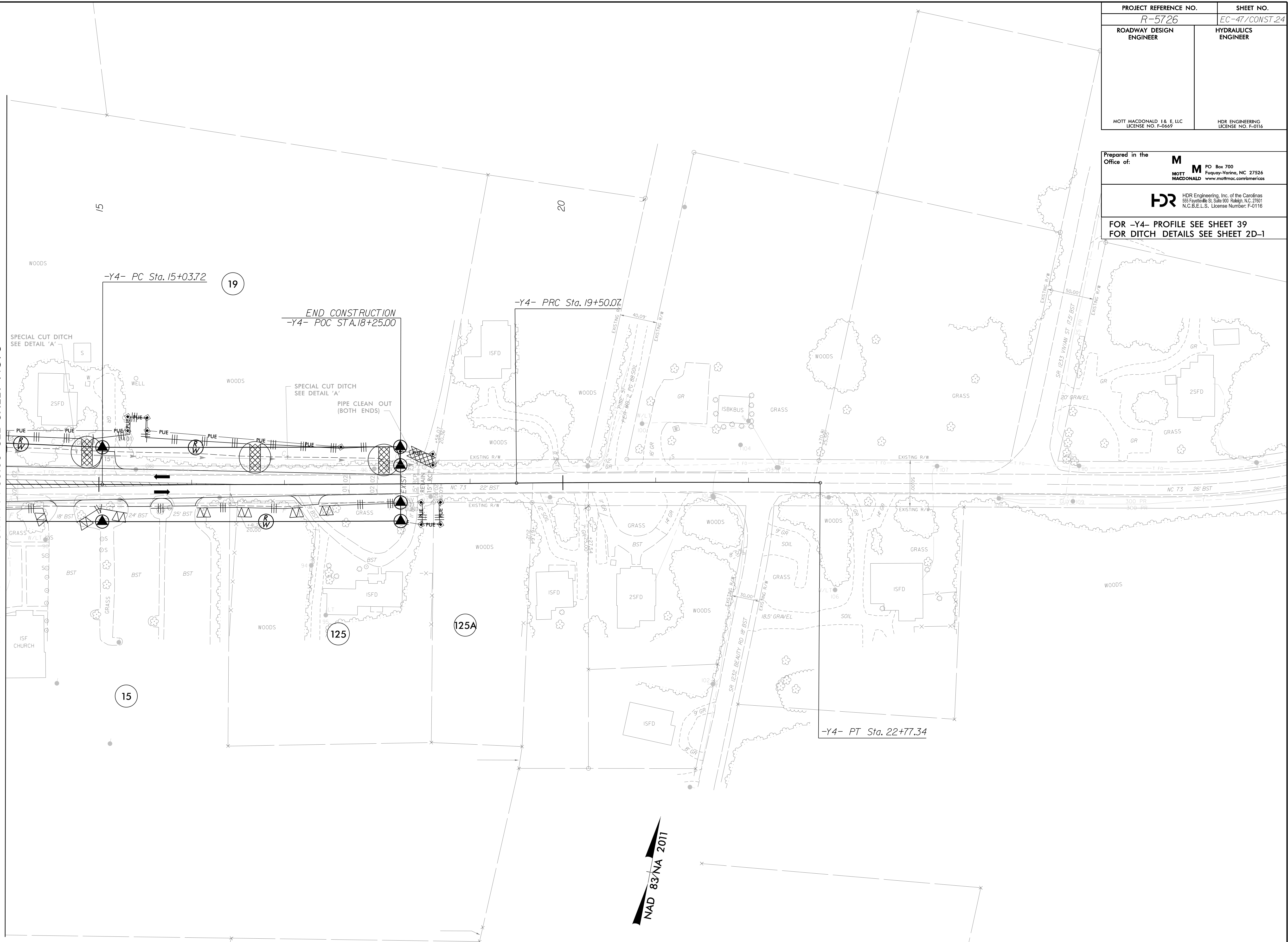
Prepared in the Office of:

M PO Box 700
Fuquay-Varina, NC 27526
MOTT MACDONALD www.mottmac.com/americas

HDR HDR Engineering, Inc. of the Carolinas
555 Fayetteville St., Suite 900, Raleigh, NC 27601
N.C.B.E.L.S. License Number: F-0116

FOR -Y4- PROFILE SEE SHEET 39
FOR DITCH DETAILS SEE SHEET 2D-1

MATCHLINE -Y4- STA. 14 + 00.00 SEE SHEET NO. 5



7/2/2024 11:56:26 AM
R:\5726\EC_PSH\F.dgn
3:38:33 AM

ALL DRIVEWAY RADII ARE 10' UNLESS OTHERWISE NOTED ON PLANS.

8/17/99

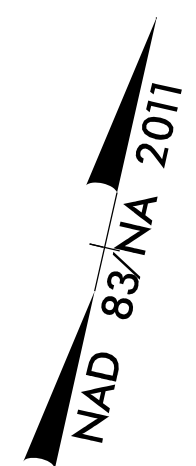
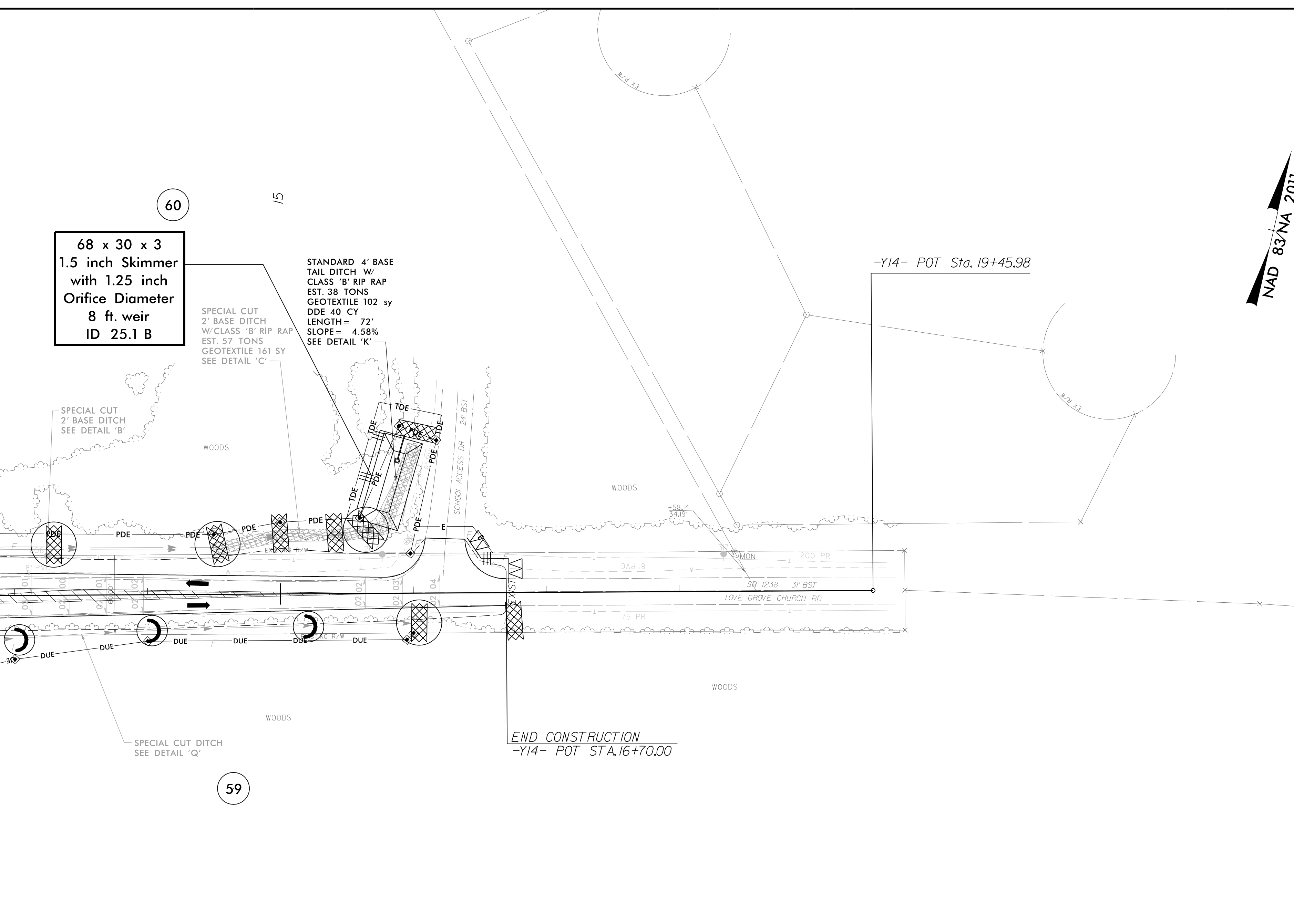
PROJECT REFERENCE NO. <i>R-5726</i>	SHEET NO. <i>EC-48/CONST.25</i>
ROADWAY DESIGN ENGINEER	HYDRAULICS ENGINEER
MOTT MACDONALD I & E, LLC LICENSE NO. F-0669	HDR ENGINEERING LICENSE NO. F-0116

Prepared in the Office of: **M** MOTT MACDONALD
 PO Box 700
 Fuquay-Varina, NC 27526
 www.mottmac.com/americas

HDR HDR Engineering, Inc. of the Carolinas
 555 Fayetteville St., Suite 900, Raleigh, NC 27601
 N.C.B.E.L.S. License Number: F-0116

FOR -Y14- PROFILE SEE SHEET 41
 FOR DITCH DETAILS SEE SHEET 2D-1

MATCHLINE -Y14- STA. 13 + 00.00 SEE SHEET NO. 10



7/2/2024 11:56:56 AM R:\S\6726\EC_PSH.F.dgn

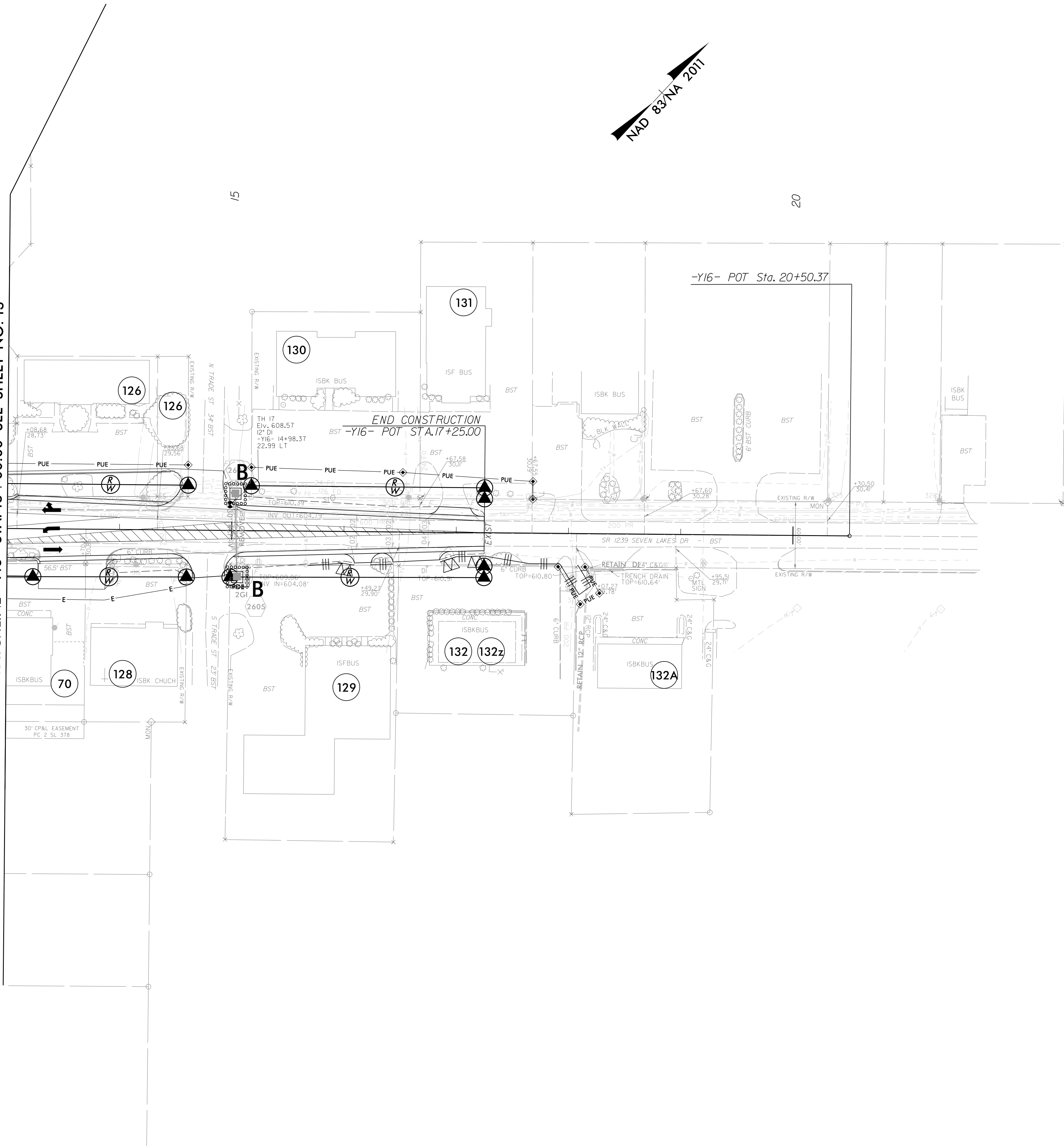
ALL DRIVEWAY RADII ARE 10' UNLESS OTHERWISE NOTED ON PLANS.

8/17/99

EC-12A/CONST12A

7/2/2024
R-5726-EC-PSH.F.dgn
R-5726-EC-PSH.F.dgn

MATCHLINE -Y16- STA. 13 + 00.00 SEE SHEET NO. 13



PROJECT REFERENCE NO. <i>R-5726</i>	SHEET NO. <i>EC-49/CONST.26</i>
ROADWAY DESIGN ENGINEER	HYDRAULICS ENGINEER
MOTT MACDONALD I & E, LLC LICENSE NO. F-0669	HDR ENGINEERING LICENSE NO. F-0116

Prepared in the Office of:

M MOTT MACDONALD
 PO Box 700
 Fuquay-Varina, NC 27526
 www.mottmac.com/americas

HDR HDR Engineering, Inc. of the Carolinas
 555 Fayetteville St., Suite 900, Raleigh, NC 27601
 N.C.B.E.L.S. License Number: F-0116

FOR -Y16- PROFILE SEE SHEET 41
 FOR DITCH DETAILS SEE SHEET 2D-1

ALL DRIVEWAY RADII ARE 10' UNLESS OTHERWISE NOTED ON PLANS.