

8/17/99

PROJECT REFERENCE NO. <i>R-5726</i>	SHEET NO. <i>EC-26/CONST.26</i>
ROADWAY DESIGN ENGINEER	HYDRAULICS ENGINEER
MOTT MACDONALD, I & E, LLC LICENSE NO. F-0669	HDR ENGINEERING LICENSE NO. F-0116

Prepared in the Office of: **M** MOTT MACDONALD, I & E, LLC
 PO Box 700
 Fuquay-Varina, NC 27526
 www.mottmac.com/americas

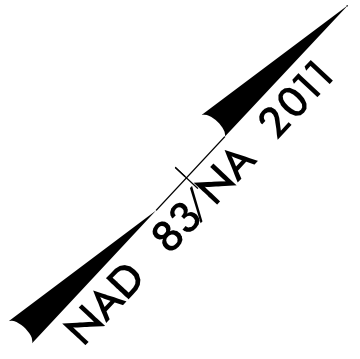
HDR HDR Engineering, Inc. of the Carolinas
 555 Fayetteville St., Suite 900, Raleigh, NC 27601
 N.C.B.E.L.S. License Number: F-0116

FOR -Y16- PROFILE SEE SHEET 41
 FOR DITCH DETAILS SEE SHEET 2D-1

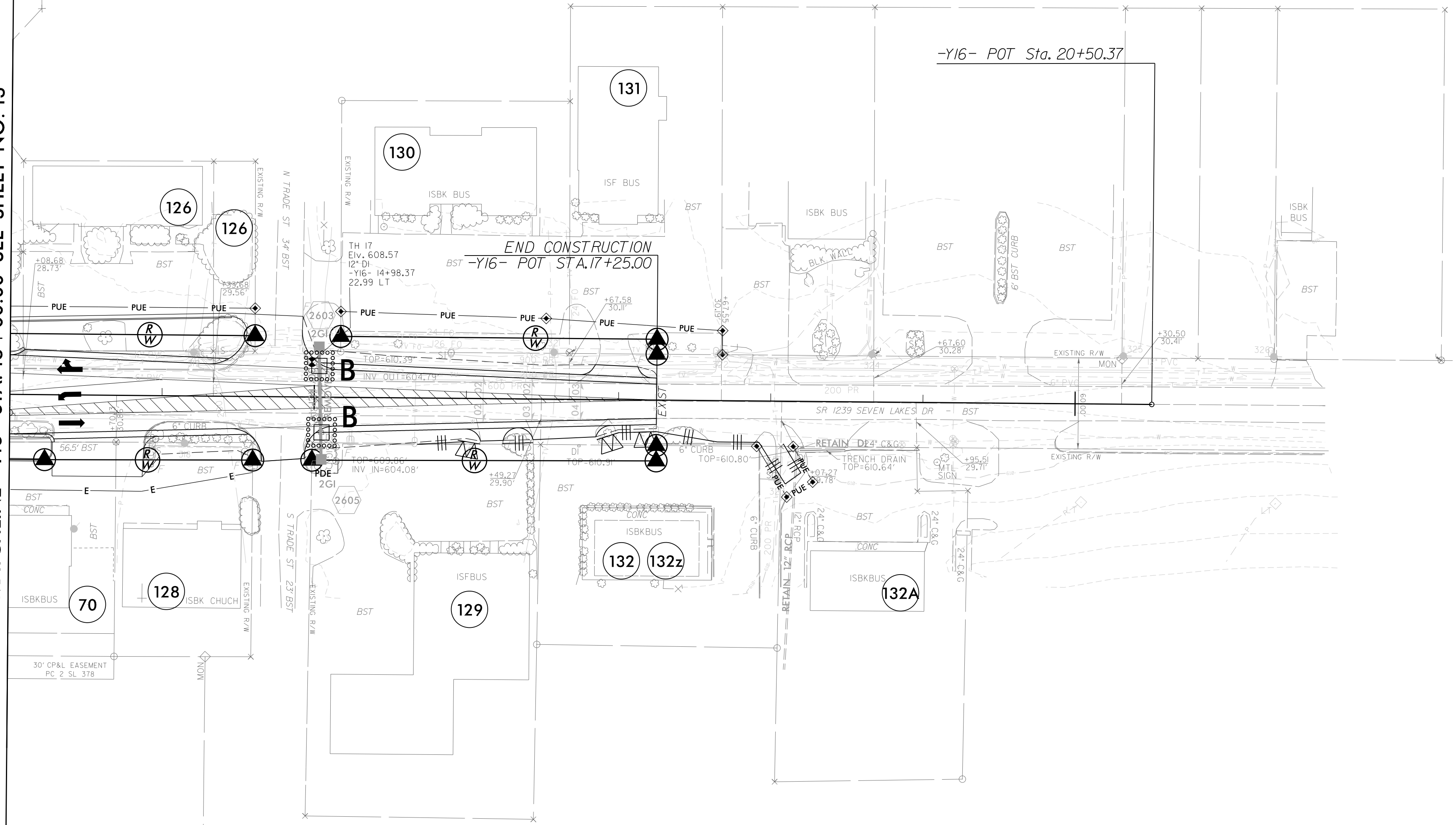
CLEARING AND GRUBBING
 EROSION CONTROL FOR
 CONSTRUCTION SHEET 26

NOTE:
 PLACE TEMPORARY ROCK SEDIMENT DAMS TYPE - B
 AND TEMPORARY ROCK SILT CHECKS TYPE - A AT
 DRAINAGE OUTLETS.

SOME CLEARING WORK SHOWN ON
 THESE PLANS WAS PERFORMED UNDER
 THE R-5726A PROJECT



MATCHLINE -Y16- STA. 13 + 00.00 SEE SHEET NO. 13



20

EC-12A/CONST.12A

7/2/2024
 11:55:39 AM
 R:\5726\EC-PSH-CC.dgn

ALL DRIVEWAY RADII ARE 10' UNLESS OTHERWISE NOTED ON PLANS.

PROJECT REFERENCE NO. R-5726	SHEET NO. EC-27/CONST.04
ROADWAY DESIGN ENGINEER	HYDRAULICS ENGINEER
MOTT MACDONALD I & E, LLC LICENSE NO. F-0669	HDR ENGINEERING LICENSE NO. F-0116

Prepared in the Office of: **M** MOTT MACDONALD
 P PO Box 700 Fuquay-Varina, NC 27526
 www.mottmac.com/americas

HDR HDR Engineering, Inc. of the Carolinas
 555 Fayetteville St., Suite 900, Raleigh, NC 27601
 N.C.B.E.L.S. License Number: F-0116

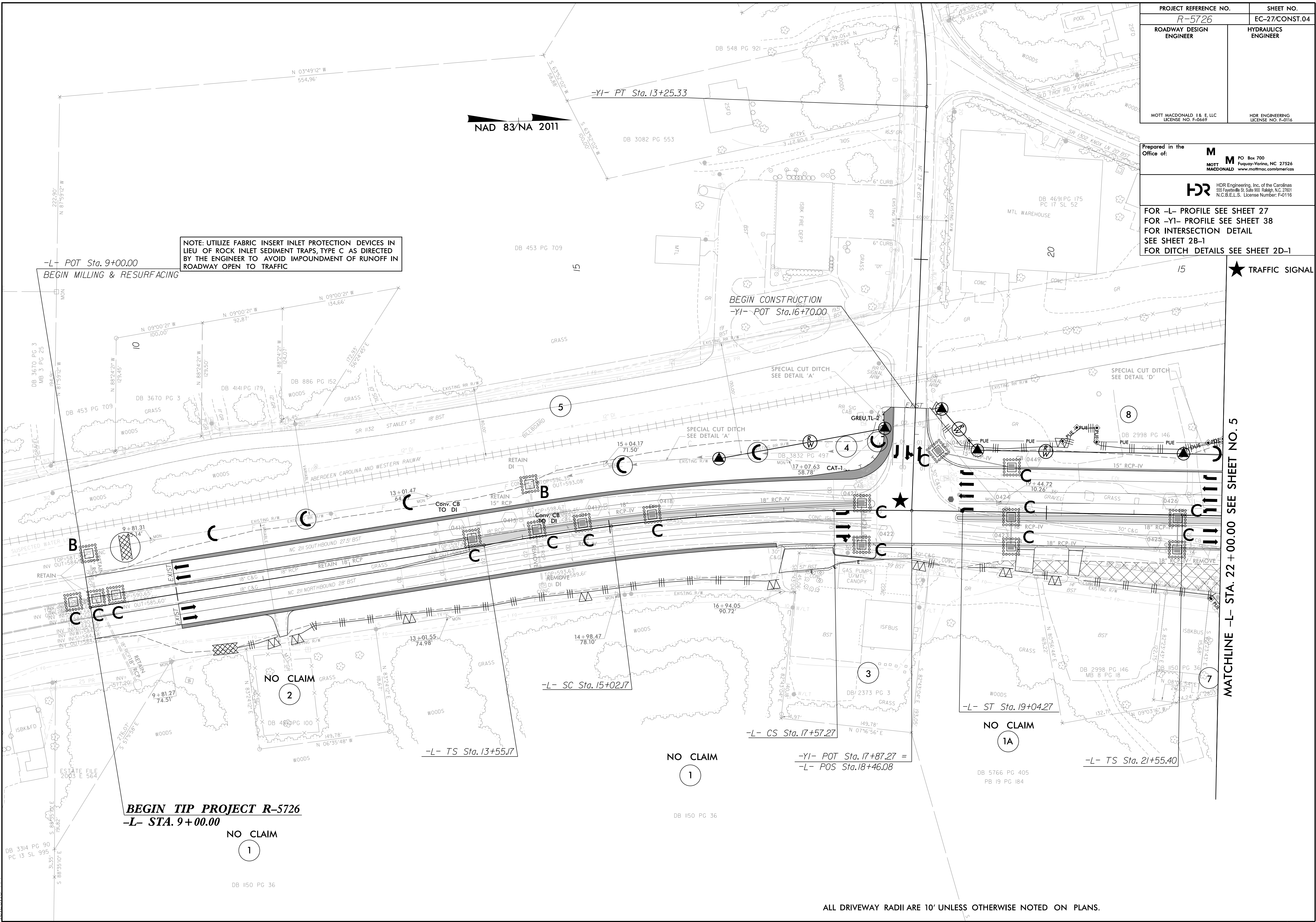
FOR -L- PROFILE SEE SHEET 27
 FOR -Y1- PROFILE SEE SHEET 38
 FOR INTERSECTION DETAIL SEE SHEET 2B-1
 FOR DITCH DETAILS SEE SHEET 2D-1

★ TRAFFIC SIGNAL

MATCHLINE -L- STA. 22 + 00.00 SEE SHEET NO. 5

8/17/99

8/29/2024
 10:28:15 AM
 EC_PSH.F.dgn



NOTE: UTILIZE FABRIC INSERT INLET PROTECTION DEVICES IN LIEU OF ROCK INLET SEDIMENT TRAPS, TYPE C AS DIRECTED BY THE ENGINEER TO AVOID IMPOUNDMENT OF RUNOFF IN ROADWAY OPEN TO TRAFFIC

-L- POT Sta. 9+00.00
 BEGIN MILLING & RESURFACING

BEGIN CONSTRUCTION
 -Y1- POT Sta. 16+70.00

BEGIN TIP PROJECT R-5726
 -L- STA. 9 + 00.00

ALL DRIVEWAY RADII ARE 10' UNLESS OTHERWISE NOTED ON PLANS.

8/17/99

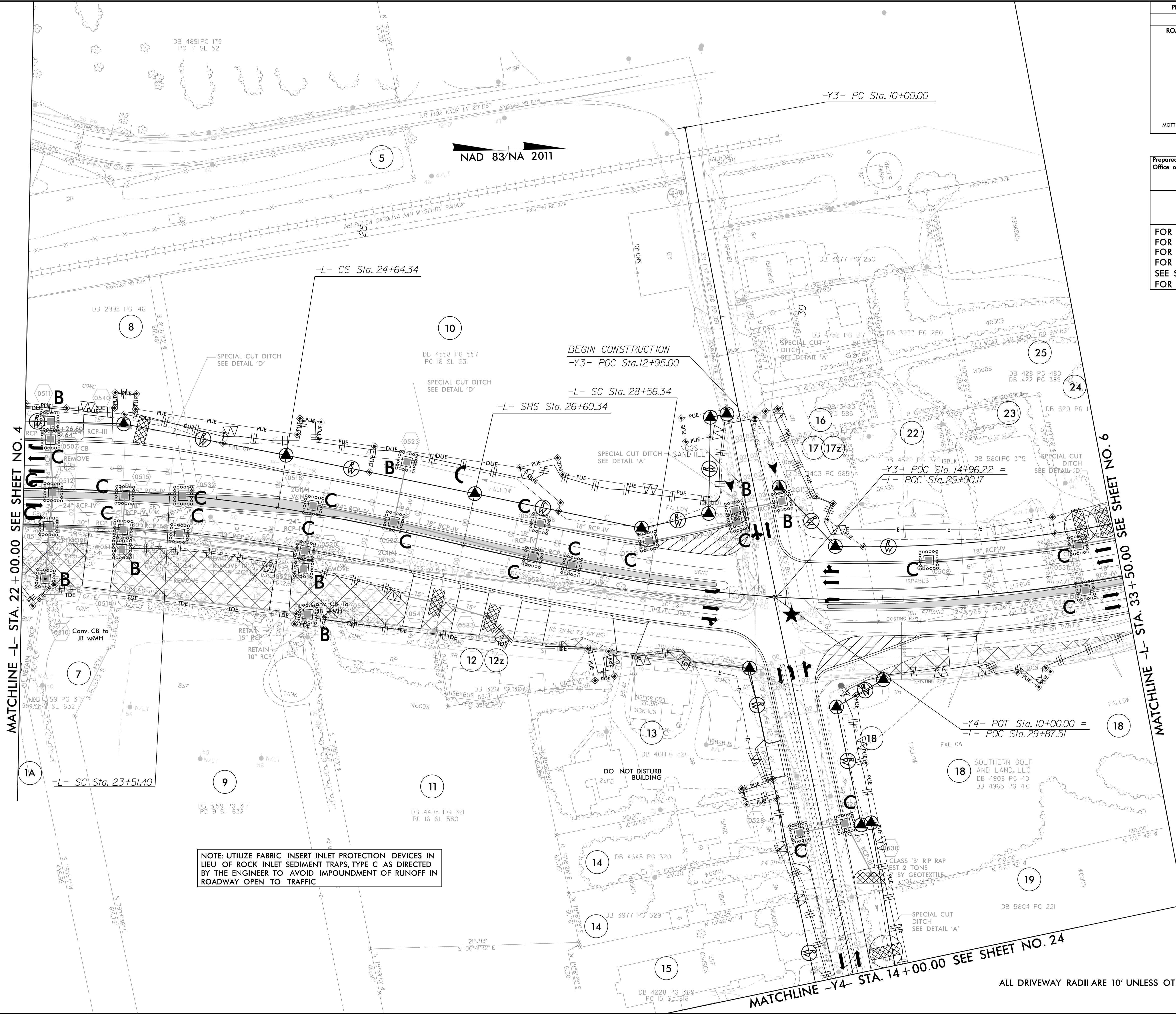
PROJECT REFERENCE NO. <i>R-5726</i>	SHEET NO. EC-28/CONST.05
ROADWAY DESIGN ENGINEER	HYDRAULICS ENGINEER
MOTT MACDONALD I & E, LLC LICENSE NO. F-0669	HDR ENGINEERING LICENSE NO. F-0116

Prepared in the Office of: **M** MOTT MACDONALD
 PO Box 700
 Fuquay-Varina, NC 27526
 www.mottmac.com/americas

HDR HDR Engineering, Inc. of the Carolinas
 555 Fayetteville St., Suite 900, Raleigh, NC 27601
 N.C.B.E.L.S. License Number: F-0116

FOR -L- PROFILE SEE SHEET 27
 FOR -Y3- PROFILE SEE SHEET 38
 FOR -Y4- PROFILE SEE SHEET 39
 FOR INTERSECTION DETAIL SEE SHEET 2B-1
 FOR DITCH DETAILS SEE SHEET 2D-1

★ TRAFFIC SIGNAL



MATCHLINE -L- STA. 22 + 00.00 SEE SHEET NO. 4

MATCHLINE -L- STA. 33 + 50.00 SEE SHEET NO. 6

MATCHLINE -Y4- STA. 14 + 00.00 SEE SHEET NO. 24

NOTE: UTILIZE FABRIC INSERT INLET PROTECTION DEVICES IN LIEU OF ROCK INLET SEDIMENT TRAPS, TYPE C AS DIRECTED BY THE ENGINEER TO AVOID IMPOUNDMENT OF RUNOFF IN ROADWAY OPEN TO TRAFFIC

ALL DRIVEWAY RADII ARE 10' UNLESS OTHERWISE NOTED ON PLANS.

8/29/2024
 10:28:24 AM
 10-28-24-AM_PSH.F.dgn

8/17/99

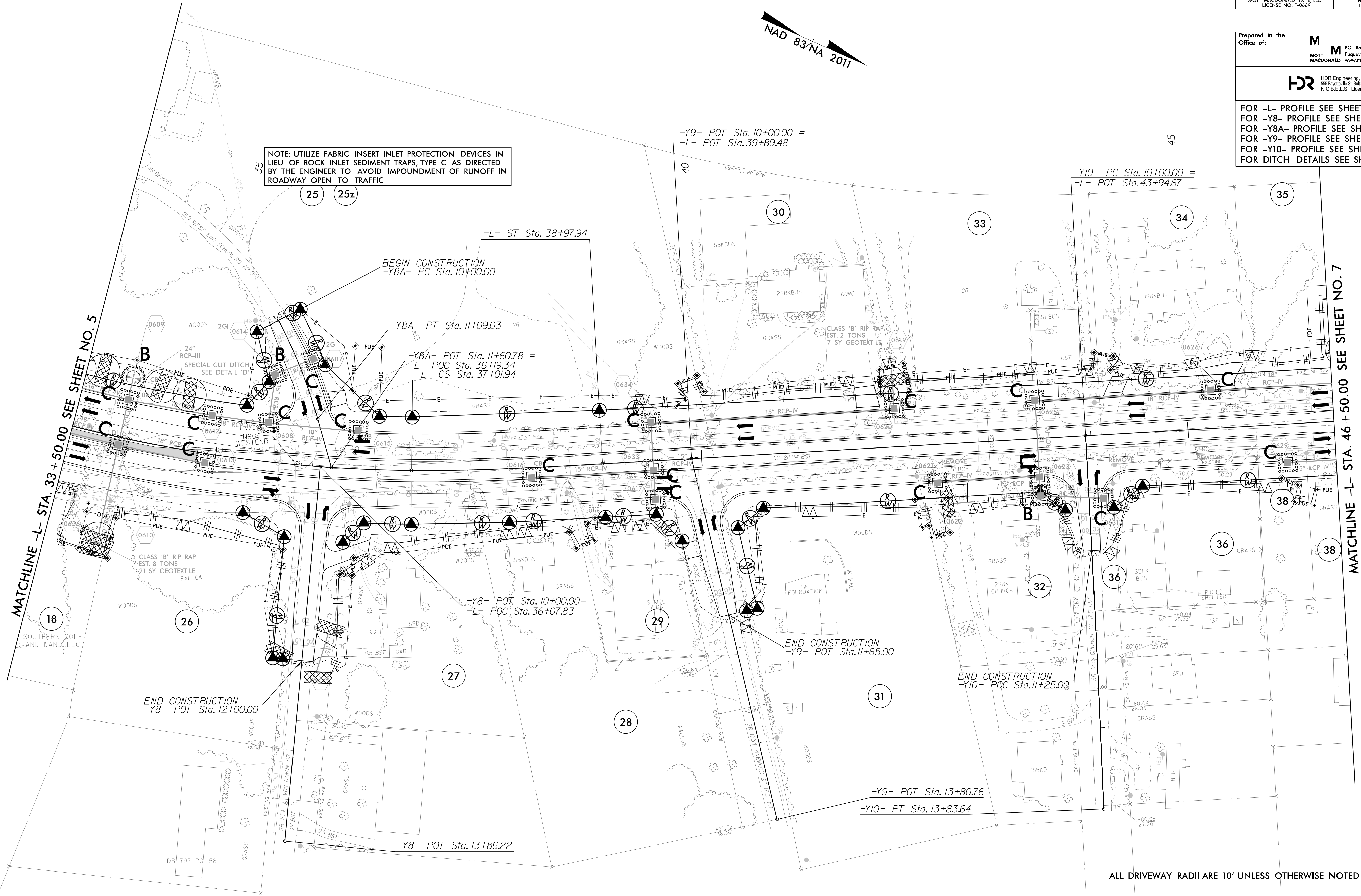
PROJECT REFERENCE NO. <i>R-5726</i>	SHEET NO. <i>EC-29/CONST.06</i>
ROADWAY DESIGN ENGINEER	HYDRAULICS ENGINEER
MOTT MACDONALD I & E, LLC LICENSE NO. F-0669	HDR ENGINEERING LICENSE NO. F-0116

Prepared in the Office of:

M MOTT MACDONALD
 PO Box 700
 Fuquay-Varina, NC 27526
 www.mottmac.com/americas

HDR HDR Engineering, Inc. of the Carolinas
 555 Fayetteville St., Suite 900, Raleigh, NC 27601
 N.C.B.E.L.S. License Number: F-0116

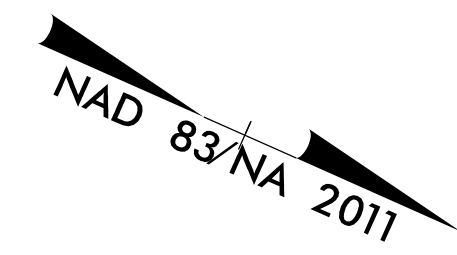
FOR -L- PROFILE SEE SHEET 28
 FOR -Y8- PROFILE SEE SHEET 39
 FOR -Y8A- PROFILE SEE SHEET 39
 FOR -Y9- PROFILE SEE SHEET 40
 FOR -Y10- PROFILE SEE SHEET 40
 FOR DITCH DETAILS SEE SHEET 2D-1



MATCHLINE -L- STA. 33+50.00 SEE SHEET NO. 5

MATCHLINE -L- STA. 46+50.00 SEE SHEET NO. 7

NOTE: UTILIZE FABRIC INSERT INLET PROTECTION DEVICES IN LIEU OF ROCK INLET SEDIMENT TRAPS, TYPE C AS DIRECTED BY THE ENGINEER TO AVOID IMPOUNDMENT OF RUNOFF IN ROADWAY OPEN TO TRAFFIC



7/2/2024
 R-5726-EC-PSH-L.dgn
 8:55:07 AM

ALL DRIVEWAY RADII ARE 10' UNLESS OTHERWISE NOTED ON PLANS.

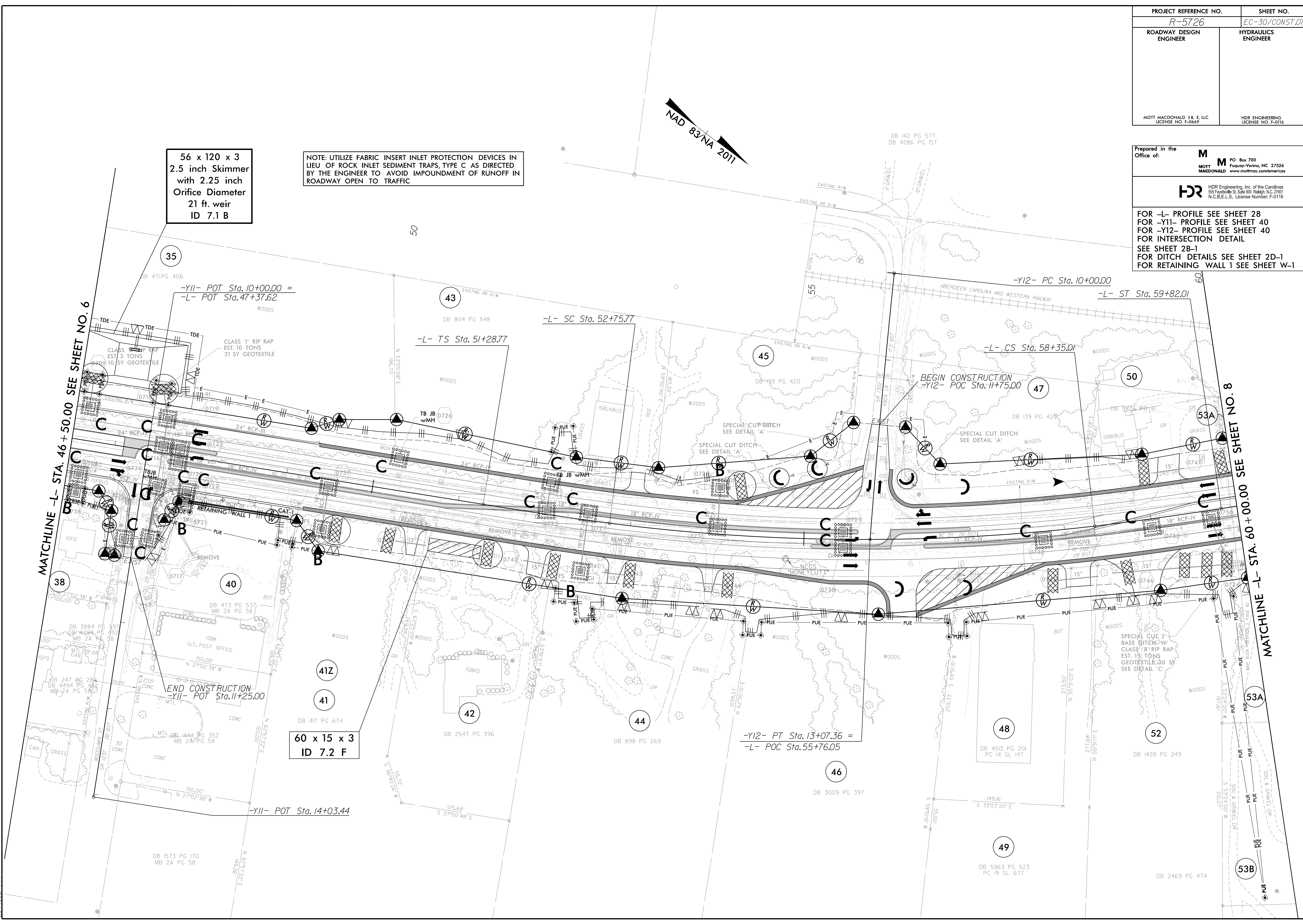
PROJECT REFERENCE NO. <i>R-5726</i>	SHEET NO. <i>EC-30/CONST.07</i>
ROADWAY DESIGN ENGINEER	HYDRAULICS ENGINEER
MOTT MACDONALD I & E LLC LICENSE NO. F-0669	HDR ENGINEERING LICENSE NO. F-0116

Prepared in the Office of: **M** MOTT MACDONALD
 PO Box 700
 Fuquay-Varina, NC 27526
 www.mottmac.com/americas

HDR HDR Engineering, Inc. of the Carolinas
 555 Fayetteville St., Suite 900, Raleigh, NC 27601
 N.C.B.E.L.S. License Number: F-0116

FOR -L- PROFILE SEE SHEET 28
 FOR -Y11- PROFILE SEE SHEET 40
 FOR -Y12- PROFILE SEE SHEET 40
 FOR INTERSECTION DETAIL SEE SHEET 2B-1
 FOR DITCH DETAILS SEE SHEET 2D-1
 FOR RETAINING WALL 1 SEE SHEET W-1

8/17/99
 7/26/2024
 S:\Projects\2024\EC-30\CONST.07_PSH.F.dgn
 2:44:50 PM



56 x 120 x 3
 2.5 inch Skimmer
 with 2.25 inch
 Orifice Diameter
 21 ft. weir
 ID 7.1 B

NOTE: UTILIZE FABRIC INSERT INLET PROTECTION DEVICES IN LIEU OF ROCK INLET SEDIMENT TRAPS, TYPE C AS DIRECTED BY THE ENGINEER TO AVOID IMPOUNDMENT OF RUNOFF IN ROADWAY OPEN TO TRAFFIC

60 x 15 x 3
 ID 7.2 F



MATCHLINE -L- STA. 46+50.00 SEE SHEET NO. 6

MATCHLINE -L- STA. 60+00.00 SEE SHEET NO. 8

END CONSTRUCTION
 -Y11- POT Sta. 11+25.00

BEGIN CONSTRUCTION
 -Y12- POC Sta. 11+75.00

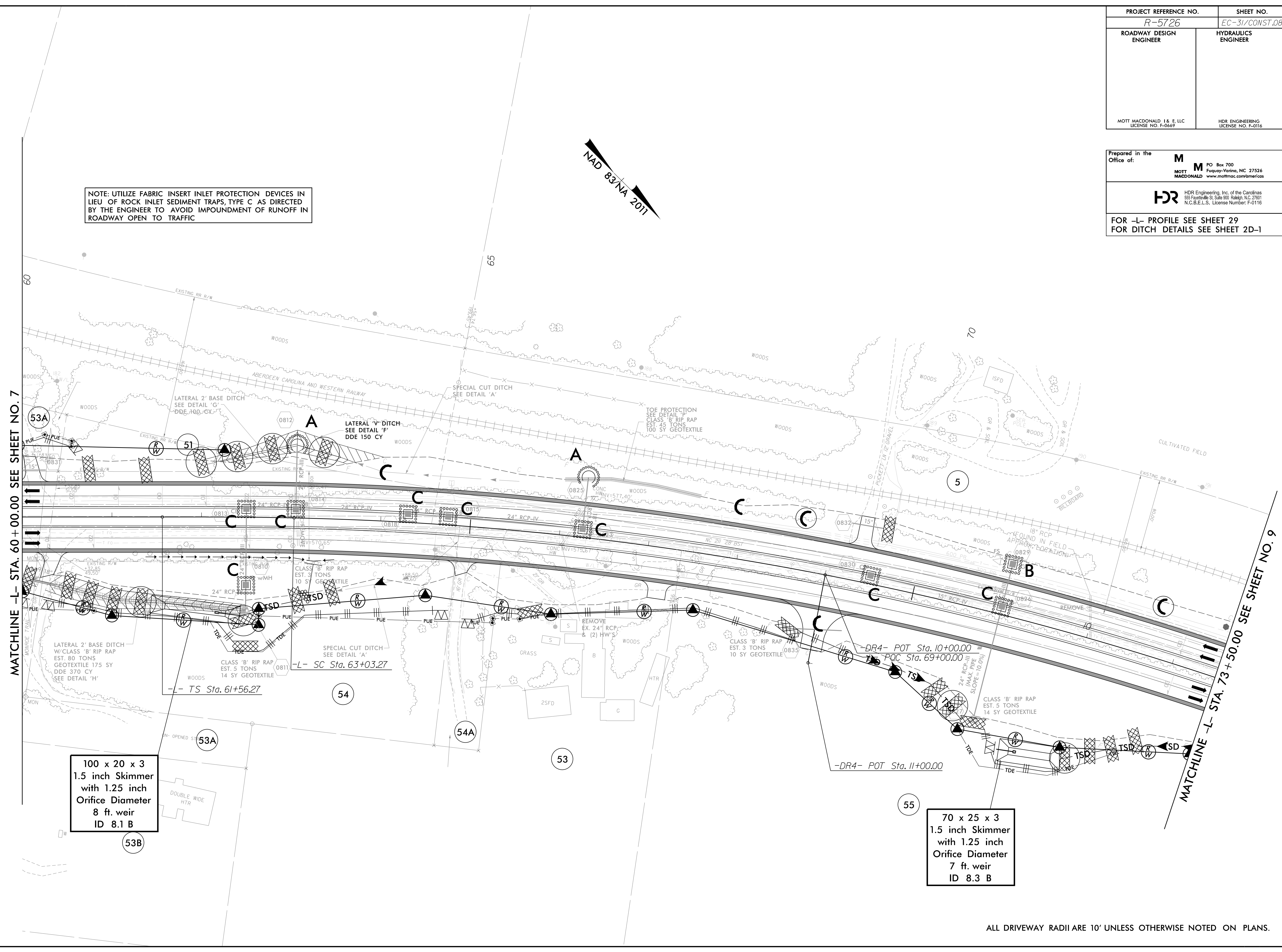
PROJECT REFERENCE NO. <i>R-5726</i>	SHEET NO. <i>EC-31/CONST.08</i>
ROADWAY DESIGN ENGINEER	HYDRAULICS ENGINEER
MOTT MACDONALD I & E, LLC LICENSE NO. F-0669	HDR ENGINEERING LICENSE NO. F-0116

Prepared in the Office of: **M** MOTT MACDONALD
 PO Box 700
 Fuquay-Varina, NC 27526
 www.mottmac.com/americas

HDR HDR Engineering, Inc. of the Carolinas
 555 Fayetteville St., Suite 900, Raleigh, NC 27601
 N.C.B.E.L.S. License Number: F-0116

FOR -L- PROFILE SEE SHEET 29
 FOR DITCH DETAILS SEE SHEET 2D-1

NOTE: UTILIZE FABRIC INSERT INLET PROTECTION DEVICES IN LIEU OF ROCK INLET SEDIMENT TRAPS, TYPE C AS DIRECTED BY THE ENGINEER TO AVOID IMPOUNDMENT OF RUNOFF IN ROADWAY OPEN TO TRAFFIC



MATCHLINE -L- STA. 60+00.00 SEE SHEET NO. 7

MATCHLINE -L- STA. 73+50.00 SEE SHEET NO. 9

100 x 20 x 3
 1.5 inch Skimmer
 with 1.25 inch
 Orifice Diameter
 8 ft. weir
 ID 8.1 B

70 x 25 x 3
 1.5 inch Skimmer
 with 1.25 inch
 Orifice Diameter
 7 ft. weir
 ID 8.3 B

ALL DRIVEWAY RADII ARE 10' UNLESS OTHERWISE NOTED ON PLANS.

8/17/99
 7/2/2024
 R:\5726\EC_PSH.F.dgn
 8:56:10 AM

8/17/99

PROJECT REFERENCE NO. <i>R-5726</i>	SHEET NO. <i>EC-32/CONST.09</i>
ROADWAY DESIGN ENGINEER	HYDRAULICS ENGINEER
MOTT MACDONALD I & E, LLC LICENSE NO. F-0669	HDR ENGINEERING LICENSE NO. F-0116

Prepared in the Office of:

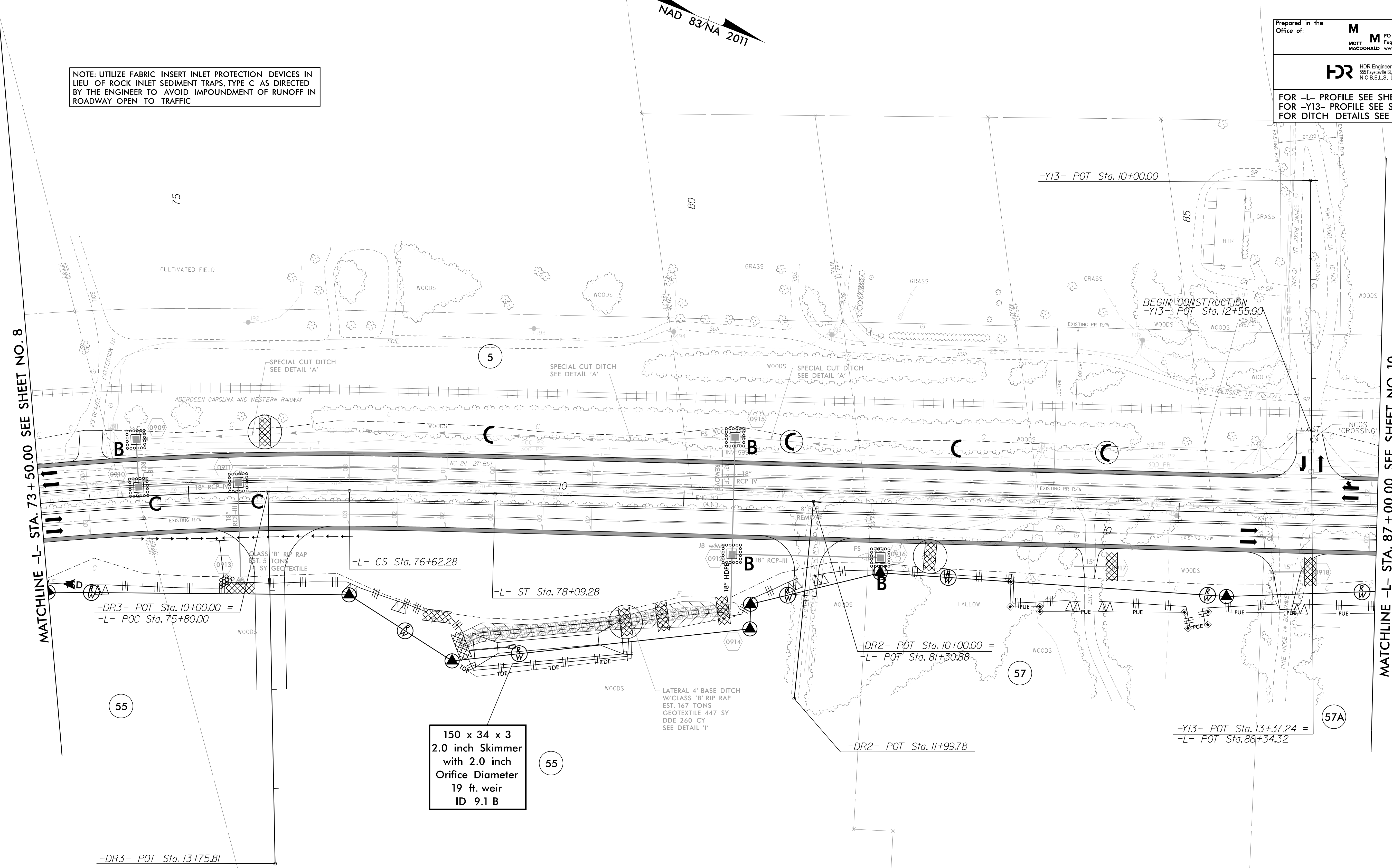
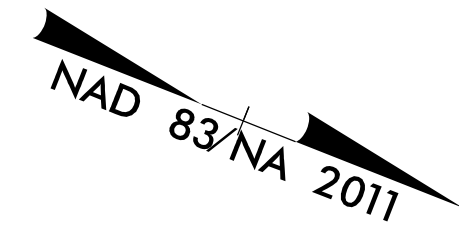
M MOTT MACDONALD
 PO Box 700
 Fuquay-Varina, NC 27526
 www.mottmac.com/americas

HDR HDR Engineering, Inc. of the Carolinas
 555 Fayetteville St., Suite 900, Raleigh, NC 27601
 N.C.B.E.L.S. License Number: F-0116

FOR -L- PROFILE SEE SHEET 29
 FOR -Y13- PROFILE SEE SHEET 40
 FOR DITCH DETAILS SEE SHEET 2D-1

Place Matting for Erosion Control on Slope as Work Allows.
 Sta. 74+75 to Sta. 76+55 RT

NOTE: UTILIZE FABRIC INSERT INLET PROTECTION DEVICES IN LIEU OF ROCK INLET SEDIMENT TRAPS, TYPE C AS DIRECTED BY THE ENGINEER TO AVOID IMPOUNDMENT OF RUNOFF IN ROADWAY OPEN TO TRAFFIC



150 x 34 x 3
 2.0 inch Skimmer
 with 2.0 inch
 Orifice Diameter
 19 ft. weir
 ID 9.1 B

ALL DRIVEWAY RADII ARE 10' UNLESS OTHERWISE NOTED ON PLANS.

7/2/2024
 R:\5726\EC_PSH\F.dgn
 8:56:19 AM

8/17/99

PROJECT REFERENCE NO. <i>R-5726</i>	SHEET NO. <i>EC-33/CONST.10</i>
ROADWAY DESIGN ENGINEER	HYDRAULICS ENGINEER
MOTT MACDONALD I & E, LLC LICENSE NO. F-0669	HDR ENGINEERING LICENSE NO. F-0116

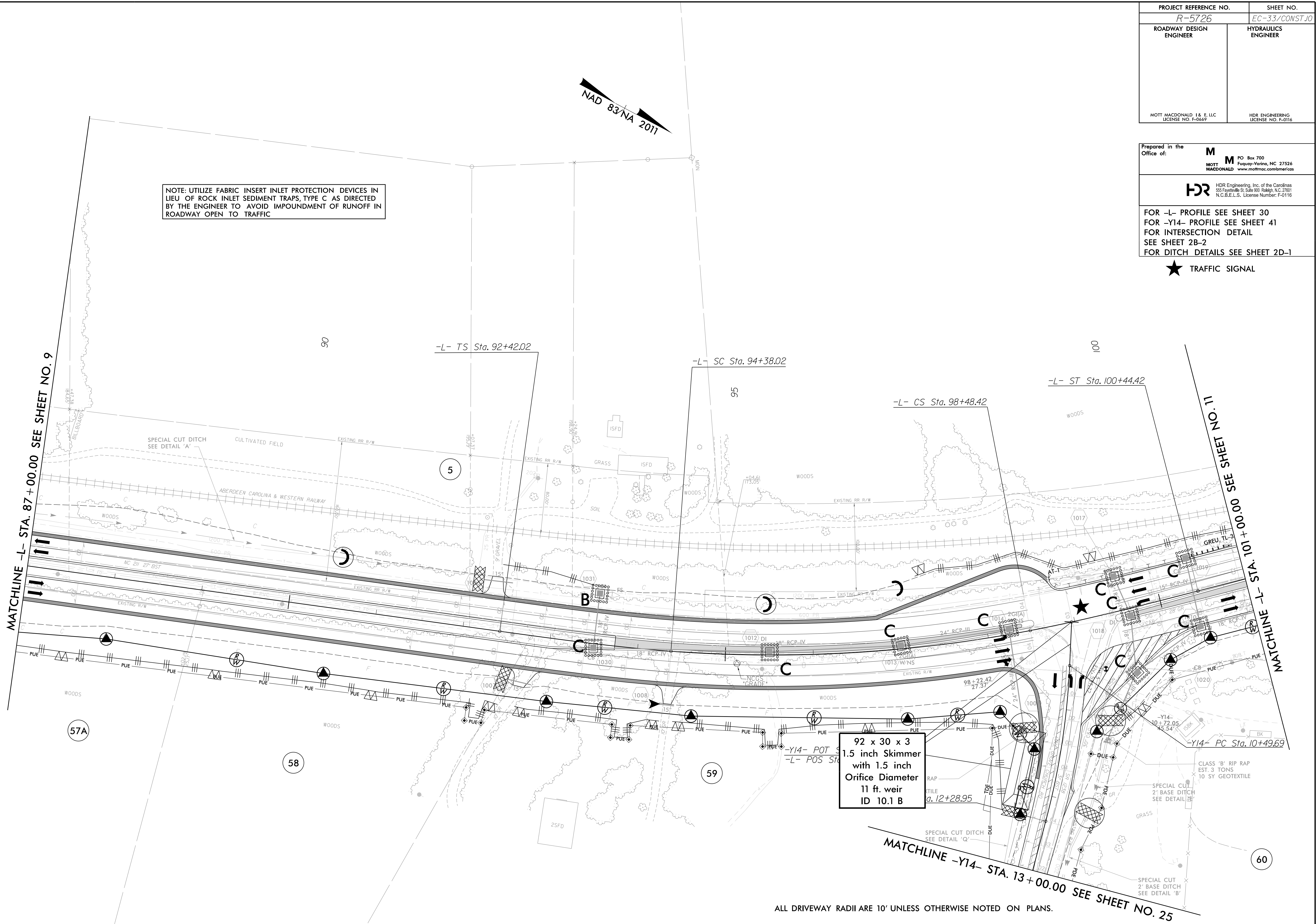
Prepared in the Office of: **M**
 MOTT MACDONALD PO Box 700 Fuquay-Varina, NC 27526
 www.mottmac.com/americas

HDR HDR Engineering, Inc. of the Carolinas
 555 Fayetteville St., Suite 900 Raleigh, NC 27601
 N.C.B.E.L.S. License Number: F-0116

FOR -L- PROFILE SEE SHEET 30
 FOR -Y14- PROFILE SEE SHEET 41
 FOR INTERSECTION DETAIL SEE SHEET 2B-2
 FOR DITCH DETAILS SEE SHEET 2D-1

★ TRAFFIC SIGNAL

NOTE: UTILIZE FABRIC INSERT INLET PROTECTION DEVICES IN LIEU OF ROCK INLET SEDIMENT TRAPS, TYPE C AS DIRECTED BY THE ENGINEER TO AVOID IMPOUNDMENT OF RUNOFF IN ROADWAY OPEN TO TRAFFIC



92 x 30 x 3
 1.5 inch Skimmer
 with 1.5 inch
 Orifice Diameter
 11 ft. weir
 ID 10.1 B

ALL DRIVEWAY RADII ARE 10' UNLESS OTHERWISE NOTED ON PLANS.

7/2/2024
 R-5726-EC-PSH-L-F.dgn
 8:56:26 AM

8/17/99

PROJECT REFERENCE NO. <i>R-5726</i>	SHEET NO. <i>EC-34/CONST.II</i>
ROADWAY DESIGN ENGINEER	HYDRAULICS ENGINEER
MOTT MACDONALD, I & E, LLC LICENSE NO. F-0669	HDR ENGINEERING LICENSE NO. F-0116

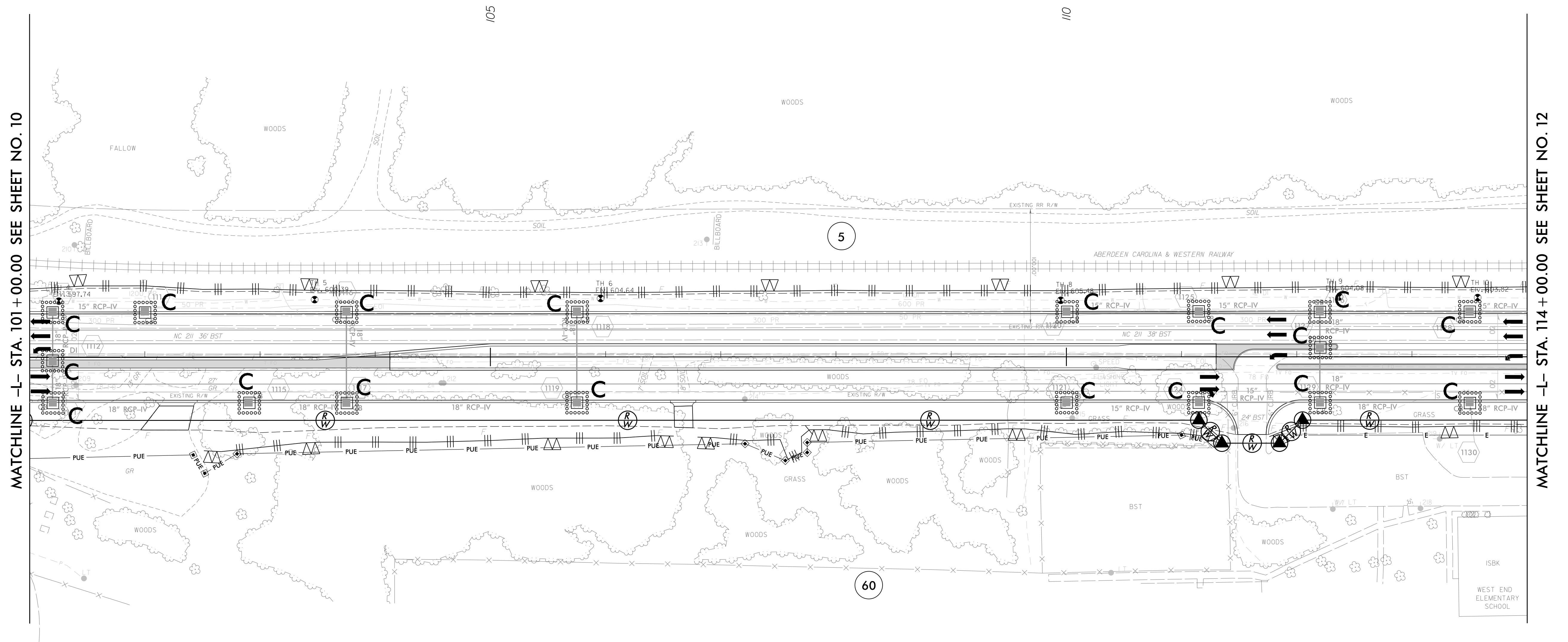


NOTE: UTILIZE FABRIC INSERT INLET PROTECTION DEVICES IN LIEU OF ROCK INLET SEDIMENT TRAPS, TYPE C AS DIRECTED BY THE ENGINEER TO AVOID IMPOUNDMENT OF RUNOFF IN ROADWAY OPEN TO TRAFFIC

Prepared in the Office of: **M**
 MOTT MACDONALD, I & E, LLC
 PO Box 700
 Fuquay-Varina, NC 27526
 www.mottmac.com/americas

HDR HDR Engineering, Inc. of the Carolinas
 555 Fayetteville St., Suite 900, Raleigh, NC 27601
 N.C.B.E.L.S. License Number: F-0116

FOR -L- PROFILE SEE SHEET 30
 FOR INTERSECTION DETAIL
 SEE SHEET 2B-2
 FOR DITCH DETAILS SEE SHEET 2D-1



MATCHLINE -L- STA. 101+00.00 SEE SHEET NO. 10

MATCHLINE -L- STA. 114+00.00 SEE SHEET NO. 12

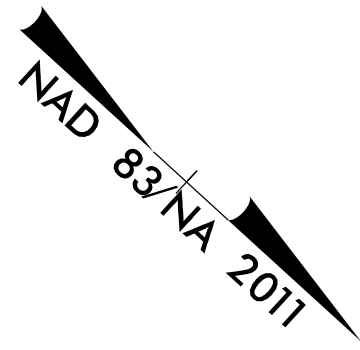
7/2/2024 11:56:56 AM
 R:\S\6726\EC-PSH\F.dgn

ALL DRIVEWAY RADII ARE 10' UNLESS OTHERWISE NOTED ON PLANS.

8/17/99

PROJECT REFERENCE NO. <i>R-5726</i>	SHEET NO. <i>EC-35/CONST.12</i>
ROADWAY DESIGN ENGINEER	HYDRAULICS ENGINEER
MOTT MACDONALD I & E, LLC LICENSE NO. F-0669	HDR ENGINEERING LICENSE NO. F-0116

NOTE: UTILIZE FABRIC INSERT INLET PROTECTION DEVICES IN LIEU OF ROCK INLET SEDIMENT TRAPS, TYPE C AS DIRECTED BY THE ENGINEER TO AVOID IMPOUNDMENT OF RUNOFF IN ROADWAY OPEN TO TRAFFIC



Prepared in the Office of:

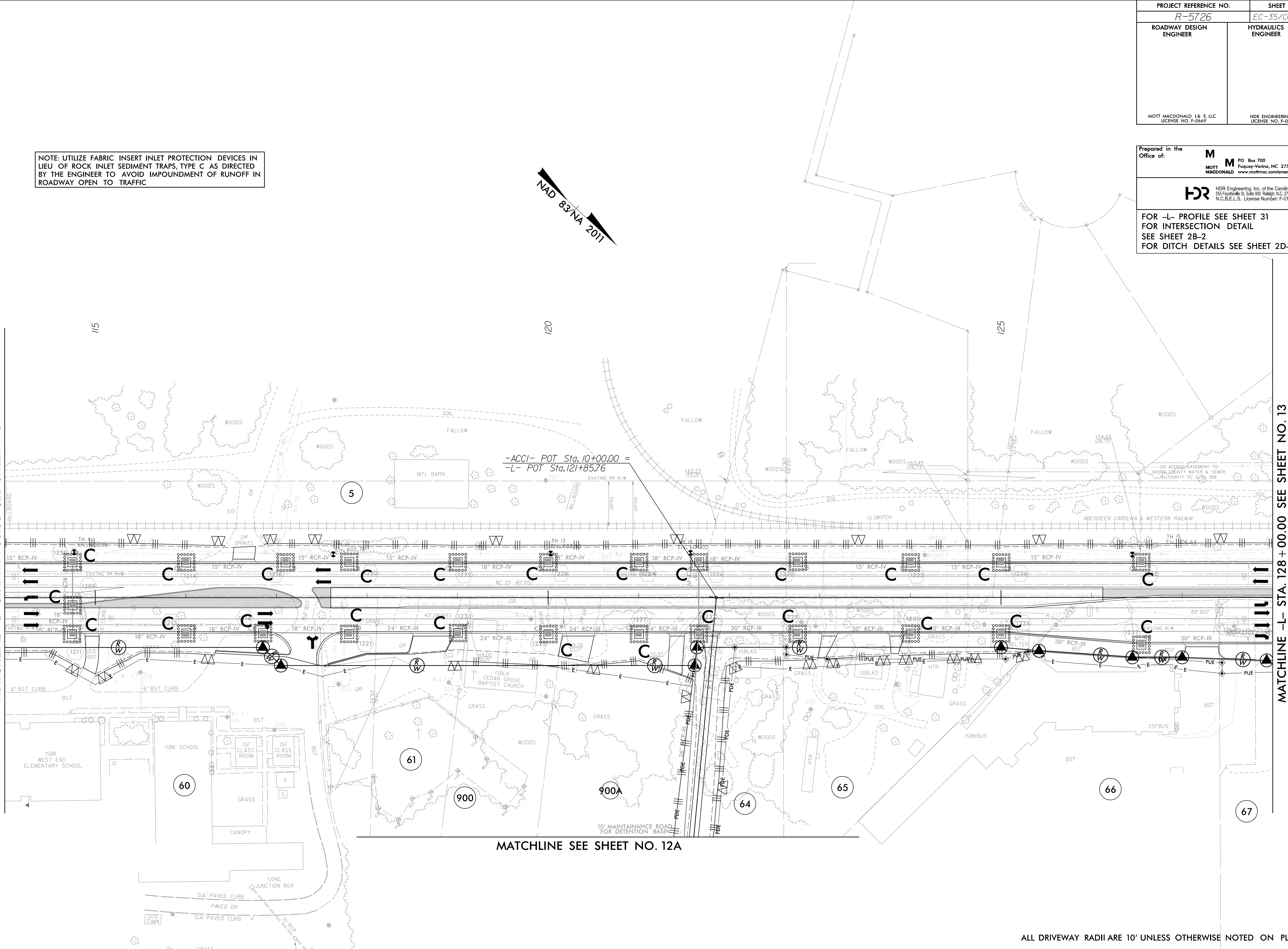
M MOTT MACDONALD PO Box 700 Fuquay-Varina, NC 27526 www.mottmac.com/americas

HDR HDR Engineering, Inc. of the Carolinas 555 Fayetteville St., Suite 900 Raleigh, NC 27601 N.C.B.E.L.S. License Number: F-0116

FOR -L- PROFILE SEE SHEET 31
FOR INTERSECTION DETAIL SEE SHEET 2B-2
FOR DITCH DETAILS SEE SHEET 2D-1

MATCHLINE -L- STA. 114 + 00.00 SEE SHEET NO. 11

MATCHLINE -L- STA. 128 + 00.00 SEE SHEET NO. 13



MATCHLINE SEE SHEET NO. 12A

7/2/2024 11:57:26 EC_PSH.F.dgn

ALL DRIVEWAY RADII ARE 10' UNLESS OTHERWISE NOTED ON PLANS.

8/17/99

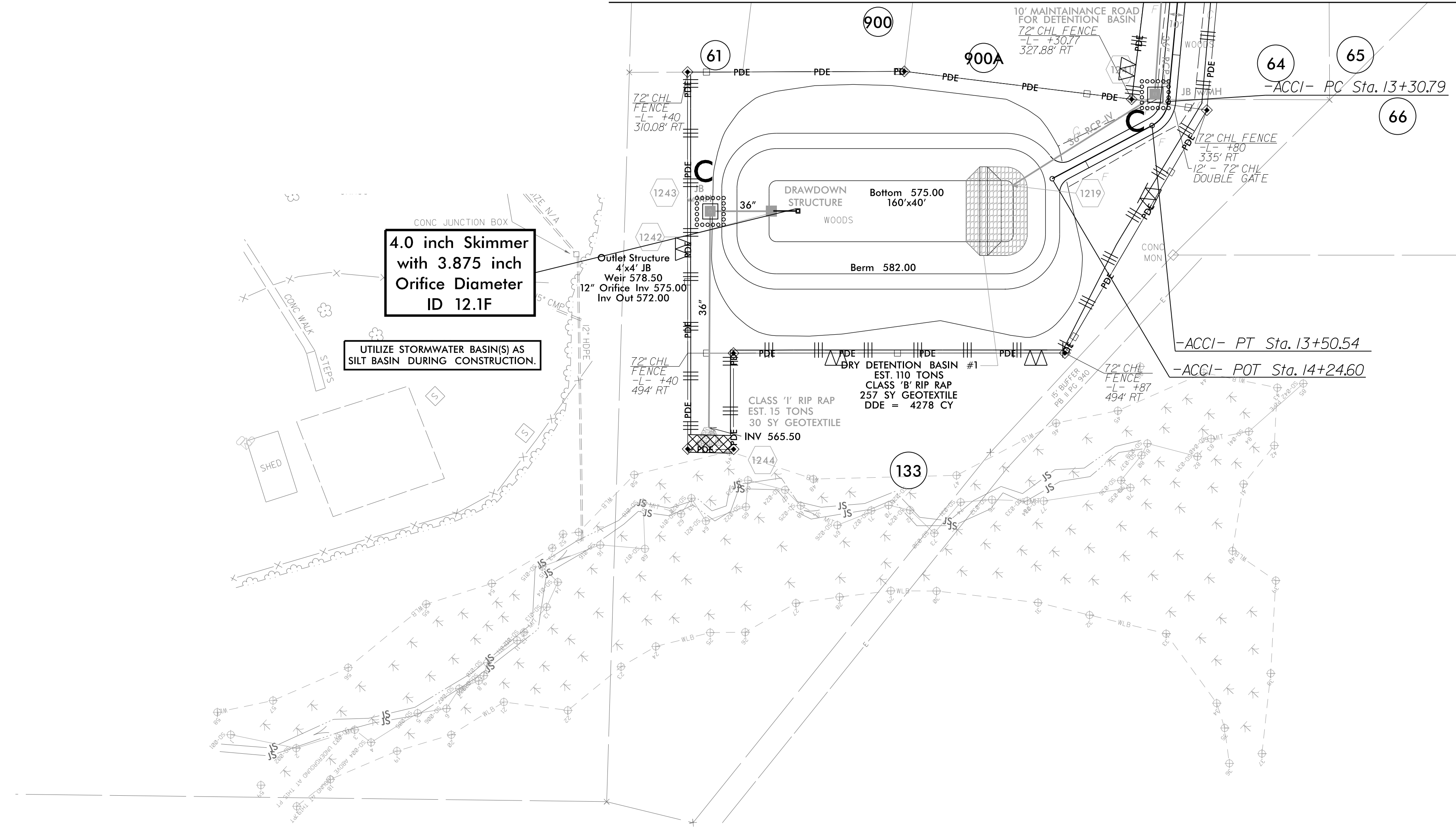
PROJECT REFERENCE NO. <i>R-5726</i>	SHEET NO. <i>EC-35A/CONST J2A</i>
ROADWAY DESIGN ENGINEER	HYDRAULICS ENGINEER
MOTT MACDONALD I & E, LLC LICENSE NO. F-0669	HDR ENGINEERING LICENSE NO. F-0116

Prepared in the Office of: **M** PO Box 700 Fuquay-Varina, NC 27526
MOTT MACDONALD www.mottmac.com/americas

HDR HDR Engineering, Inc. of the Carolinas
555 Fayetteville St., Suite 900, Raleigh, NC 27601
N.C.B.E.L.S. License Number: F-0116

FOR DITCH DETAILS SEE SHEET 2D-1
FOR DRY DETENTION BASIN DETAILS SEE SHEET 2D-2 & 2D-3

MATCHLINE SEE SHEET NO. 12



7/2/2024 11:56:57 AM EC_PSH.F.dgn

ALL DRIVEWAY RADII ARE 10' UNLESS OTHERWISE NOTED ON PLANS.

8/17/99

PROJECT REFERENCE NO. <i>R-5726</i>	SHEET NO. <i>EC-36/CONST.3</i>
ROADWAY DESIGN ENGINEER	HYDRAULICS ENGINEER
MOTT MACDONALD I & E, LLC LICENSE NO. F-0669	HDR ENGINEERING LICENSE NO. F-0116

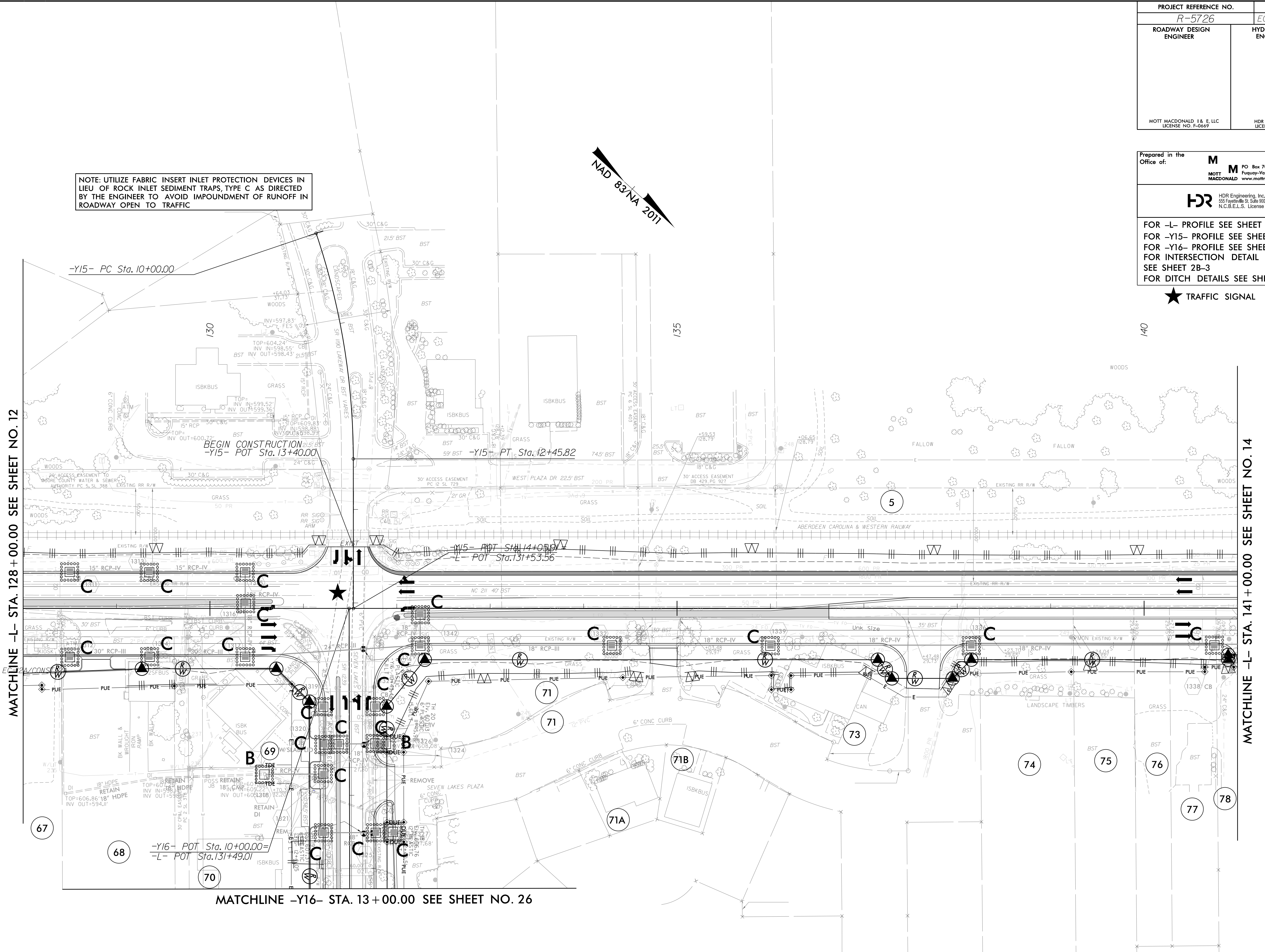
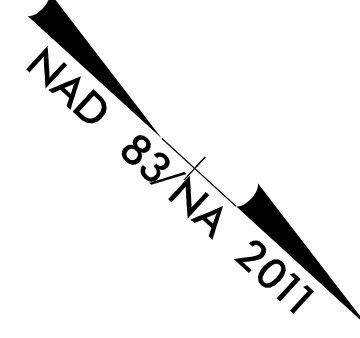
Prepared in the Office of: **M** MOTT MACDONALD
 PO Box 700
 Fuquay-Varina, NC 27526
 www.mottmac.com/americas

HDR HDR Engineering, Inc. of the Carolinas
 555 Fayetteville St., Suite 900, Raleigh, NC 27601
 N.C.B.E.L.S. License Number: F-0116

FOR -L- PROFILE SEE SHEET 31
 FOR -Y15- PROFILE SEE SHEET 41
 FOR -Y16- PROFILE SEE SHEET 41
 FOR INTERSECTION DETAIL SEE SHEET 2B-3
 FOR DITCH DETAILS SEE SHEET 2D-1

★ TRAFFIC SIGNAL

NOTE: UTILIZE FABRIC INSERT INLET PROTECTION DEVICES IN LIEU OF ROCK INLET SEDIMENT TRAPS, TYPE C AS DIRECTED BY THE ENGINEER TO AVOID IMPOUNDMENT OF RUNOFF IN ROADWAY OPEN TO TRAFFIC



7/2/2024
 R:\Projects\2024\EC-36\EC-PSH-L.dgn
 8:56:08 AM

ALL DRIVEWAY RADII ARE 10' UNLESS OTHERWISE NOTED ON PLANS.

PROJECT REFERENCE NO. <i>R-5726</i>	SHEET NO. <i>EC-37/CONST.14</i>
ROADWAY DESIGN ENGINEER	HYDRAULICS ENGINEER
MOTT MACDONALD I & E, LLC LICENSE NO. F-06697	HDR ENGINEERING LICENSE NO. F-0116

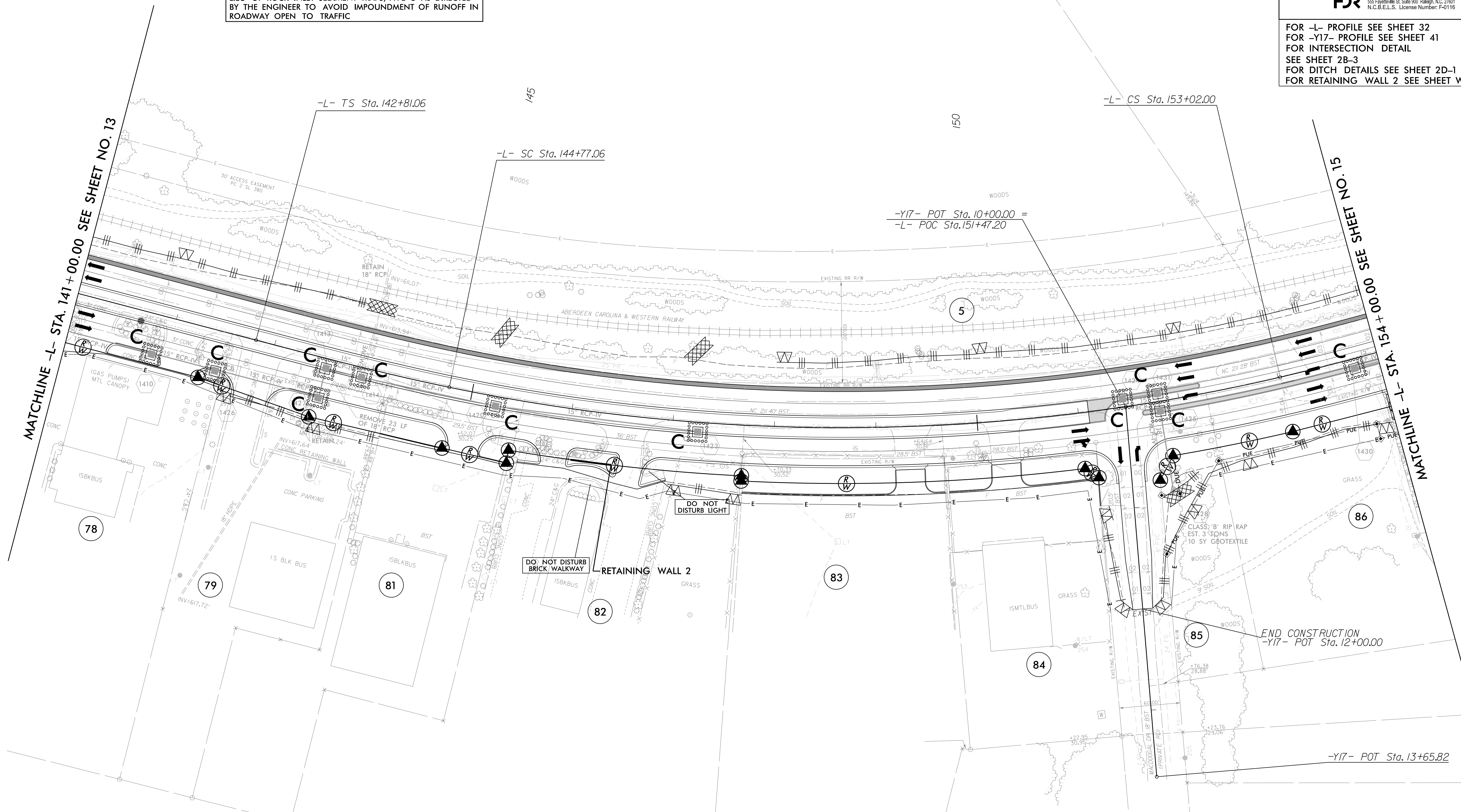
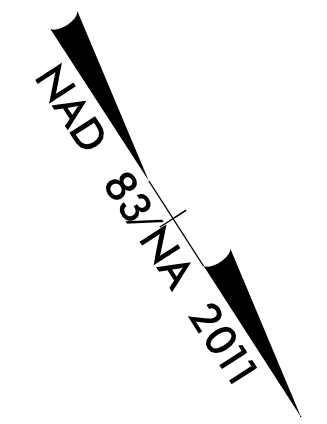
Prepared in the Office of: **M** MOTT MACDONALD
 PO Box 700
 Fuquay-Varina, NC 27526
 www.mottmac.com/americas

HDR HDR Engineering, Inc. of the Carolinas
 555 Fayetteville St., Suite 900, Raleigh, NC 27601
 N.C.B.E.L.S. License Number: F-0116

FOR -L- PROFILE SEE SHEET 32
 FOR -Y17- PROFILE SEE SHEET 41
 FOR INTERSECTION DETAIL SEE SHEET 2B-3
 FOR DITCH DETAILS SEE SHEET 2D-1
 FOR RETAINING WALL 2 SEE SHEET W-2

Place Matting for Erosion Control on Slope as Work Allows.
 Sta. 142+00 to Sta. 145+85 LT
 Sta. 151+55 to Sta. 152+50 RT

NOTE: UTILIZE FABRIC INSERT INLET PROTECTION DEVICES IN LIEU OF ROCK INLET SEDIMENT TRAPS, TYPE C AS DIRECTED BY THE ENGINEER TO AVOID IMPOUNDMENT OF RUNOFF IN ROADWAY OPEN TO TRAFFIC



MATCHLINE -L- STA. 141+00.00 SEE SHEET NO. 13

MATCHLINE -L- STA. 154+00.00 SEE SHEET NO. 15

END CONSTRUCTION
 -Y17- POT Sta. 12+00.00

-Y17- POT Sta. 13+65.82

ALL DRIVEWAY RADII ARE 10' UNLESS OTHERWISE NOTED ON PLANS.

8/17/99
 7/2/2024
 R:\156775\EC_PSH.F.dgn
 156775-14

8/17/99

PROJECT REFERENCE NO. <i>R-5726</i>	SHEET NO. <i>EC-38/CONST.15</i>
ROADWAY DESIGN ENGINEER	HYDRAULICS ENGINEER
MOTT MACDONALD I & E, LLC LICENSE NO. F-0669	HDR ENGINEERING LICENSE NO. F-0116

Place Matting for Erosion Control
on Slope as Work Allows.
Sta. 161+75 to Sta. 167+00 RT

NOTE: UTILIZE FABRIC INSERT INLET PROTECTION DEVICES IN LIEU OF ROCK INLET SEDIMENT TRAPS, TYPE C AS DIRECTED BY THE ENGINEER TO AVOID IMPOUNDMENT OF RUNOFF IN ROADWAY OPEN TO TRAFFIC

66 x 20 x 3
1.5 inch Skimmer
with 1.0 inch
Orifice Diameter
5 ft. weir
ID 15.2 F

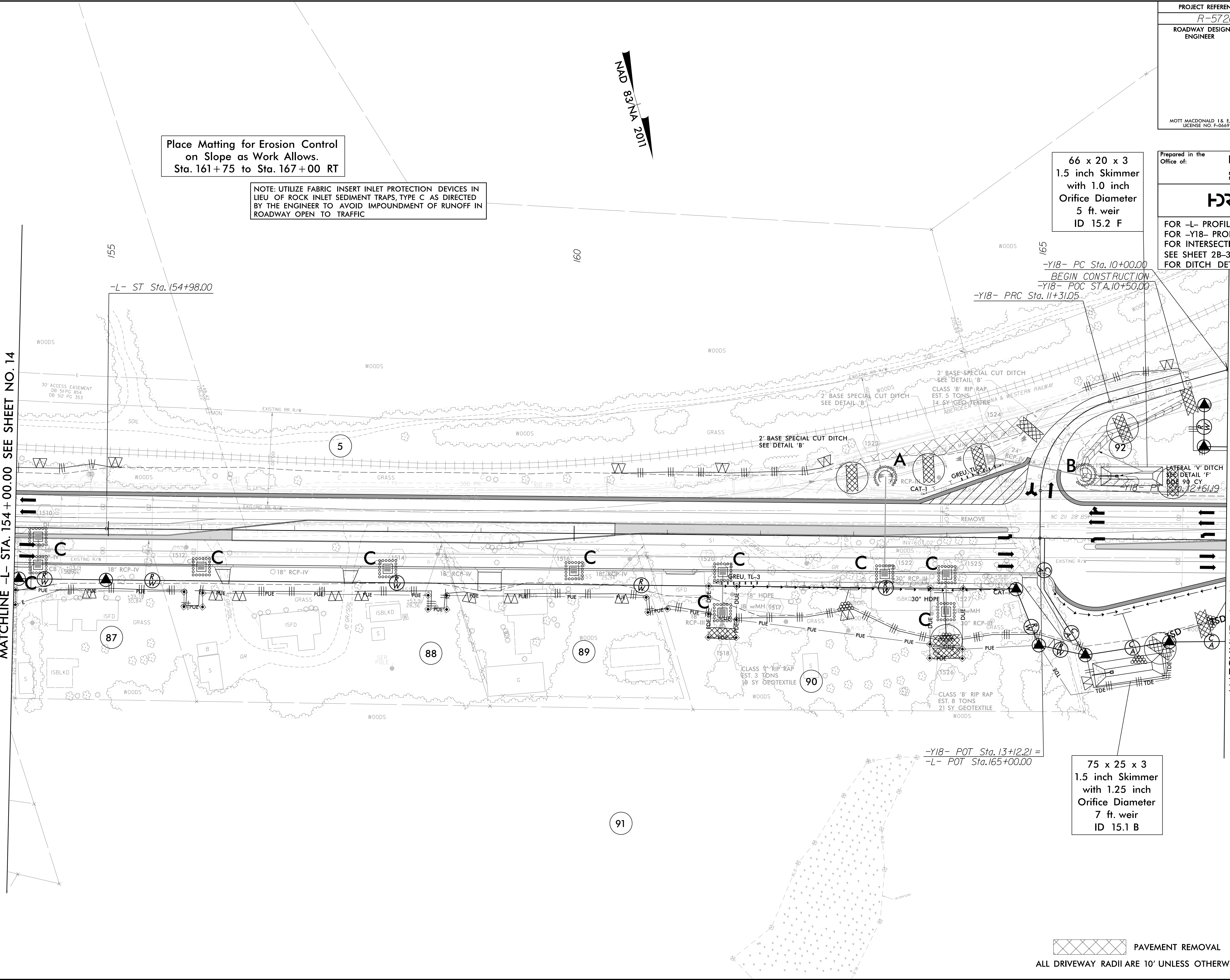
Prepared in the Office of:
M MOTT MACDONALD
PO Box 700
Fuquay-Varina, NC 27526
www.mottmac.com/americas

HDR HDR Engineering, Inc. of the Carolinas
555 Fayetteville St., Suite 900, Raleigh, NC 27601
N.C.B.E.L.S. License Number: F-0116

FOR -L- PROFILE SEE SHEET 32
FOR -Y18- PROFILE SEE SHEET 42
FOR INTERSECTION DETAIL
SEE SHEET 2B-3
FOR DITCH DETAILS SEE SHEET 2D-1

MATCHLINE -L- STA. 154+00.00 SEE SHEET NO. 14

MATCHLINE -L- STA. 167+00.00 SEE SHEET NO. 16



75 x 25 x 3
1.5 inch Skimmer
with 1.25 inch
Orifice Diameter
7 ft. weir
ID 15.1 B

PAVEMENT REMOVAL
ALL DRIVEWAY RADII ARE 10' UNLESS OTHERWISE NOTED ON PLANS.

7/2/2024
R-5726-EC-PSH-L-F.dgn
8:27:15 AM

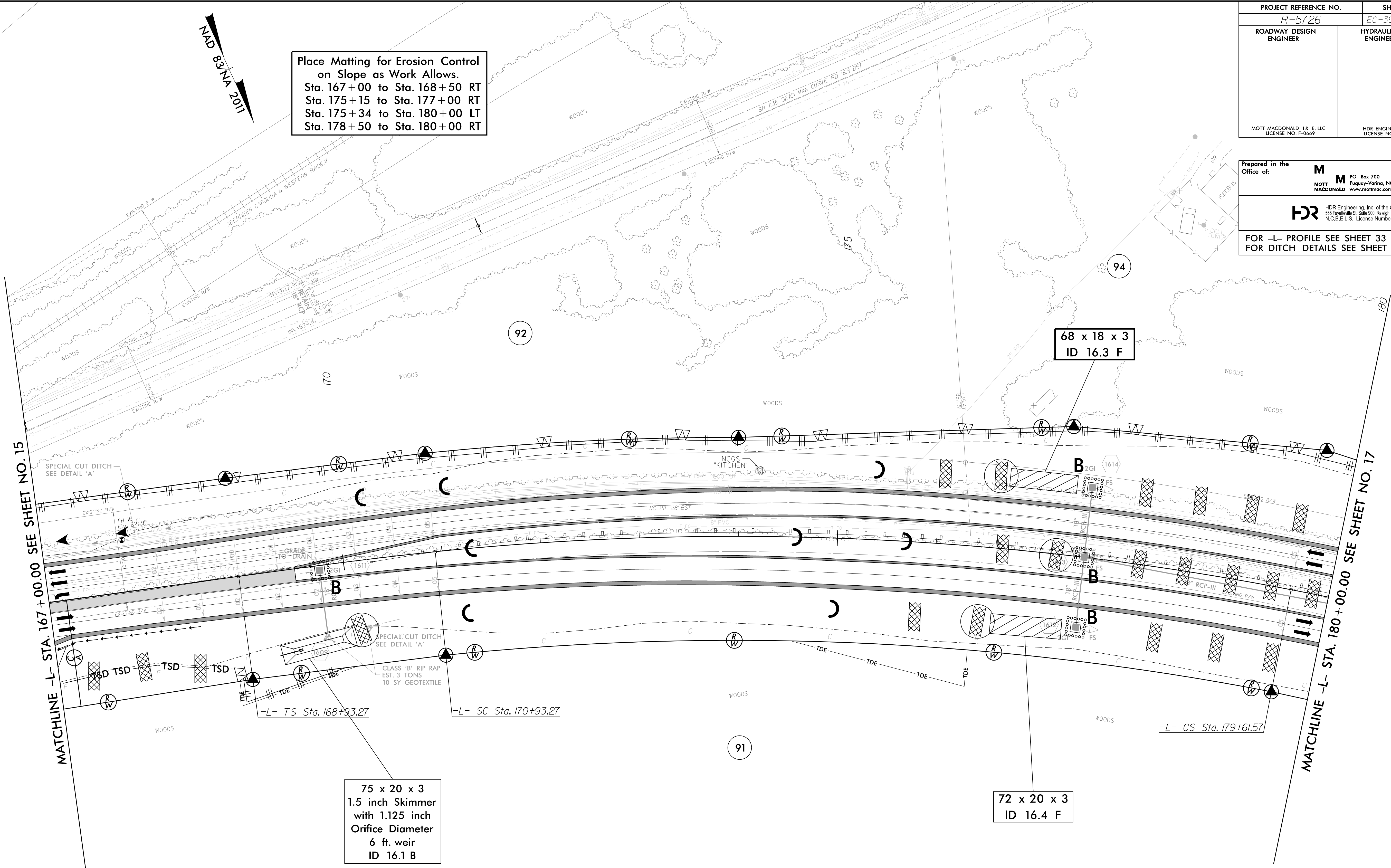
8/17/99

PROJECT REFERENCE NO. R-5726	SHEET NO. EC-39/CONST.16
ROADWAY DESIGN ENGINEER	HYDRAULICS ENGINEER
MOTT MACDONALD I & E, LLC LICENSE NO. F-0669	HDR ENGINEERING LICENSE NO. F-0116

Prepared in the Office of:	M PO Box 700 Fuquay-Varina, NC 27526 MOTT MACDONALD www.mottmac.com/america
	HDR HDR Engineering, Inc. of the Carolinas 555 Fayetteville St., Suite 900, Raleigh, NC 27601 N.C.B.E.L.S. License Number: F-0116
FOR -L- PROFILE SEE SHEET 33 FOR DITCH DETAILS SEE SHEET 2D-1	

Place Matting for Erosion Control
on Slope as Work Allows.
Sta. 167+00 to Sta. 168+50 RT
Sta. 175+15 to Sta. 177+00 RT
Sta. 175+34 to Sta. 180+00 LT
Sta. 178+50 to Sta. 180+00 RT

MAD 83°VA 2011



7/2/2024
R:\5726\EC-PSH.F.dgn
8:47:22 AM

PROJECT REFERENCE NO. <i>R-5726</i>	SHEET NO. <i>EC-40/CONST.17</i>
ROADWAY DESIGN ENGINEER	HYDRAULICS ENGINEER
MOTT MACDONALD I & E, LLC LICENSE NO. F-0669	HDR ENGINEERING LICENSE NO. F-0116

Prepared in the Office of:

M MOTT MACDONALD
 PO Box 700
 Fuquay-Varina, NC 27526
 www.mottmac.com/meritas

HDR HDR Engineering, Inc. of the Carolinas
 555 Fayetteville St., Suite 900, Raleigh, NC 27601
 N.C.B.E.L.S., License Number: F-0116

FOR -L- PROFILE SEE SHEET 33
 FOR DITCH DETAILS SEE SHEET 2D-1

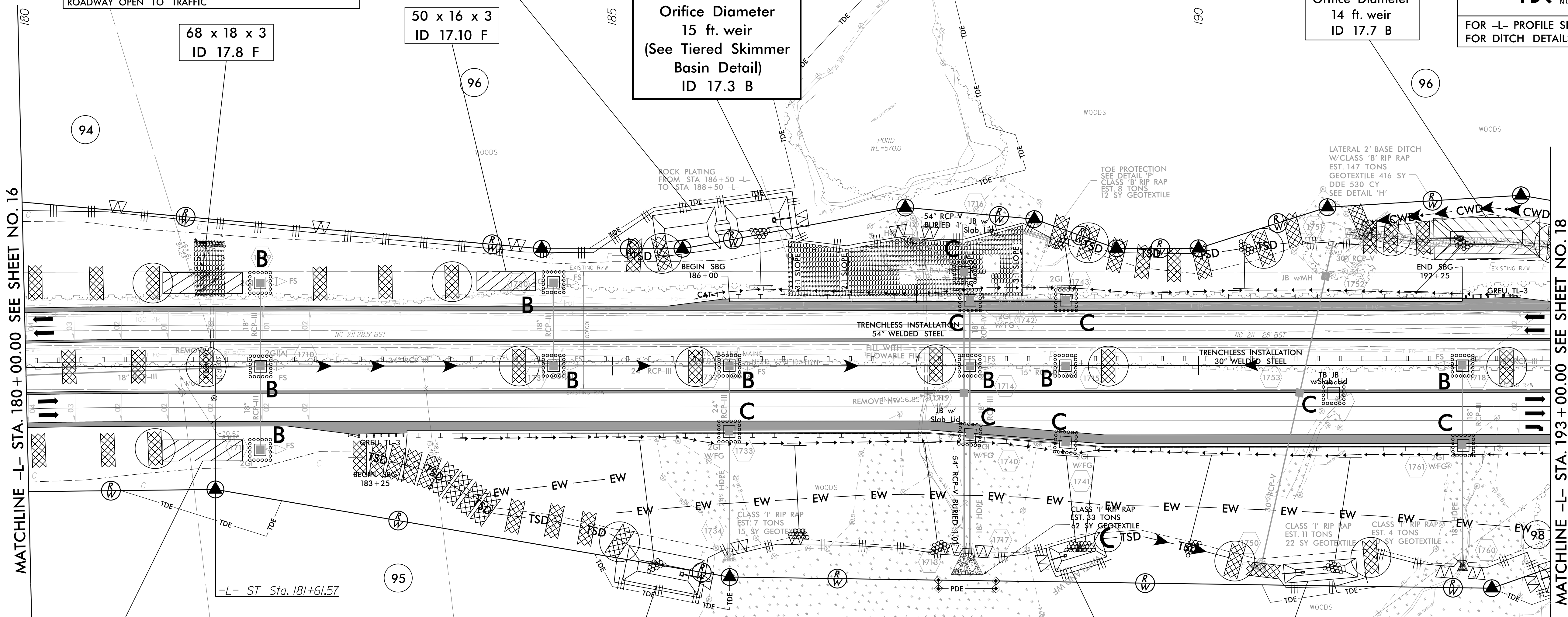
Place Matting for Erosion Control on Slope as Work Allows.
 Sta. 180+00 to Sta. 183+85 LT
 Sta. 180+00 to Sta. 180+50 RT
 Sta. 183+50 to Sta. 193+00 RT
 Sta. 185+70 to Sta. 189+35 LT
 Sta. 190+40 to Sta. 192+75 LT

NOTE: UTILIZE FABRIC INSERT INLET PROTECTION DEVICES IN LIEU OF ROCK INLET SEDIMENT TRAPS, TYPE C AS DIRECTED BY THE ENGINEER TO AVOID IMPOUNDMENT OF RUNOFF IN ROADWAY OPEN TO TRAFFIC

Modified Silt Basin
 Type 'B'
 58 x 36 x 3
 15 ft. weir
 (See Tiered Skimmer Basin Detail)
 ID 17.3 B

58 x 36 x 3
 2.0 inch Skimmer
 with 1.625 inch Orifice Diameter
 15 ft. weir
 (See Tiered Skimmer Basin Detail)
 ID 17.3 B

95 x 36 x 3
 2.0 inch Skimmer
 with 1.625 inch Orifice Diameter
 14 ft. weir
 ID 17.7 B



MATCHLINE -L- STA. 180+00.00 SEE SHEET NO. 16

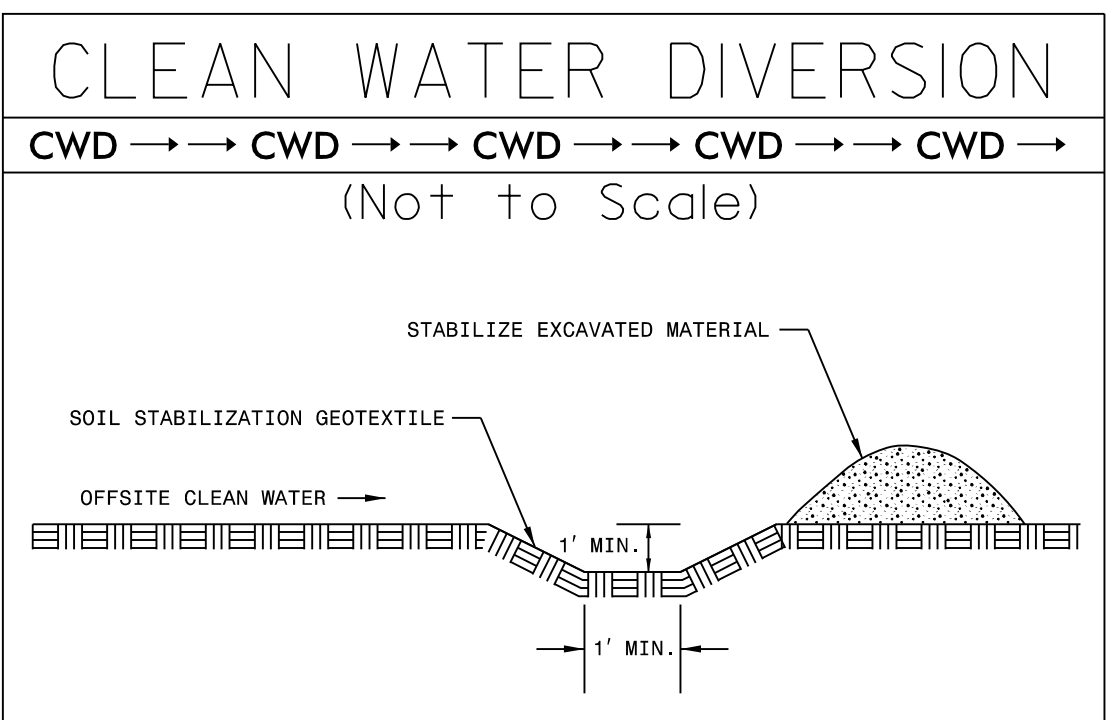
MATCHLINE -L- STA. 193+00.00 SEE SHEET NO. 18

68 x 18 x 3
 ID 17.9 F

65 x 30 x 3
 1.5 inch Skimmer
 with 1.25 inch Orifice Diameter
 7 ft. weir
 ID 17.2 B

45 x 22 x 3
 1.5 inch Skimmer
 with 0.875 inch Orifice Diameter
 4 ft. weir
 ID 17.5 B

60 x 15 x 3
 1.5 inch Skimmer
 with 0.75 inch Orifice Diameter
 4 ft. weir
 ID 17.6 B



ALL DRIVEWAY RADII ARE 10' UNLESS OTHERWISE NOTED ON PLANS.

8/17/99
 7/2/2024
 R:\5726\EC_PSH.F.dgn
 8:57:33 AM

8/17/99

PROJECT REFERENCE NO. R-5726	SHEET NO. EC-41/CONST J8
ROADWAY DESIGN ENGINEER	HYDRAULICS ENGINEER
MOTT MACDONALD I & E, LLC LICENSE NO. F-0669	HDR ENGINEERING LICENSE NO. F-0116

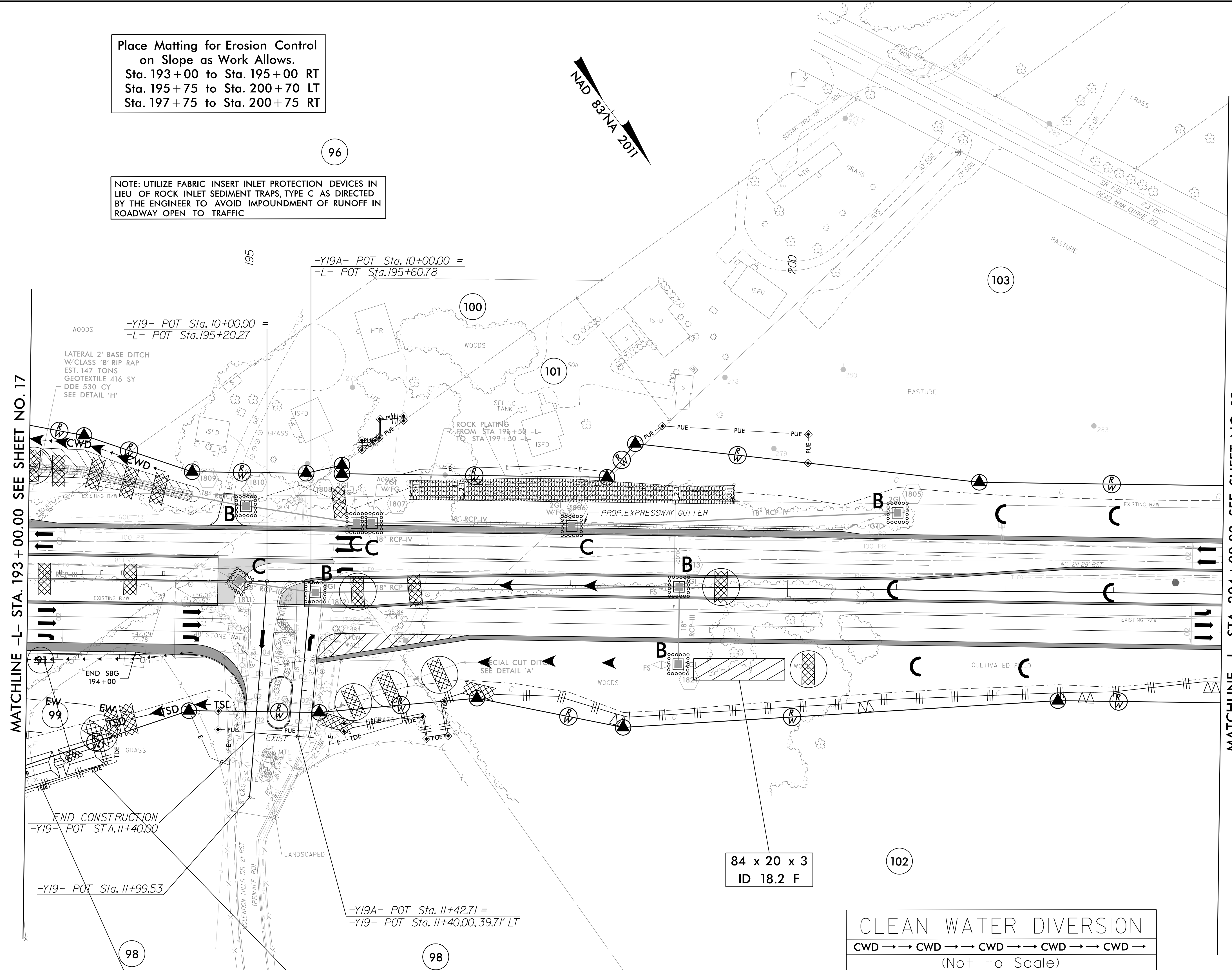
Prepared in the Office of:
M MOTT MACDONALD
 PO Box 700
 Fuquay-Varina, NC 27526
 www.mottmac.com/americas

HDR HDR Engineering, Inc. of the Carolinas
 555 Fayetteville St., Suite 900, Raleigh, NC 27601
 N.C.B.E.L.S. License Number: F-0116

FOR -L- PROFILE SEE SHEET 34
 FOR -Y19- PROFILE SEE SHEET 42
 FOR -Y19A- PROFILE SEE SHEET 42
 FOR INTERSECTION DETAIL SEE SHEET 2B-3
 FOR DITCH DETAILS SEE SHEET 2D-1

Place Matting for Erosion Control on Slope as Work Allows.
 Sta. 193+00 to Sta. 195+00 RT
 Sta. 195+75 to Sta. 200+70 LT
 Sta. 197+75 to Sta. 200+75 RT

NOTE: UTILIZE FABRIC INSERT INLET PROTECTION DEVICES IN LIEU OF ROCK INLET SEDIMENT TRAPS, TYPE C AS DIRECTED BY THE ENGINEER TO AVOID IMPOUNDMENT OF RUNOFF IN ROADWAY OPEN TO TRAFFIC



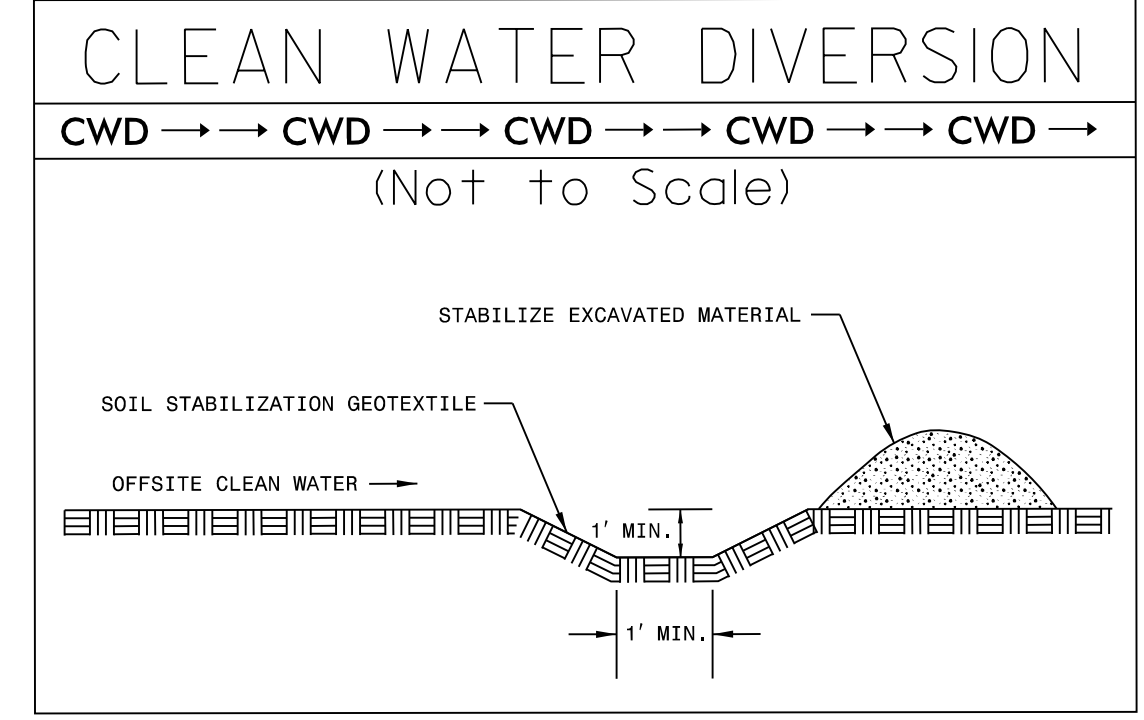
MATCHLINE -L- STA. 193+00.00 SEE SHEET NO. 17

MATCHLINE -L- STA. 204+00.00 SEE SHEET NO. 19

40 x 25 x 3
 1.5 inch Skimmer
 with 1.125 inch
 Orifice Diameter
 8 ft. weir
 (See Tiered Skimmer
 Basin Detail)
 ID 18.1 B

Modified Silt Basin
 Type 'B'
 40 x 25 x 3
 8 ft. weir
 (See Tiered Skimmer
 Basin Detail)
 ID 18.1 B

84 x 20 x 3
 ID 18.2 F



ALL DRIVEWAY RADII ARE 10' UNLESS OTHERWISE NOTED ON PLANS.

7/2/2024
 R:\5726\EC_PSH\F.dgn
 8:57:39 AM