

8/17/99

CLEARING AND GRUBBING
EROSION CONTROL FOR
CONSTRUCTION SHEET 12

NOTE:
PLACE TEMPORARY ROCK SEDIMENT DAMS TYPE - B
AND TEMPORARY ROCK SILT CHECKS TYPE - A AT
DRAINAGE OUTLETS.

SOME CLEARING WORK SHOWN ON
THESE PLANS WAS PERFORMED UNDER
THE R-5726A PROJECT

PROJECT REFERENCE NO. <i>R-5726</i>	SHEET NO. <i>EC-12/CONST J2</i>
ROADWAY DESIGN ENGINEER	HYDRAULICS ENGINEER
MOTT MACDONALD, I & E, LLC LICENSE NO. F-0669	HDR ENGINEERING LICENSE NO. F-0116

Prepared in the Office of:

M MOTT MACDONALD
 PO Box 700
 Fuquay-Varina, NC 27526
 www.mottmac.com/americas

HDR HDR Engineering, Inc. of the Carolinas
 555 Fayetteville St., Suite 900, Raleigh, NC 27601
 N.C.B.E.L.S. License Number: F-0116

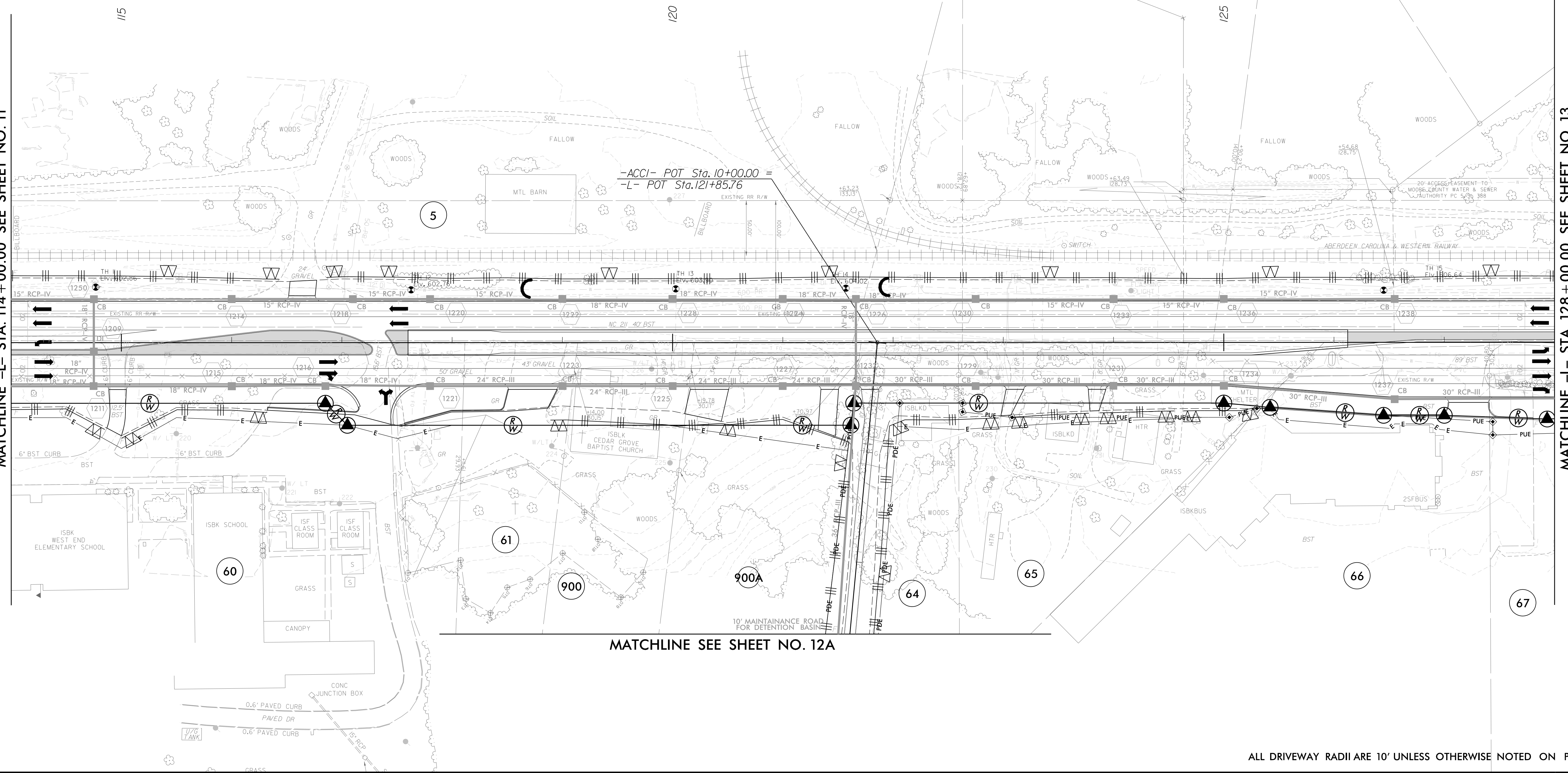
FOR -L- PROFILE SEE SHEET 31
 FOR INTERSECTION DETAIL
 SEE SHEET 2B-2
 FOR DITCH DETAILS SEE SHEET 2D-1



MATCHLINE -L- STA. 114 + 00.00 SEE SHEET NO. 11

MATCHLINE -L- STA. 128 + 00.00 SEE SHEET NO. 13

-ACCI- POT Sta. 10+00.00 =
 -L- POT Sta. 121+85.76



MATCHLINE SEE SHEET NO. 12A

ALL DRIVEWAY RADII ARE 10' UNLESS OTHERWISE NOTED ON PLANS.

7/2/2024
 R-5726_EC_PSH_LCG.dgn
 8:54:16 AM

PROJECT REFERENCE NO. <i>R-5726</i>	SHEET NO. <i>EC-13/CONST J3</i>
ROADWAY DESIGN ENGINEER	HYDRAULICS ENGINEER
MOTT MACDONALD I & E, LLC LICENSE NO. F-0669	HDR ENGINEERING LICENSE NO. F-0116

Prepared in the Office of:
M MOTT MACDONALD
 PO Box 700
 Fuquay-Varina, NC 27526
 www.mottmac.com/americas

HDR HDR Engineering, Inc. of the Carolinas
 555 Fayetteville St., Suite 900, Raleigh, NC 27601
 N.C.B.E.L.S. License Number: F-0116

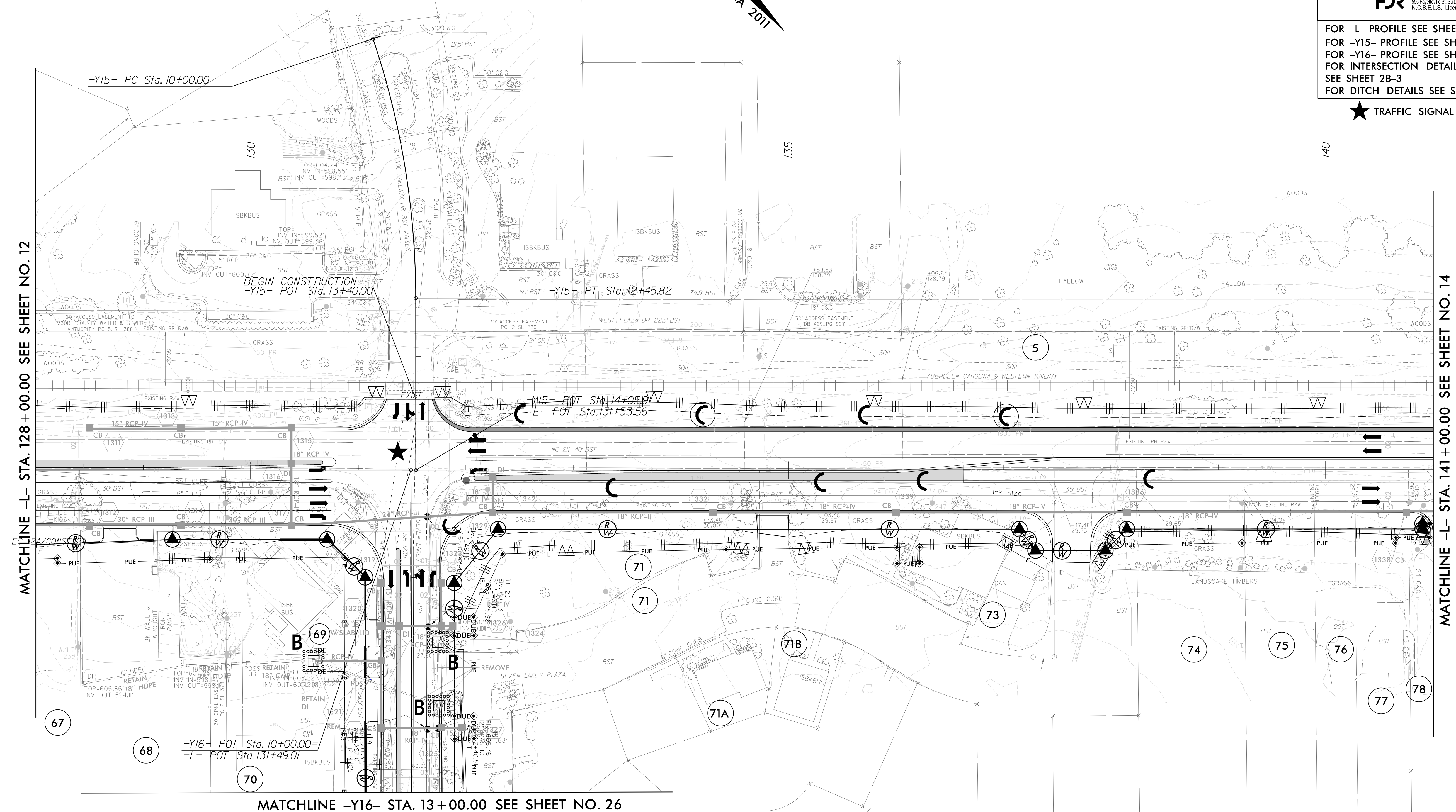
FOR -L- PROFILE SEE SHEET 31
 FOR -Y15- PROFILE SEE SHEET 41
 FOR INTERSECTION DETAIL SEE SHEET 2B-3
 FOR DITCH DETAILS SEE SHEET 2D-1

★ TRAFFIC SIGNAL

CLEARING AND GRUBBING
 EROSION CONTROL FOR
 CONSTRUCTION SHEET 13

NOTE:
 PLACE TEMPORARY ROCK SEDIMENT DAMS TYPE - B
 AND TEMPORARY ROCK SILT CHECKS TYPE - A AT
 DRAINAGE OUTLETS.

SOME CLEARING WORK SHOWN ON
 THESE PLANS WAS PERFORMED UNDER
 THE R-5726A PROJECT



ALL DRIVEWAY RADII ARE 10' UNLESS OTHERWISE NOTED ON PLANS.

8/17/99
 7/2/2024
 R:\5726\EC_PSH+CG.dgn
 8:44:25 AM

PROJECT REFERENCE NO. <i>R-5726</i>	SHEET NO. <i>EC-14/CONST J4</i>
ROADWAY DESIGN ENGINEER	HYDRAULICS ENGINEER
MOTT MACDONALD I & E, LLC LICENSE NO. F-0669	HDR ENGINEERING LICENSE NO. F-0116

Prepared in the Office of: **M** MOTT MACDONALD
 PO Box 700
 Fuquay-Varina, NC 27526
 www.mottmac.com/americas

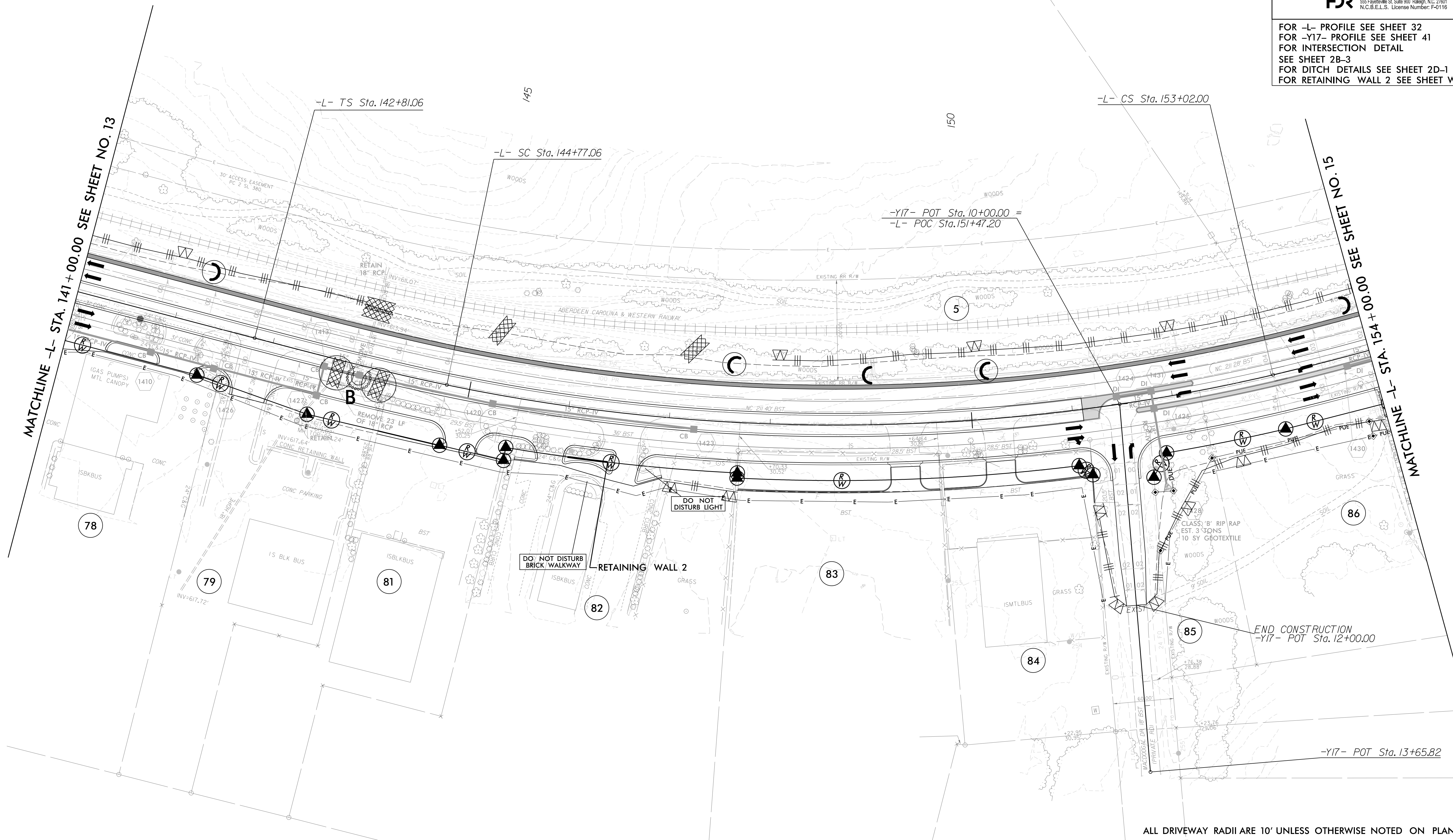
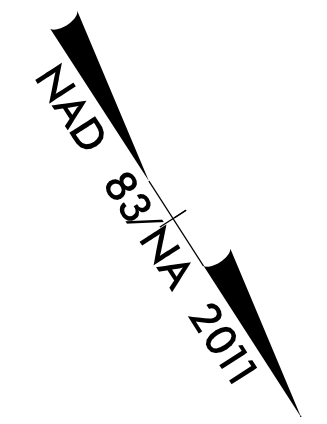
HDR HDR Engineering, Inc. of the Carolinas
 555 Fayetteville St., Suite 900, Raleigh, NC 27601
 N.C.B.E.L.S. License Number: F-0116

FOR -L- PROFILE SEE SHEET 32
 FOR -Y17- PROFILE SEE SHEET 41
 FOR INTERSECTION DETAIL SEE SHEET 2B-3
 FOR DITCH DETAILS SEE SHEET 2D-1
 FOR RETAINING WALL 2 SEE SHEET W-2

CLEARING AND GRUBBING
 EROSION CONTROL FOR
 CONSTRUCTION SHEET 14

NOTE:
 PLACE TEMPORARY ROCK SEDIMENT DAMS TYPE - B
 AND TEMPORARY ROCK SILT CHECKS TYPE - A AT
 DRAINAGE OUTLETS.

SOME CLEARING WORK SHOWN ON
 THESE PLANS WAS PERFORMED UNDER
 THE R-5726A PROJECT



8/17/99
 7/2/2024
 R-5726_EC_PSH.CG.dgn
 8:24:33 AM

ALL DRIVEWAY RADII ARE 10' UNLESS OTHERWISE NOTED ON PLANS.

PROJECT REFERENCE NO. <i>R-5726</i>	SHEET NO. <i>EC-15/CONST J5</i>
ROADWAY DESIGN ENGINEER	HYDRAULICS ENGINEER
MOTT MACDONALD I & E, LLC LICENSE NO. F-0669	HDR ENGINEERING LICENSE NO. F-0116

Prepared in the Office of:
M MOTT MACDONALD
 PO Box 700
 Fuquay-Varina, NC 27526
 www.mottmac.com/americas

HDR HDR Engineering, Inc. of the Carolinas
 555 Fayetteville St., Suite 900, Raleigh, NC 27601
 N.C.B.E.L.S. License Number: F-0116

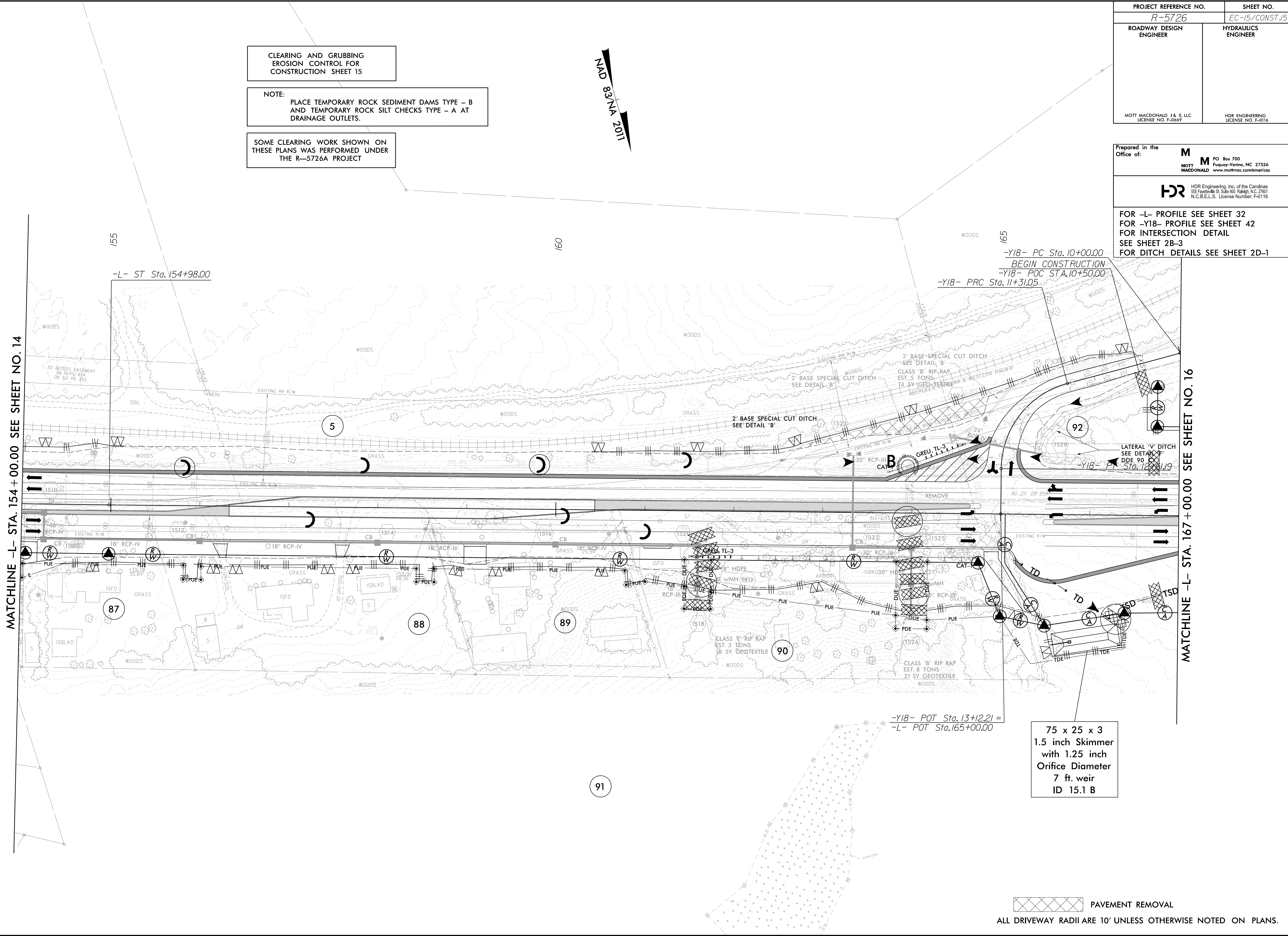
FOR -L- PROFILE SEE SHEET 32
 FOR -Y18- PROFILE SEE SHEET 42
 FOR INTERSECTION DETAIL SEE SHEET 2B-3
 FOR DITCH DETAILS SEE SHEET 2D-1

CLEARING AND GRUBBING EROSION CONTROL FOR CONSTRUCTION SHEET 15

NOTE: PLACE TEMPORARY ROCK SEDIMENT DAMS TYPE - B AND TEMPORARY ROCK SILT CHECKS TYPE - A AT DRAINAGE OUTLETS.

SOME CLEARING WORK SHOWN ON THESE PLANS WAS PERFORMED UNDER THE R-5726A PROJECT

NAD 83/NA 2011



MATCHLINE -L- STA. 154+00.00 SEE SHEET NO. 14

MATCHLINE -L- STA. 167+00.00 SEE SHEET NO. 16

75 x 25 x 3
 1.5 inch Skimmer
 with 1.25 inch
 Orifice Diameter
 7 ft. weir
 ID 15.1 B

PAVEMENT REMOVAL
 ALL DRIVEWAY RADII ARE 10' UNLESS OTHERWISE NOTED ON PLANS.

8/17/99
 7/2/2024
 R:\5726\EC_PSH.CG.dgn
 8:44:36 AM

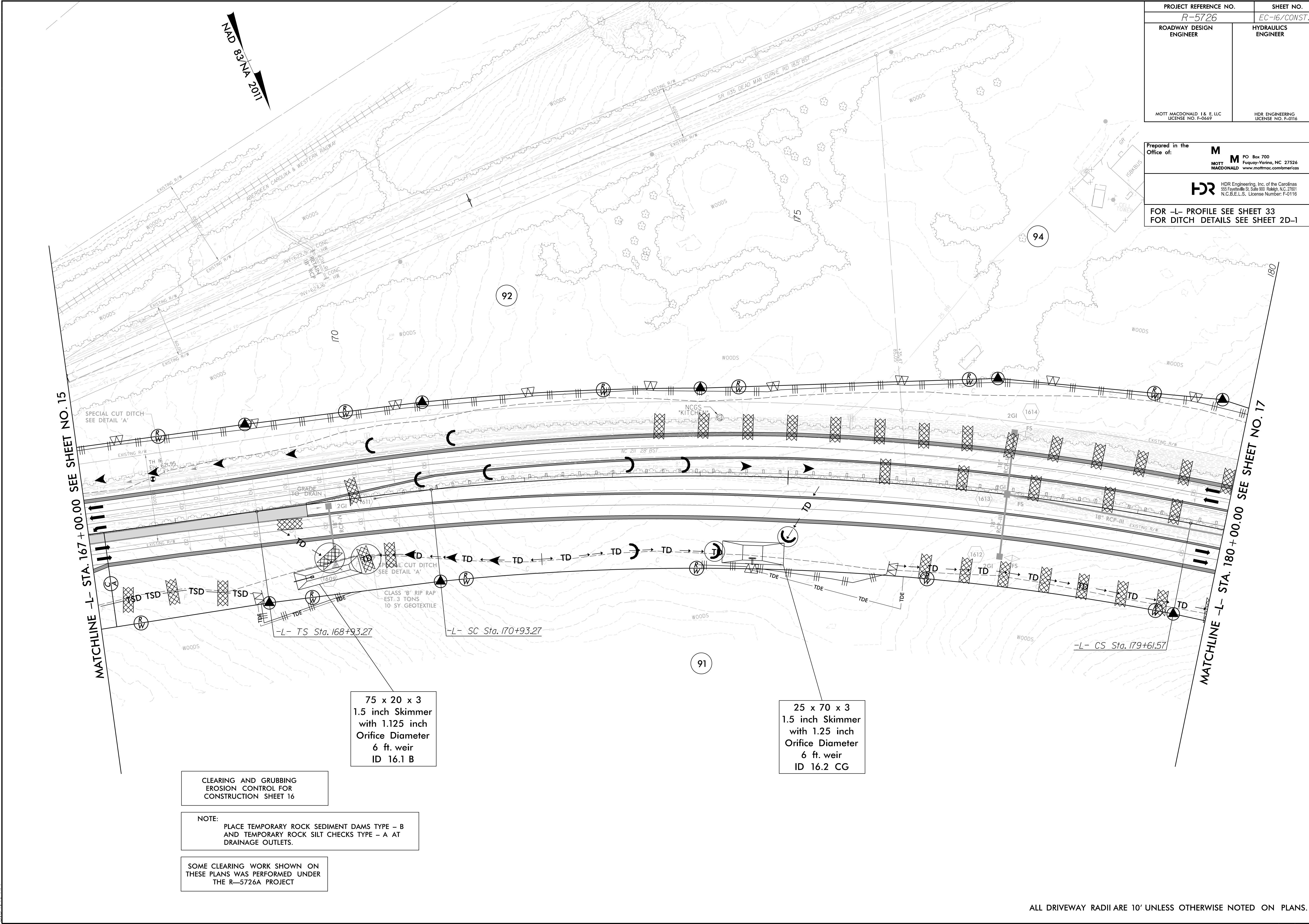
PROJECT REFERENCE NO. R-5726	SHEET NO. EC-16/CONST J6
ROADWAY DESIGN ENGINEER	HYDRAULICS ENGINEER
MOTT MACDONALD I & E, LLC LICENSE NO. F-0669	HDR ENGINEERING LICENSE NO. F-0116

Prepared in the Office of:

M MOTT MACDONALD
 PO Box 700
 Fuquay-Varina, NC 27526
 www.mottmac.com/americas

HDR HDR Engineering, Inc. of the Carolinas
 555 Fayetteville St., Suite 900, Raleigh, NC 27601
 N.C.B.E.L.S. License Number: F-0116

FOR -L- PROFILE SEE SHEET 33
 FOR DITCH DETAILS SEE SHEET 2D-1



MATCHLINE -L- STA. 167+00.00 SEE SHEET NO. 15

MATCHLINE -L- STA. 180+00.00 SEE SHEET NO. 17

75 x 20 x 3
 1.5 inch Skimmer
 with 1.125 inch
 Orifice Diameter
 6 ft. weir
 ID 16.1 B

25 x 70 x 3
 1.5 inch Skimmer
 with 1.25 inch
 Orifice Diameter
 6 ft. weir
 ID 16.2 CG

CLEARING AND GRUBBING
 EROSION CONTROL FOR
 CONSTRUCTION SHEET 16

NOTE:
 PLACE TEMPORARY ROCK SEDIMENT DAMS TYPE - B
 AND TEMPORARY ROCK SILT CHECKS TYPE - A AT
 DRAINAGE OUTLETS.

SOME CLEARING WORK SHOWN ON
 THESE PLANS WAS PERFORMED UNDER
 THE R-5726A PROJECT

ALL DRIVEWAY RADII ARE 10' UNLESS OTHERWISE NOTED ON PLANS.

8/17/99
 7/2/2024
 R:\S\5726_EC_PSH.CG.dgn
 8:44:41 AM

CLEARING AND GRUBBING EROSION CONTROL FOR CONSTRUCTION SHEET 17

NOTE: PLACE TEMPORARY ROCK SEDIMENT DAMS TYPE - B AND TEMPORARY ROCK SILT CHECKS TYPE - A AT DRAINAGE OUTLETS.

SOME CLEARING WORK SHOWN ON THESE PLANS WAS PERFORMED UNDER THE R-5726A PROJECT

Modified Silt Basin Type 'B' 58 x 36 x 3 15 ft. weir (See Tiered Skimmer Basin Detail) ID 17.3 B

58 x 36 x 3 2.0 inch Skimmer with 1.625 inch Orifice Diameter 15 ft. weir (See Tiered Skimmer Basin Detail) ID 17.3 B

95 x 36 x 3 2.0 inch Skimmer with 1.625 inch Orifice Diameter 14 ft. weir ID 17.7 B

INSTALL PIPE(S) IN JURISDICTIONAL AREAS WITHOUT IMPACTING STREAM UNTIL AREA STABILIZED AND ACCORDING TO NCDOT BEST MANAGEMENT PRACTICES FOR CONSTRUCTION AND MAINTENANCE ACTIVITIES MANUAL.

ENVIRONMENTALLY SENSITIVE AREA SEE PROJECT SPECIAL PROVISIONS

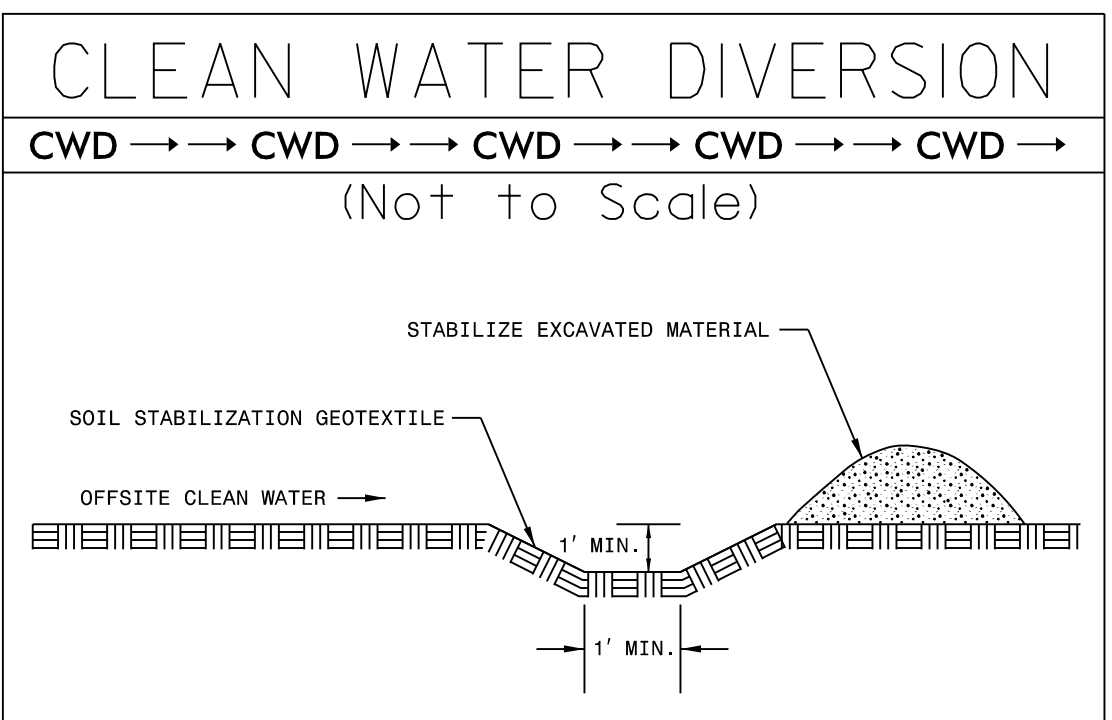
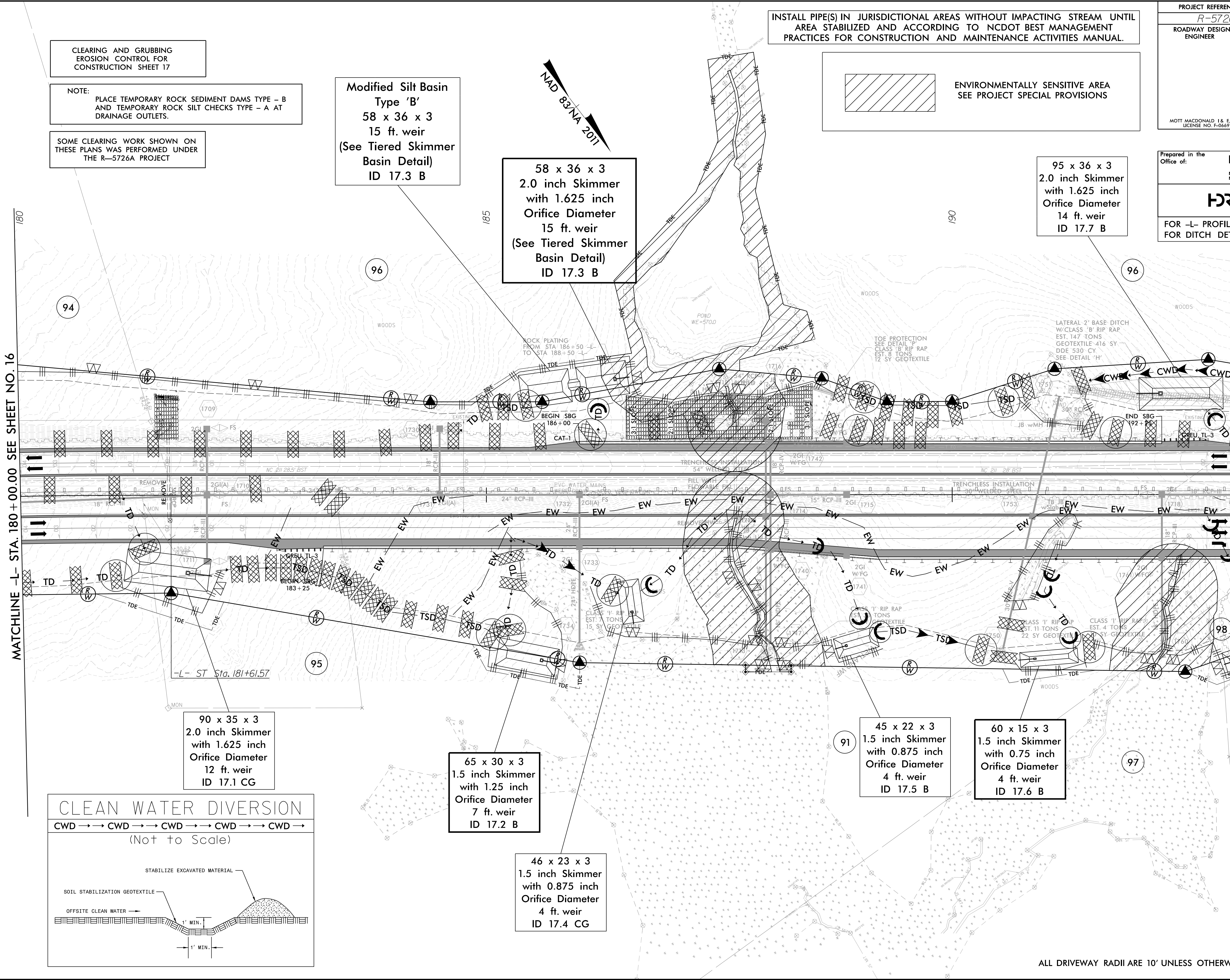
Prepared in the Office of: **M** MOTT MACDONALD PO Box 700 Fuquay-Varina, NC 27526 www.mottmac.com/americas

HDR HDR Engineering, Inc. of the Carolinas 555 Fayetteville St., Suite 900 Raleigh, NC 27601 N.C.B.E.L.S. License Number: F-0116


FOR -L- PROFILE SEE SHEET 33 FOR DITCH DETAILS SEE SHEET 2D-1

MATCHLINE -L- STA. 180 + 00.00 SEE SHEET NO. 16

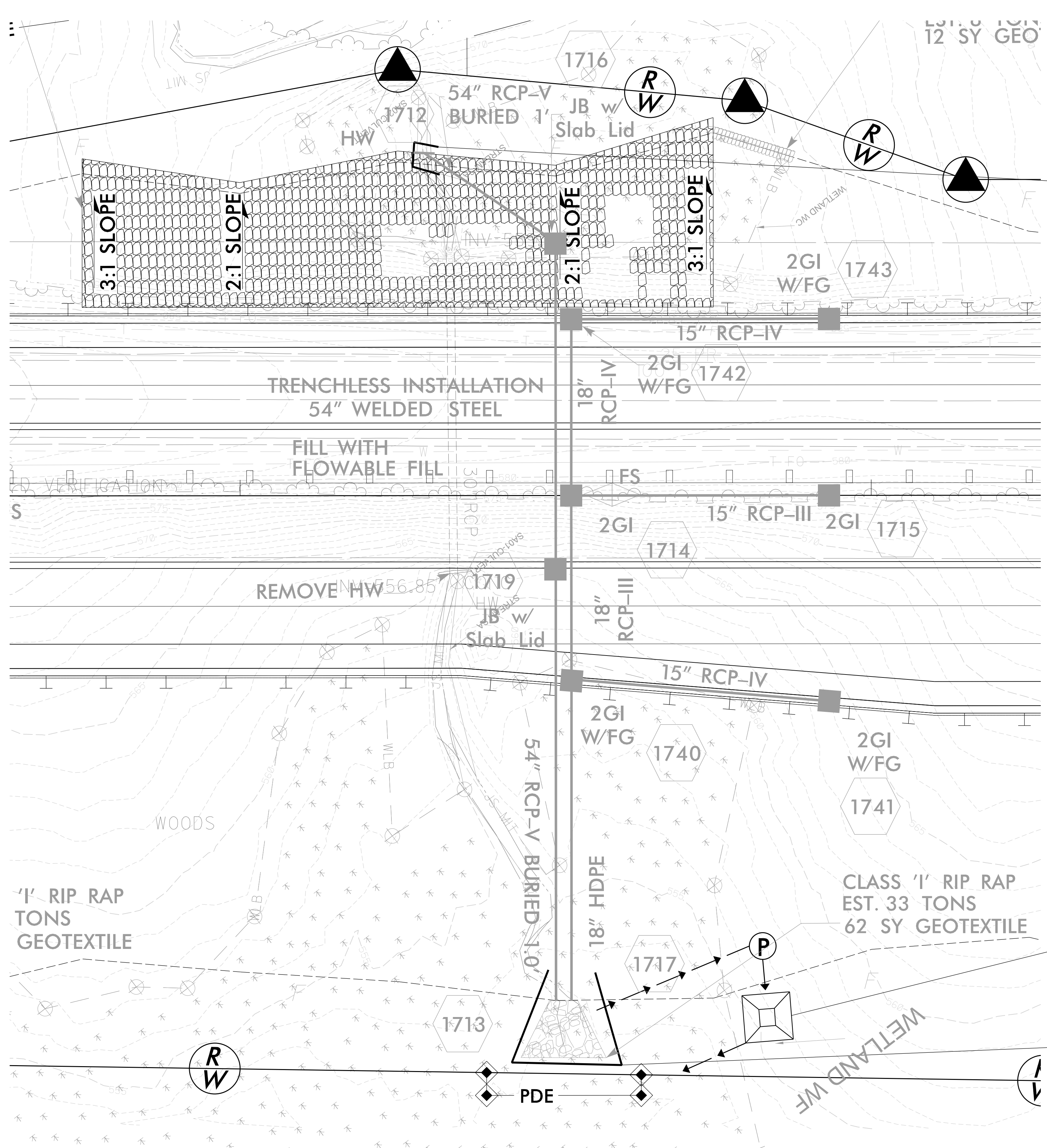
MATCHLINE -L- STA. 193 + 00.00 SEE SHEET NO. 18



54" RCP CULVERT CONSTRUCTION SEQUENCE STA. 188+00 -L-

PROJECT REFERENCE NO. R-5726	SHEET NO. EC-17A/CONST.17
RW SHEET NO.	
ROADWAY DESIGN ENGINEER	HYDRAULICS ENGINEER
 HDR Engineering, Inc. of the Carolinas 555 Fayetteville St, Suite 900 Raleigh, N.C. 27601 N.C.B.E.L.S. License Number: F-0116	

NOT TO SCALE



IMPERVIOUS
DIKE

SPECIAL
STILLING
BASIN

IMPERVIOUS
DIKE

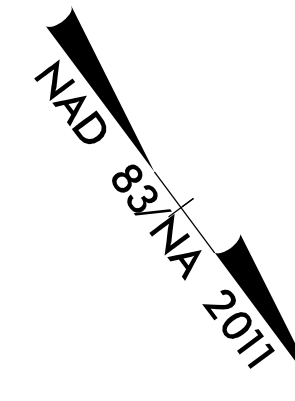
1. INSTALL IMPERVIOUS DIKES AND UTILIZE PUMP(S) AS NECESSARY TO DIVERT FLOW AROUND WORK AREA.
2. PROVIDE PUMP AND SPECIAL STILLING BASIN(S) FOR DE-WATERING OF WORK AREA.
3. INSTALL 54" RCP.
4. REMOVE IMPERVIOUS DIKES AND ALLOW FLOW THROUGH NEWLY INSTALLED 54" RCP.
5. REMOVE ANY REMAINING SPECIAL STILLING BASIN(S) AND COMPLETE ROADWAY CONSTRUCTION.

8/17/99

CLEARING AND GRUBBING
EROSION CONTROL FOR
CONSTRUCTION SHEET 18

NOTE:
PLACE TEMPORARY ROCK SEDIMENT DAMS TYPE - B
AND TEMPORARY ROCK SILT CHECKS TYPE - A AT
DRAINAGE OUTLETS.

SOME CLEARING WORK SHOWN ON
THESE PLANS WAS PERFORMED UNDER
THE R-5726A PROJECT



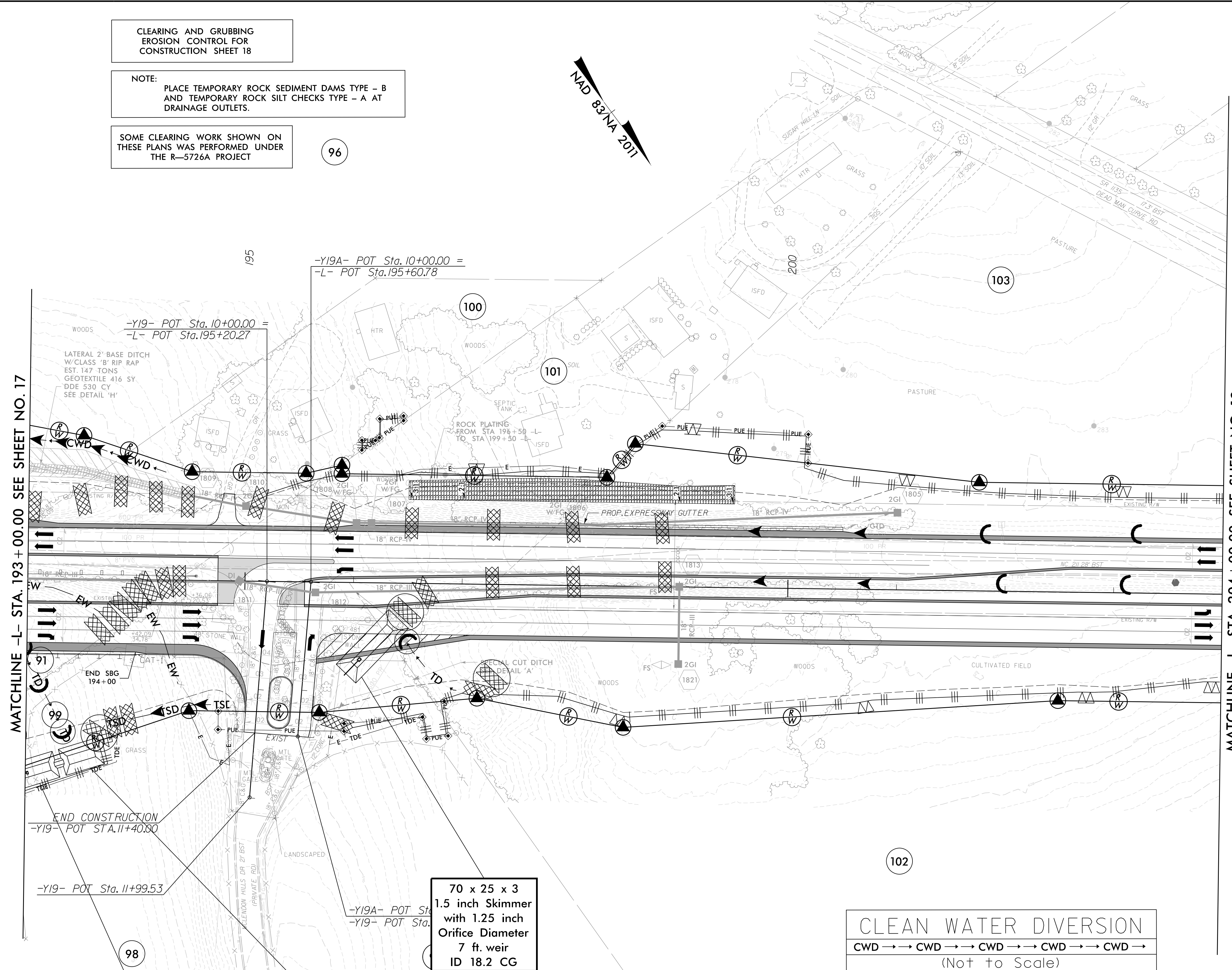
PROJECT REFERENCE NO. R-5726	SHEET NO. EC-18/CONST.18
ROADWAY DESIGN ENGINEER	HYDRAULICS ENGINEER
MOTT MACDONALD I & E, LLC LICENSE NO. F-0669	HDR ENGINEERING LICENSE NO. F-0116

Prepared in the Office of:

M MOTT MACDONALD
 PO Box 700
 Fuquay-Varina, NC 27526
 www.mottmac.com/americas

HDR HDR Engineering, Inc. of the Carolinas
 555 Fayetteville St., Suite 900, Raleigh, NC 27601
 N.C.B.E.L.S. License Number: F-0116

FOR -L- PROFILE SEE SHEET 34
 FOR -Y19- PROFILE SEE SHEET 42
 FOR INTERSECTION DETAIL
 SEE SHEET 2B-3
 FOR DITCH DETAILS SEE SHEET 2D-1



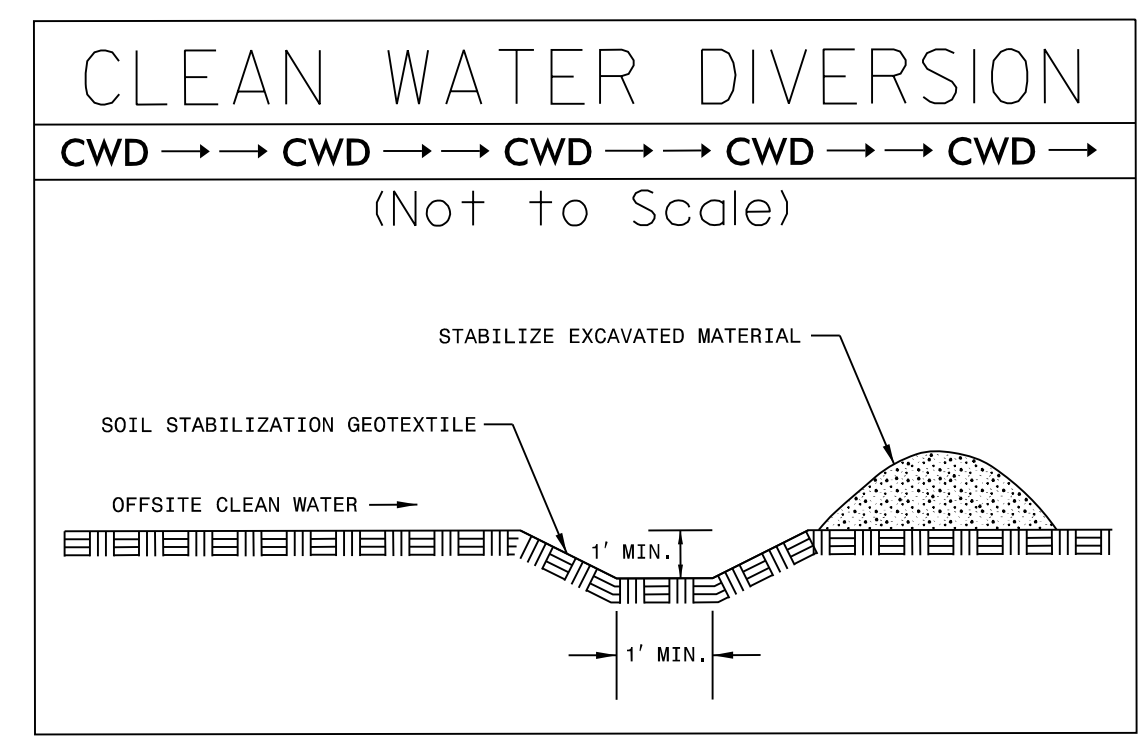
MATCHLINE -L- STA. 193 + 00.00 SEE SHEET NO. 17

MATCHLINE -L- STA. 204 + 00.00 SEE SHEET NO. 19

40 x 25 x 3
 1.5 inch Skimmer
 with 1.125 inch
 Orifice Diameter
 8 ft. weir
 (See Tiered Skimmer
 Basin Detail)
 ID 18.1 B

Modified Silt Basin
 Type 'B'
 40 x 25 x 3
 8 ft. weir
 (See Tiered Skimmer
 Basin Detail)
 ID 18.1 B

70 x 25 x 3
 1.5 inch Skimmer
 with 1.25 inch
 Orifice Diameter
 7 ft. weir
 ID 18.2 CG



ALL DRIVEWAY RADII ARE 10' UNLESS OTHERWISE NOTED ON PLANS.

7/2/2024
R-5726-EC-PSH-CG.dgn
3:55:02 AM

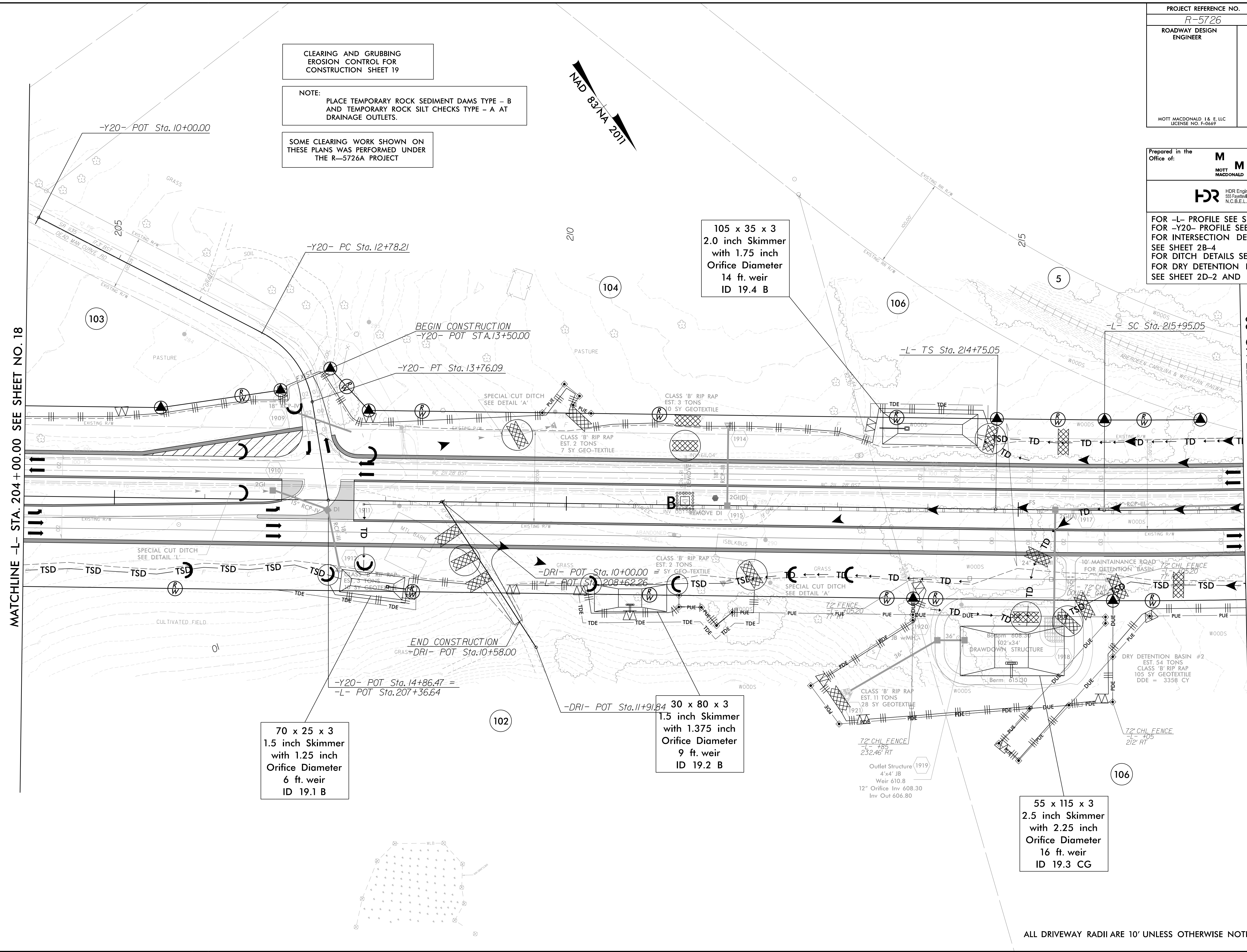
PROJECT REFERENCE NO. <i>R-5726</i>	SHEET NO. <i>EC-19/CONST.19</i>
ROADWAY DESIGN ENGINEER	HYDRAULICS ENGINEER
MOTT MACDONALD I & E, LLC LICENSE NO. F-0669	HDR ENGINEERING LICENSE NO. F-0116

Prepared in the Office of:

M PO Box 700
Fuquay-Varina, NC 27526
www.mottmac.com/americas

HDR HDR Engineering, Inc. of the Carolinas
555 Fayetteville St., Suite 900, Raleigh, NC 27601
N.C.B.E.L.S. License Number: F-0116

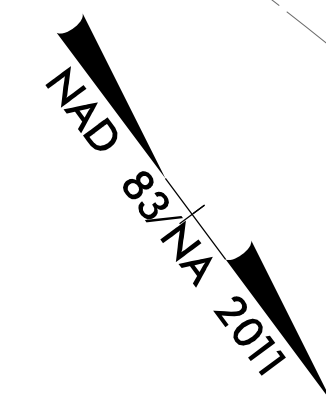
FOR -L- PROFILE SEE SHEET 34
FOR -Y20- PROFILE SEE SHEET 42
FOR INTERSECTION DETAIL SEE SHEET 2B-4
FOR DITCH DETAILS SEE SHEET 2D-1
FOR DRY DETENTION BASIN DETAILS SEE SHEET 2D-2 AND 2D-3



CLEARING AND GRUBBING EROSION CONTROL FOR CONSTRUCTION SHEET 19

NOTE: PLACE TEMPORARY ROCK SEDIMENT DAMS TYPE - B AND TEMPORARY ROCK SILT CHECKS TYPE - A AT DRAINAGE OUTLETS.

SOME CLEARING WORK SHOWN ON THESE PLANS WAS PERFORMED UNDER THE R-5726A PROJECT



105 x 35 x 3
2.0 inch Skimmer
with 1.75 inch
Orifice Diameter
14 ft. weir
ID 19.4 B

70 x 25 x 3
1.5 inch Skimmer
with 1.25 inch
Orifice Diameter
6 ft. weir
ID 19.1 B

30 x 80 x 3
1.5 inch Skimmer
with 1.375 inch
Orifice Diameter
9 ft. weir
ID 19.2 B

55 x 115 x 3
2.5 inch Skimmer
with 2.25 inch
Orifice Diameter
16 ft. weir
ID 19.3 CG

MATCHLINE -L- STA. 204 + 00.00 SEE SHEET NO. 18

MATCHLINE -L- STA. 217 + 50.00 SEE SHEET NO. 20

8/17/99

7/2/2024
R-5726-EC-PSH-LC.dgn
8:55:07 AM

ALL DRIVEWAY RADII ARE 10' UNLESS OTHERWISE NOTED ON PLANS.

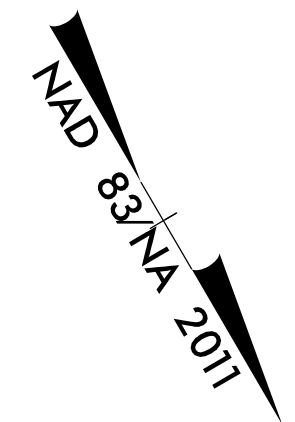
8/17/99

7/2/2024 10:55:11 AM R:\5726_EC_PSH+CG.dgn

CLEARING AND GRUBBING
EROSION CONTROL FOR
CONSTRUCTION SHEET 20

NOTE:
PLACE TEMPORARY ROCK SEDIMENT DAMS TYPE - B
AND TEMPORARY ROCK SILT CHECKS TYPE - A AT
DRAINAGE OUTLETS.

SOME CLEARING WORK SHOWN ON
THESE PLANS WAS PERFORMED UNDER
THE R-5726A PROJECT



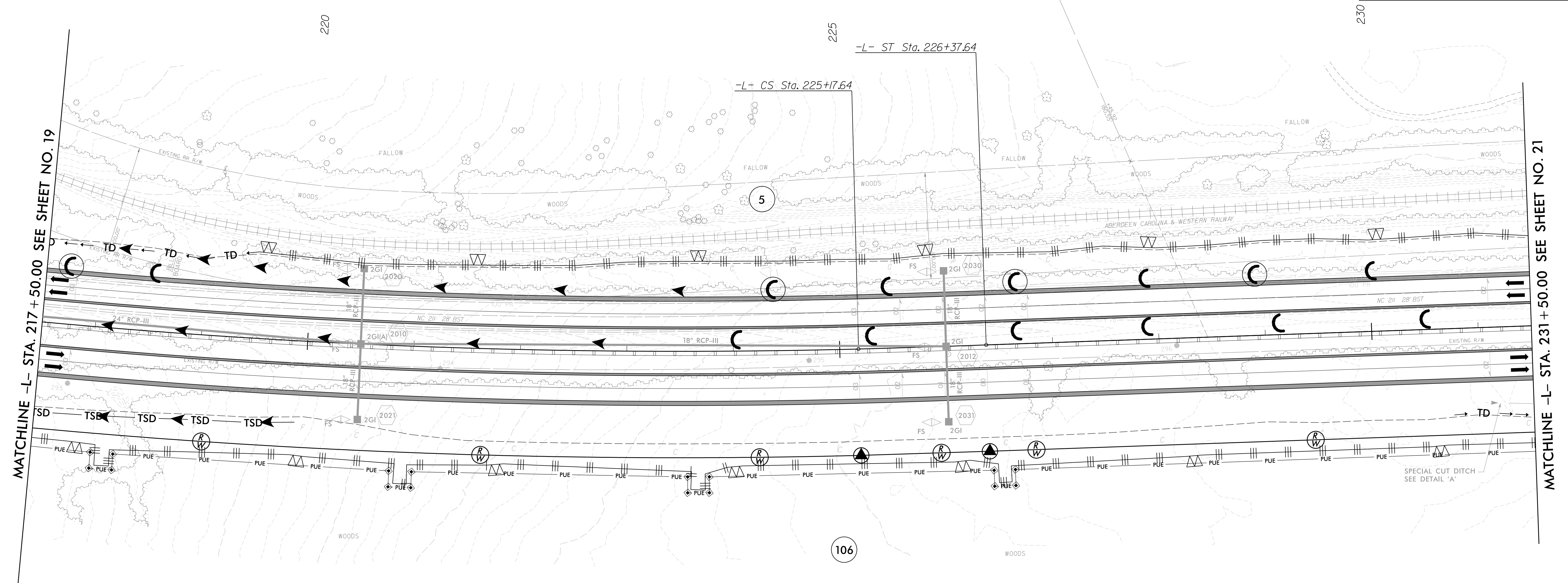
PROJECT REFERENCE NO. <i>R-5726</i>	SHEET NO. <i>EC-20/CONST.20</i>
ROADWAY DESIGN ENGINEER	HYDRAULICS ENGINEER
MOTT MACDONALD I & E, LLC LICENSE NO. F-0669	HDR ENGINEERING LICENSE NO. F-0116

Prepared in the Office of:

M PO Box 700
Fuquay-Varina, NC 27526
MOTT MACDONALD www.mottmac.com/americas

HDR HDR Engineering, Inc. of the Carolinas
555 Fayetteville St., Suite 900, Raleigh, NC 27601
N.C.B.E.L.S. License Number: F-0116

FOR -L- PROFILE SEE SHEET 35
FOR DITCH DETAILS SEE SHEET 2D-1



MATCHLINE -L- STA. 217 + 50.00 SEE SHEET NO. 19

MATCHLINE -L- STA. 231 + 50.00 SEE SHEET NO. 21

ALL DRIVEWAY RADII ARE 10' UNLESS OTHERWISE NOTED ON PLANS.

8/17/99

PROJECT REFERENCE NO. <i>R-5726</i>	SHEET NO. <i>EC-21/CONST.21</i>
ROADWAY DESIGN ENGINEER	HYDRAULICS ENGINEER
MOTT MACDONALD I & E, LLC LICENSE NO. F-0669	HDR ENGINEERING LICENSE NO. F-0116

CLEARING AND GRUBBING
EROSION CONTROL FOR
CONSTRUCTION SHEET 21

NOTE:
PLACE TEMPORARY ROCK SEDIMENT DAMS TYPE - B
AND TEMPORARY ROCK SILT CHECKS TYPE - A AT
DRAINAGE OUTLETS.

SOME CLEARING WORK SHOWN ON
THESE PLANS WAS PERFORMED UNDER
THE R-5726A PROJECT

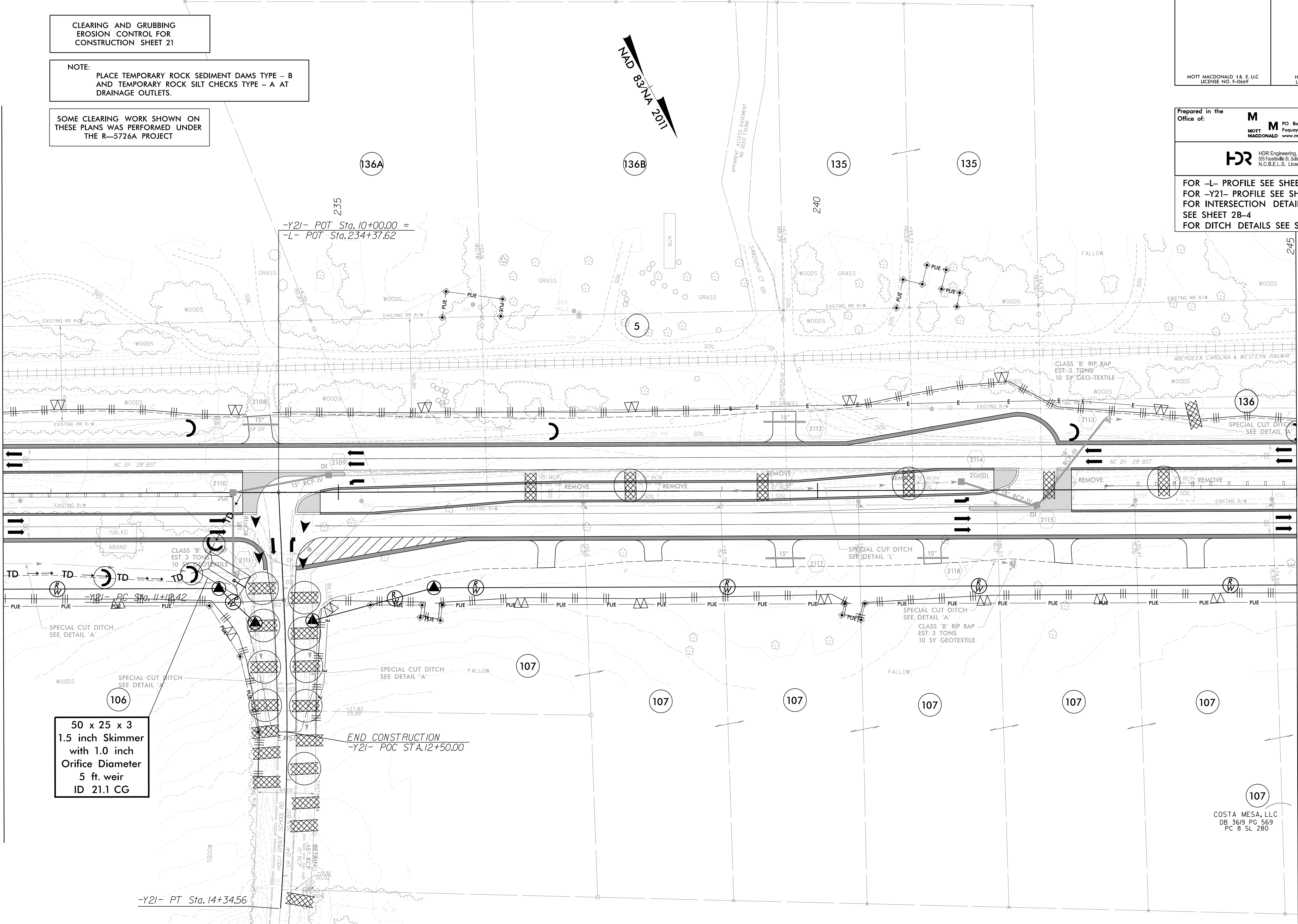
Prepared in the
Office of: **M** M PO Box 700
Fuquay-Varina, NC 27526
MOTT MACDONALD www.mottmac.com/americas

HDR HDR Engineering, Inc. of the Carolinas
555 Fayetteville St., Suite 900, Raleigh, NC 27601
N.C.B.E.L.S. License Number: F-0116

FOR -L- PROFILE SEE SHEET 35
FOR -Y21- PROFILE SEE SHEET 42
FOR INTERSECTION DETAIL
SEE SHEET 2B-4
FOR DITCH DETAILS SEE SHEET 2D-1

MATCHLINE -L- STA. 231 + 50.00 SEE SHEET NO. 20

MATCHLINE -L- STA. 245 + 00.00 SEE SHEET NO. 22



50 x 25 x 3
1.5 inch Skimmer
with 1.0 inch
Orifice Diameter
5 ft. weir
ID 21.1 CG

END CONSTRUCTION
-Y21- POC STA. 12+50.00

COSTA MESA, LLC
DB 3619 PG 569
PC 8 SL 280

7/2/2024
R-5726-EC-PSH-CG.dgn
8:55:16 AM

ALL DRIVEWAY RADII ARE 10' UNLESS OTHERWISE NOTED ON PLANS.

PROJECT REFERENCE NO. <i>R-5726</i>	SHEET NO. <i>EC-22/CONST.22</i>
ROADWAY DESIGN ENGINEER	HYDRAULICS ENGINEER
MOTT MACDONALD I & E, LLC LICENSE NO. F-0669	HDR ENGINEERING LICENSE NO. F-0116

Prepared in the Office of:

M MOTT MACDONALD
 PO Box 700
 Fuquay-Varina, NC 27526
 www.mottmac.com/americas

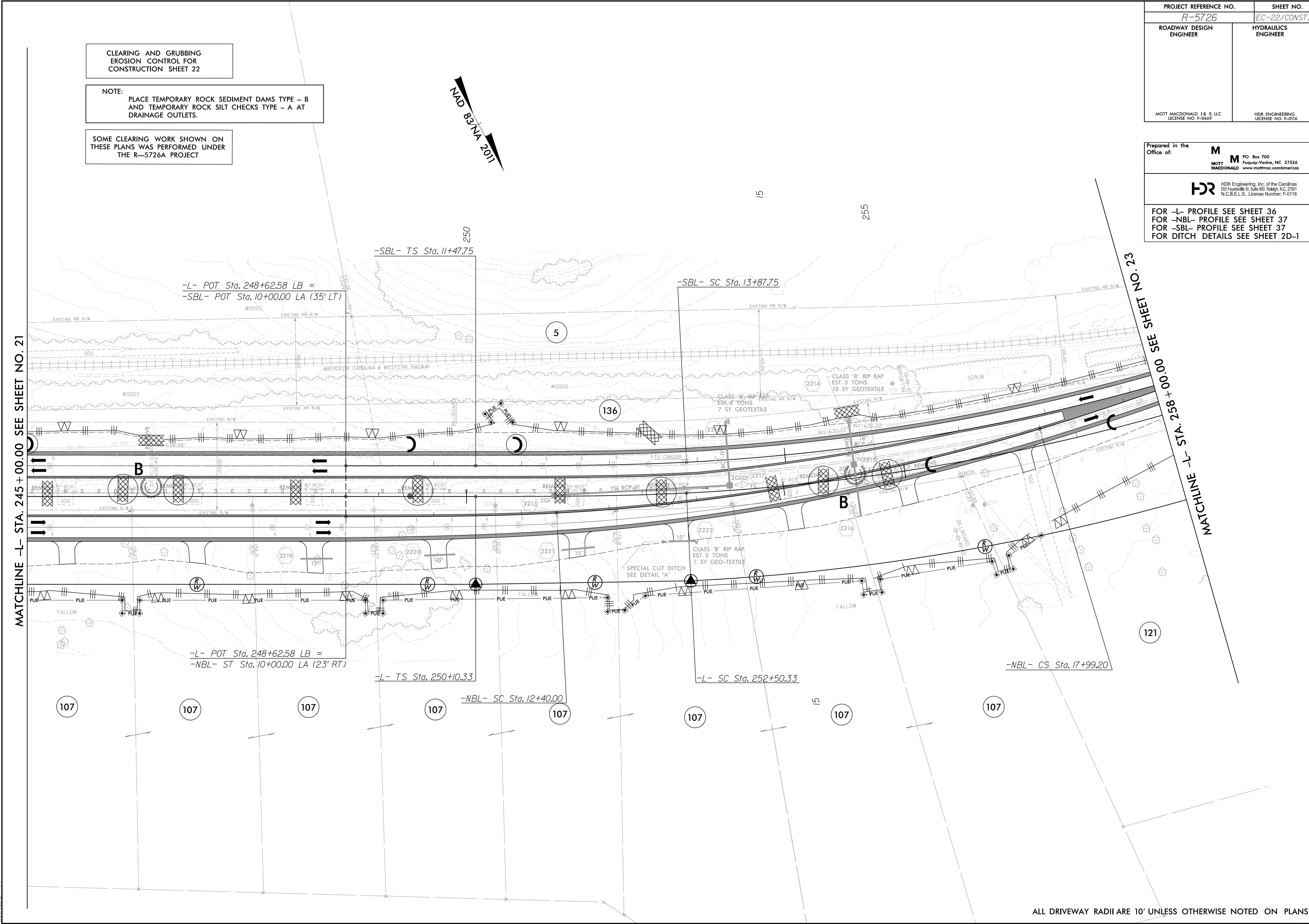
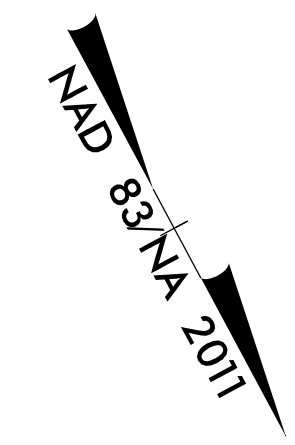
HDR HDR Engineering, Inc. of the Carolinas
 555 Fayetteville St., Suite 900, Raleigh, NC 27601
 N.C.B.E.L.S. License Number: F-0116

FOR -L- PROFILE SEE SHEET 36
 FOR -NBL- PROFILE SEE SHEET 37
 FOR -SBL- PROFILE SEE SHEET 37
 FOR DITCH DETAILS SEE SHEET 2D-1

CLEARING AND GRUBBING
 EROSION CONTROL FOR
 CONSTRUCTION SHEET 22

NOTE:
 PLACE TEMPORARY ROCK SEDIMENT DAMS TYPE - B
 AND TEMPORARY ROCK SILT CHECKS TYPE - A AT
 DRAINAGE OUTLETS.

SOME CLEARING WORK SHOWN ON
 THESE PLANS WAS PERFORMED UNDER
 THE R-5726A PROJECT



MATCHLINE -L- STA. 245+00.00 SEE SHEET NO. 21

MATCHLINE -L- STA. 258+00.00 SEE SHEET NO. 23

8/17/99

7/2/2024
 R-5726-EC-PSH-CG.dgn
 8:55:20 AM

ALL DRIVEWAY RADII ARE 10' UNLESS OTHERWISE NOTED ON PLANS.

8/17/99

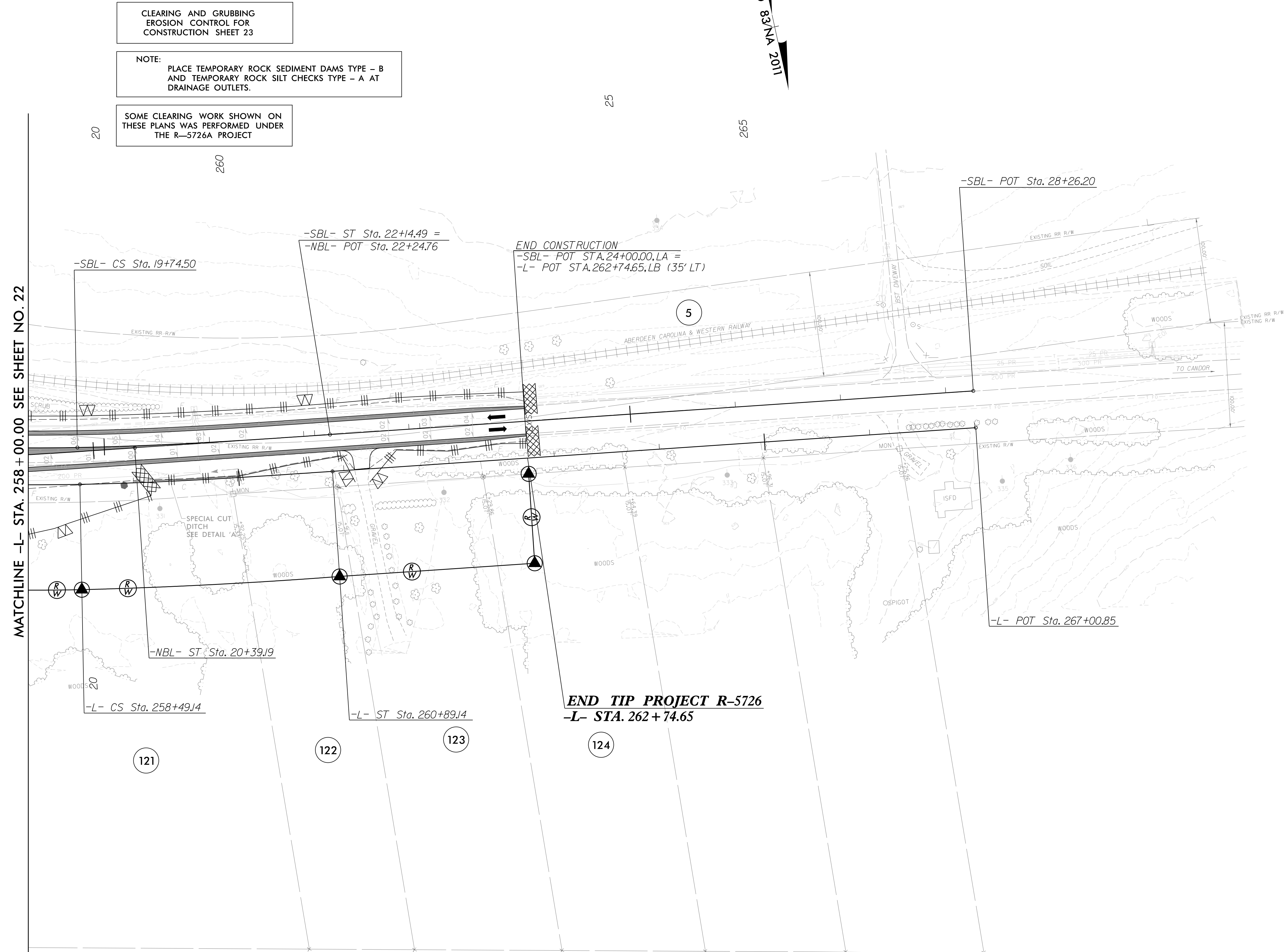
PROJECT REFERENCE NO. <i>R-5726</i>	SHEET NO. <i>EC-23/CONST.23</i>
ROADWAY DESIGN ENGINEER	HYDRAULICS ENGINEER
MOTT MACDONALD I & E, LLC LICENSE NO. F-0669	HDR ENGINEERING LICENSE NO. F-0116

Prepared in the Office of:

M PO Box 700
Fuquay-Varina, NC 27526
MOTT MACDONALD www.mottmac.com/americas

HDR HDR Engineering, Inc. of the Carolinas
555 Fayetteville St., Suite 900, Raleigh, N.C. 27601
N.C.B.E.L.S. License Number: F-0116

FOR -L- PROFILE SEE SHEET 36
FOR -NBL- PROFILE SEE SHEET 37
FOR -SBL- PROFILE SEE SHEET 37
FOR DITCH DETAILS SEE SHEET 2D-1



CLEARING AND GRUBBING
EROSION CONTROL FOR
CONSTRUCTION SHEET 23

NOTE:
PLACE TEMPORARY ROCK SEDIMENT DAMS TYPE - B
AND TEMPORARY ROCK SILT CHECKS TYPE - A AT
DRAINAGE OUTLETS.

SOME CLEARING WORK SHOWN ON
THESE PLANS WAS PERFORMED UNDER
THE R-5726A PROJECT

MATCHLINE -L- STA. 258 + 00.00 SEE SHEET NO. 22

END TIP PROJECT R-5726
-L- STA. 262 + 74.65

7/2/2024
R:\5726\EC_PSH.CG.dgn
8:55:25 AM

ALL DRIVEWAY RADII ARE 10' UNLESS OTHERWISE NOTED ON PLANS.

PROJECT REFERENCE NO. <i>R-5726</i>	SHEET NO. <i>EC-24/CONST.24</i>
ROADWAY DESIGN ENGINEER	HYDRAULICS ENGINEER
MOTT MACDONALD I & E, LLC LICENSE NO. F-0669	HDR ENGINEERING LICENSE NO. F-0116

Prepared in the Office of:
M MOTT MACDONALD
 PO Box 700
 Fuquay-Varina, NC 27526
 www.mottmac.com/americas

HDR HDR Engineering, Inc. of the Carolinas
 555 Fayetteville St., Suite 900, Raleigh, NC 27601
 N.C.B.E.L.S. License Number: F-0116

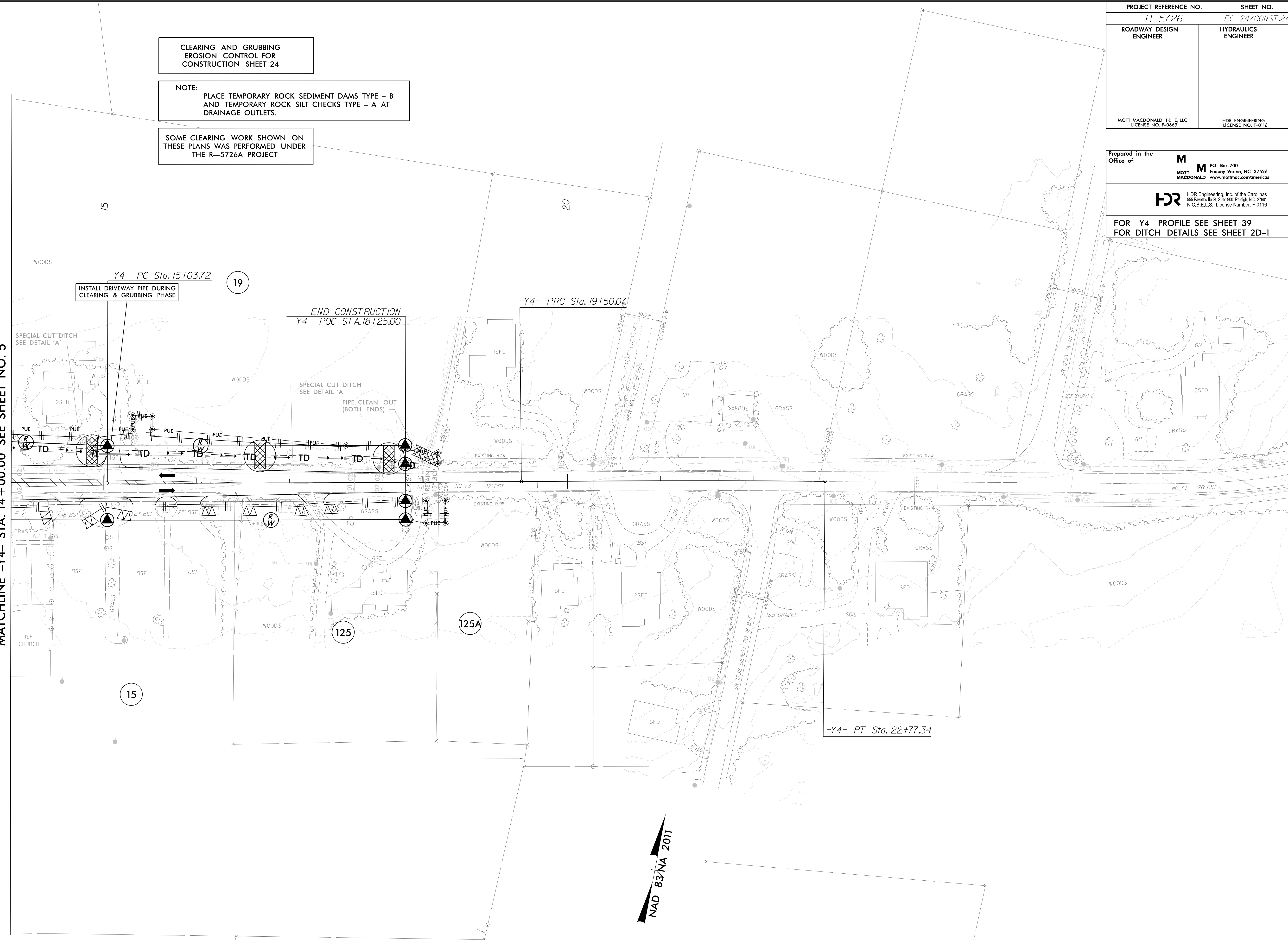
FOR -Y4- PROFILE SEE SHEET 39
 FOR DITCH DETAILS SEE SHEET 2D-1

CLEARING AND GRUBBING EROSION CONTROL FOR CONSTRUCTION SHEET 24

NOTE: PLACE TEMPORARY ROCK SEDIMENT DAMS TYPE - B AND TEMPORARY ROCK SILT CHECKS TYPE - A AT DRAINAGE OUTLETS.

SOME CLEARING WORK SHOWN ON THESE PLANS WAS PERFORMED UNDER THE R-5726A PROJECT

MATCHLINE -Y4- STA. 14 + 00.00 SEE SHEET NO. 5



ALL DRIVEWAY RADII ARE 10' UNLESS OTHERWISE NOTED ON PLANS.

8/17/99
7/2/2024
R-5726-EC-PSH-CG.dgn
3:55:30 AM

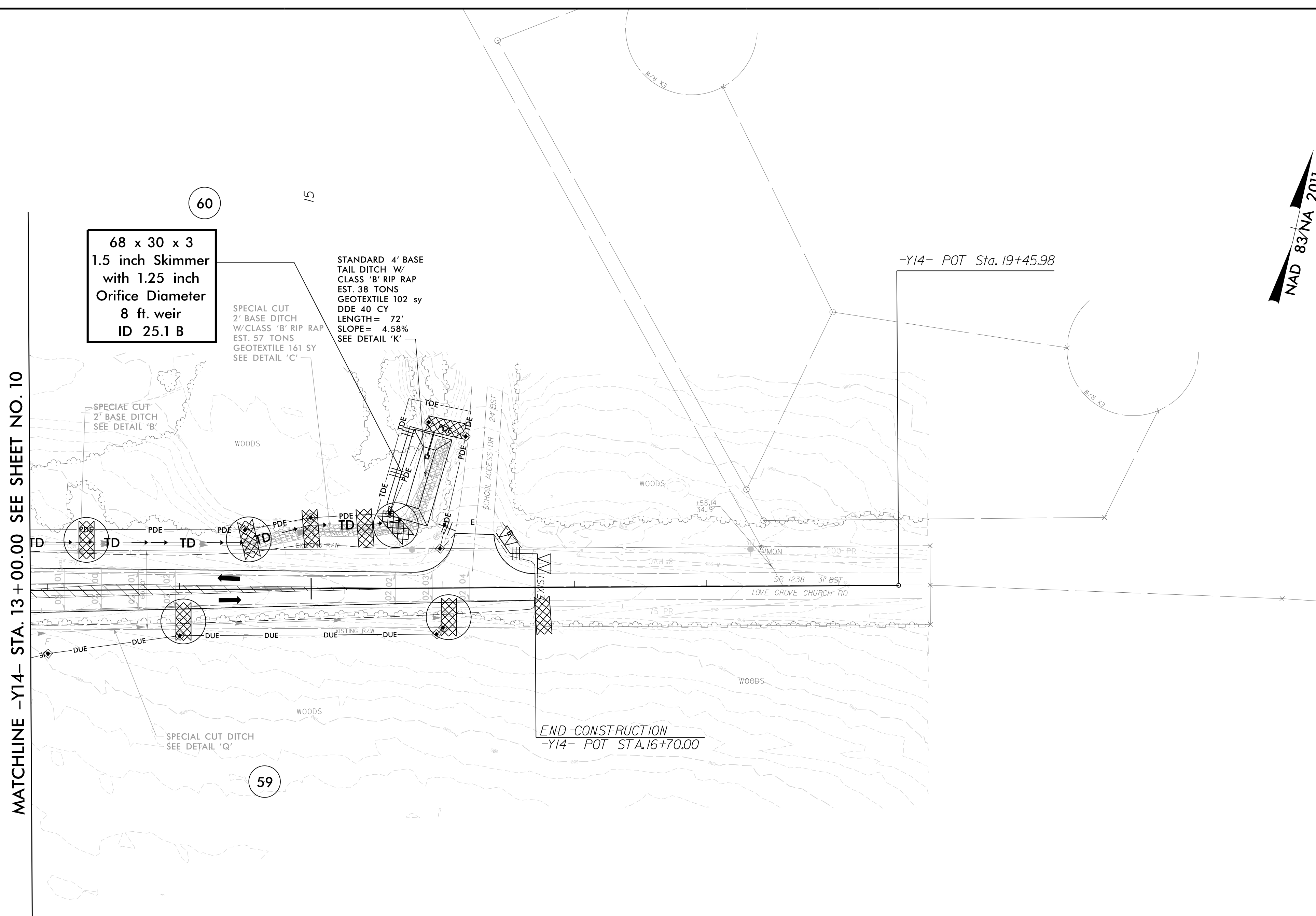
8/17/99

PROJECT REFERENCE NO. <i>R-5726</i>	SHEET NO. <i>EC-25/CONST.25</i>
ROADWAY DESIGN ENGINEER	HYDRAULICS ENGINEER
MOTT MACDONALD, I & E, LLC LICENSE NO. F-0669	HDR ENGINEERING LICENSE NO. F-0116

Prepared in the Office of: **M** MOTT MACDONALD
 PO Box 700
 Fuquay-Varina, NC 27526
 www.mottmac.com/americas

HDR HDR Engineering, Inc. of the Carolinas
 555 Fayetteville St., Suite 900, Raleigh, NC 27601
 N.C.B.E.L.S. License Number: F-0116

FOR -Y14- PROFILE SEE SHEET 41
 FOR DITCH DETAILS SEE SHEET 2D-1



68 x 30 x 3
 1.5 inch Skimmer
 with 1.25 inch
 Orifice Diameter
 8 ft. weir
 ID 25.1 B

STANDARD 4' BASE
 TAIL DITCH W/
 CLASS 'B' RIP RAP
 EST. 38 TONS
 GEOTEXTILE 102 sy
 DDE 40 CY
 LENGTH = 72'
 SLOPE = 4.58%
 SEE DETAIL 'K'

SPECIAL CUT
 2' BASE DITCH
 W/CLASS 'B' RIP RAP
 EST. 57 TONS
 GEOTEXTILE 161 SY
 SEE DETAIL 'C'

SPECIAL CUT
 2' BASE DITCH
 SEE DETAIL 'B'

SPECIAL CUT DITCH
 SEE DETAIL 'Q'

END CONSTRUCTION
 -Y14- POT STA. 16+70.00

MATCHLINE -Y14- STA. 13+00.00 SEE SHEET NO. 10

CLEARING AND GRUBBING
 EROSION CONTROL FOR
 CONSTRUCTION SHEET 25

NOTE:
 PLACE TEMPORARY ROCK SEDIMENT DAMS TYPE - B
 AND TEMPORARY ROCK SILT CHECKS TYPE - A AT
 DRAINAGE OUTLETS.

SOME CLEARING WORK SHOWN ON
 THESE PLANS WAS PERFORMED UNDER
 THE R-5726A PROJECT

7/2/2024 11:56:57 AM R:\5726\EC_PSH.CG.dgn

ALL DRIVEWAY RADII ARE 10' UNLESS OTHERWISE NOTED ON PLANS.