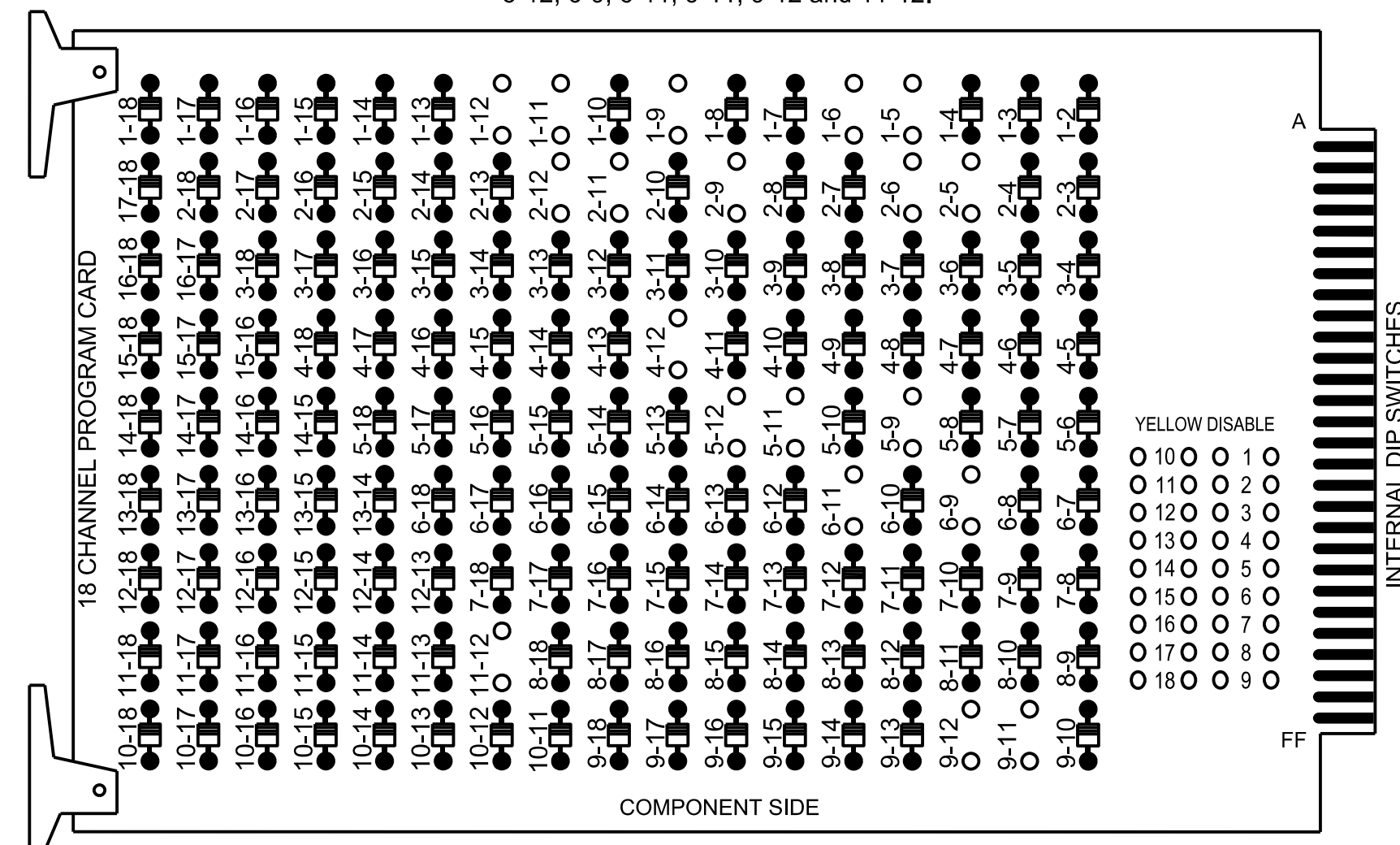


18 CHANNEL CONFLICT MONITOR PROGRAMMING DETAIL

(remove jumpers and set switches as shown)

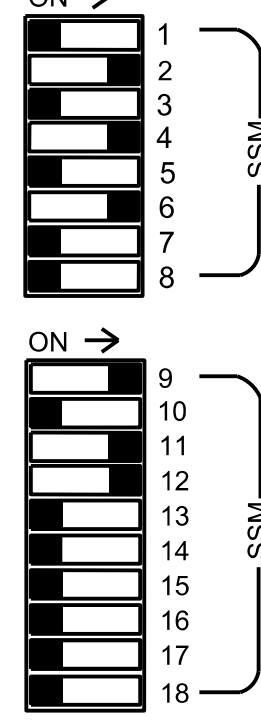
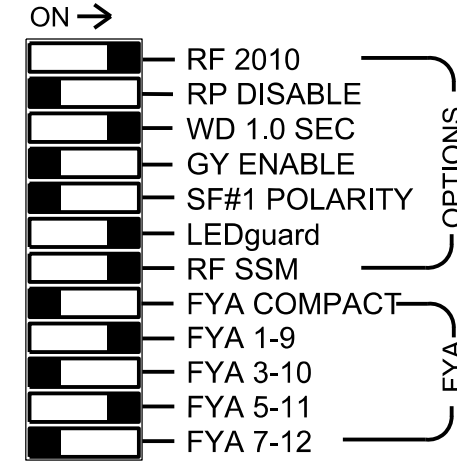
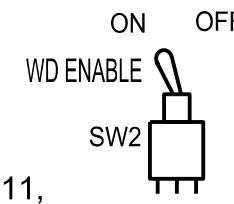
REMOVE DIODE JUMPERS 1-5, 1-6, 1-9, 1-11, 1-12, 2-5, 2-6, 2-9, 2-11, 2-12, 4-12, 5-9, 5-11, 5-12, 6-9, 6-11, 9-11, 9-12 and 11-12.



REMOVE JUMPERS AS SHOWN

NOTES:

- Card is provided with all diode jumpers in place. Removal of any jumper allows its channels to run concurrently.
- Ensure jumpers SEL2-SEL5 and SEL9 are present on the monitor board.
- Ensure that the Red Enable is active at all times during normal operation.
- Connect serial cable from conflict monitor to comm. port 1 of 2070 controller. Ensure conflict monitor communicates with 2070.



■ = DENOTES POSITION OF SWITCH

NOTES

- To prevent "flash-conflict" problems, insert red flash program blocks for all unused vehicle load switches in the output file. The installer shall verify that signal heads flash in accordance with the signal plan.
- Program controller to start up in phase 2 Green No Walk and 6 Green No Walk.
- If this signal will be managed by an ATMS software, enable controller and detector logging for all detectors used at this location.

EQUIPMENT INFORMATION

Controller.....2070LX
 Cabinet.....332 w/ Aux
 Software.....Q-Free MAXTIME
 Cabinet Mount.....Base
 Output File Positions.....18 With Aux. Output File
 Load Switches Used.....S1, S2, S5, S7, S8, AUX S1, AUX S4, AUX S5
 Phases Used.....1, 2, 4, 5, 6
 Overlap "1".....*
 Overlap "2".....NOT USED
 Overlap "3".....*
 Overlap "4".....*

*See overlap programming detail on sheet 2

SIGNAL HEAD HOOK-UP CHART

LOAD SWITCH NO.	S1	S2	S3	S4	S5	S6	S7	S8	S9	S10	S11	S12	AUX S1	AUX S2	AUX S3	AUX S4	AUX S5	AUX S6
CMU CHANNEL NO.	1	2	13	3	4	14	5	6	15	7	8	16	9	10	17	11	12	18
PHASE	1	2	2 PED	3	4	4 PED	5	6	6 PED	7	8	8 PED	OL1	OL2	SPARE	OL3	OL4	SPARE
SIGNAL HEAD NO.	11	21,22	NU	NU	41	NU	51	61,62,63	NU	NU	NU	NU	11	NU	NU	51	42,43	NU
RED		128			101			134										A101
YELLOW	*	129					*	135										
GREEN		130						136										
RED ARROW													A121				A114	
YELLOW ARROW						102							A122			A115	A102	
FLASHING YELLOW ARROW													A123			A116		
GREEN ARROW	127					103	133											A103

NU = Not Used
 *Denotes install load resistor. See load resistor installation detail this sheet.
 *See pictorial of head wiring in detail this sheet.

INPUT FILE POSITION LAYOUT

(front view)

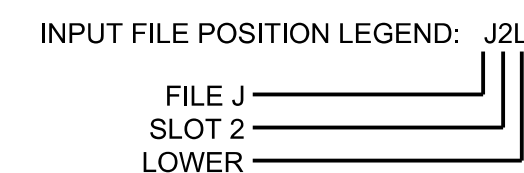
FILE	1	2	3	4	5	6	7	8	9	10	11	12	13	14	
U	∅ 1	∅ 2	NOT USED	∅ 3	∅ 4	∅ 5	∅ 6	∅ 7	∅ 8	∅ 9	∅ 10	∅ 11	∅ 12	∅ 13	FS
L	1A	2A		3A	4A	5A	6A	7A	8A	9A	10A	11A	12A	13A	DC ISOLATOR
U	NOT USED	∅ 2	∅ 5	∅ 6	∅ 7	∅ 8	∅ 9	∅ 10	∅ 11	∅ 12	∅ 13	∅ 14	∅ 15	∅ 16	ST
L		2B	5B												DC ISOLATOR

EX.: 1A, 2A, ETC. = LOOP NO.'S

FS = FLASH SENSE
 ST = STOP TIME

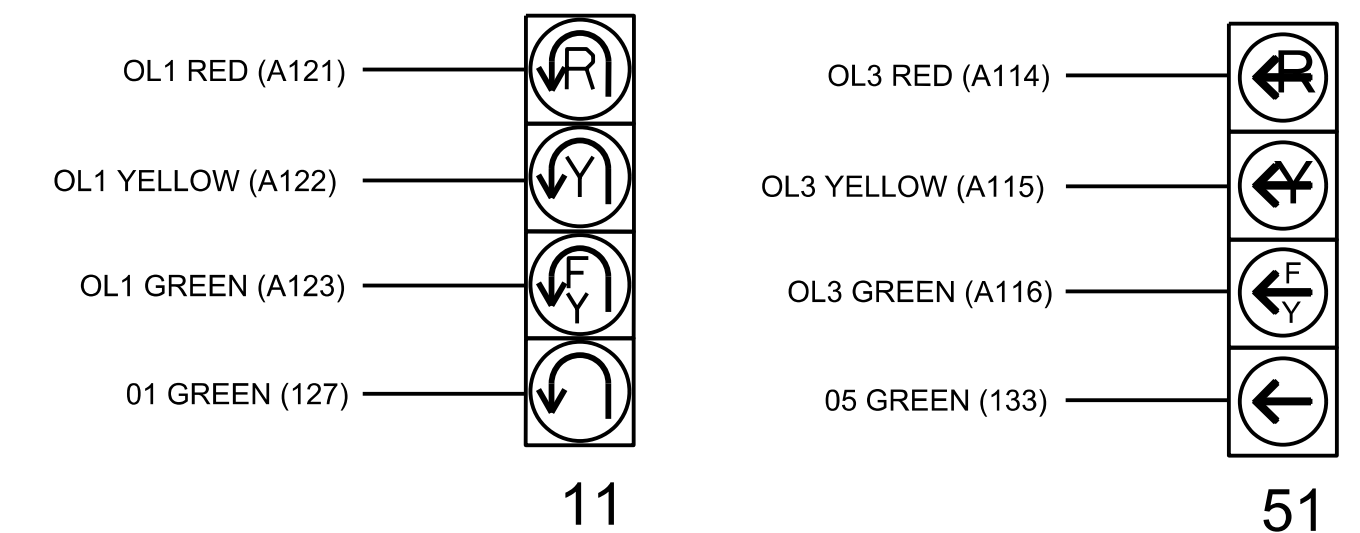
INPUT FILE CONNECTION & PROGRAMMING CHART

LOOP NO.	LOOP TERMINAL	INPUT FILE POS.	PIN NO.	INPUT POINT	DETECTOR NO.	CALL PHASE	DELAY TIME	EXTEND TIME	EXTEND	ADDED INITIAL	CALL	DELAY DURING GREEN
1A	TB2-1,2	I1U	56	18	1	1	30.0		X		X	
2A	TB2-5,6	I2U	39	1	2	2	3.0		X	X	X	X
2B	TB2-7,8	I2L	43	5	3	2			X	X	X	
4A	TB4-9,10	I6U	41	3	8	4	3.0		X		X	
5A	TB3-1,2	J1U	55	17	15	5	15.0		X		X	
5B	TB2-11,12	I3L	76	42	5	5	3.0		X		X	X
6A	TB3-5,6	J2U	40	2	16	6			X	X	X	
6B	TB3-7,8	J2L	44	6	17	6			X	X	X	



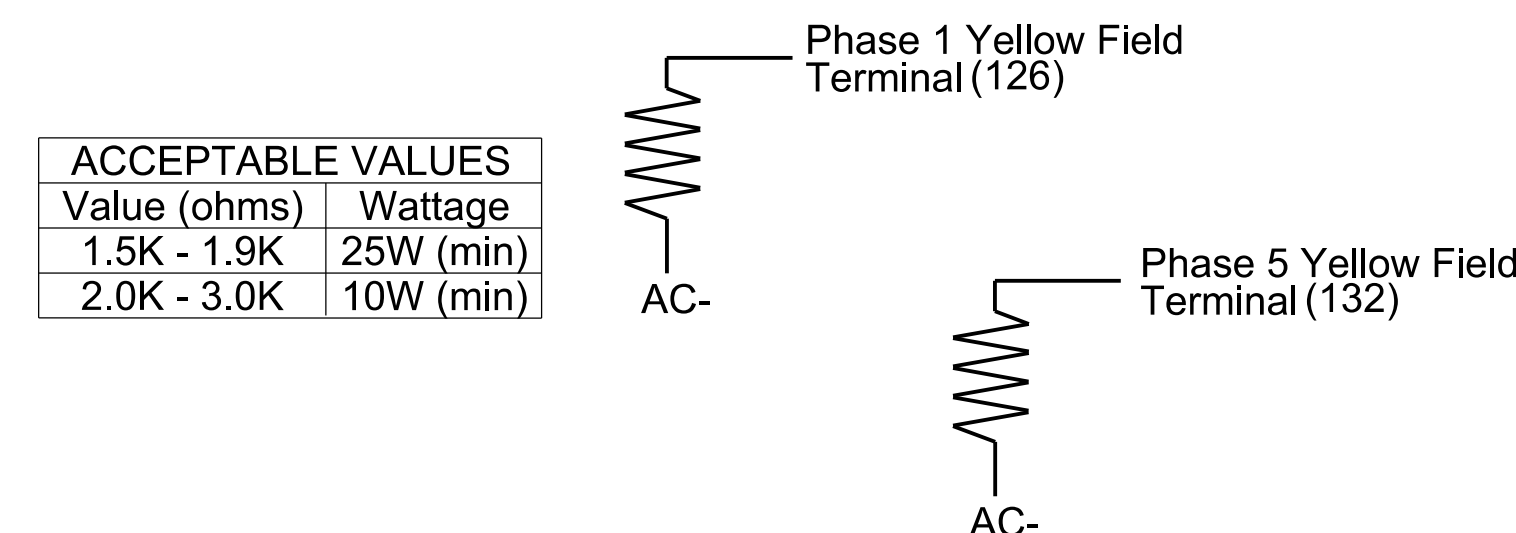
FYA SIGNAL WIRING DETAIL

(wire signal heads as shown)



LOAD RESISTOR INSTALLATION DETAIL

(install resistors as shown)



ACCEPTABLE VALUES	
Value (ohms)	Wattage
1.5K - 1.9K	25W (min)
2.0K - 3.0K	10W (min)

THIS ELECTRICAL DETAIL IS FOR THE SIGNAL DESIGN: 08-0709
 DESIGNED: June 2024
 SEALED: 7/11/2024
 REVISED:

Electrical Detail - Sheet 1 of 2

M M
MOTT MACDONALD
 MOTT MACDONALD I & E, LLC
 930 Main Campus Drive
 Suite 200
 RALEIGH, NC 27606
 License No. F-0669

ELECTRICAL AND PROGRAMMING DETAILS FOR:
 Prepared for:

NC 211
 at
 SR 1238 (Love Grove Church Rd)
 Division 8 Moore County West End
 PLAN DATE: June 2024 REVIEWED BY: R. Mullinax
 PREPARED BY: LD Stouchko REVIEWED BY:
 REVISIONS INIT. DATE

DOCUMENT NOT CONSIDERED FINAL UNLESS ALL SIGNATURES COMPLETED
 SEAL
 NORTH CAROLINA PROFESSIONAL ENGINEER
 SEAL 034437
 LOUI D. STOUCHKO
 Lodi D. Stouchko
 DATE
 SIG. INVENTORY NO. 08-0709