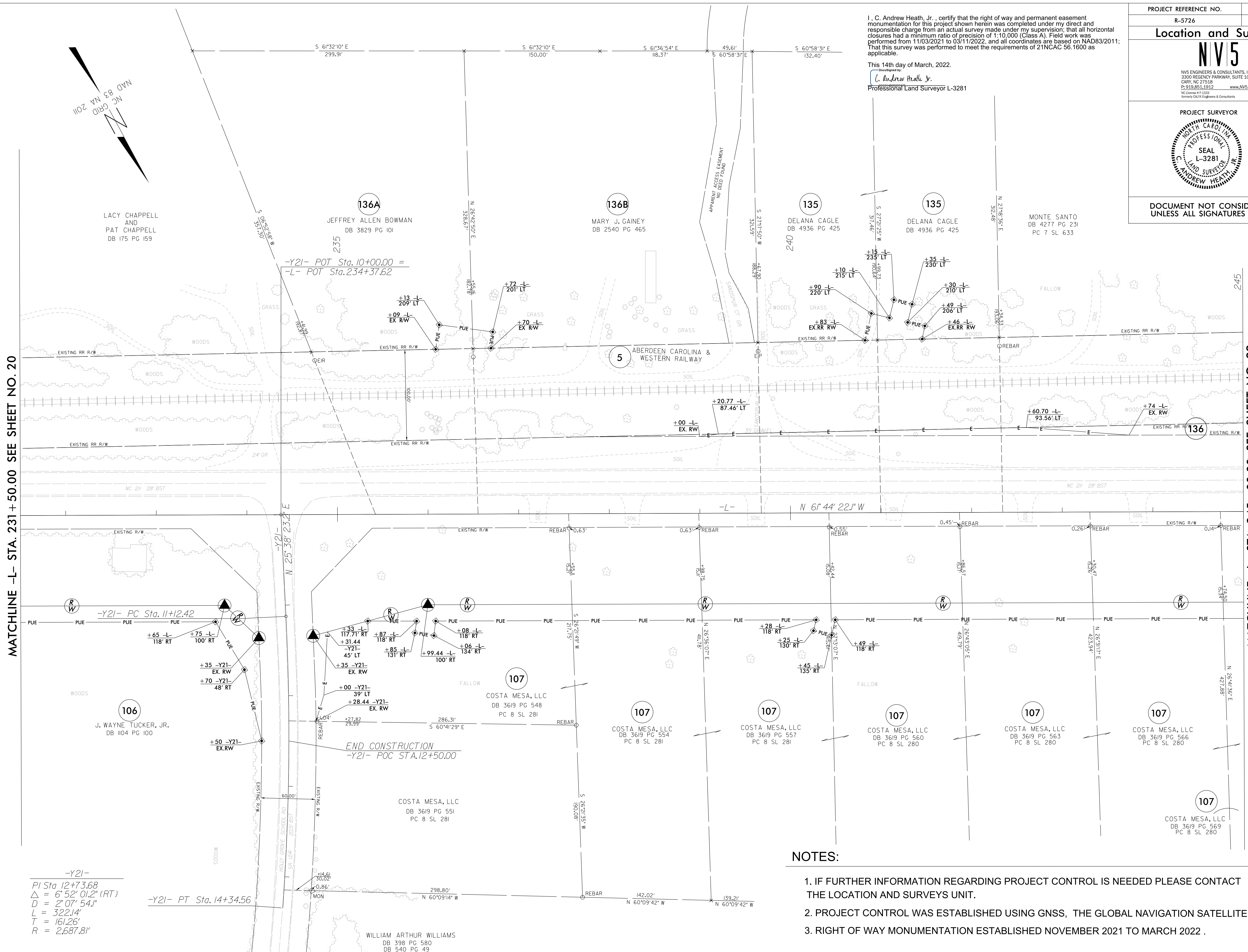


PROJECT REFERENCE NO.	SHEET NO.
R-5726	RW21
Location and Surveys	
NV5	
<small>NVS ENGINEERS & CONSULTANTS, INC. 3300 REGENCY PARKWAY, SUITE 100 CARRI, NC 27518 P: 919.851.1912 www.NV5.com NC License # F-1333 formerly C&V Engineers & Consultants</small>	
PROJECT SURVEYOR	
DOCUMENT NOT CONSIDERED FINAL UNLESS ALL SIGNATURES COMPLETED	

I, C. Andrew Heath, Jr., certify that the right of way and permanent easement monumentation for this project shown herein was completed under my direct and responsible charge from an actual survey made under my supervision; that all horizontal closures had a minimum ratio of precision of 1:10,000 (Class A). Field work was performed from 11/03/2021 to 03/11/2022, and all coordinates are based on NAD83/2011; That this survey was performed to meet the requirements of 21NCAC 56.1600 as applicable.

This 14th day of March, 2022.

Delegated by:
C. Andrew Heath, Jr.
 Professional Land Surveyor L-3281



MATCHLINE -L- STA. 231+50.00 SEE SHEET NO. 20

MATCHLINE -L- STA. 245+00.00 SEE SHEET NO. 22

-Y21-
 PI Sta 12+73.68
 $\Delta = 6' 52'' 01.2''$ (RT)
 $D = 2' 07'' 54.1''$
 $L = 322.14'$
 $T = 161.26'$
 $R = 2,687.81'$

-Y21- PT Sta. 14+34.56

END CONSTRUCTION
-Y21- POC STA. 12+50.00

NOTES:

1. IF FURTHER INFORMATION REGARDING PROJECT CONTROL IS NEEDED PLEASE CONTACT THE LOCATION AND SURVEYS UNIT.
2. PROJECT CONTROL WAS ESTABLISHED USING GNSS, THE GLOBAL NAVIGATION SATELLITE SYSTEM.
3. RIGHT OF WAY MONUMENTATION ESTABLISHED NOVEMBER 2021 TO MARCH 2022 .

REVISIONS

14-MAR-2022 08:59
 C:\p16\cck\2021\2021014_73_SURV\m_sheets\5726_1s_rw21.dgn
 AT: NCCAR-GRANS100

LACY CHAPPELL
 AND
 PAT CHAPPELL
 DB 175 PG 159

136A
 JEFFREY ALLEN BOWMAN
 DB 3829 PG 101

136B
 MARY J. GAINEY
 DB 2540 PG 465

135
 DELANA CAGLE
 DB 4936 PG 425

135
 DELANA CAGLE
 DB 4936 PG 425

MONTE SANTO
 DB 4277 PG 231
 PC 7 SL 633

5
 ABERDEEN CAROLINA &
 WESTERN RAILWAY

106
 J. WAYNE TUCKER, JR.
 DB 1104 PG 100

107
 COSTA MESA, LLC
 DB 3619 PG 548
 PC 8 SL 281

107
 COSTA MESA, LLC
 DB 3619 PG 554
 PC 8 SL 281

107
 COSTA MESA, LLC
 DB 3619 PG 557
 PC 8 SL 281

107
 COSTA MESA, LLC
 DB 3619 PG 560
 PC 8 SL 280

107
 COSTA MESA, LLC
 DB 3619 PG 563
 PC 8 SL 280

107
 COSTA MESA, LLC
 DB 3619 PG 566
 PC 8 SL 280

107
 COSTA MESA, LLC
 DB 3619 PG 569
 PC 8 SL 280

COSTA MESA, LLC
 DB 3619 PG 551
 PC 8 SL 281

WILLIAM ARTHUR WILLIAMS
 DB 398 PG 580
 DB 540 PG 49