

PROJECT REFERENCE NO.	SHEET NO.
R-5726	RW15
Location and Surveys	
NV5	
<small>NVS ENGINEERS & CONSULTANTS, INC. 3300 REGENCY PARKWAY, SUITE 100 CARY, NC 27518 P: 919.851.1912 www.NV5.com NC License # P-2333 Andrew Heath, Jr., Engineer & Consultant</small>	
PROJECT SURVEYOR	
DOCUMENT NOT CONSIDERED FINAL UNLESS ALL SIGNATURES COMPLETED	

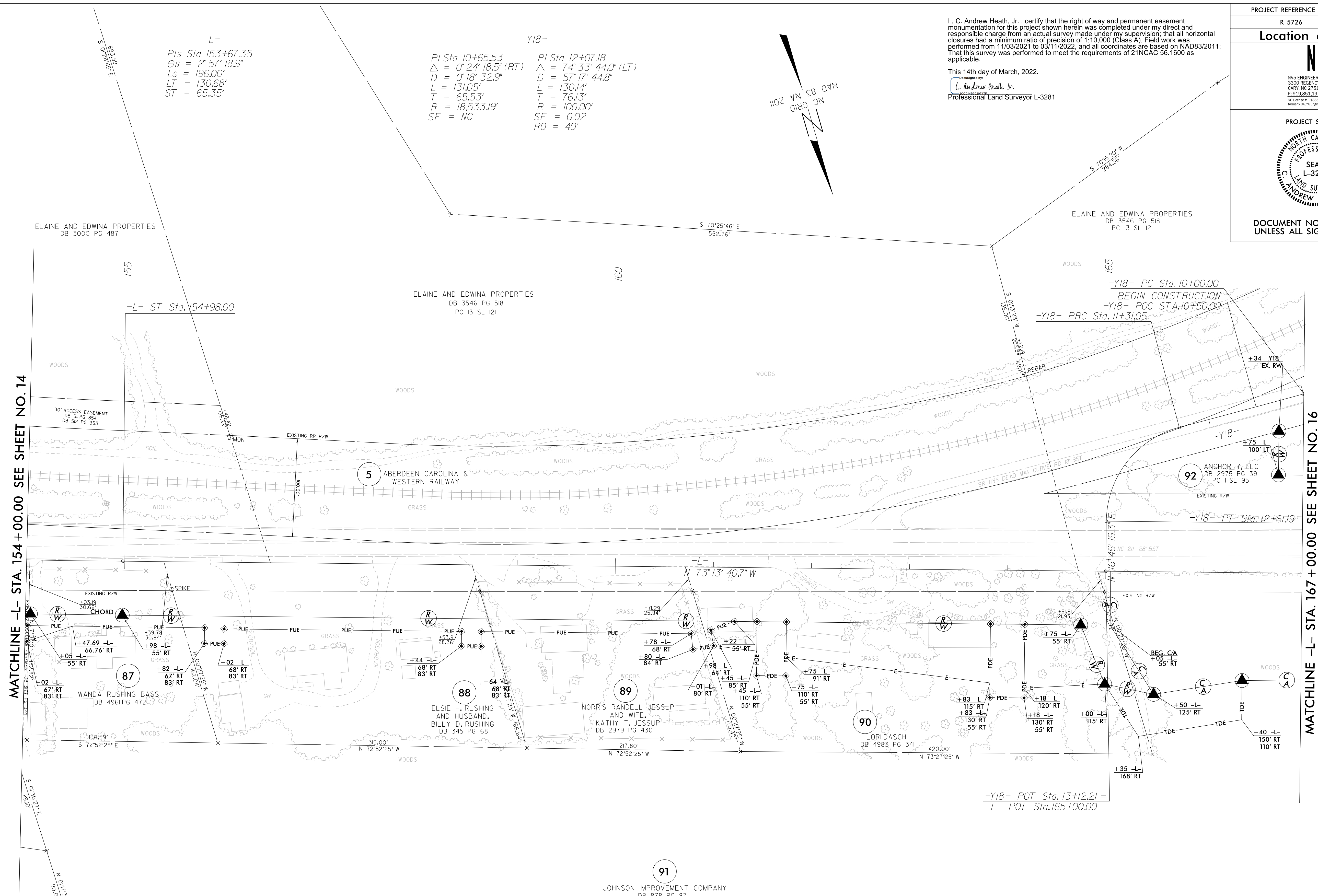
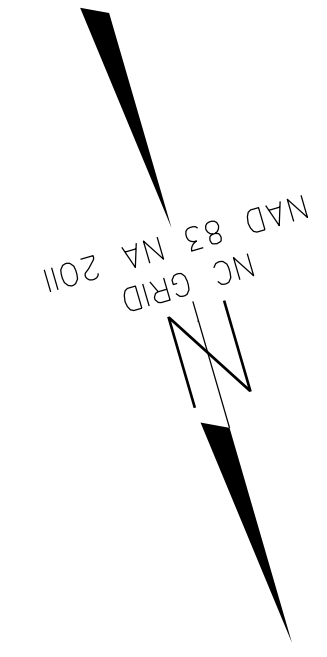
I, C. Andrew Heath, Jr., certify that the right of way and permanent easement monumentation for this project shown herein was completed under my direct and responsible charge from an actual survey made under my supervision; that all horizontal closures had a minimum ratio of precision of 1:10,000 (Class A). Field work was performed from 11/03/2021 to 03/11/2022, and all coordinates are based on NAD83/2011; That this survey was performed to meet the requirements of 21NCAC 56.1600 as applicable.

This 14th day of March, 2022.

Designed by:
C. Andrew Heath, Jr.
 Professional Land Surveyor L-3281

-L-
 PIs Sta 153+67.35
 $\Theta_s = 2^\circ 57' 18.9''$
 $L_s = 196.00'$
 $LT = 130.68'$
 $ST = 65.35'$

-Y18-
 PI Sta 10+65.53 PI Sta 12+07.18
 $\Delta = 0^\circ 24' 18.5''$ (RT) $\Delta = 74^\circ 33' 44.0''$ (LT)
 $D = 0^\circ 18' 32.9''$ $D = 57^\circ 17' 44.8''$
 $L = 131.05'$ $L = 130.14'$
 $T = 65.53'$ $T = 76.13'$
 $R = 18,533.19'$ $R = 100.00'$
 $SE = NC$ $SE = 0.02$
 $RO = 40'$



MATCHLINE -L- STA. 154+00.00 SEE SHEET NO. 14

MATCHLINE -L- STA. 167+00.00 SEE SHEET NO. 16

REVISIONS

14-MAR-2022 08:34
 G:\Projects\2021\2021014_73_SURV\w_sheets\5726\1s_rw15.dgn
 AT:\CCAR-CRANS100
 scott@cranford

91
 JOHNSON IMPROVEMENT COMPANY
 DB 878 PG 87

NOTES:

1. IF FURTHER INFORMATION REGARDING PROJECT CONTROL IS NEEDED PLEASE CONTACT THE LOCATION AND SURVEYS UNIT.
2. PROJECT CONTROL WAS ESTABLISHED USING GNSS, THE GLOBAL NAVIGATION SATELLITE SYSTEM.
3. RIGHT OF WAY MONUMENTATION ESTABLISHED NOVEMBER 2021 TO MARCH 2022.