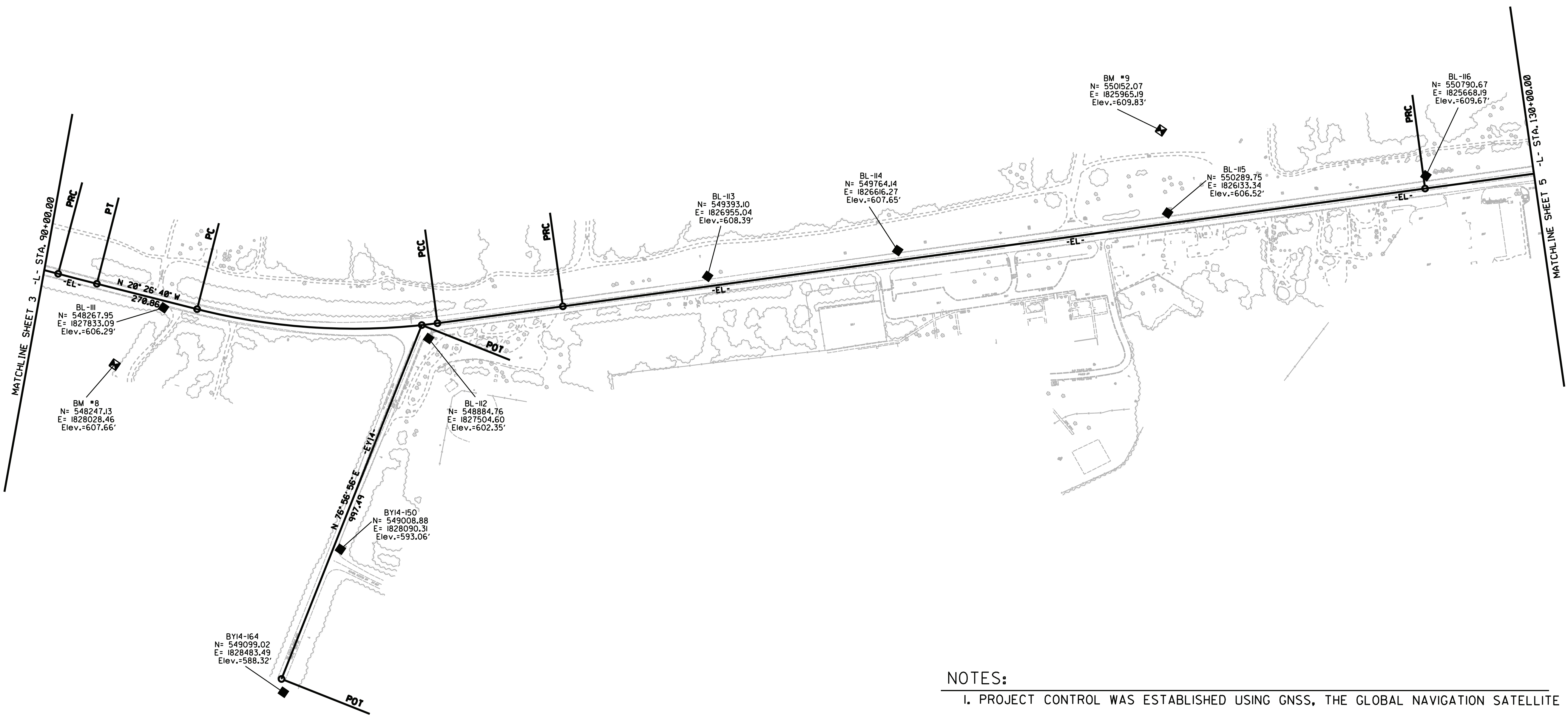
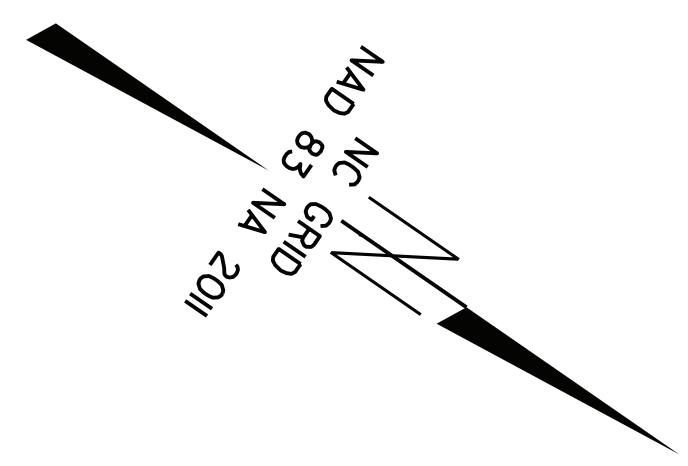


SURVEY CONTROL SHEET

W/ EXISTING CENTERLINE ALIGNMENTS PRIOR TO CONSTRUCTION



- NOTES:**
1. PROJECT CONTROL WAS ESTABLISHED USING GNSS, THE GLOBAL NAVIGATION SATELLITE SYSTEM.
 2. THE SURVEY CONTROL DATA FOR THIS PROJECT HAS BEEN COMPILED FROM VARIOUS SOURCES. IF FURTHER INFORMATION REGARDING PROJECT CONTROL IS NEEDED, PLEASE CONTACT THE LOCATION AND SURVEYS UNIT.

03-OCT-2018 14:11 P:\Projects\NC095\006MC_NCDOT-Location & Survey 2017-2018\21-r5726 NC211\CAD\Right of Way Sheets\C Series - RW2C\5726-1s-rw2c-4.cdw.dgn
 6/2/19