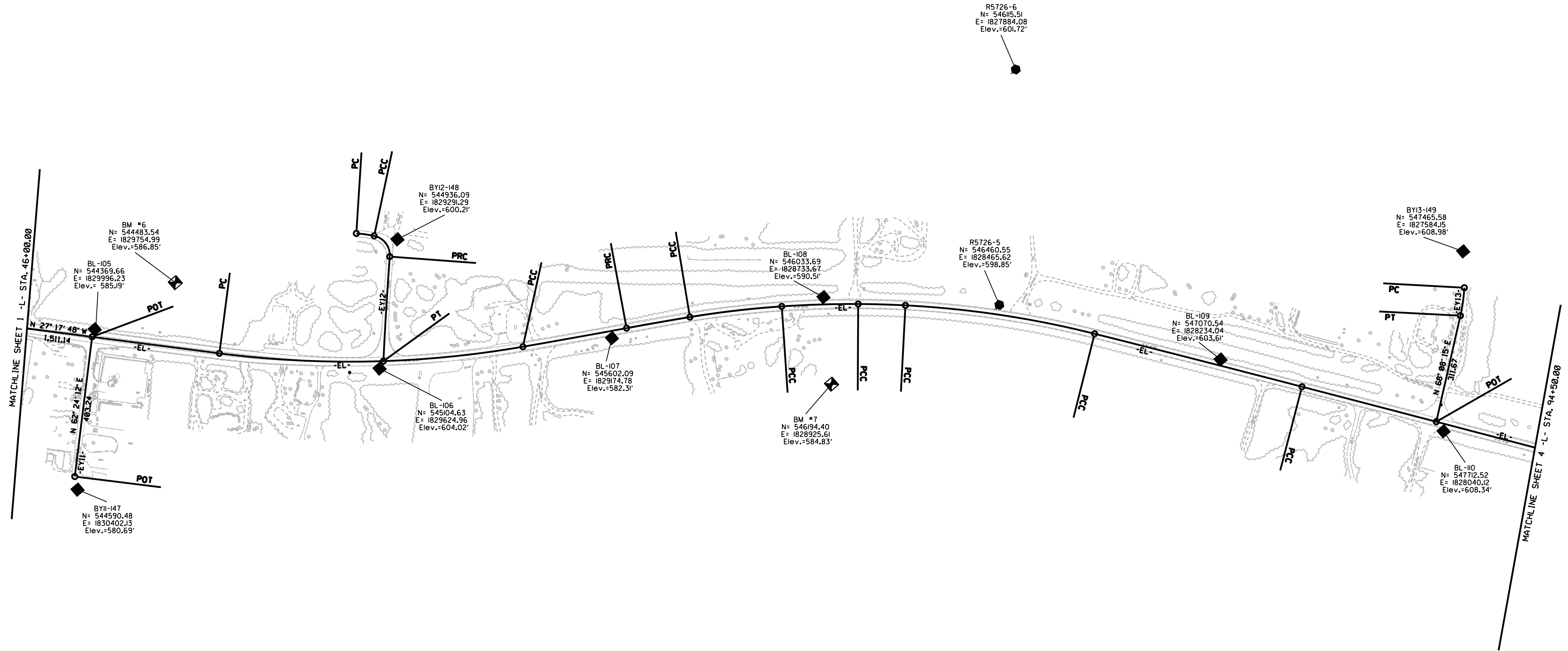
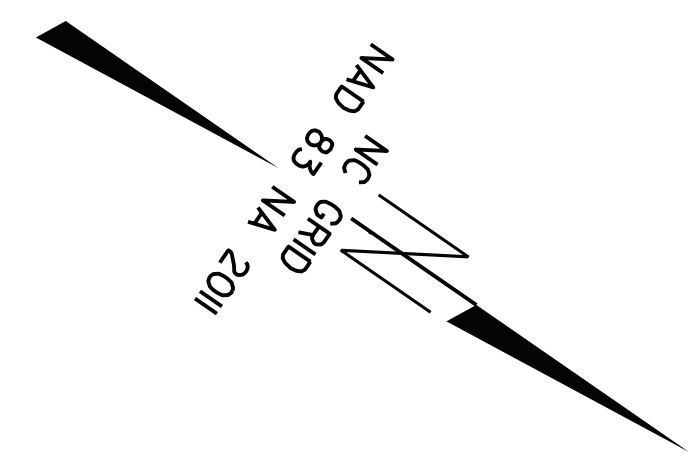


SURVEY CONTROL SHEET

W/ EXISTING CENTERLINE ALIGNMENTS PRIOR TO CONSTRUCTION



- NOTES:**
- PROJECT CONTROL WAS ESTABLISHED USING GNSS, THE GLOBAL NAVIGATION SATELLITE SYSTEM.
 - THE SURVEY CONTROL DATA FOR THIS PROJECT HAS BEEN COMPILED FROM VARIOUS SOURCES. IF FURTHER INFORMATION REGARDING PROJECT CONTROL IS NEEDED, PLEASE CONTACT THE LOCATION AND SURVEYS UNIT.

12-OCT-2018 07:25
 C:\Users\pnc\Documents\Projects\NC095\095MC NCDOT-Location & Survey 2017-2018\21-r-5726 NC211\CAD\Right of Way Sheets\C Series - RW2C\5726-1s-rw2c-3.cdw.dgn
 6/2/19