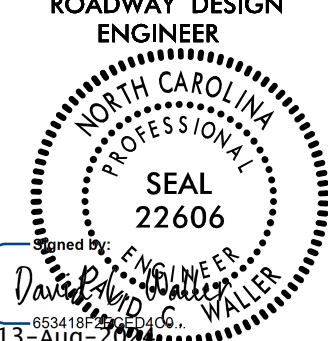
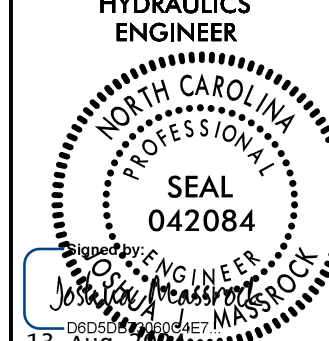
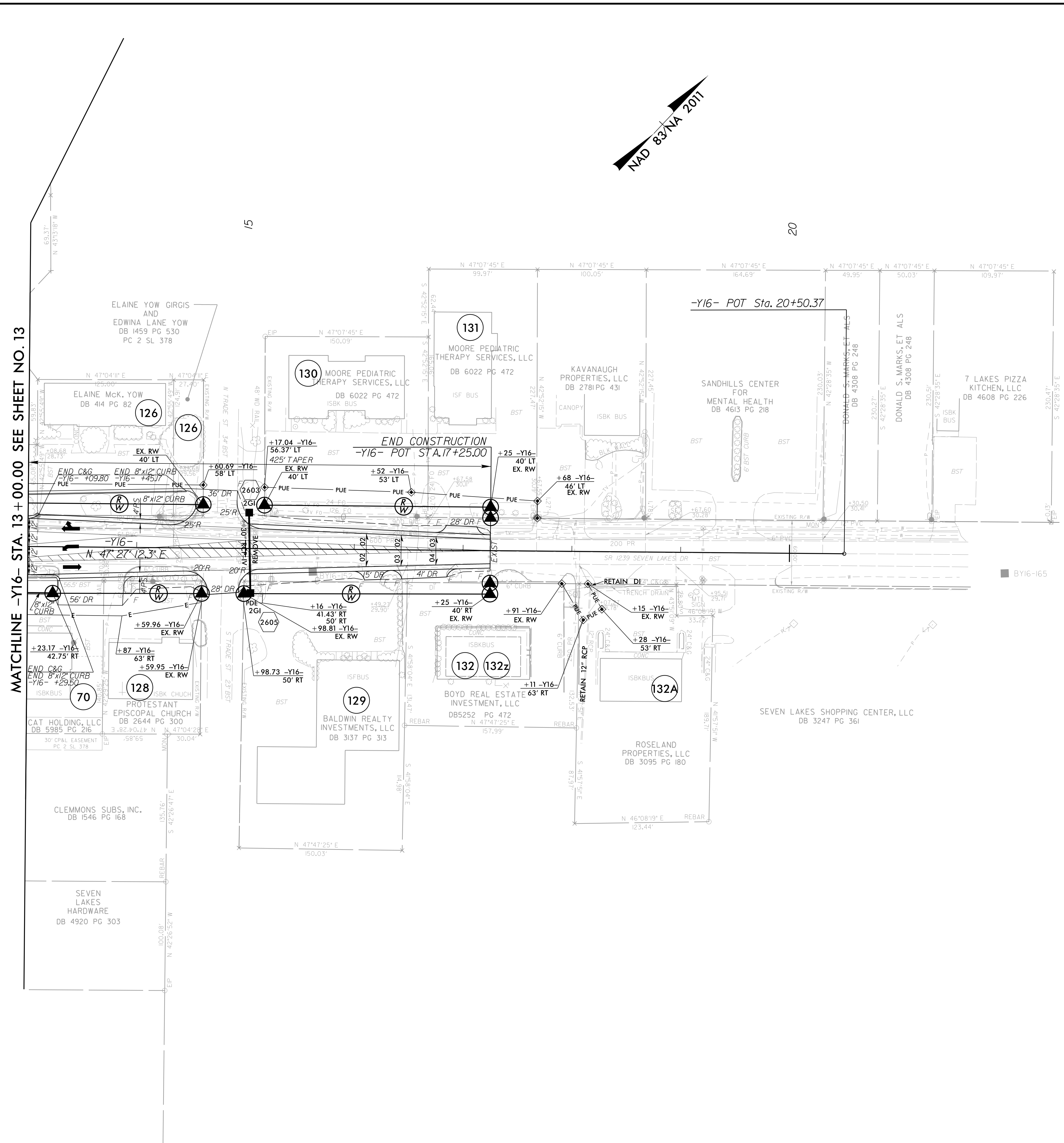


8/17/99

| | |
|---|---|
| PROJECT REFERENCE NO. <i>R-5726</i> | SHEET NO. 26 |
| ROADWAY DESIGN ENGINEER MOTT MACDONALD & E, LLC 13-Aug-2011 | HYDRAULICS ENGINEER MOTT MACDONALD & E, LLC 13-Aug-2011 |
|   | |
| <p>DOCUMENT NOT CONSIDERED FINAL UNLESS ALL SIGNATURES COMPLETED</p> | |
| <p>Prepared in the Office of: M MOTT MACDONALD & E, LLC 930 Main Campus Drive, Suite 200 Raleigh, NC 27606 www.mottmac.com</p> | |
| <p>HDR HDR Engineering, Inc. of the Carolinas 555 Fayetteville St., Suite 900 Raleigh, N.C. 27601 N.C.B.E.L.S. License Number: F-0116</p> | |
| <p>FOR -Y16- PROFILE SEE SHEET 41 FOR DITCH DETAILS SEE SHEET 2D-1</p> | |

MATCHLINE -Y16- STA. 13+00.00 SEE SHEET NO. 13



ALL DRIVEWAY RADII ARE 10' UNLESS OTHERWISE NOTED ON PLANS.

7/29/2024
R:\Projects\5726\Proj\5726_rdy_psh26.dgn
MAM 7/24/24