

8.17.7.99

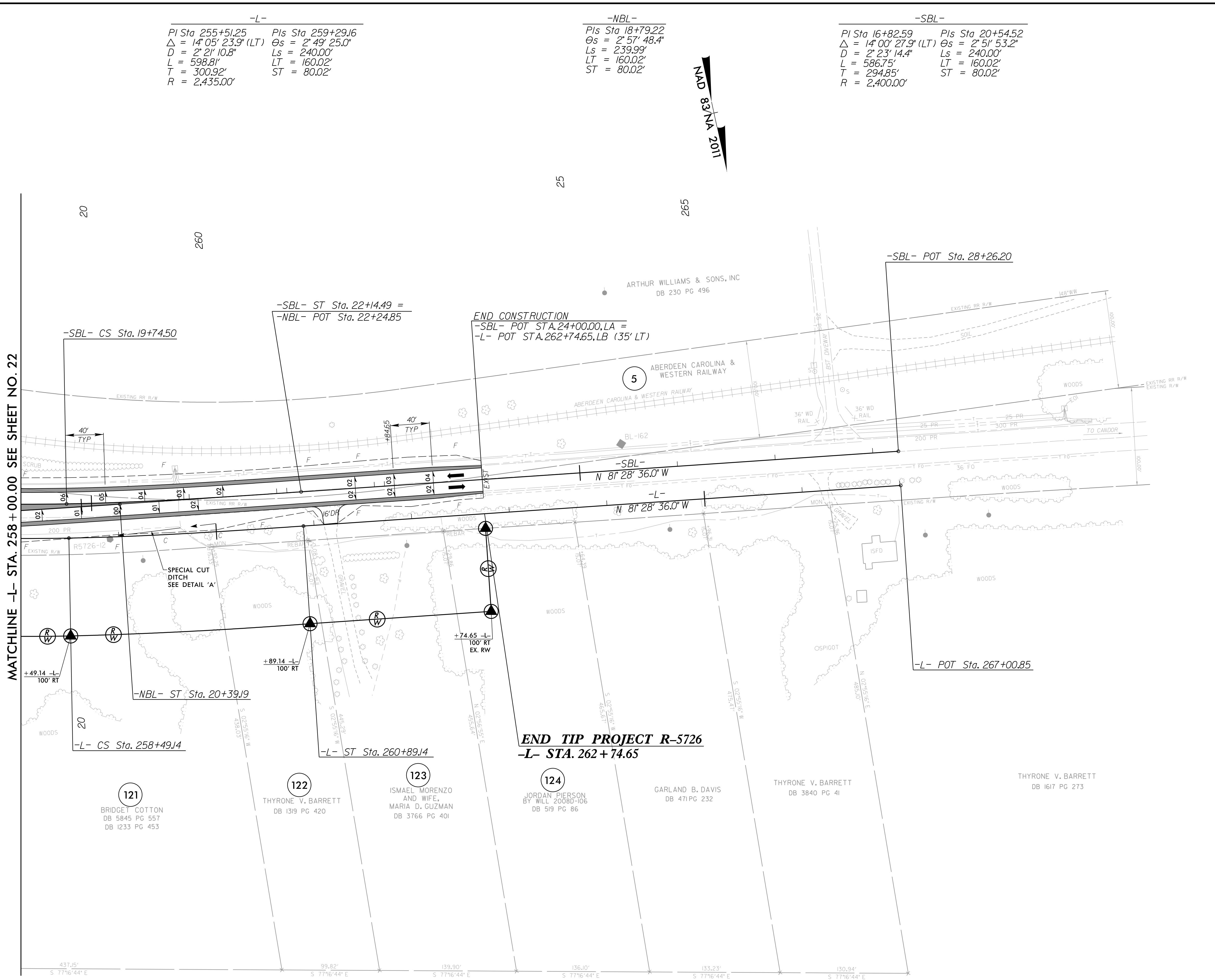
-L-  
 Pls Sta 255+51.25 Pls Sta 259+29.16  
 $\Delta = 14^{\circ} 05' 23.9"$  (LT)  $\Theta_s = 2^{\circ} 49' 25.0"$   
 $D = 2^{\circ} 21' 10.8"$   $L_s = 240.00'$   
 $L = 598.81'$   $LT = 160.02'$   
 $T = 300.92'$   $ST = 80.02'$   
 $R = 2,435.00'$

-NBL-  
 Pls Sta 18+79.22  
 $\Theta_s = 2^{\circ} 57' 48.4"$   
 $L_s = 239.99'$   
 $LT = 160.02'$   
 $ST = 80.02'$

-SBL-  
 Pls Sta 16+82.59 Pls Sta 20+54.52  
 $\Delta = 14^{\circ} 00' 27.9"$  (LT)  $\Theta_s = 2^{\circ} 51' 53.2"$   
 $D = 2^{\circ} 23' 14.4"$   $L_s = 240.00'$   
 $L = 586.75'$   $LT = 160.02'$   
 $T = 294.85'$   $ST = 80.02'$   
 $R = 2,400.00'$

NAD 83/NA 2011

MATCHLINE -L- STA. 258 + 00.00 SEE SHEET NO. 22



PROJECT REFERENCE NO. <b>R-5726</b>	SHEET NO. <b>23</b>
ROADWAY DESIGN ENGINEER MOTT MACDONALD & E, LLC SEAL 22606 13-Aug-2011	HYDRAULICS ENGINEER MOTT MACDONALD & E, LLC SEAL 042084 13-Aug-2011
<b>DOCUMENT NOT CONSIDERED FINAL UNLESS ALL SIGNATURES COMPLETED</b>	
Prepared in the Office of: <b>M</b> MOTT MACDONALD & E, LLC 930 Main Campus Drive, Suite 200 Raleigh, NC 27606 www.mottmac.com	
<b>HDR</b> HDR Engineering, Inc. of the Carolinas 555 Fayetteville St., Suite 900 Raleigh, N.C. 27601 N.C.B.E.L.S. License Number: F-0116	
FOR -L- PROFILE SEE SHEET 36 FOR -NBL- PROFILE SEE SHEET 37 FOR -SBL- PROFILE SEE SHEET 37 FOR DITCH DETAILS SEE SHEET 2D-1	

7/29/2024  
R:\Projects\5726\Proj\5726\_rdy\_psh23.dgn  
VAL 7/24/24

ALL DRIVEWAY RADII ARE 10' UNLESS OTHERWISE NOTED ON PLANS.