

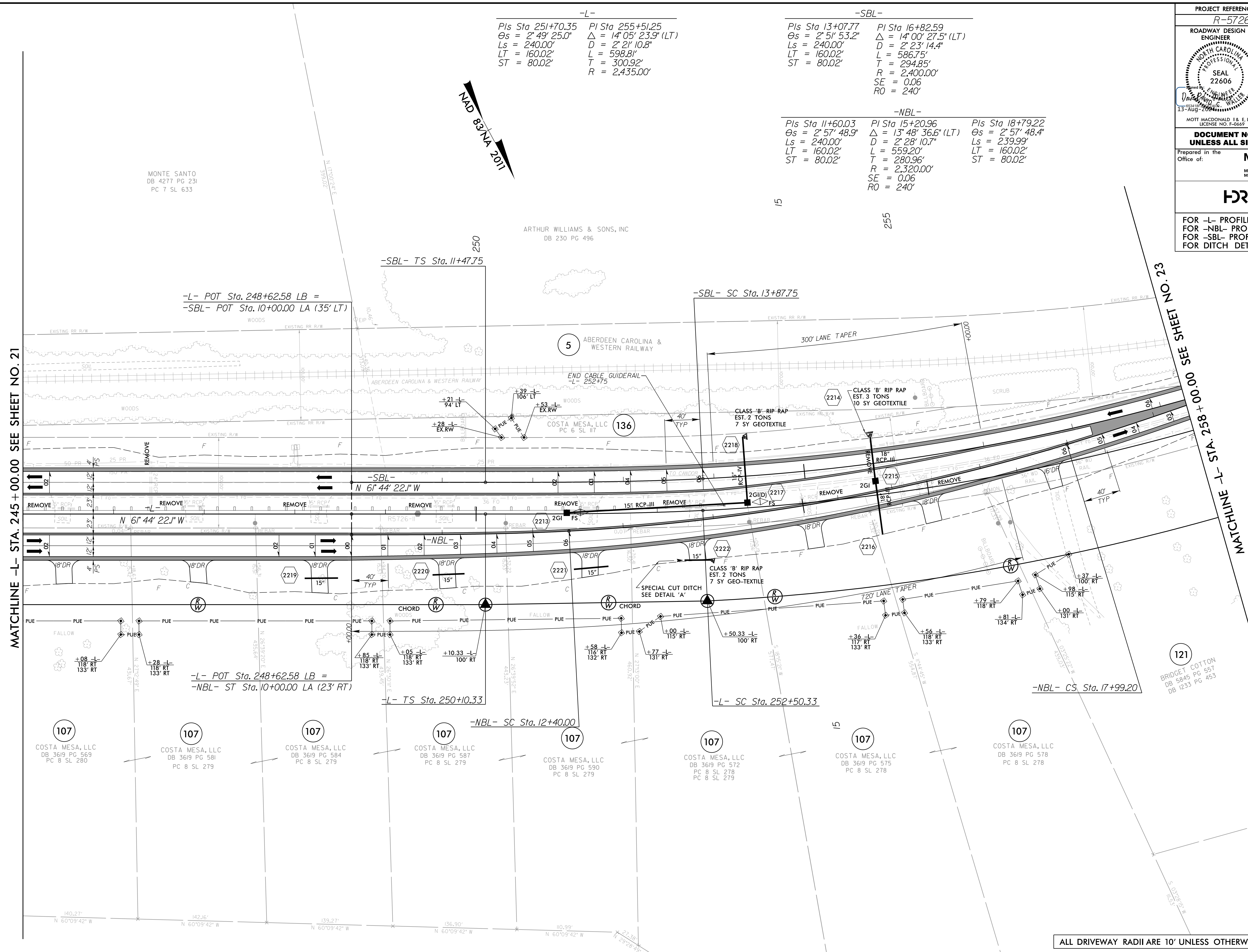
8/17/99

PROJECT REFERENCE NO. <b>R-5726</b>		SHEET NO. <b>22</b>	
ROADWAY DESIGN ENGINEER MOTT MACDONALD I & E, LLC LICENSE NO. F-0669		HYDRAULICS ENGINEER MOTT MACDONALD I & E, LLC LICENSE NO. F-0116	
<b>DOCUMENT NOT CONSIDERED FINAL UNLESS ALL SIGNATURES COMPLETED</b>			
Prepared in the Office of: <b>M M</b> MOTT MACDONALD I & E, LLC 930 Main Campus Drive, Suite 200 Raleigh, NC 27606 www.mottmac.com			
<b>HDR</b> HDR Engineering, Inc. of the Carolinas 555 Fayetteville St., Suite 900 Raleigh, N.C. 27601 N.C.E.L.S. License Number: F-0116			
FOR -L- PROFILE SEE SHEET 36 FOR -NBL- PROFILE SEE SHEET 37 FOR -SBL- PROFILE SEE SHEET 37 FOR DITCH DETAILS SEE SHEET 2D-1			

**-L-**  
 Pls Sta 251+70.35 PI Sta 255+51.25  
 $\theta_s = 2^\circ 49' 25.0''$   $\Delta = 14^\circ 05' 23.9''$  (LT)  
 $L_s = 240.00'$   $D = 2^\circ 21' 10.8''$   
 $LT = 160.02'$   $L = 598.81'$   
 $ST = 80.02'$   $T = 300.92'$   
 $R = 2,435.00'$

**-SBL-**  
 Pls Sta 13+07.77 PI Sta 16+82.59  
 $\theta_s = 2^\circ 51' 53.2''$   $\Delta = 14^\circ 00' 27.5''$  (LT)  
 $L_s = 240.00'$   $D = 2^\circ 23' 14.4''$   
 $LT = 160.02'$   $L = 586.75'$   
 $ST = 80.02'$   $T = 294.85'$   
 $R = 2,400.00'$   
 $SE = 0.06$   
 $RO = 240'$

**-NBL-**  
 Pls Sta 11+60.03 PI Sta 15+20.96 PI Sta 18+79.22  
 $\theta_s = 2^\circ 57' 48.9''$   $\Delta = 13^\circ 48' 36.6''$  (LT)  $\theta_s = 2^\circ 57' 48.4''$   
 $L_s = 240.00'$   $D = 2^\circ 28' 10.7''$   $L_s = 239.99'$   
 $LT = 160.02'$   $L = 559.20'$   $LT = 160.02'$   
 $ST = 80.02'$   $T = 280.96'$   $ST = 80.02'$   
 $R = 2,320.00'$   
 $SE = 0.06$   
 $RO = 240'$



MATCHLINE -L- STA. 245 + 00.00 SEE SHEET NO. 21

MATCHLINE -L- STA. 258 + 00.00 SEE SHEET NO. 23

7/29/2024  
R:\Projects\4\N Proj\5726\_rdy\_psh22.dgn  
VAL 78449

ALL DRIVEWAY RADII ARE 10' UNLESS OTHERWISE NOTED ON PLANS.