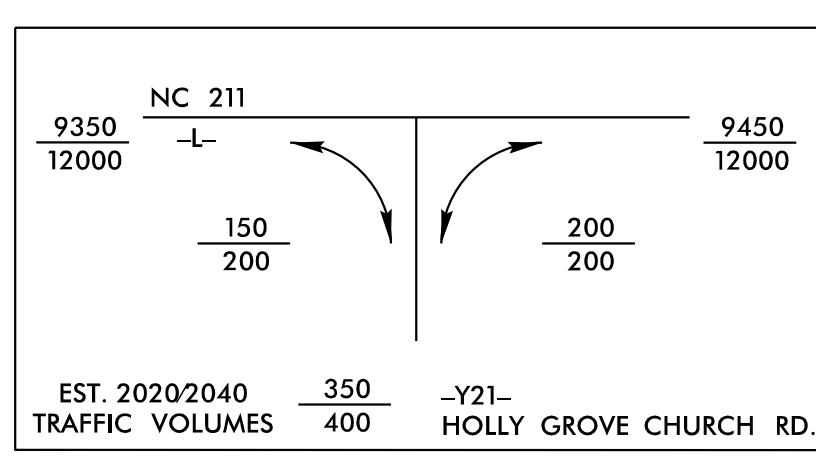


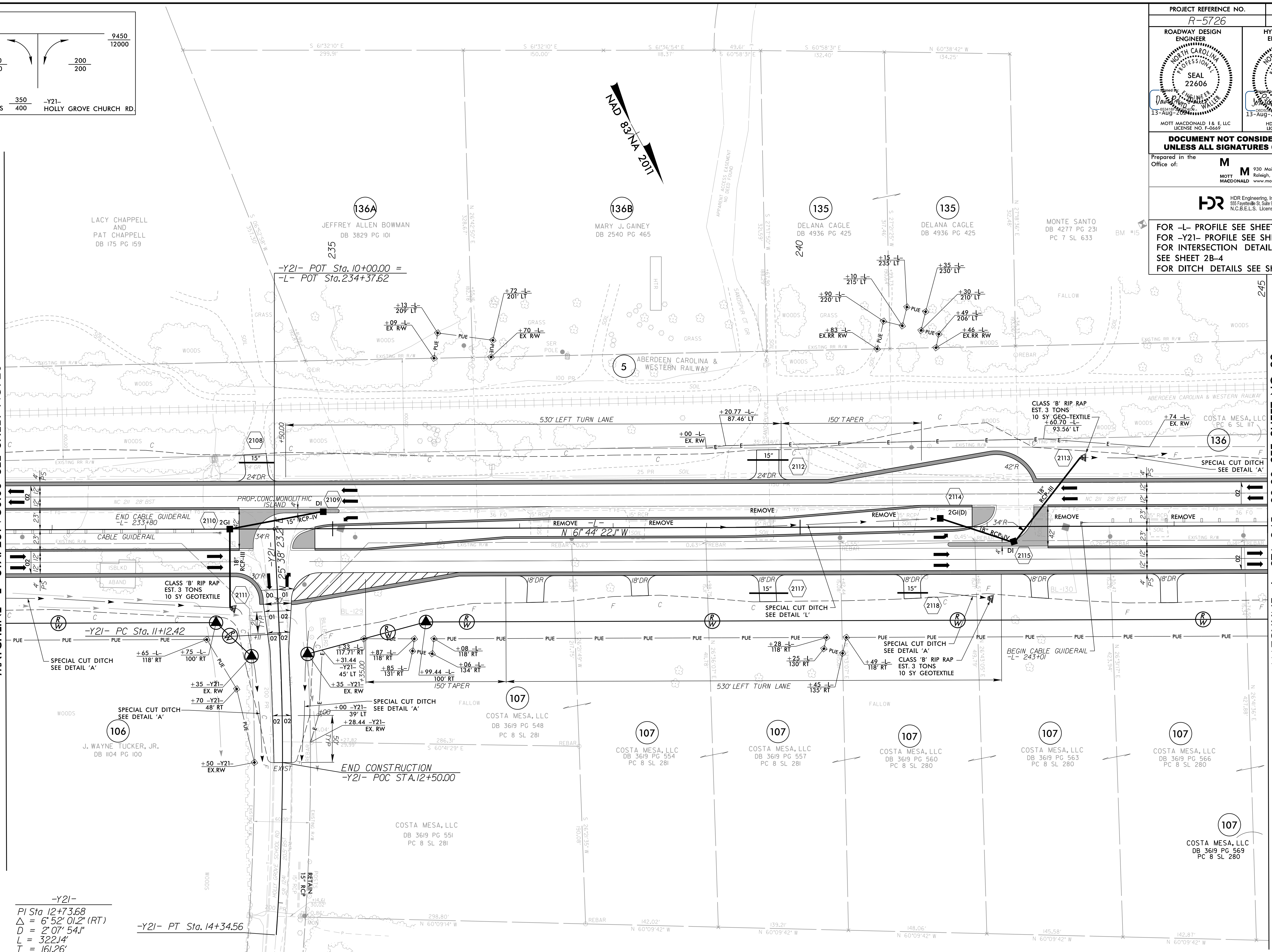
8/17/99



PROJECT REFERENCE NO. R-5726	SHEET NO. 21
ROADWAY DESIGN ENGINEER DAVID P. WALKER SEAL 22606 13-AUG-2024	HYDRAULICS ENGINEER JOHN G. WALKER SEAL 042084 13-AUG-2024
MOTT MACDONALD I & E, LLC LICENSE NO. F-0669	
MOTT MACDONALD I & E, LLC LICENSE NO. F-0116	
DOCUMENT NOT CONSIDERED FINAL UNLESS ALL SIGNATURES COMPLETED	
Prepared in the Office of: M MOTT MACDONALD	
MOTT MACDONALD I & E, LLC 930 Main Campus Drive, Suite 200 Raleigh, NC 27606 www.mottmac.com	
HDR HDR Engineering, Inc. of the Carolinas 555 Fayetteville St., Suite 900 Raleigh, N.C. 27601 N.C.E.L.S. License Number: F-0116	
FOR -L- PROFILE SEE SHEET 35 FOR -Y21- PROFILE SEE SHEET 42 FOR INTERSECTION DETAIL SEE SHEET 2B-4 FOR DITCH DETAILS SEE SHEET 2D-1	

MATCHLINE -L- STA. 231 + 50.00 SEE SHEET NO. 20

MATCHLINE -L- STA. 245 + 00.00 SEE SHEET NO. 22



-Y21-
PI Sta 12+73.68
 $\Delta = 6' 52'' 01.2'' (RT)$
 $D = 2' 07'' 54.1''$
 $L = 322.14'$
 $T = 161.26'$
 $R = 2,687.8'$

-Y21- PT Sta. 14+34.56

END CONSTRUCTION
-Y21- POC STA. 12+50.00

ALL DRIVEWAY RADII ARE 10' UNLESS OTHERWISE NOTED ON PLANS.

7/29/2024
R:\Projects\4\Proj\5726.r\dj_psh21.dgn
7/29/24