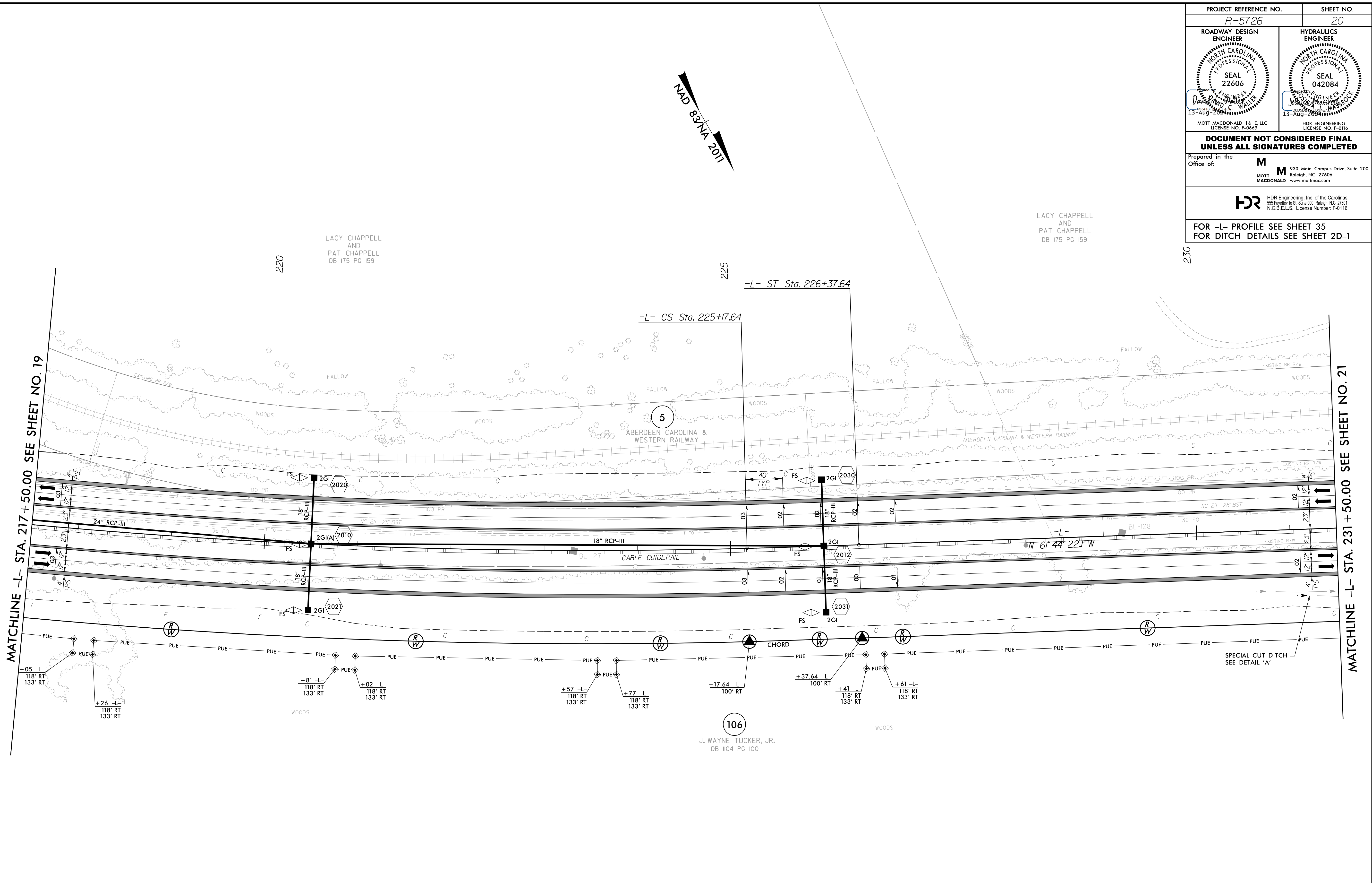


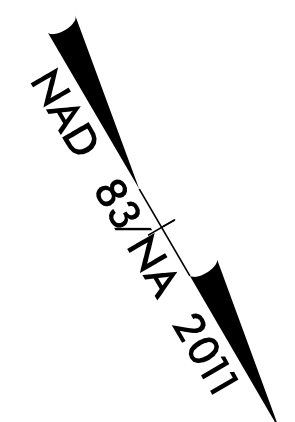
8/17/99

PROJECT REFERENCE NO. <i>R-5726</i>	SHEET NO. 20
ROADWAY DESIGN ENGINEER SEAL 22606 <i>David P. Walker</i> 13-Aug-2011 MOTT MACDONALD I & E, LLC LICENSE NO. F-06697	HYDRAULICS ENGINEER SEAL 042084 <i>John G. Walker</i> 13-Aug-2011 HDR ENGINEERING LICENSE NO. F-0116
DOCUMENT NOT CONSIDERED FINAL UNLESS ALL SIGNATURES COMPLETED	
Prepared in the Office of: M MOTT MACDONALD	
HDR HDR Engineering, Inc. of the Carolinas 555 Fayetteville St., Suite 900 Raleigh, N.C. 27601 N.C.B.E.L.S. License Number: F-0116	
FOR -L- PROFILE SEE SHEET 35 FOR DITCH DETAILS SEE SHEET 2D-1	



MATCHLINE -L- STA. 217 + 50.00 SEE SHEET NO. 19

MATCHLINE -L- STA. 231 + 50.00 SEE SHEET NO. 21



-L-

PI Sta 220+57.12	PIs Sta 225+57.64
$\Delta = 8^{\circ} 07' 56.7''$ (LT)	$\Theta_s = 0^{\circ} 31' 44.0''$
$D = 0^{\circ} 52' 53.3''$	$L_s = 120.00'$
$L = 922.59'$	$LT = 80.00'$
$T = 462.07'$	$ST = 40.00'$
$R = 6,500.00'$	
$SE = 0.03$	
$RO = 120'$	

ALL DRIVEWAY RADII ARE 10' UNLESS OTHERWISE NOTED ON PLANS.

7/29/2024
R:\Projects\4\Proj\5726_rdy_psh20.dgn
VAN 78449