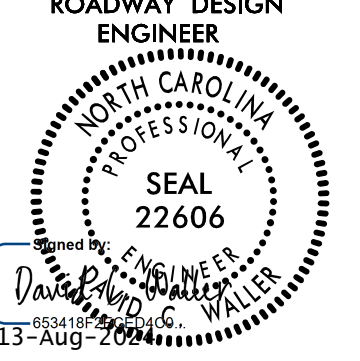
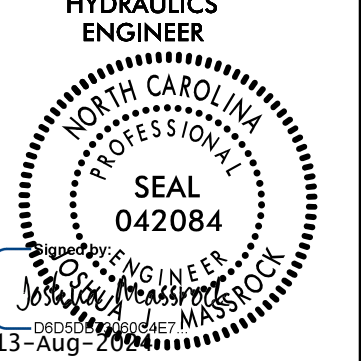

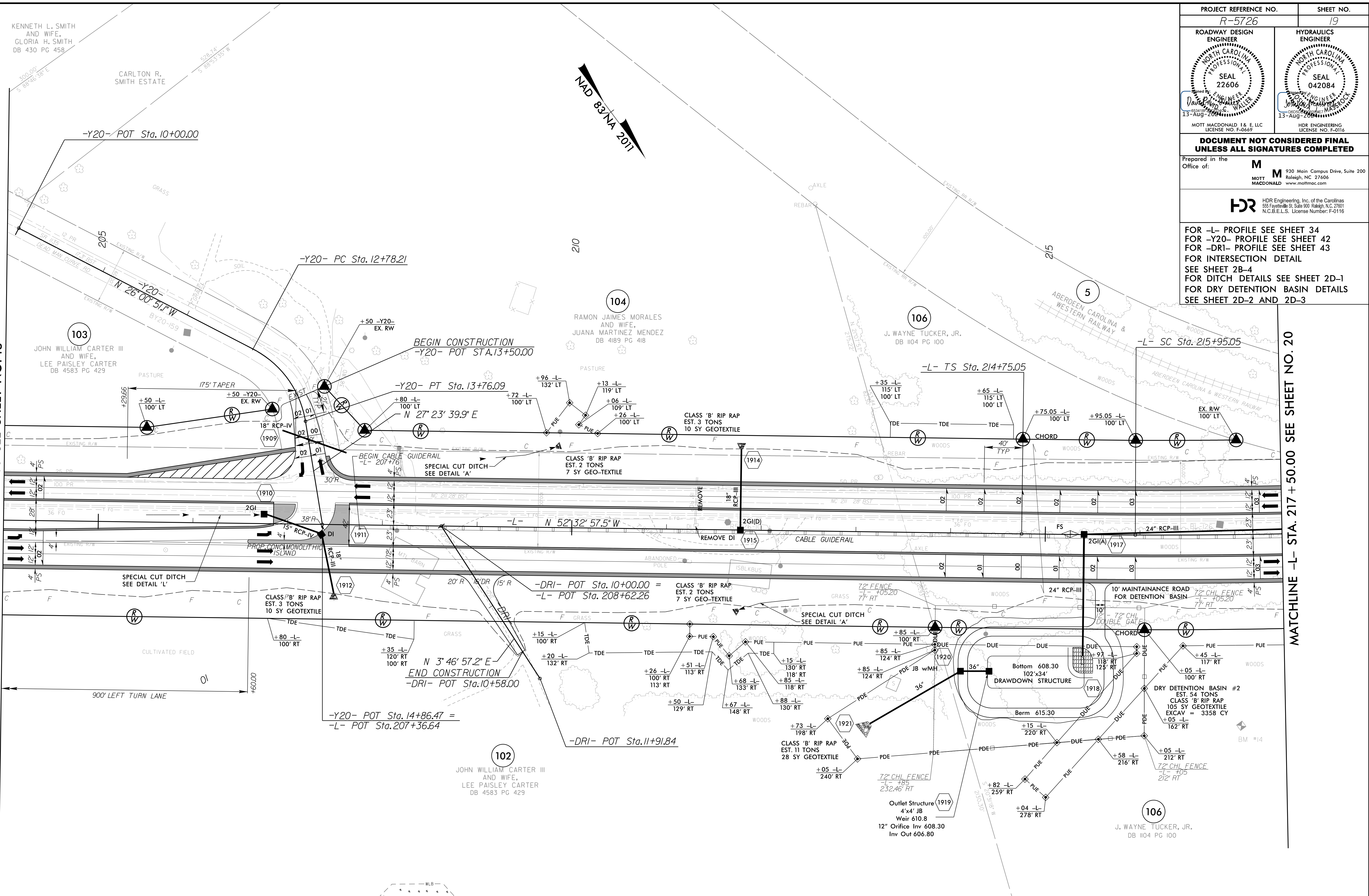


PROJECT REFERENCE NO. R-5726		SHEET NO. 19	
ROADWAY DESIGN ENGINEER MOTT MACDONALD & E, LLC 13-Aug-2024		HYDRAULICS ENGINEER MOTT MACDONALD & E, LLC 13-Aug-2024	
 MOTT MACDONALD & E, LLC LICENSE NO. F-06697		 MOTT MACDONALD & E, LLC LICENSE NO. F-0116	
DOCUMENT NOT CONSIDERED FINAL UNLESS ALL SIGNATURES COMPLETED			
Prepared in the Office of: M MOTT MACDONALD & E, LLC 930 Main Campus Drive, Suite 200 Raleigh, NC 27606 www.mottmac.com			
 HDR Engineering, Inc. of the Carolinas 555 Fayetteville St., Suite 900 Raleigh, N.C. 27601 N.C.E.L.S. License Number: F-0116			
FOR -L- PROFILE SEE SHEET 34 FOR -Y20- PROFILE SEE SHEET 42 FOR -DRI- PROFILE SEE SHEET 43 FOR INTERSECTION DETAIL SEE SHEET 2B-4 FOR DITCH DETAILS SEE SHEET 2D-1 FOR DRY DETENTION BASIN DETAILS SEE SHEET 2D-2 AND 2D-3			

MATCHLINE -L- STA. 204+00.00 SEE SHEET NO. 18

MATCHLINE -L- STA. 217+50.00 SEE SHEET NO. 20



-L-	-Y20-
PI Sta 215+55.05	PI Sta 13+31.03
θs = 0° 31' 44.0"	Δ = 53° 24' 31.0" (RT)
Ls = 120.00'	Δ = 8° 07' 56.7" (LT)
LT = 80.00'	D = 0° 52' 53.3"
ST = 40.00'	L = 922.59'
	T = 462.07'
	R = 6,500.00'
	SE = 0.03
	RO = 120'

ALL DRIVEWAY RADII ARE 10' UNLESS OTHERWISE NOTED ON PLANS.

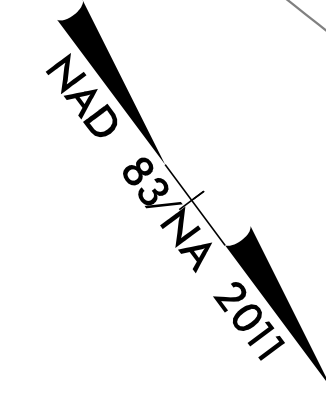
8/17/24

R:\Projects\5726\Proj\5726_rdy_psh19.dgn

KENNETH L. SMITH AND WIFE, GLORIA H. SMITH DB 430 PG 458

CARLTON R. SMITH ESTATE

JOHN WILLIAM CARTER III AND WIFE, LEE PAISLEY CARTER DB 4583 PG 429



103

104

106

102

106