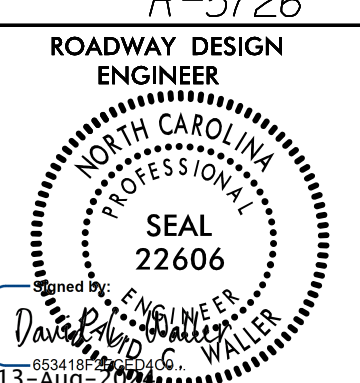
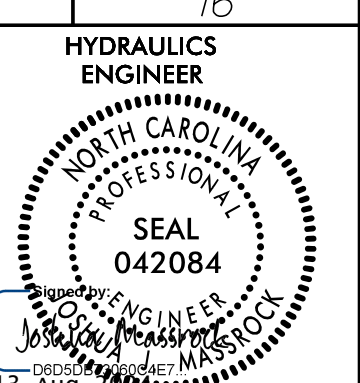
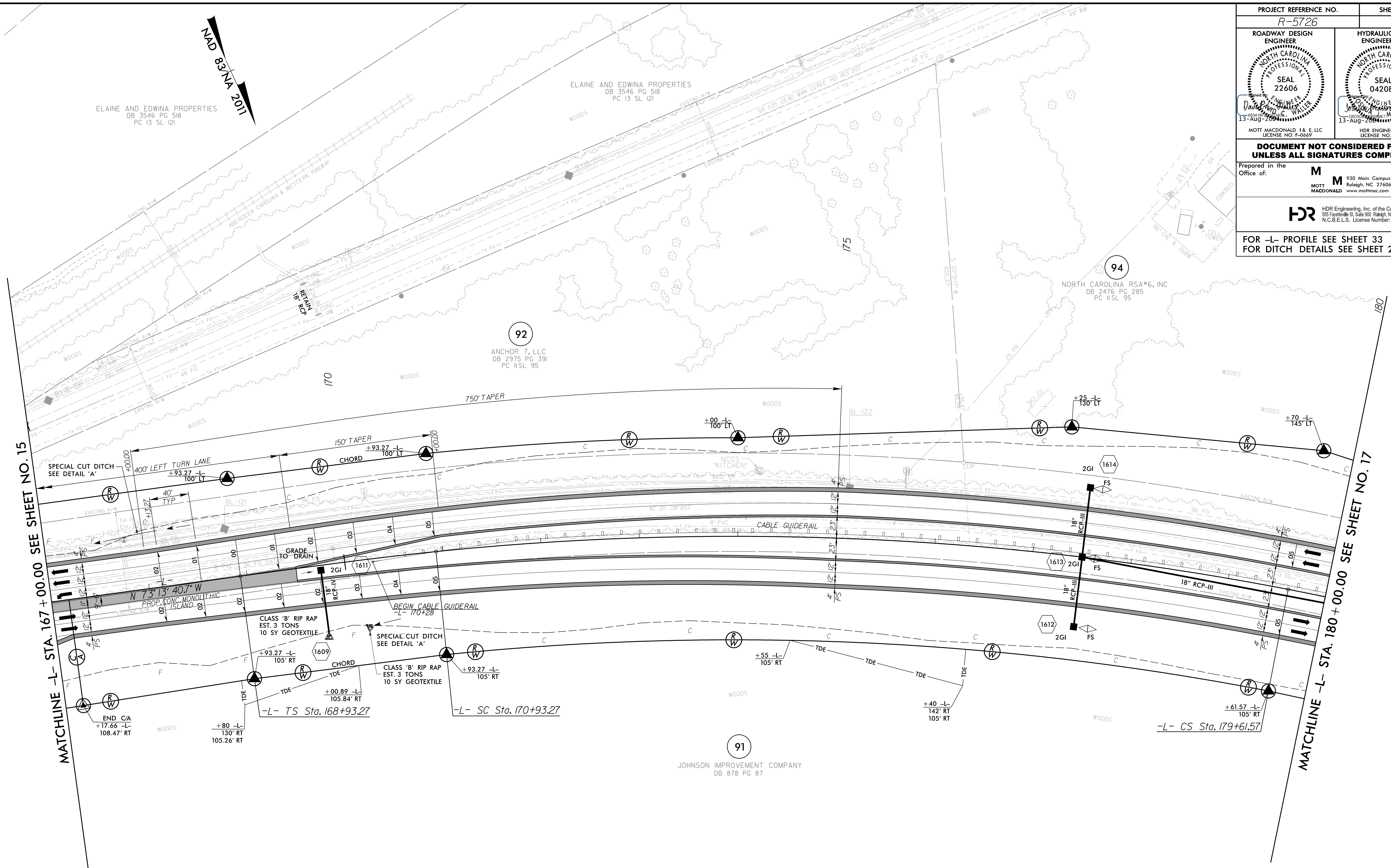


8/17/99

PROJECT REFERENCE NO. <b>R-5726</b>	SHEET NO. <b>16</b>
ROADWAY DESIGN ENGINEER MOTT MACDONALD & E. LLC 13-AUG-2016 LICENSE NO. F-06697	HYDRAULICS ENGINEER MOTT MACDONALD & E. LLC 13-AUG-2016 LICENSE NO. F-0116
 	
<p><b>DOCUMENT NOT CONSIDERED FINAL</b> <b>UNLESS ALL SIGNATURES COMPLETED</b></p>	
<p>Prepared in the Office of: <b>M</b> MOTT MACDONALD &amp; E. LLC 930 Main Campus Drive, Suite 200 Raleigh, NC 27606 www.mottmac.com</p>	
<p><b>HDR</b> HDR Engineering, Inc. of the Carolinas 555 Fayetteville St., Suite 900 Raleigh, N.C. 27601 N.C.B.E.L.S. License Number: F-0116</p>	
<p>FOR -L- PROFILE SEE SHEET 33 FOR DITCH DETAILS SEE SHEET 2D-1</p>	



MATCHLINE -L- STA. 167 + 00.00 SEE SHET NO. 15

MATCHLINE -L- STA. 180 + 00.00 SEE SHEET NO. 17

-L-

<i>PIs</i> Sta 170+26.61	<i>PI</i> Sta 175+30.56	<i>PIs</i> Sta 180+28.24
<i>Os</i> = 1' 56' 08.4"	$\Delta$ = 16' 48' 26.4" (RT)	<i>Os</i> = 1' 56' 08.4"
<i>LS</i> = 200.00'	<i>D</i> = 1' 56' 08.4"	<i>LS</i> = 200.00'
<i>LT</i> = 133.34'	<i>L</i> = 868.30'	<i>LT</i> = 133.34'
<i>ST</i> = 66.67'	<i>T</i> = 437.29'	<i>ST</i> = 66.67'
	<i>R</i> = 2,960.00'	
	<i>SE</i> = 0.05	
	<i>RO</i> = 200'	

ALL DRIVEWAY RADII ARE 10' UNLESS OTHERWISE NOTED ON PLANS.

7/29/2024  
R:\Projects\4\Proj\5726\_rdy\_psh16.dgn  
MOT 7/29/24