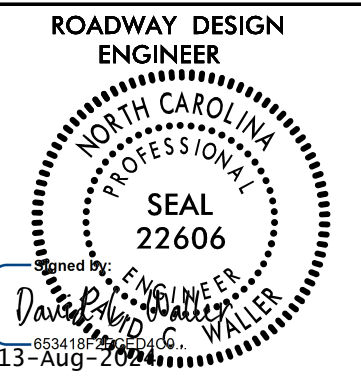
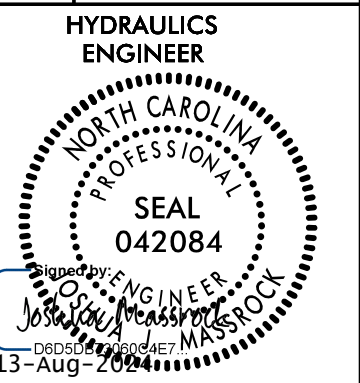

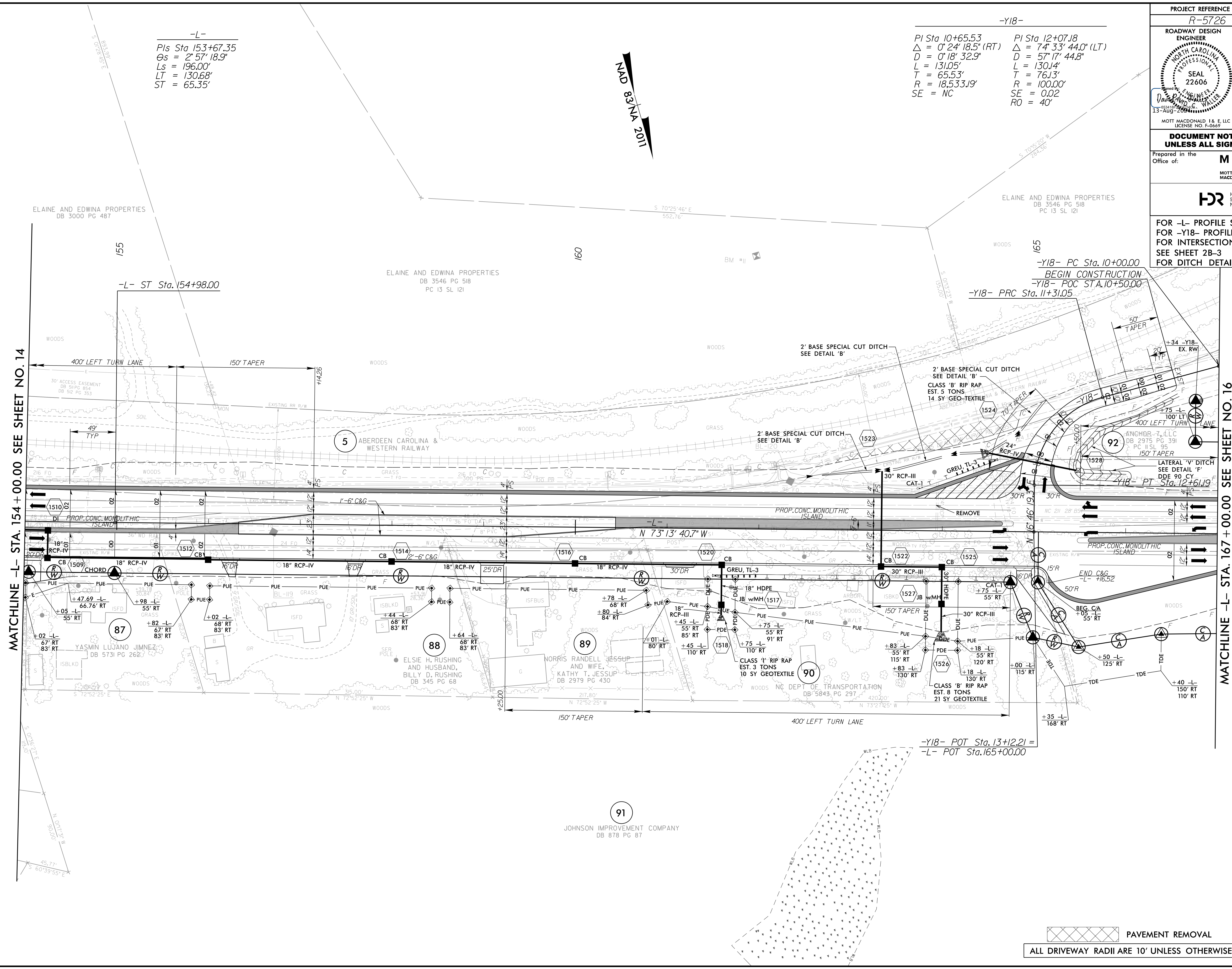


PROJECT REFERENCE NO. R-5726	SHEET NO. 15
ROADWAY DESIGN ENGINEER MOTT MACDONALD & E. LLC LICENSE NO. F-0669	HYDRAULICS ENGINEER MOTT MACDONALD & E. LLC LICENSE NO. F-0116
 	
DOCUMENT NOT CONSIDERED FINAL UNLESS ALL SIGNATURES COMPLETED	
Prepared in the Office of: M MOTT MACDONALD & E. LLC 930 Main Campus Drive, Suite 200 Raleigh, NC 27606 www.mottmac.com	
 HDR Engineering, Inc. of the Carolinas 555 Fayetteville St., Suite 800 Raleigh, NC 27601 N.C.B.E.L.S. License Number: F-0116	
FOR -L- PROFILE SEE SHEET 32 FOR -Y18- PROFILE SEE SHEET 42 FOR INTERSECTION DETAIL SEE SHEET 2B-3 FOR DITCH DETAILS SEE SHEET 2D-1	

-L-
 PIs Sta 153+67.35
 Δs = 2° 57' 18.9"
 Ls = 196.00'
 LT = 130.68'
 ST = 65.35'

-Y18-
 PI Sta 10+65.53 Δ = 0° 24' 18.5" (RT)
 D = 0° 18' 32.9" L = 131.05'
 T = 65.53' R = 18.53319'
 SE = NC
 PI Sta 12+07.18 Δ = 74° 33' 44.0" (LT)
 D = 57° 17' 44.8" L = 130.14'
 T = 76.13' R = 100.00'
 SE = 0.02 RO = 40'

NAD 83 NVA 2011



MATCHLINE -L- STA. 154 + 00.00 SEE SHEET NO. 14

MATCHLINE -L- STA. 167 + 00.00 SEE SHEET NO. 16

 PAVEMENT REMOVAL
 ALL DRIVEWAY RADII ARE 10' UNLESS OTHERWISE NOTED ON PLANS.

7/29/2024
 R:\Projects\4\Proj\5726.rdj_psh15.dgn
 M:\784478

8/17/99