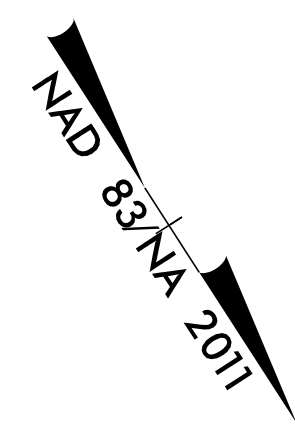


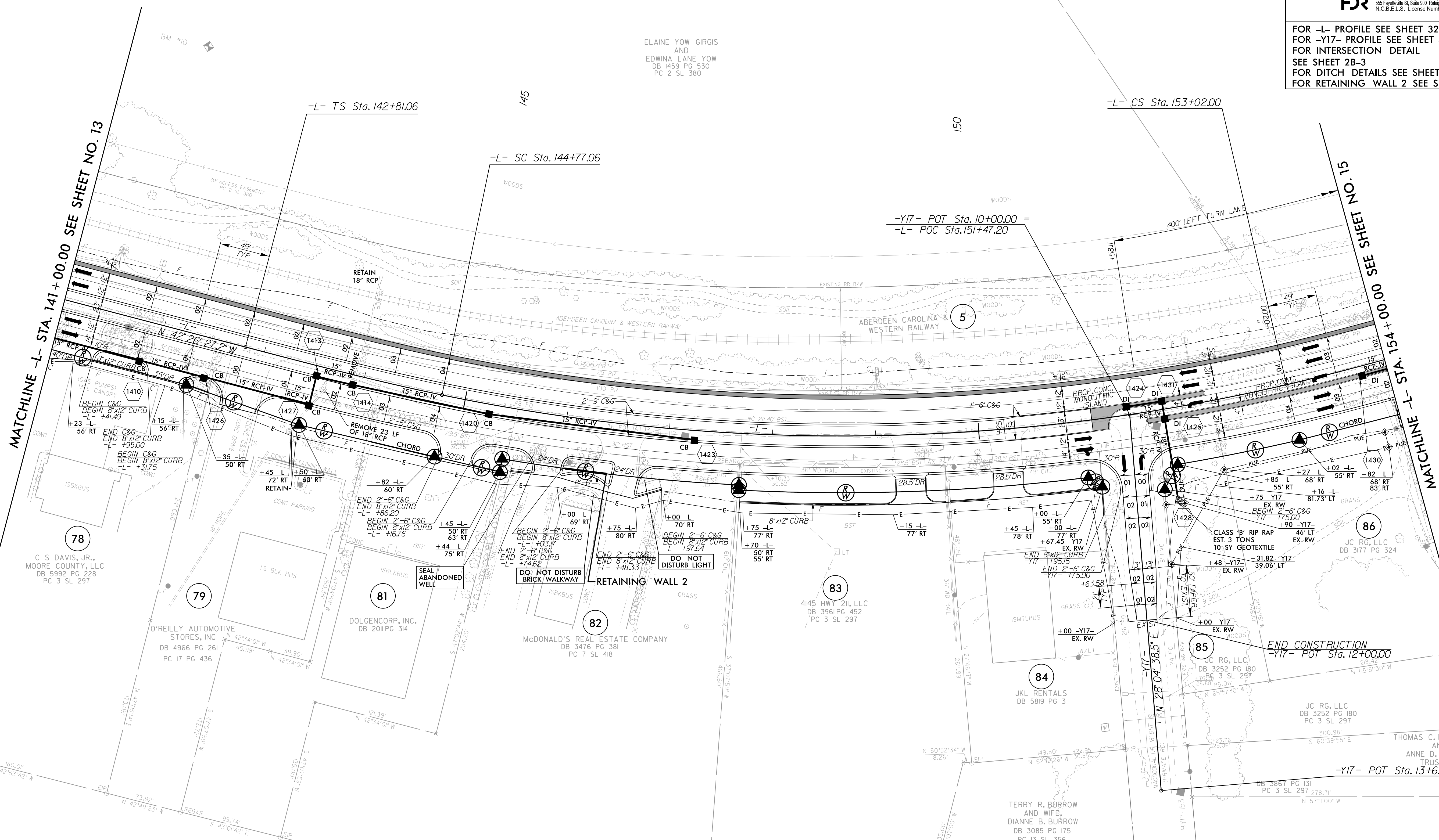
8/17/99

-L-

Pls Sta 144+11.74	Pls Sta 148+96.13	Pls Sta 153+67.35
$\theta_s = 2^\circ 57' 18.9''$	$\Delta = 24^\circ 52' 35.6''$ (LT)	$\theta_s = 2^\circ 57' 18.9''$
$L_s = 196.00'$	$D = 3^\circ 00' 56.0''$	$L_s = 196.00'$
$LT = 130.68'$	$L = 824.94'$	$LT = 130.68'$
$ST = 65.35'$	$T = 419.07'$	$ST = 65.35'$
	$R = 1,900.00'$	
	$SE = 0.04$	
	$RO = 196'$	



PROJECT REFERENCE NO. R-5726	SHEET NO. 14
ROADWAY DESIGN ENGINEER MOTT MACDONALD & E, LLC 13-Aug-2014	HYDRAULICS ENGINEER MOTT MACDONALD & E, LLC 13-Aug-2014
DOCUMENT NOT CONSIDERED FINAL UNLESS ALL SIGNATURES COMPLETED	
Prepared in the Office of: M MOTT MACDONALD	
930 Main Campus Drive, Suite 200 Raleigh, NC 27606 www.mottmac.com	
HDR HDR Engineering, Inc. of the Carolinas 355 Fayetteville St., Suite 900 Raleigh, N.C. 27601 N.C.B.E.L.S. License Number: F-0116	
FOR -L- PROFILE SEE SHEET 32 FOR -Y17- PROFILE SEE SHEET 41 FOR INTERSECTION DETAIL SEE SHEET 2B-3 FOR DITCH DETAILS SEE SHEET 2D-1 FOR RETAINING WALL 2 SEE SHEET W-2	



MATCHLINE -L- STA. 141+00.00 SEE SHEET NO. 13

MATCHLINE -L- STA. 154+00.00 SEE SHEET NO. 15

78
C S DAVIS, JR.,
MOORE COUNTY, LLC
DB 5992 PG 228
PC 3 SL 297

79
O'REILLY AUTOMOTIVE
STORES, INC
DB 4966 PG 261
PC 17 PG 436

81
DOLGENCORP, INC.
DB 2011 PG 314

82
McDONALD'S REAL ESTATE COMPANY
DB 3476 PG 381
PC 7 SL 418

83
4145 HWY 2H, LLC
DB 3961 PG 452
PC 3 SL 297

84
JKL RENTALS
DB 5819 PG 3

85
JC RG, LLC
DB 3252 PG 180
PC 3 SL 297

86
JC RG, LLC
DB 3177 PG 324

END CONSTRUCTION
-Y17- POT Sta. 12+00.00

-Y17- POT Sta. 13+65.82

ALL DRIVEWAY RADII ARE 10' UNLESS OTHERWISE NOTED ON PLANS.

7/29/2024
R:\Projects\4\Proj\5726_rdy_psh14.dgn
MATT