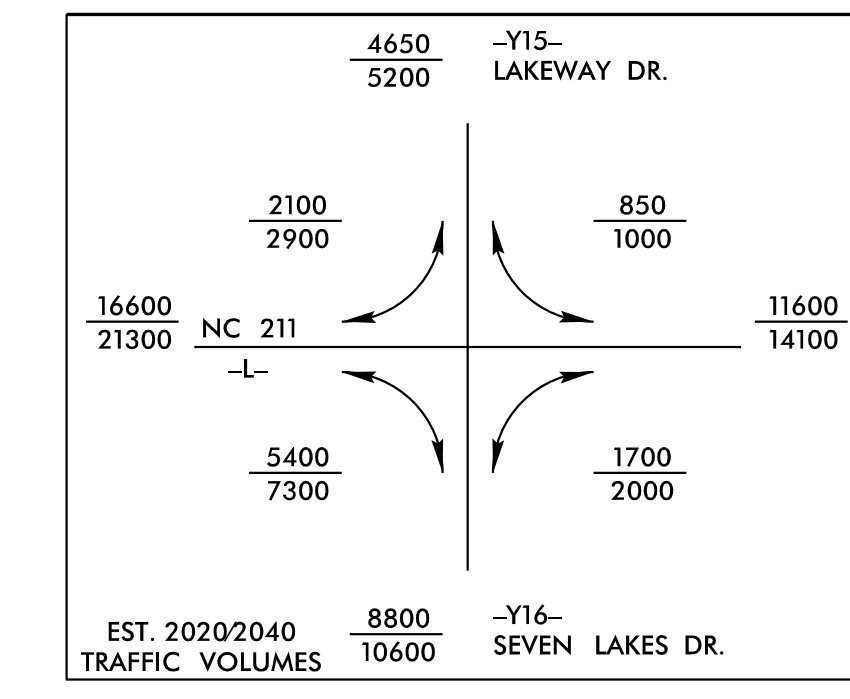
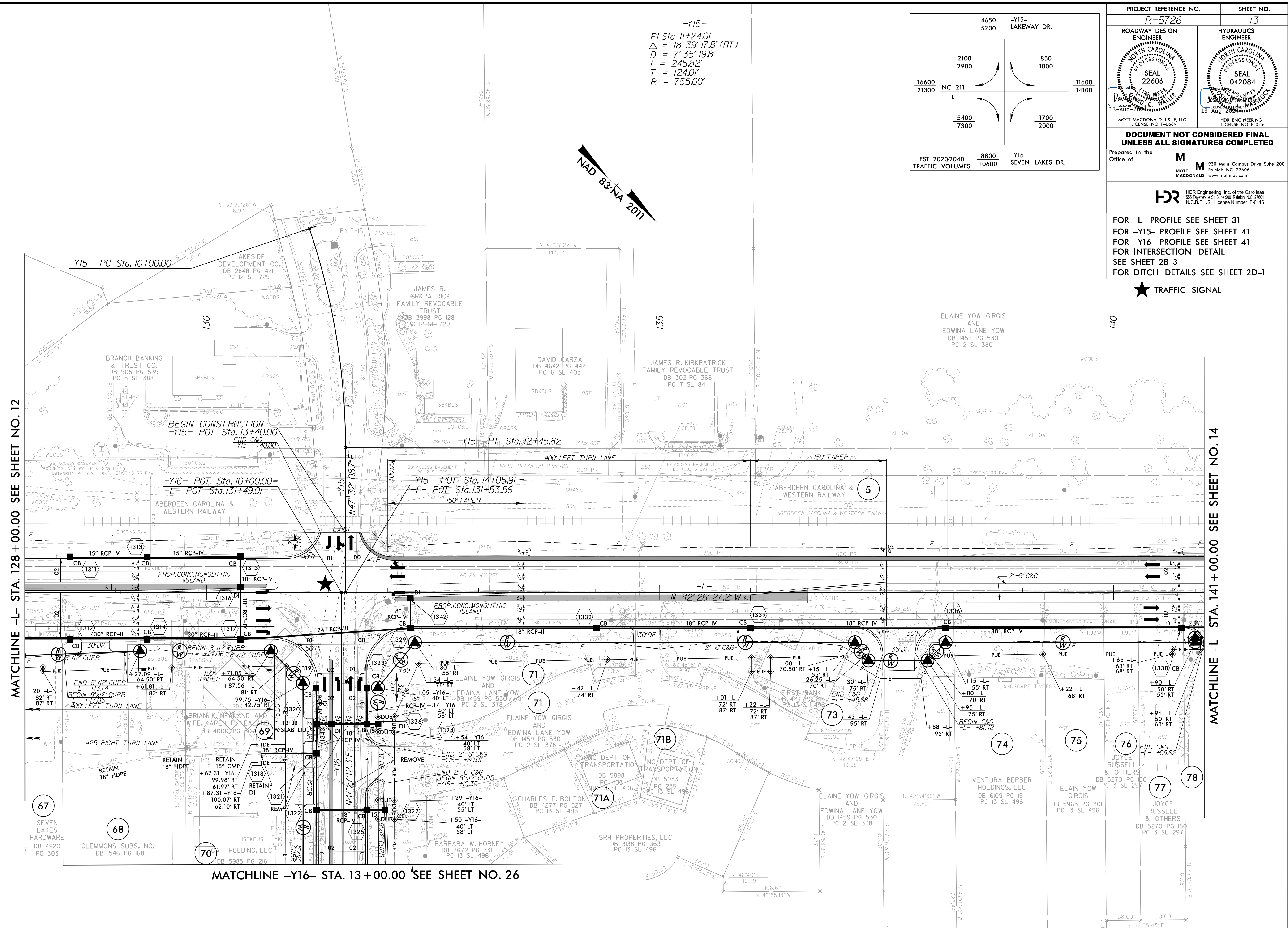
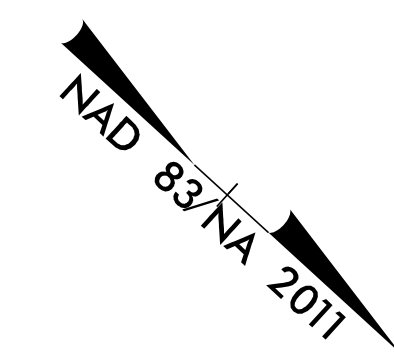


8/17/99

PROJECT REFERENCE NO. R-5726		SHEET NO. 13	
ROADWAY DESIGN ENGINEER MOTT MACDONALD & E, LLC 13-AUG-2016		HYDRAULICS ENGINEER MOTT MACDONALD & E, LLC 13-AUG-2016	
SEAL 22606		SEAL 042084	
DOCUMENT NOT CONSIDERED FINAL UNLESS ALL SIGNATURES COMPLETED			
Prepared in the Office of: M MOTT MACDONALD			
930 Main Campus Drive, Suite 200 Raleigh, NC 27606 www.mottmac.com			



-Y15-
PI Sta 11+24.01
 $\Delta = 18^\circ 39' 17.8''$ (RT)
 $D = 7^\circ 35' 19.8''$
 $L = 245.82'$
 $T = 124.01'$
 $R = 755.00'$



MATCHLINE -L- STA. 128 + 00.00 SEE SHEET NO. 12

MATCHLINE -L- STA. 141 + 00.00 SEE SHEET NO. 14

MATCHLINE -Y16- STA. 13 + 00.00 SEE SHEET NO. 26

ALL DRIVEWAY RADII ARE 10' UNLESS OTHERWISE NOTED ON PLANS.

7/29/2024
R:\Projects\4\Proj\5726_rdy_psh13.dgn
MOT