

8/17/99

PROJECT REFERENCE NO. <i>R-5726</i>	SHEET NO. <i>12A</i>
ROADWAY DESIGN ENGINEER SEAL 22606 MOTT MACDONALD I & E, LLC LICENSE NO. F-0669	HYDRAULICS ENGINEER SEAL 042084 HDR ENGINEERING LICENSE NO. F-0116

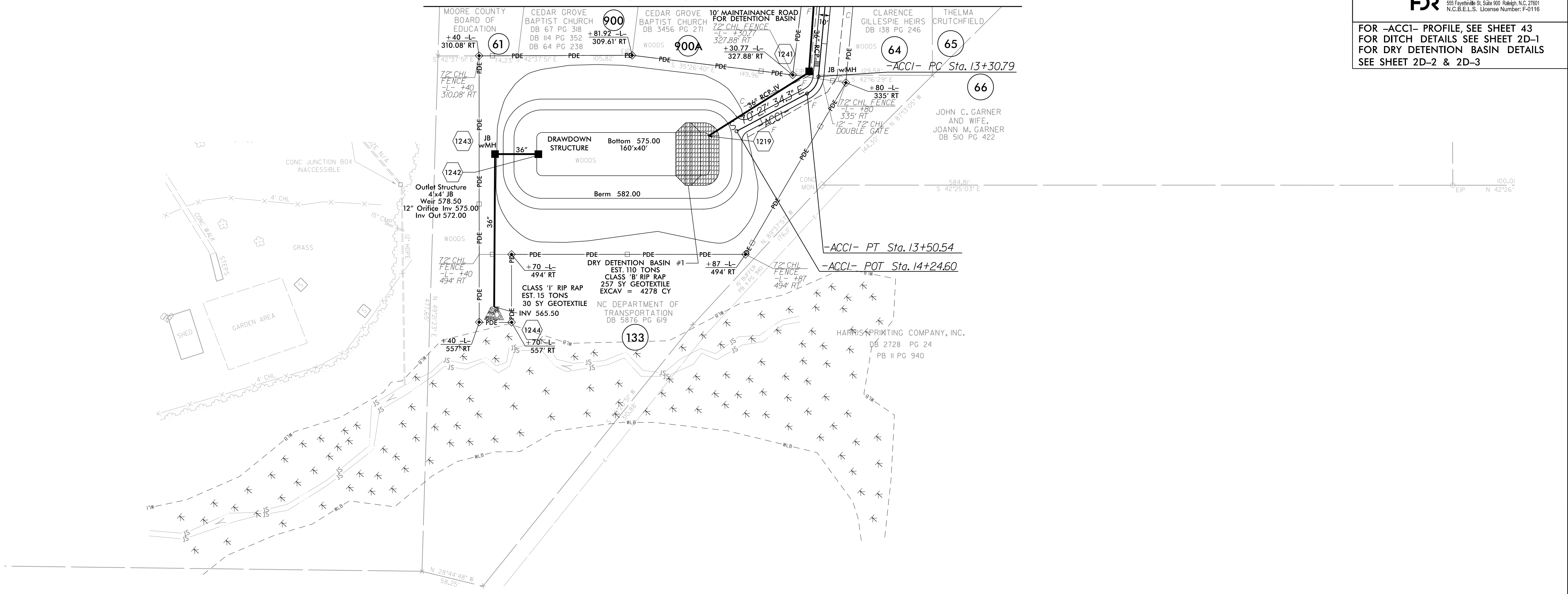
**DOCUMENT NOT CONSIDERED FINAL
UNLESS ALL SIGNATURES COMPLETED**

Prepared in the Office of: **M**
MOTT MACDONALD
930 Main Campus Drive, Suite 200
Raleigh, NC 27606
www.mottmac.com

HDR HDR Engineering, Inc. of the Carolinas
555 Fayetteville St., Suite 900 Raleigh, N.C. 27601
N.C.B.E.L.S. License Number: F-0116

FOR -ACCI- PROFILE, SEE SHEET 43
FOR DITCH DETAILS SEE SHEET 2D-1
FOR DRY DETENTION BASIN DETAILS
SEE SHEET 2D-2 & 2D-3

MATCHLINE SEE SHEET NO. 12



-ACCI-
 PI Sta 13+41.55
 $\Delta = 56' 34' 53.7" (RT)$
 $D = 286' 28' 44.0"$
 $L = 19.75'$
 $T = 10.76'$
 $R = 20.00'$

ALL DRIVEWAY RADII ARE 10' UNLESS OTHERWISE NOTED ON PLANS.

8/1/2024
R:\Projects\5726\Proj\5726_rdy_psh12A.dgn
10/26/2024