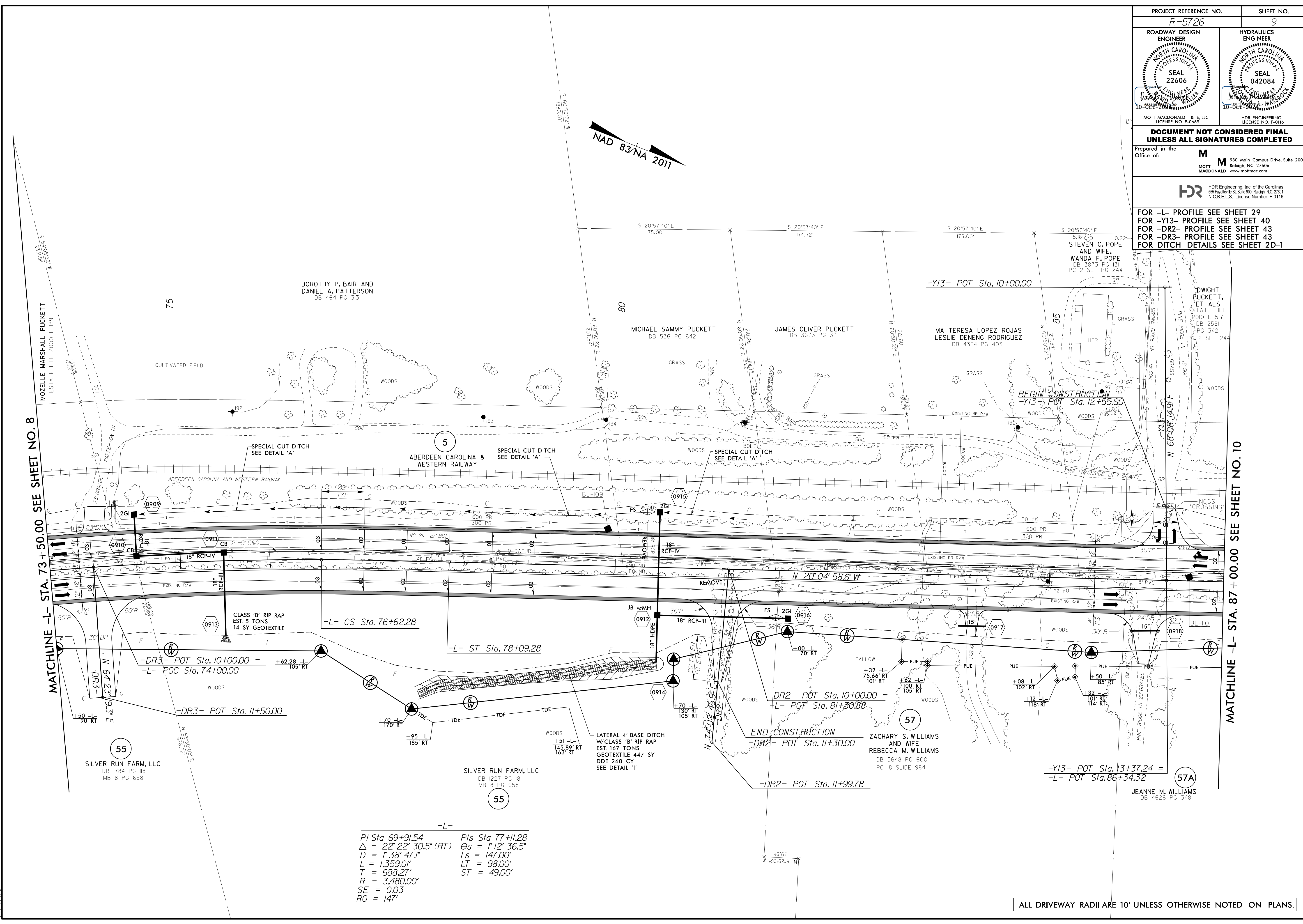


PROJECT REFERENCE NO. R-5726	SHEET NO. 9
ROADWAY DESIGN ENGINEER WANDA F. POPE NORTH CAROLINA PROFESSIONAL SEAL 22606 10-DEC-2014	HYDRAULICS ENGINEER JEANNE M. WILLIAMS NORTH CAROLINA PROFESSIONAL SEAL 042084 10-OCT-2014
MOTT MACDONALD 1 & E, LLC LICENSE NO. F-0669	
HDR ENGINEERING, Inc. of the Carolinas 555 Fayetteville St., Suite 900, Raleigh, NC 27601 N.C.B.E.L.S. License Number: F-0116	
DOCUMENT NOT CONSIDERED FINAL UNLESS ALL SIGNATURES COMPLETED	
Prepared in the Office of: MOTT MACDONALD	
930 Main Campus Drive, Suite 200 Raleigh, NC 27606 www.mottmac.com	

FOR -L- PROFILE SEE SHEET 29
 FOR -Y13- PROFILE SEE SHEET 40
 FOR -DR2- PROFILE SEE SHEET 43
 FOR -DR3- PROFILE SEE SHEET 43
 FOR DITCH DETAILS SEE SHEET 2D-1



MATCHLINE -L- STA. 73 + 50.00 SEE SHEET NO. 8

MATCHLINE -L- STA. 87 + 00.00 SEE SHEET NO. 10

-L-
 PI Sta 69+91.54 Pls Sta 77+11.28
 $\Delta = 22^\circ 22' 30.5''$ (RT) $\Theta_s = 1^\circ 12' 36.5''$
 $D = 1^\circ 38' 47''$ $L_s = 147.00'$
 $L = 1,359.01'$ $LT = 98.00'$
 $T = 688.27'$ $ST = 49.00'$
 $R = 3,480.00'$
 $SE = 0.03$
 $RO = 147'$

ALL DRIVEWAY RADII ARE 10' UNLESS OTHERWISE NOTED ON PLANS.