
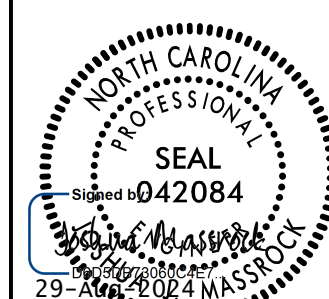

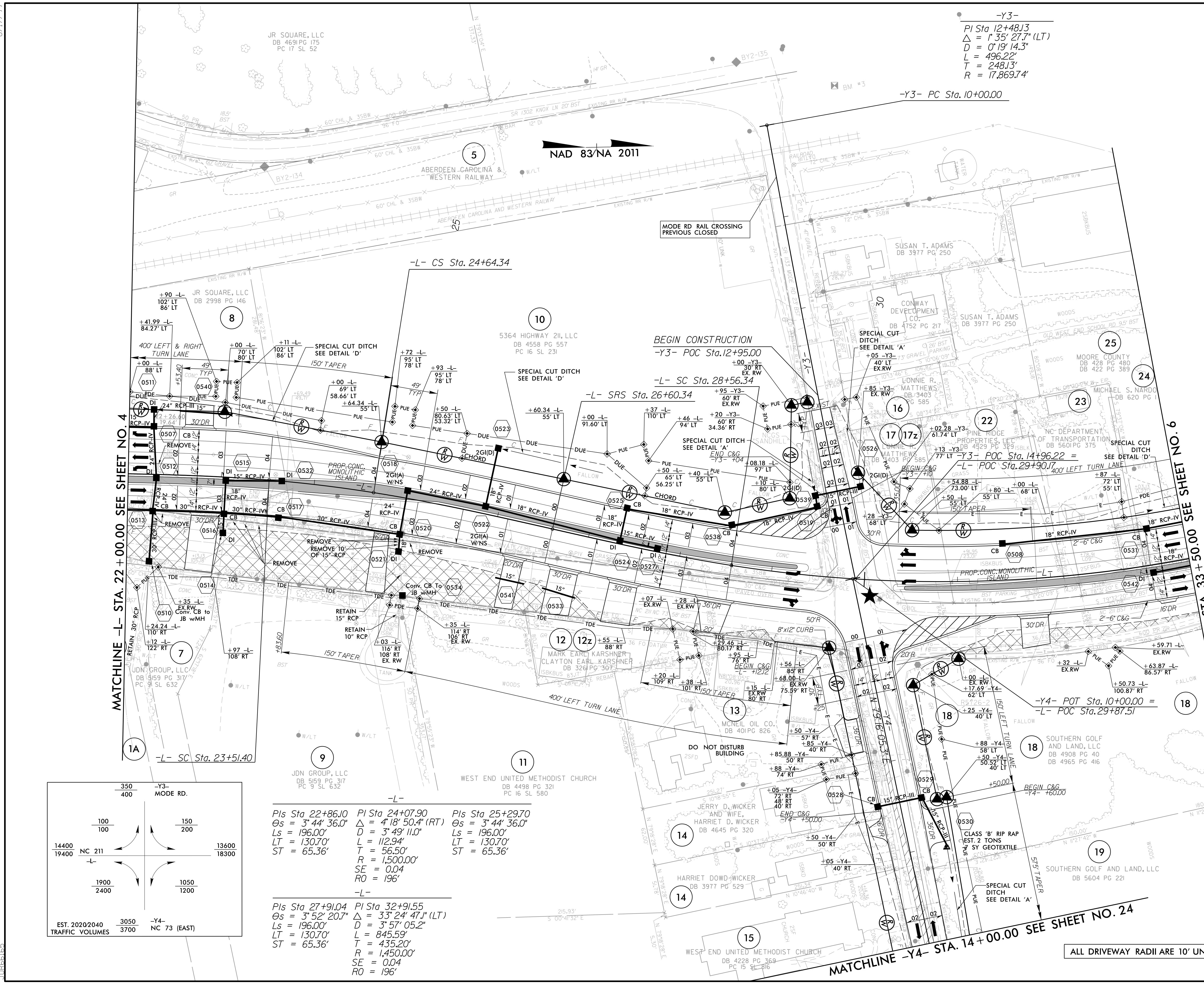


8/17/99

PROJECT REFERENCE NO. R-5726		SHEET NO. 5	
ROADWAY DESIGN ENGINEER		HYDRAULICS ENGINEER	
			
DOCUMENT NOT CONSIDERED FINAL UNLESS ALL SIGNATURES COMPLETED			
Prepared in the Office of: M MOTT MACDONALD & E. LLC 930 Main Campus Drive, Suite 200 Raleigh, NC 27606 License No. F-0669			
 HDR Engineering, Inc. of the Carolinas 555 Fayetteville St., Suite 900 Raleigh, N.C. 27601 N.C.B.E.L.S. License Number: F-0116			

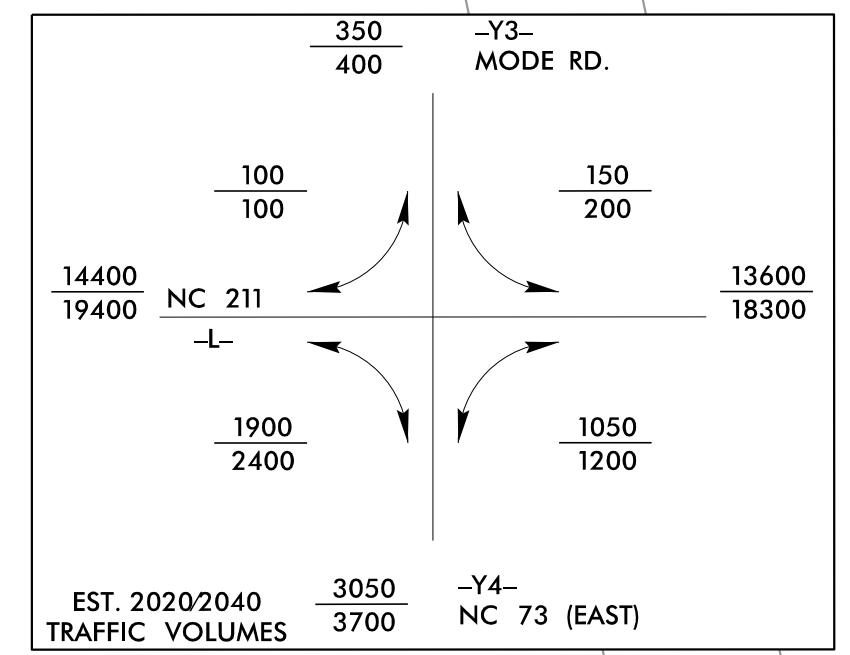
FOR -L- PROFILE SEE SHEET 27
 FOR -Y3- PROFILE SEE SHEET 38
 FOR -Y4- PROFILE SEE SHEET 39
 FOR INTERSECTION DETAIL SEE SHEET 2B-1
 FOR DITCH DETAILS SEE SHEET 2D-1

★ TRAFFIC SIGNAL



MATCHLINE -L- STA. 22+00.00 SEE SHEET NO. 4

MATCHLINE -L- STA. 33+50.00 SEE SHEET NO. 6



Pls Sta 22+86.10 $\Theta_s = 3^{\circ} 44' 36.0''$ $L_s = 196.00'$ $LT = 130.70'$ $ST = 65.36'$	Pls Sta 24+07.90 $\Theta_s = 4^{\circ} 18' 50.4'' (RT)$ $D = 3^{\circ} 49' 11.0''$ $L = 112.94'$ $T = 56.50'$ $R = 1,500.00'$ $SE = 0.04$ $RO = 196'$	Pls Sta 25+29.70 $\Theta_s = 3^{\circ} 44' 36.0''$ $L_s = 196.00'$ $LT = 130.70'$ $ST = 65.36'$
-L-		
Pls Sta 27+91.04 $\Theta_s = 3^{\circ} 52' 20.7''$ $L_s = 196.00'$ $LT = 130.70'$ $ST = 65.36'$	Pls Sta 32+91.55 $\Delta = 33^{\circ} 24' 47.1'' (LT)$ $D = 3^{\circ} 57' 05.2''$ $L = 845.59'$ $T = 435.20'$ $R = 1,450.00'$ $SE = 0.04$ $RO = 196'$	

ALL DRIVEWAY RADII ARE 10' UNLESS OTHERWISE NOTED ON PLANS.

8/27/2024
 R:\Roadway\Proj\5726\rdy_psh05.dgn
 10:56:15