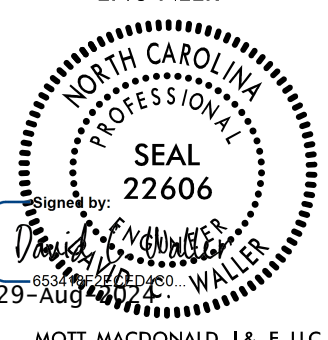
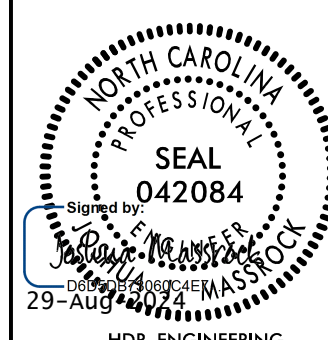

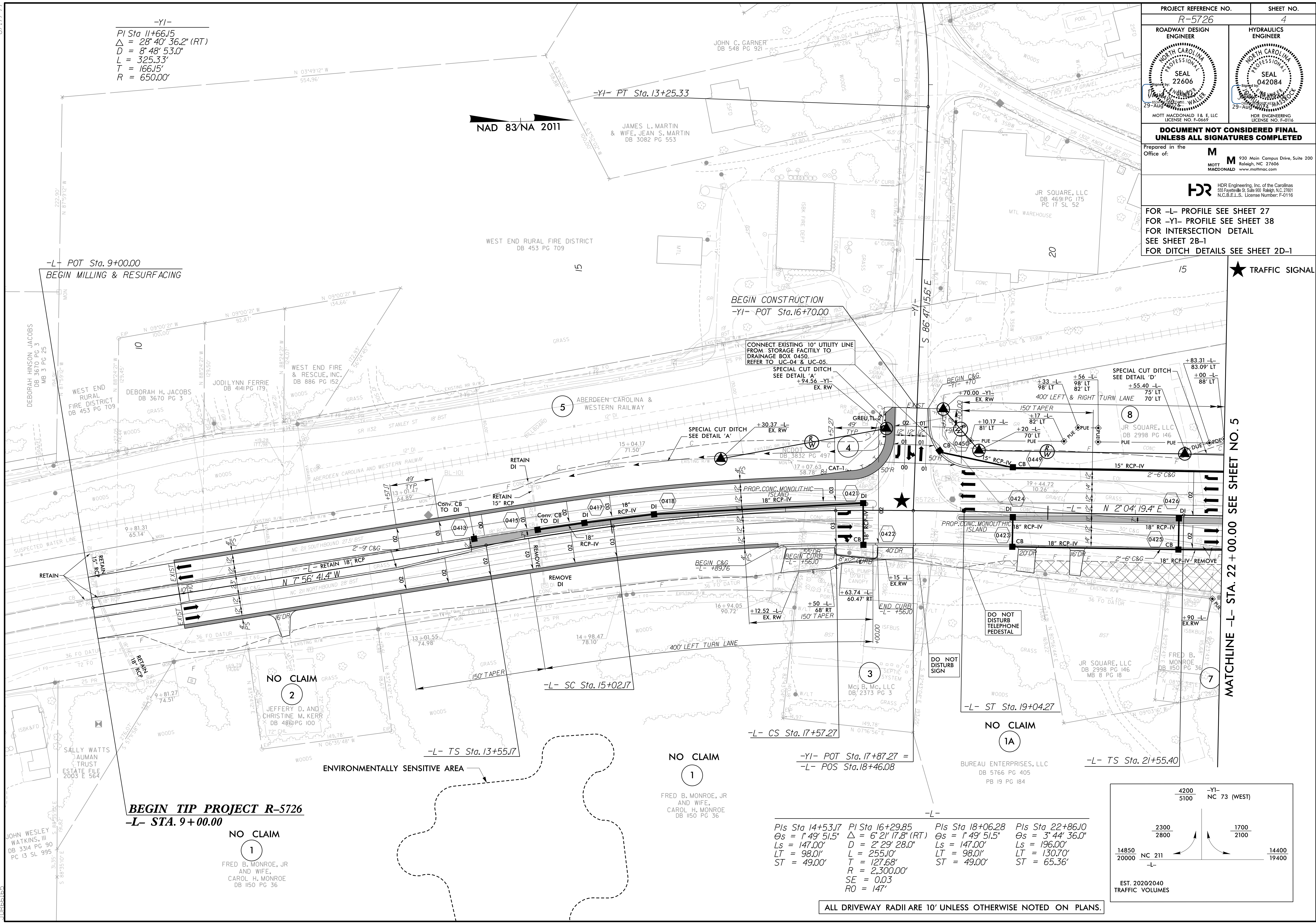


PROJECT REFERENCE NO. <b>R-5726</b>		SHEET NO. <b>4</b>	
ROADWAY DESIGN ENGINEER		HYDRAULICS ENGINEER	
			
<b>DOCUMENT NOT CONSIDERED FINAL</b> <b>UNLESS ALL SIGNATURES COMPLETED</b>			
Prepared in the Office of: <b>M</b> MOTT MACDONALD I & E, LLC 930 Main Campus Drive, Suite 200 Raleigh, NC 27606 www.mottmac.com			
 HDR Engineering, Inc. of the Carolinas 555 Fayetteville St., Suite 900 Raleigh, N.C. 27601 N.C.B.E.L.S. License Number: F-0116			
FOR -L- PROFILE SEE SHEET 27 FOR -YI- PROFILE SEE SHEET 38 FOR INTERSECTION DETAIL SEE SHEET 2B-1 FOR DITCH DETAILS SEE SHEET 2D-1			



-YI-  
 PI Sta 11+66.15  
 $\Delta = 28^\circ 40' 36.2''$  (RT)  
 $D = 8^\circ 48' 53.0''$   
 $L = 325.33'$   
 $T = 166.15'$   
 $R = 650.00'$

NAD 83/NA 2011

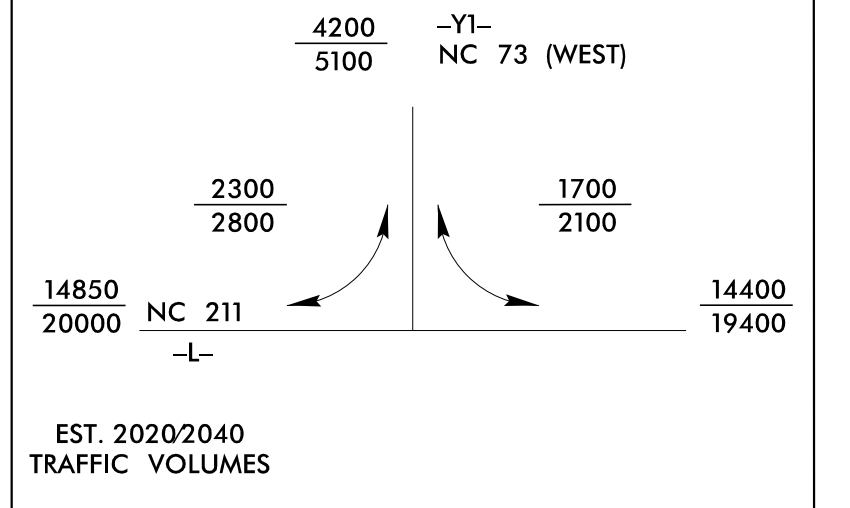
-L- POT Sta. 9+00.00  
 BEGIN MILLING & RESURFACING

BEGIN CONSTRUCTION  
 -YI- POT Sta. 16+70.00

**BEGIN TIP PROJECT R-5726**  
 -L- STA. 9+00.00

NO CLAIM  
 1  
 FRED B. MONROE, JR  
 AND WIFE,  
 CAROL H. MONROE  
 DB 150 PG 36

Pls Sta 14+53.17 $\Theta s = 1^\circ 49' 51.5''$ $Ls = 147.00'$ $LT = 98.01'$ $ST = 49.00'$	Pl Sta 16+29.85 $\Delta = 6^\circ 21' 17.8''$ (RT) $D = 2^\circ 29' 28.0''$ $L = 255.10'$ $T = 127.68'$ $R = 2,300.00'$ $SE = 0.03$ $RO = 147'$	Pls Sta 18+06.28 $\Theta s = 1^\circ 49' 51.5''$ $Ls = 147.00'$ $LT = 98.01'$ $ST = 49.00'$	Pls Sta 22+86.10 $\Theta s = 3^\circ 44' 36.0''$ $Ls = 196.00'$ $LT = 130.70'$ $ST = 65.36'$
---	--	---	--



ALL DRIVEWAY RADII ARE 10' UNLESS OTHERWISE NOTED ON PLANS.

MATCHLINE -L- STA. 22 + 00.00 SEE SHEET NO. 5

★ TRAFFIC SIGNAL

8/17/2024 R:\Projects\4\Proj\5726\_rdy\_psh04.dgn