

**DOCUMENT NOT CONSIDERED FINAL
UNLESS ALL SIGNATURES COMPLETED**

LEGEND

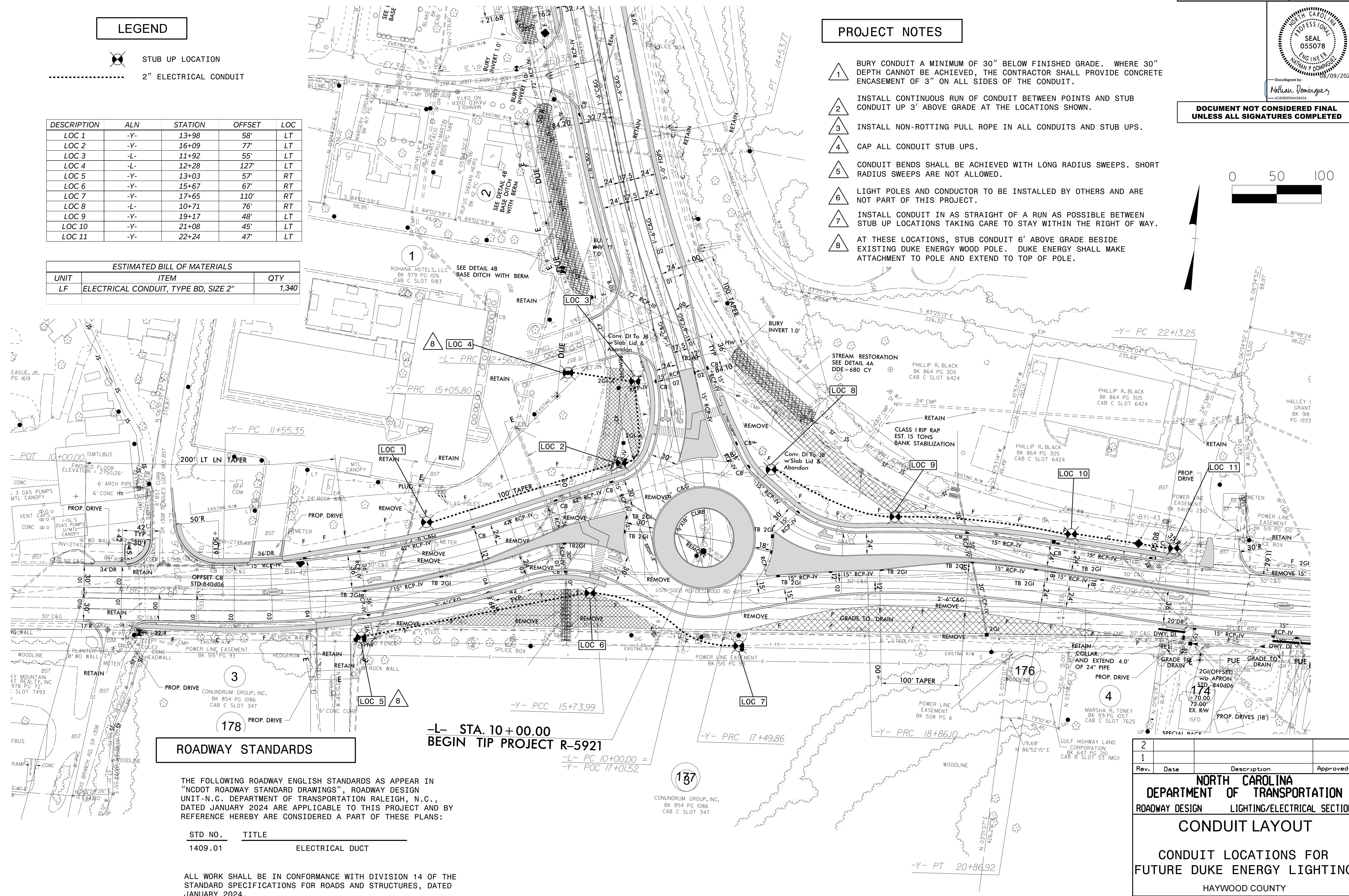
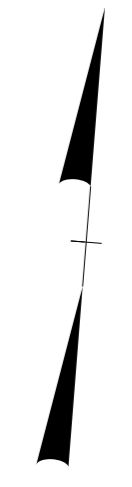
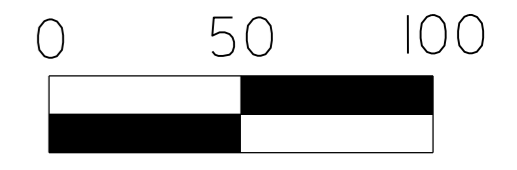
- STUB UP LOCATION
- 2" ELECTRICAL CONDUIT

DESCRIPTION	ALN	STATION	OFFSET	LOC
LOC 1	-Y-	13+98	58'	LT
LOC 2	-Y-	16+09	77'	LT
LOC 3	-L-	11+92	55'	LT
LOC 4	-L-	12+28	127'	LT
LOC 5	-Y-	13+03	57'	RT
LOC 6	-Y-	15+67	67'	RT
LOC 7	-Y-	17+65	110'	RT
LOC 8	-L-	10+71	76'	RT
LOC 9	-Y-	19+17	48'	LT
LOC 10	-Y-	21+08	45'	LT
LOC 11	-Y-	22+24	47'	LT

ESTIMATED BILL OF MATERIALS		
UNIT	ITEM	QTY
LF	ELECTRICAL CONDUIT, TYPE BD, SIZE 2"	1,340

PROJECT NOTES

- 1 BURY CONDUIT A MINIMUM OF 30" BELOW FINISHED GRADE. WHERE 30" DEPTH CANNOT BE ACHIEVED, THE CONTRACTOR SHALL PROVIDE CONCRETE ENCASEMENT OF 3" ON ALL SIDES OF THE CONDUIT.
- 2 INSTALL CONTINUOUS RUN OF CONDUIT BETWEEN POINTS AND STUB CONDUIT UP 3' ABOVE GRADE AT THE LOCATIONS SHOWN.
- 3 INSTALL NON-ROTTING PULL ROPE IN ALL CONDUITS AND STUB UPS.
- 4 CAP ALL CONDUIT STUB UPS.
- 5 CONDUIT BENDS SHALL BE ACHIEVED WITH LONG RADIUS SWEEPS. SHORT RADIUS SWEEPS ARE NOT ALLOWED.
- 6 LIGHT POLES AND CONDUCTOR TO BE INSTALLED BY OTHERS AND ARE NOT PART OF THIS PROJECT.
- 7 INSTALL CONDUIT IN AS STRAIGHT OF A RUN AS POSSIBLE BETWEEN STUB UP LOCATIONS TAKING CARE TO STAY WITHIN THE RIGHT OF WAY.
- 8 AT THESE LOCATIONS, STUB CONDUIT 6' ABOVE GRADE BESIDE EXISTING DUKE ENERGY WOOD POLE. DUKE ENERGY SHALL MAKE ATTACHMENT TO POLE AND EXTEND TO TOP OF POLE.



ROADWAY STANDARDS

THE FOLLOWING ROADWAY ENGLISH STANDARDS AS APPEAR IN "NCDOT ROADWAY STANDARD DRAWINGS", ROADWAY DESIGN UNIT-N.C. DEPARTMENT OF TRANSPORTATION RALEIGH, N.C., DATED JANUARY 2024 ARE APPLICABLE TO THIS PROJECT AND BY REFERENCE HEREBY ARE CONSIDERED A PART OF THESE PLANS:

STD NO.	TITLE
1409.01	ELECTRICAL DUCT

ALL WORK SHALL BE IN CONFORMANCE WITH DIVISION 14 OF THE STANDARD SPECIFICATIONS FOR ROADS AND STRUCTURES, DATED JANUARY 2024.

-L- STA. 10+00.00
BEGIN TIP PROJECT R-5921

CONUNDRUM GROUP, INC.
BK 854 PG 1086
CAB C SLOT 347

Rev.	Date	Description	Approved
2			
1			

**NORTH CAROLINA
DEPARTMENT OF TRANSPORTATION**
ROADWAY DESIGN LIGHTING/ELECTRICAL SECTION

CONDUIT LAYOUT

**CONDUIT LOCATIONS FOR
FUTURE DUKE ENERGY LIGHTING**

HAYWOOD COUNTY

Drawn By: RGH	Approved By: NPD	Dwg No.:
------------------	---------------------	----------

09-AUG-2024 15:46 R:\Lighting\Lighting Design\R-5921\LE.dsn.dgn rghal AT RD 329781L