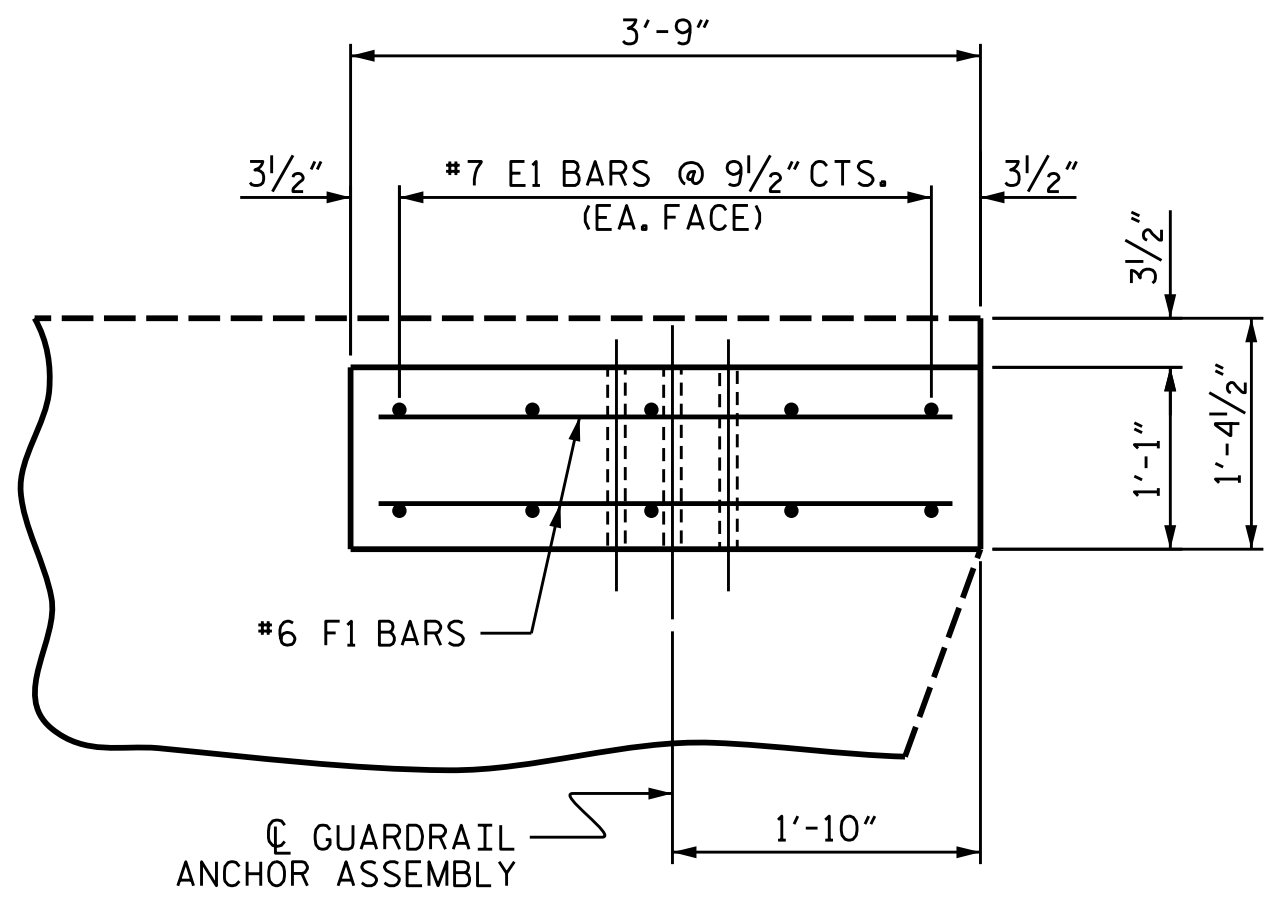
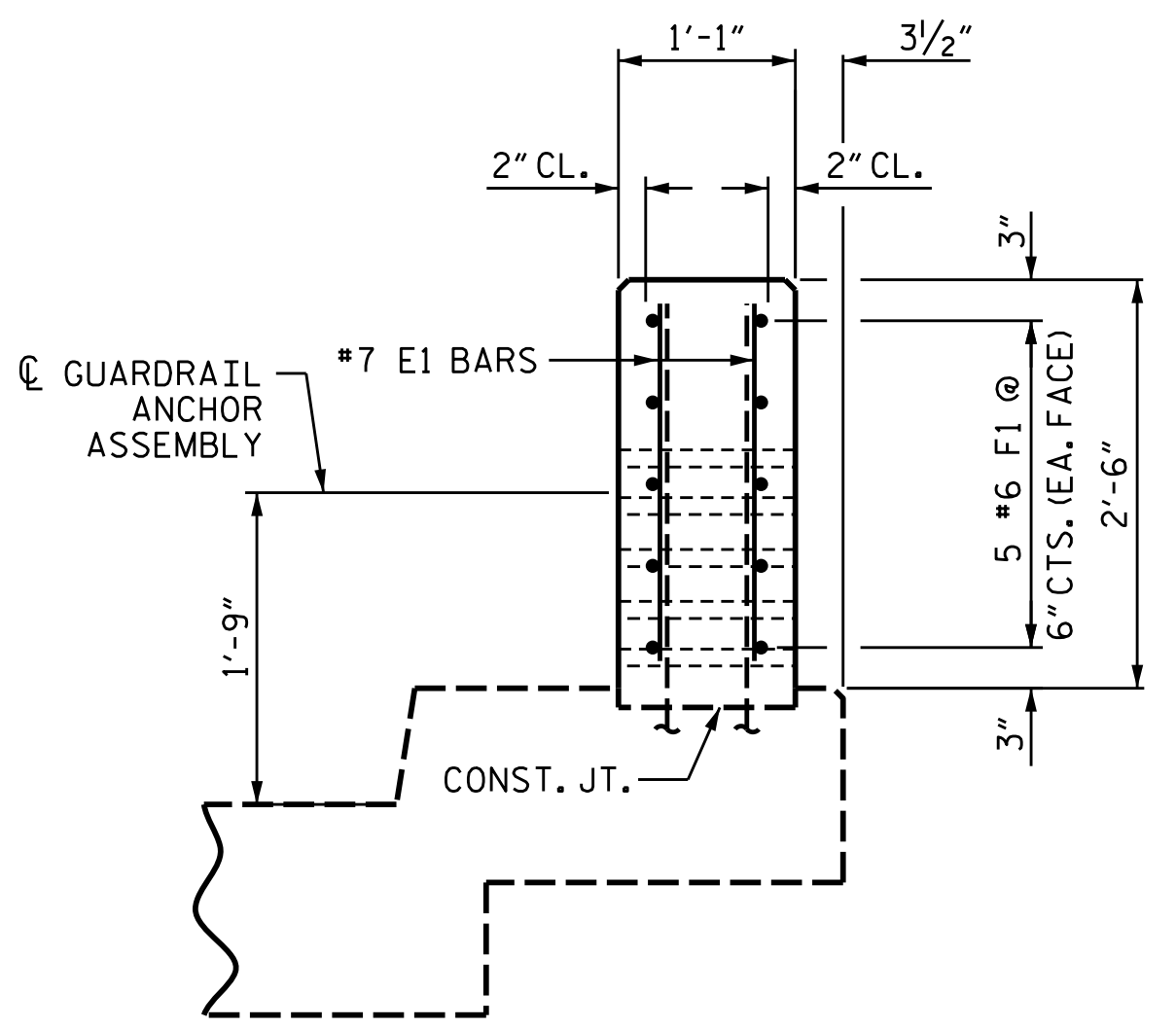


EXISTING END VIEW

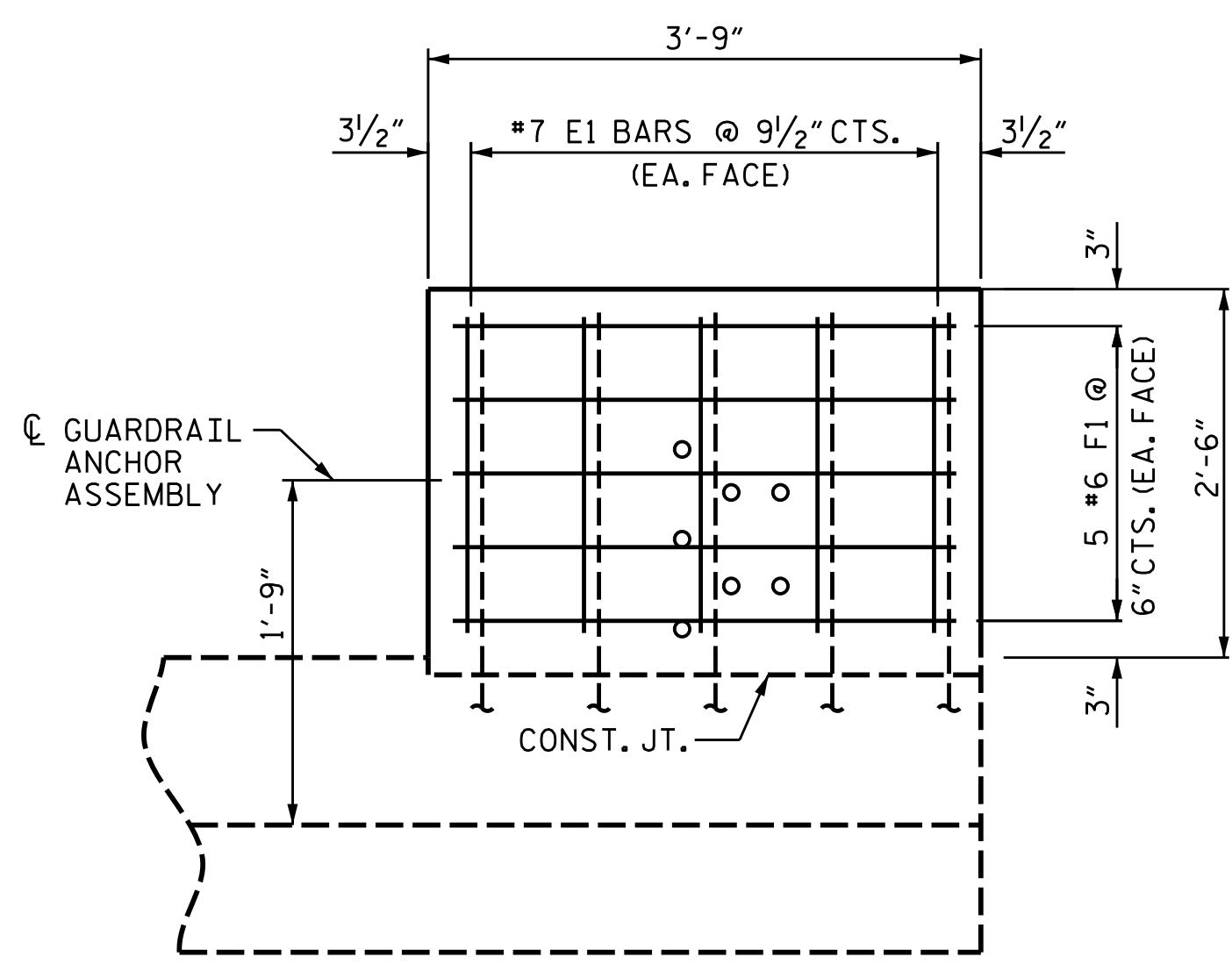
THE CONCRETE IN THE SHADED AREA SHALL BE REMOVED IN ACCORDANCE WITH THE STANDARD SPECIFICATIONS AND AS DIRECTED BY THE ENGINEER. CONCRETE UNDER THE EXISTING END POST SHALL BE REMOVED TO A DEPTH OF 1/2" BELOW THE TOP SURFACE OF THE EXISTING OVERHANG.



PLAN OF END POST



END VIEW



ELEVATION

PARAPET AND END POST

BILL OF MATERIAL FOR 1 END POST					
BAR	NO.	SIZE	TYPE	LENGTH	WEIGHT
*E1	10	#7	STR.	2'-2"	44
*F1	10	#6	STR.	3'-5"	51
* EPOXY COATED REINFORCING STEEL					95 LBS.
CLASS "AA" CONCRETE					0.4 C.Y.

PROJECT NO. R-5921
HAYWOOD COUNTY

SHEET 2 OF 3

STATE OF NORTH CAROLINA
 DEPARTMENT OF TRANSPORTATION
 RALEIGH

EXISTING BRIDGE 407
 OVER JONATHANS CREEK
 ON SR 1394 BETWEEN
 US 276 AND DEAD END

ENGINEER
 MARSHALL G. CHECK, JR.
 8/7/2024

DOCUMENT NOT CONSIDERED FINAL
 UNLESS ALL SIGNATURES COMPLETED

TGS ENGINEERS
 201 W. MARION ST STE 200
 SHELBY, NC 28150
 PH (704) 476-0003
 CORP. LICENSE NO.: C-0275

REVISIONS						SHEET NO.
NO.	BY:	DATE:	NO.	BY:	DATE:	
1			3			S-2
2			4			TOTAL SHEETS 3

DRAWN BY : NMW DATE : 07/24
 CHECKED BY : MGC DATE : 07/24