

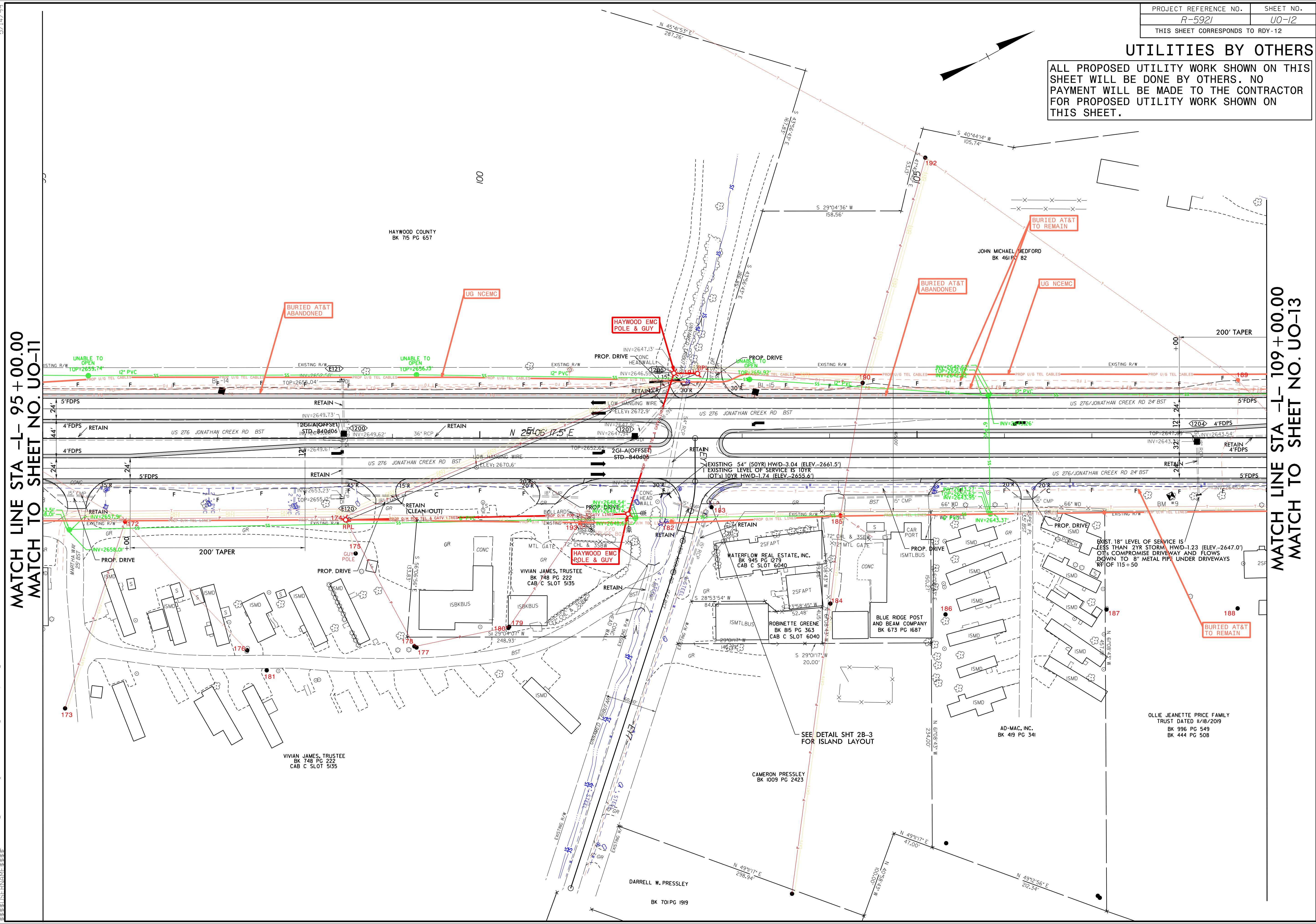
### UTILITIES BY OTHERS

ALL PROPOSED UTILITY WORK SHOWN ON THIS SHEET WILL BE DONE BY OTHERS. NO PAYMENT WILL BE MADE TO THE CONTRACTOR FOR PROPOSED UTILITY WORK SHOWN ON THIS SHEET.

5/14/99

MATCH LINE STA -L- 95 + 00.00  
MATCH TO SHEET NO. UO-11

MATCH LINE STA -L- 109 + 00.00  
MATCH TO SHEET NO. UO-13



15 JUL 2024 22:04 meering\UBO\Proj\NR-5921\ut.rdyl2.U012\_psh.dgn  
 5921\UBO\UT\11\12\13\14\15\16\17\18\19\20\21\22\23\24\25\26\27\28\29\30\31\32\33\34\35\36\37\38\39\40\41\42\43\44\45\46\47\48\49\50\51\52\53\54\55\56\57\58\59\60\61\62\63\64\65\66\67\68\69\70\71\72\73\74\75\76\77\78\79\80\81\82\83\84\85\86\87\88\89\90\91\92\93\94\95\96\97\98\99\100

OLLIE JEANNETTE PRICE FAMILY  
TRUST DATED 11/18/2019  
BK 996 PG 549  
BK 444 PG 508

SEE DETAIL SHT 28-3  
FOR ISLAND LAYOUT

CAMERON PRESSLEY  
BK 1009 PG 2423

DARRELL W. PRESSLEY  
BK 701 PG 1919

VIVIAN JAMES, TRUSTEE  
BK 748 PG 222  
CAB C SLOT 505

VIVIAN JAMES, TRUSTEE  
BK 748 PG 222  
CAB C SLOT 505

BLUE RIDGE POST  
AND BEAM COMPANY  
BK 673 PG 1687

ROBINETTE GREENE  
BK 815 PG 363  
CAB C SLOT 6040

WATERFLOW REAL ESTATE, INC.  
BK 945 PG 279  
CAB C SLOT 6040

VIVIAN JAMES, TRUSTEE  
BK 748 PG 222  
CAB C SLOT 505

PROP. DRIVE  
INV=2658.01

RETAIN  
INV=2657.91

RETAIN  
INV=2649.73

UNABLE TO OPEN  
TOP=2659.74

HAYWOOD COUNTY  
BK 715 PG 657

JOHN MICHAEL MEDFORD  
BK 461 PG 82

BURIED AT&T  
ABANDONED

UG NCEMC

HAYWOOD EMC  
POLE & GUY

UG NCEMC

BURIED AT&T  
ABANDONED

BURIED AT&T  
TO REMAIN

BURIED AT&T  
TO REMAIN

EXIST. 18" LEVEL OF SERVICE IS  
LESS THAN 2YR STORM HWD-1.23 (ELEV.-2647.0')  
O/T: COMPROMISE DRIVEWAY AND FLOWS  
DOWN TO 8" METAL PIPE UNDER DRIVEWAYS  
RT OF 115+50

AD-MAC, INC.  
BK 419 PG 341