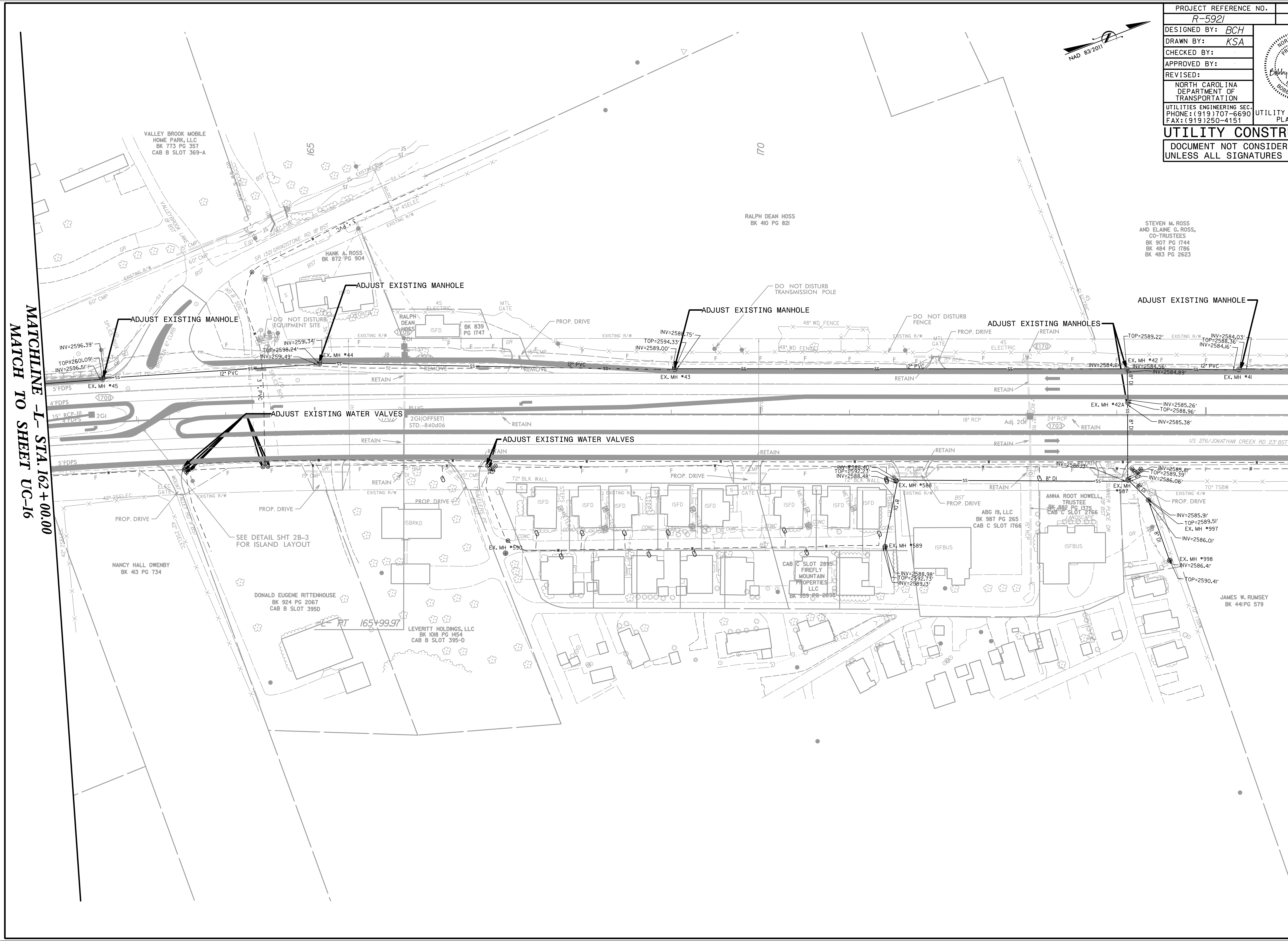
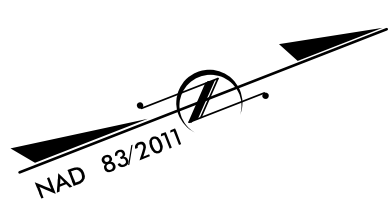


PROJECT REFERENCE NO. <i>R-5921</i>	SHEET NO. <i>UC-17</i>
DESIGNED BY: <i>BCH</i>	
DRAWN BY: <i>KSA</i>	
CHECKED BY:	
APPROVED BY:	
REVISED:	
NORTH CAROLINA DEPARTMENT OF TRANSPORTATION UTILITIES ENGINEERING SEC. PHONE: (919) 707-6690 FAX: (919) 250-4151 UTILITY CONSTRUCTION PLANS ONLY	
<b>UTILITY CONSTRUCTION</b> DOCUMENT NOT CONSIDERED FINAL UNLESS ALL SIGNATURES COMPLETED	



MATCHLINE -L- STA. 162+00.00  
 MATCH TO SHEET UC-16

MATCHLINE -L- STA. 176+00.00  
 MATCH TO SHEET UC-18



VALLEY BROOK MOBILE HOME PARK, LLC BK 773 PG 357 CAB B SLOT 369-A  
 HANK A. ROSS BK 872/PG 904  
 RALPH DEAN HOSS BK 410 PG 821  
 STEVEN M. ROSS AND ELAINE G. ROSS, CO-TRUSTEES BK 907 PG 1744 BK 484 PG 1786 BK 483 PG 2623  
 NANCY HALL OWENBY BK 413 PG T34  
 DONALD EUGENE RITTENHOUSE BK 924 PG 2067 CAB B SLOT 395D  
 LEVERITT HOLDINGS, LLC BK 108 PG 1454 CAB B SLOT 395-D  
 ABG 19, LLC BK 987 PG 265 CAB C SLOT 1766  
 ANNA ROOT HOWELL TRUSTEE BK 882 PG 1375 CAB C SLOT 2766  
 FIREFLY MOUNTAIN PROPERTIES, LLC BK 333 PG 2098  
 JAMES W. RUMSEY BK 441 PG 579