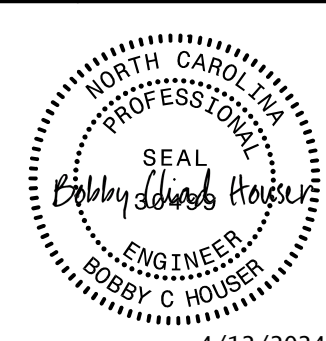
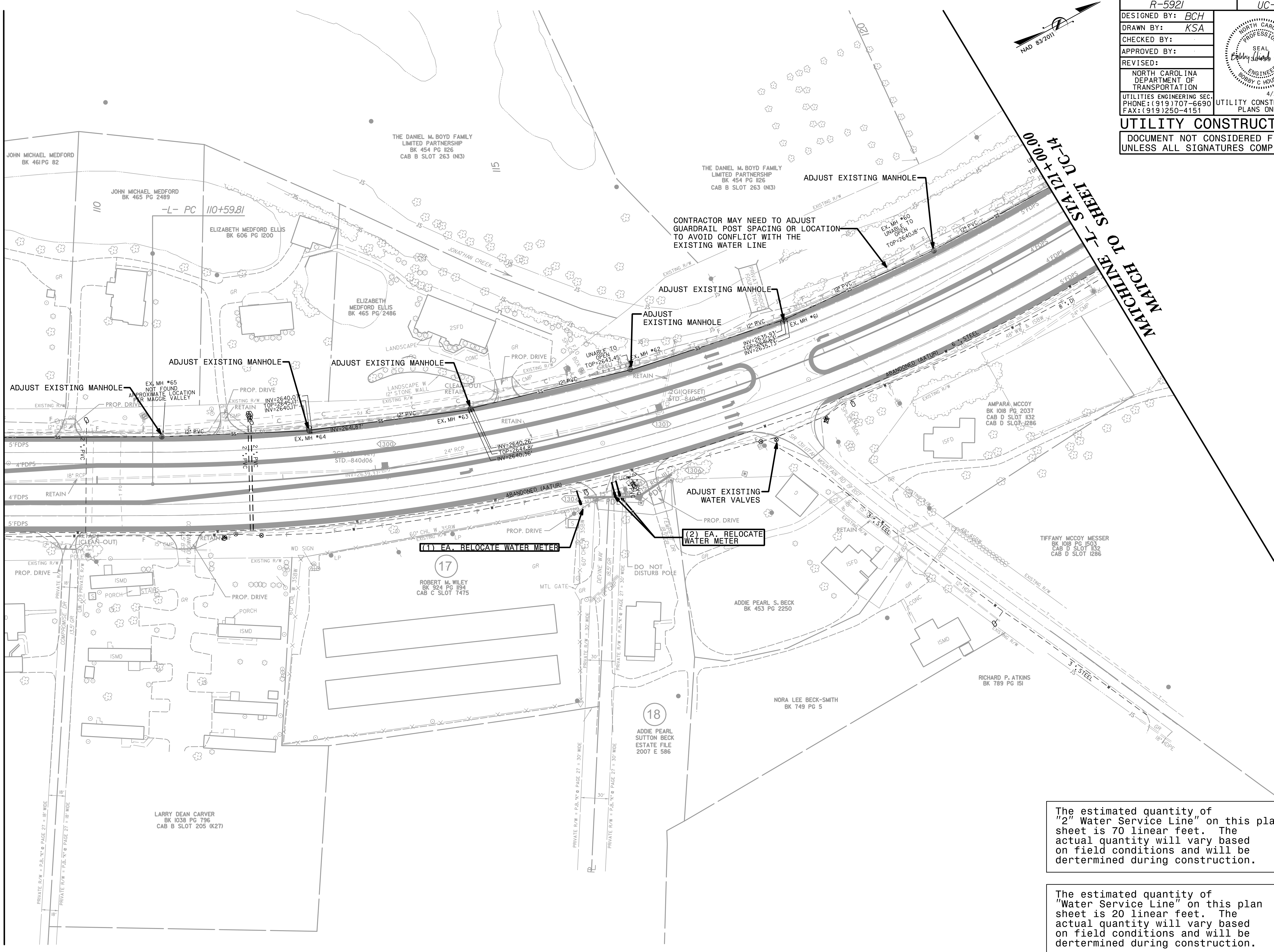


PROJECT REFERENCE NO. <i>R-5921</i>	SHEET NO. <i>UC-13</i>
DESIGNED BY: <i>BCH</i>	
DRAWN BY: <i>KSA</i>	
CHECKED BY:	
APPROVED BY:	
REVISED:	4/12/2024
NORTH CAROLINA DEPARTMENT OF TRANSPORTATION UTILITIES ENGINEERING SEC. PHONE: (919) 707-6690 FAX: (919) 250-4151 UTILITY CONSTRUCTION PLANS ONLY	
UTILITY CONSTRUCTION DOCUMENT NOT CONSIDERED FINAL UNLESS ALL SIGNATURES COMPLETED	

MATCHLINE -L- STA. 109 + 00.00
MATCH TO SHEET UC-12



The estimated quantity of "2" Water Service Line" on this plan sheet is 70 linear feet. The actual quantity will vary based on field conditions and will be determined during construction.

The estimated quantity of "Water Service Line" on this plan sheet is 20 linear feet. The actual quantity will vary based on field conditions and will be determined during construction.