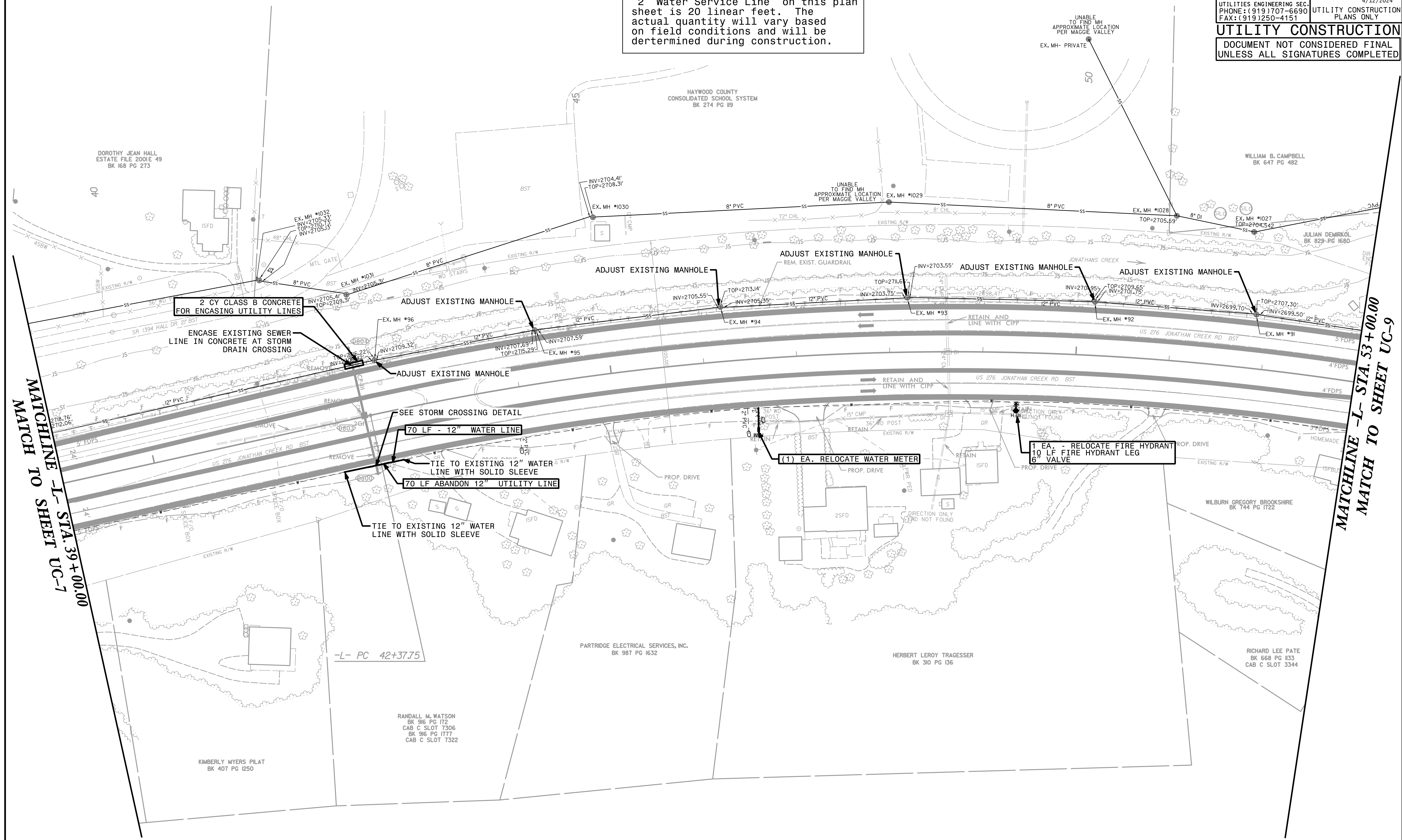


| | |
|--|--------------------------|
| PROJECT REFERENCE NO. <i>R-5921</i> | SHEET NO. <i>UC-8</i> |
| DESIGNED BY: <i>BCH</i> | |
| DRAWN BY: <i>KSA</i> | |
| CHECKED BY: | |
| APPROVED BY: | |
| REVISED: | |
| NORTH CAROLINA DEPARTMENT OF TRANSPORTATION UTILITIES ENGINEERING SEC. PHONE: (919) 707-6690 FAX: (919) 250-4151 UTILITY CONSTRUCTION PLANS ONLY | |
| UTILITY CONSTRUCTION DOCUMENT NOT CONSIDERED FINAL UNLESS ALL SIGNATURES COMPLETED | |

The estimated quantity of Ductile Iron Water Pipe Fitting on this plan sheet is 1,150 pounds. The actual quantity and type of fittings will vary based on field conditions.

The estimated quantity of "2" Water Service Line" on this plan sheet is 20 linear feet. The actual quantity will vary based on field conditions and will be determined during construction.



MATCHLINE -L- STA. 39 + 00.00
MATCH TO SHEET UC-7

MATCHLINE -L- STA. 53 + 00.00
MATCH TO SHEET UC-9

2 CY CLASS B CONCRETE FOR ENCASING UTILITY LINES

ENCASE EXISTING SEWER LINE IN CONCRETE AT STORM DRAIN CROSSING

SEE STORM CROSSING DETAIL

70 LF - 12" WATER LINE

TIE TO EXISTING 12" WATER LINE WITH SOLID SLEEVE

70 LF ABANDON 12" UTILITY LINE

TIE TO EXISTING 12" WATER LINE WITH SOLID SLEEVE

(1) EA. RELOCATE WATER METER

(1) EA. - RELOCATE FIRE HYDRANT
10 LF FIRE HYDRANT LEG
6" VALVE

DOROTHY JEAN HALL
ESTATE FILE 2001E 49
BK 168 PG 273

HAYWOOD COUNTY
CONSOLIDATED SCHOOL SYSTEM
BK 274 PG 119

WILLIAM B. CAMPBELL
BK 647 PG 482

JULIAN DEMIRKOL
BK 829-PG 1680

PARTRIDGE ELECTRICAL SERVICES, INC.
BK 987 PG 1632

HERBERT LEROY TRAGESSE
BK 310 PG 136

RICHARD LEE PATE
BK 668 PG 133
CAB C SLOT 3344

RANDALL M. WATSON
BK 916 PG 172
CAB C SLOT 7306
BK 916 PG 1777
CAB C SLOT 7322

KIMBERLY MYERS PILAT
BK 407 PG 1250

-L- PC 42+37.75