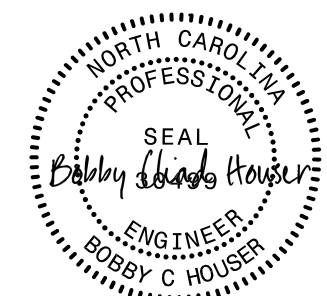
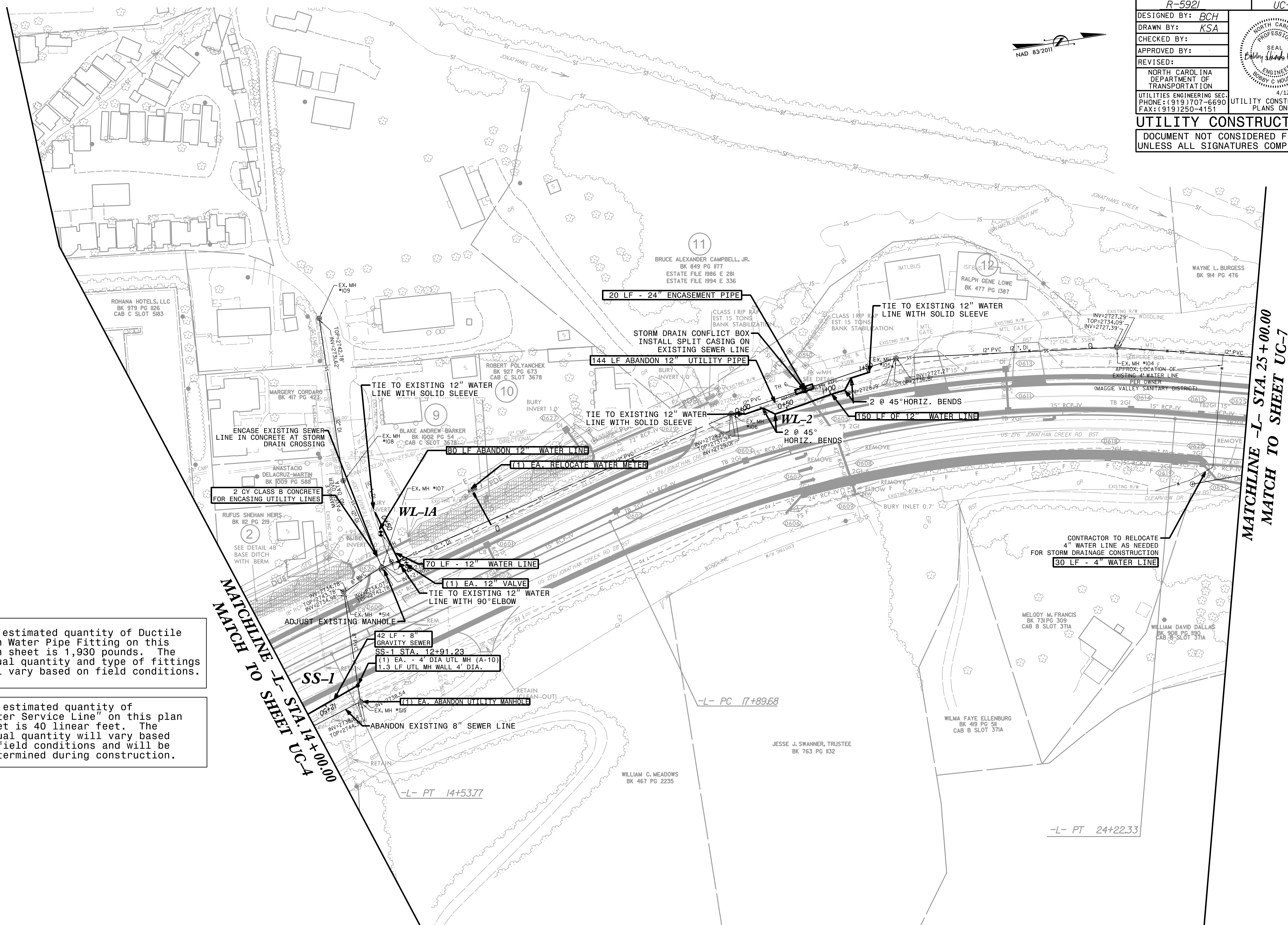


PROJECT REFERENCE NO.	SHEET NO.
R-5921	UC-6
DESIGNED BY: BCH	
DRAWN BY: KSA	
CHECKED BY:	
APPROVED BY:	
REVISED:	
NORTH CAROLINA DEPARTMENT OF TRANSPORTATION UTILITIES ENGINEERING SEC. PHONE: (919) 707-6690 FAX: (919) 250-4151 UTILITY CONSTRUCTION PLANS ONLY	
UTILITY CONSTRUCTION DOCUMENT NOT CONSIDERED FINAL UNLESS ALL SIGNATURES COMPLETED	



The estimated quantity of Ductile Iron Water Pipe Fitting on this plan sheet is 1,930 pounds. The actual quantity and type of fittings will vary based on field conditions.

The estimated quantity of "Water Service Line" on this plan sheet is 40 linear feet. The actual quantity will vary based on field conditions and will be determined during construction.

MATCHLINE J- STA. 14+00.00
 MATCH TO SHEET UC-4

MATCHLINE -L- STA. 25+00.00
 MATCH TO SHEET UC-7