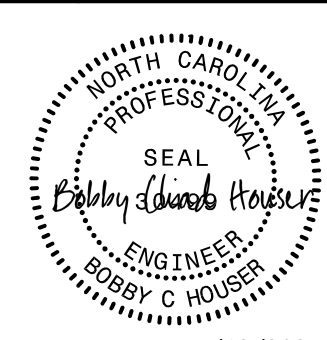


PROJECT REFERENCE NO.	SHEET NO.
R-5921	UC-5
DESIGNED BY: BCH	
DRAWN BY: KSA	
CHECKED BY:	
APPROVED BY:	
REVISED:	
NORTH CAROLINA DEPARTMENT OF TRANSPORTATION	
UTILITIES ENGINEERING SEC. PHONE: (919) 707-6690 FAX: (919) 250-4151	4/12/2024 UTILITY CONSTRUCTION PLANS ONLY
UTILITY CONSTRUCTION	
DOCUMENT NOT CONSIDERED FINAL UNLESS ALL SIGNATURES COMPLETED	

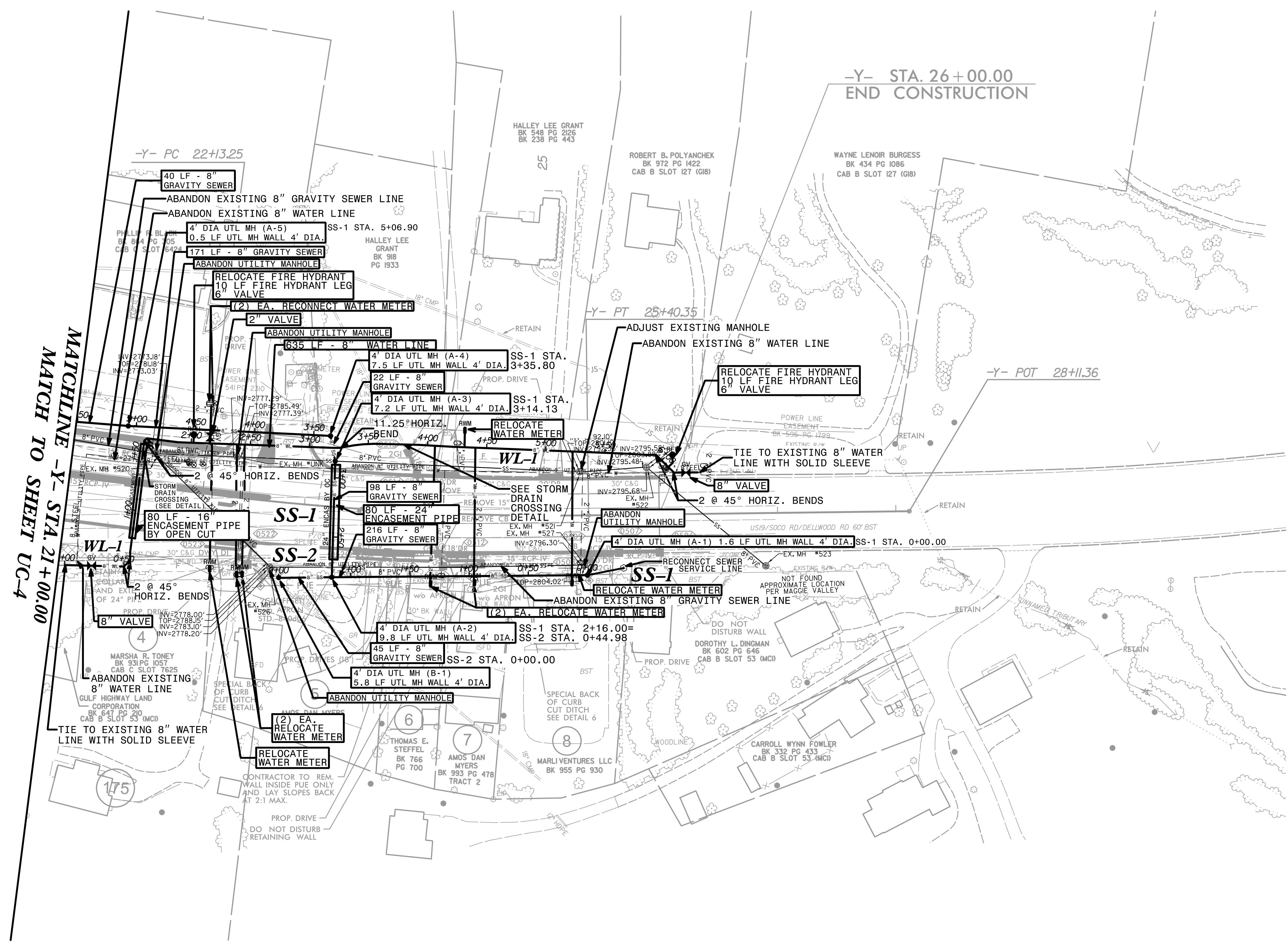


The estimated quantity of Ductile Iron Water Pipe Fitting on this plan sheet is 940 pounds. The actual quantity and type of fittings will vary based on field conditions.

The estimated quantity of "Water Service Line" on this plan sheet is 20 linear feet. The actual quantity will vary based on field conditions and will be determined during construction.

The estimated quantity of "Sewer Service Line" on this plan sheet is 30 linear feet. The actual quantity will vary based on field conditions and will be determined during construction.

The estimated quantity of "2" Water Service Line" on this plan sheet is 720 linear feet. The actual quantity will vary based on field conditions and will be determined during construction.



MATCHLINE -Y- STA. 21+00.00
MATCH TO SHEET UC-4

-Y- STA. 26+00.00
END CONSTRUCTION