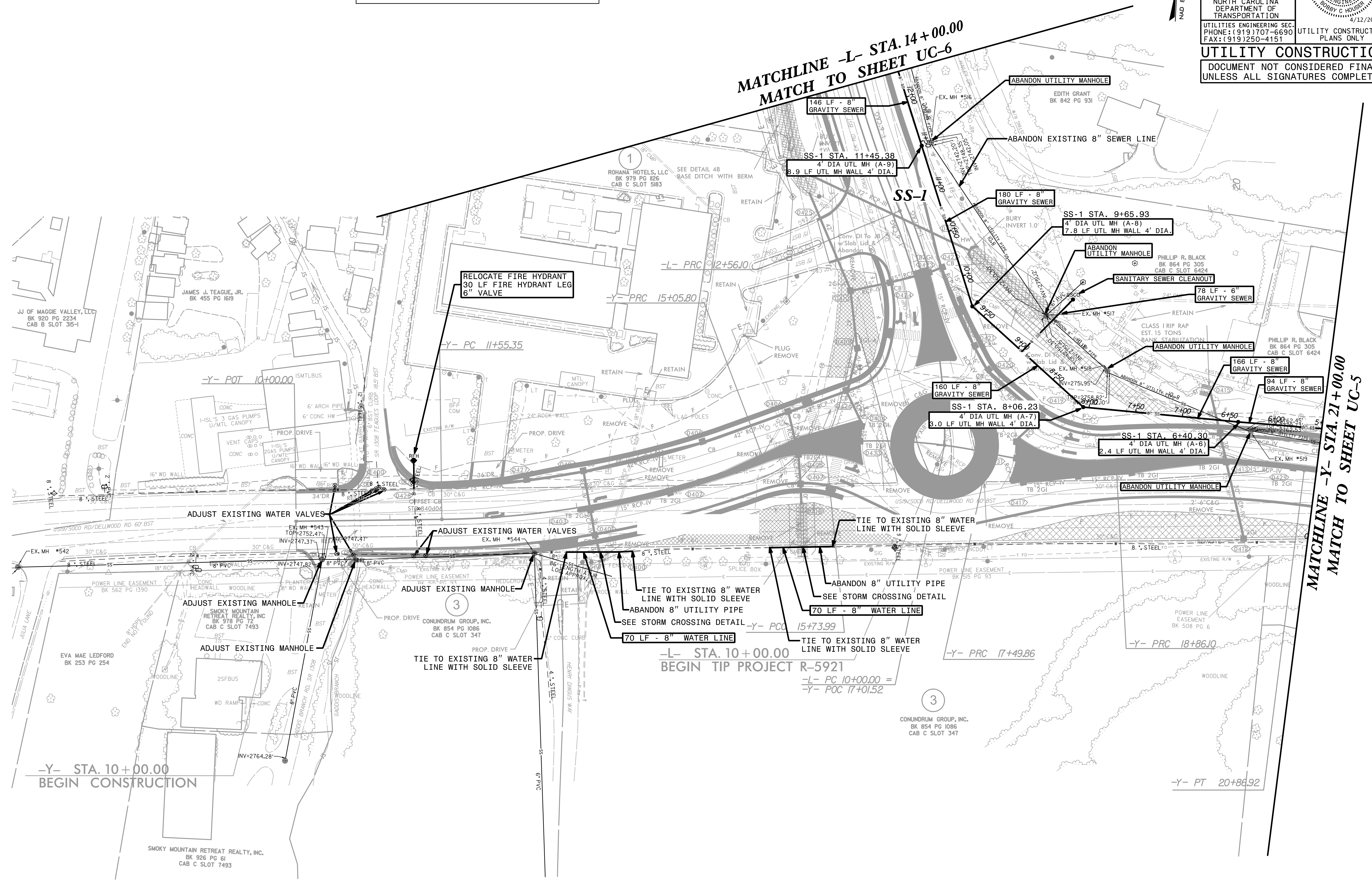


The estimated quantity of Ductile Iron Water Pipe Fitting on this plan sheet is 1,395 pounds. The actual quantity and type of fittings will vary based on field conditions.

PROJECT REFERENCE NO.	SHEET NO.
R-5921	UC-4
DESIGNED BY: BCH	
DRAWN BY: KSA	
CHECKED BY:	
APPROVED BY:	
REVISED:	
NORTH CAROLINA DEPARTMENT OF TRANSPORTATION	
UTILITIES ENGINEERING SEC. PHONE: (919) 707-6690 FAX: (919) 250-4151	
UTILITY CONSTRUCTION PLANS ONLY	
UTILITY CONSTRUCTION	
DOCUMENT NOT CONSIDERED FINAL UNLESS ALL SIGNATURES COMPLETED	



MATCHLINE -L- STA. 14+00.00
MATCH TO SHEET UC-6

MATCHLINE -Y- STA. 21+00.00
MATCH TO SHEET UC-5

-Y- STA. 10+00.00
BEGIN CONSTRUCTION

-L- STA. 10+00.00
BEGIN TIP PROJECT R-5921
-L- PC 10+00.00 =
-Y- POC 17+01.52

3
CONLDRUM GROUP, INC.
BK 854 PG 1086
CAB C SLOT 347