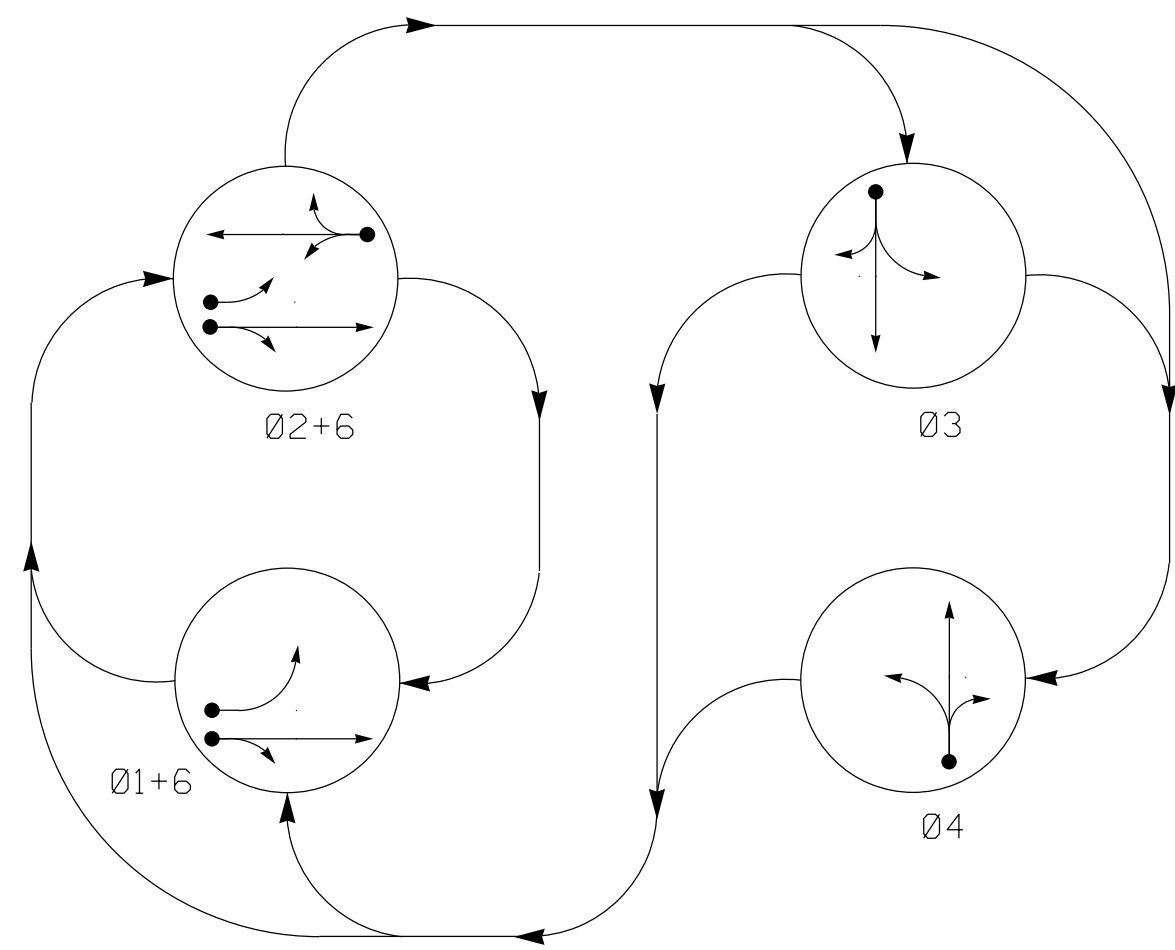


PHASING DIAGRAM

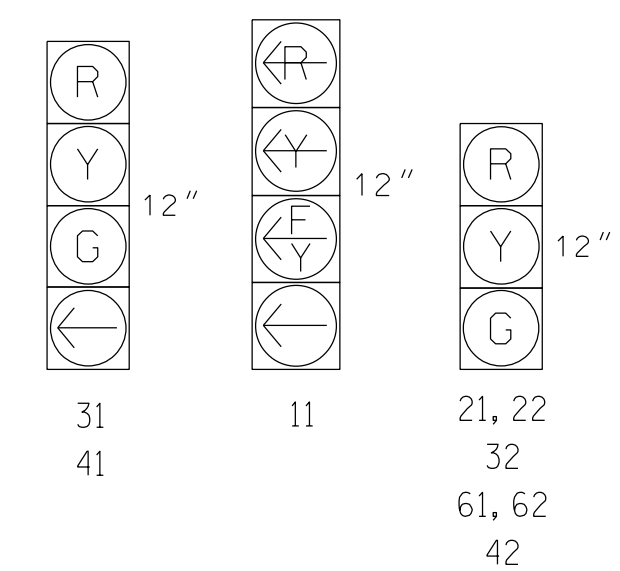


PHASING DIAGRAM DETECTION LEGEND

- DETECTED MOVEMENT
- ← UNDETECTED MOVEMENT (OVERLAP)
- UNSIGNALIZED MOVEMENT
- ↔ PEDESTRIAN MOVEMENT

SIGNAL FACE	PHASE				
	Ø 1 + 6	Ø 2 + 6	Ø 3	Ø 4	FLASH
11	←	→	←	→	→
21, 22	R	G	R	R	Y
31	R	R	G	R	R
32	R	R	G	R	R
41	R	R	R	G	R
42	R	R	R	G	R
61, 62	G	G	R	R	Y

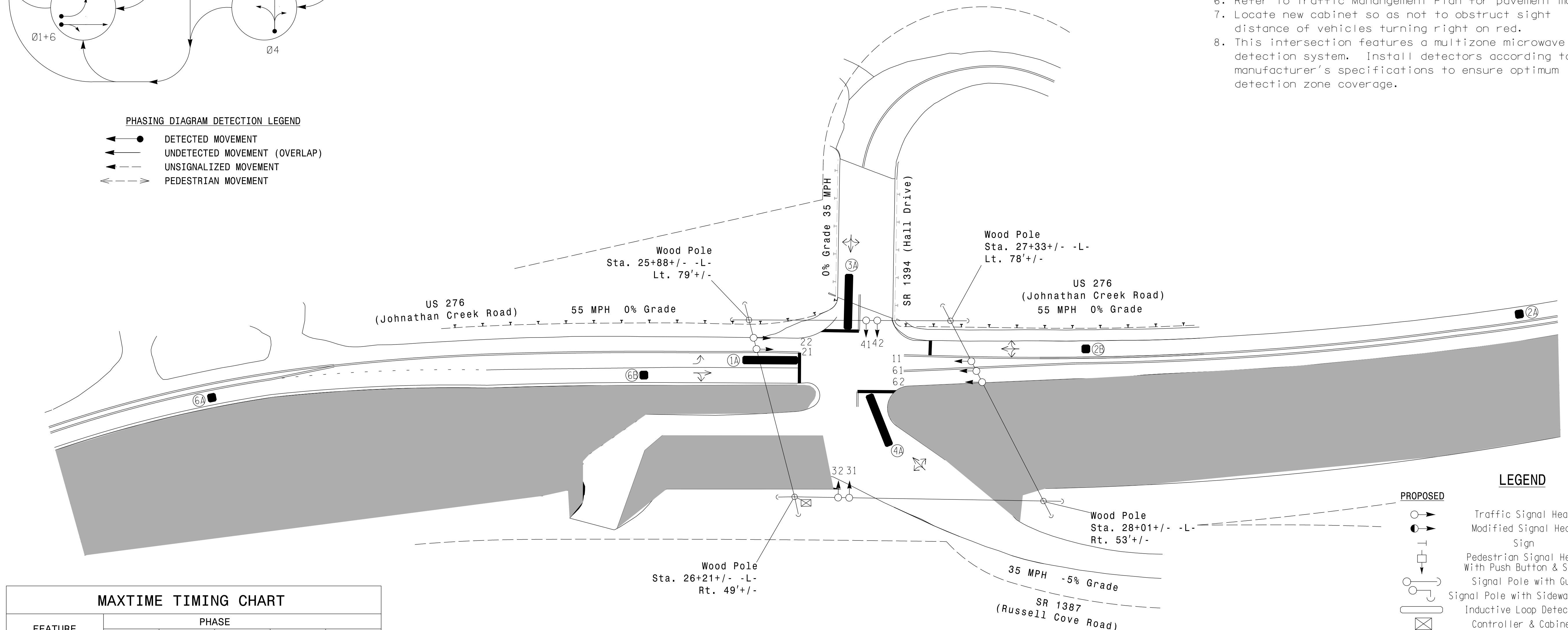
SIGNAL FACE I.D.
All Heads L.E.D.



4 Phase Fully Actuated Isolated

NOTES

- Refer to "Roadway Standard Drawings NCDOT" dated January 2024 and "Standard Specifications for Roads and Structures" dated January 2024.
- Do not program signal for late night flashing operation unless otherwise directed by the Engineer.
- Phase 1 may be lagged.
- The order of phase 3 and phase 4 may be reversed.
- Set all detector units to presence mode.
- Refer to Traffic Management Plan for pavement markings.
- Locate new cabinet so as not to obstruct sight distance of vehicles turning right on red.
- This intersection features a multizone microwave detection system. Install detectors according to manufacturer's specifications to ensure optimum detection zone coverage.



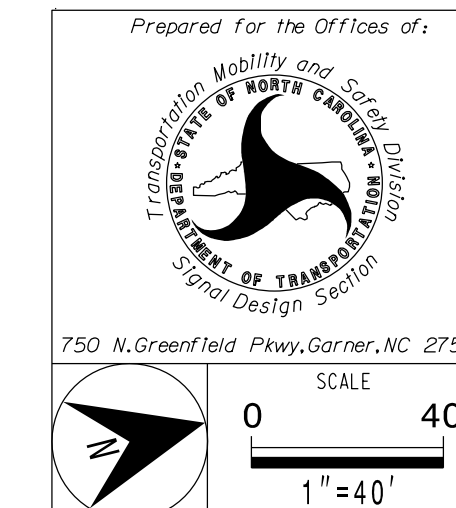
FEATURE	PHASE					
	1	2	3	4	6	
Walk *	-	-	-	-	-	
Ped Clear	-	-	-	-	-	
Min Green *	7	14	7	7	14	
Passage *	2.0	2.0	2.0	2.0	2.0	
Max 1 *	35	90	45	45	90	
Yellow Change	3.0	5.2	3.8	4.2	5.2	
Red Clear	1.8	1.0	1.1	1.0	1.0	
Added Initial *	-	-	-	-	-	
Maximum Initial *	-	-	-	-	-	
Time Before Reduction *	-	-	-	-	-	
Time To Reduce *	-	-	-	-	-	
Minimum Gap	-	-	-	-	-	
Advance Walk	-	-	-	-	-	
Non Lock Detector	X	-	X	X	-	
Vehicle Recall	-	MIN RECALL	-	-	MIN RECALL	
Dual Entry	-	-	-	-	-	

MAXTIME DETECTOR INSTALLATION CHART												
DETECTOR				PROGRAMMING								
LOOP	SIZE (FT)	DISTANCE FROM STOPBAR (FT)	TURNS	NEW LOOP	CALL PHASE	DELAY TIME	EXTEND TIME	EXTEND	ADDED INITIAL	CALL	DELAY DURING GREEN	NEW CARD
1A	*	0	*	*	1	15.0	-	X	-	X	-	*
2A	*	420	*	*	2	-	2.2	X	-	X	-	*
2B	*	110	*	*	2	-	-	X	-	X	-	*
3A	*	0	*	*	3	3.0	-	X	-	X	-	*
4A	*	0	*	*	4	3.0	-	X	-	X	-	*
6A	*	420	*	*	6	-	2.2	X	-	X	-	*
6B	*	110	*	*	6	-	-	X	-	X	-	*

* Multizone Microwave Detection Zones

PROPOSED		EXISTING	
○→	Traffic Signal Head	●→	N/A
○→	Modified Signal Head	○→	N/A
○→	Sign	○→	N/A
○→	Pedestrian Signal Head With Push Button & Sign	○→	N/A
○→	Signal Pole with Guy	○→	N/A
○→	Signal Pole with Sidewalk Guy	○→	N/A
○→	Inductive Loop Detector	○→	N/A
○→	Controller & Cabinet	○→	N/A
○→	Junction Box	○→	N/A
○→	2-in Underground Conduit	○→	N/A
N/A	Right of Way	N/A	N/A
→	Directional Arrow	→	N/A
▬	Multizone Microwave Detection	N/A	N/A
▬	Construction Area	N/A	N/A
▬	Guard Rail	N/A	N/A

Signal Upgrade-Temporary Design 1 (TCP Phase II)



US 276 (Johnathan Creek Road) at SR 1387 (Russell Cove Road) / SR 1394 (Hall Drive)	
Division 14 Haywood County	Dellwood
PLAN DATE: April 2024	REVIEWED BY: M. L. Stygles
PREPARED BY: J. Ma	REVIEWED BY: J. L. Lewis
REVISIONS	INIT. DATE

DOCUMENT NOT CONSIDERED FINAL UNLESS ALL SIGNATURES COMPLETED

