
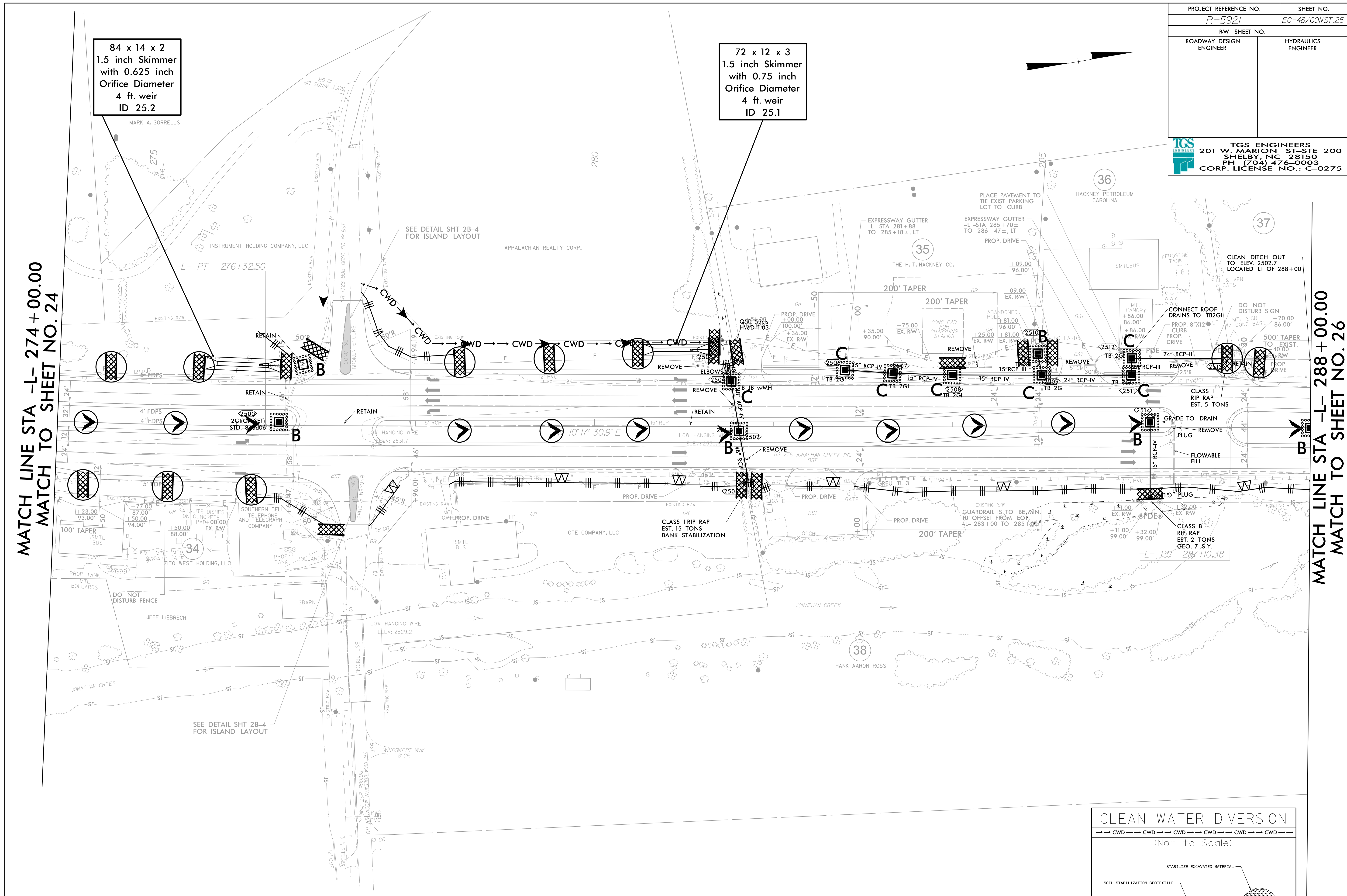


PROJECT REFERENCE NO. <i>R-5921</i>	SHEET NO. <i>EC-48/CONST.25</i>
RW SHEET NO.	
ROADWAY DESIGN ENGINEER	HYDRAULICS ENGINEER
 TGS ENGINEERS 201 W. MARION ST. STE 200 SHELBY, NC 28150 PH (704) 476-0003 CORP. LICENSE NO.: C-0275	

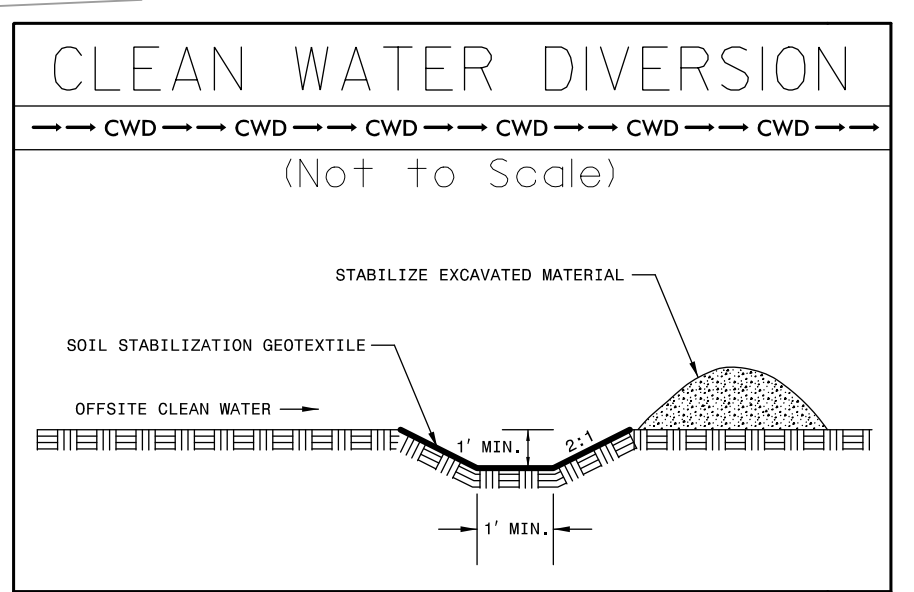
MATCH LINE STA -L- 274+00.00
MATCH TO SHEET NO. 24

MATCH LINE STA -L- 288+00.00
MATCH TO SHEET NO. 26



84 x 14 x 2
1.5 inch Skimmer
with 0.625 inch
Orifice Diameter
4 ft. weir
ID 25.2

72 x 12 x 3
1.5 inch Skimmer
with 0.75 inch
Orifice Diameter
4 ft. weir
ID 25.1



IN LIEU OF ROCK INLET SEDIMENT TRAP, UTILIZE FABRIC INSERT INLET PROTECTION OR OTHER APPROVED DEVICE IN AREAS WHERE WATER MAY POND ON ROAD OPEN TO LIVE TRAFFIC.

Place Matting for Erosion Control on Slopes Adjacent to Permitted Wetlands as Work Allows.