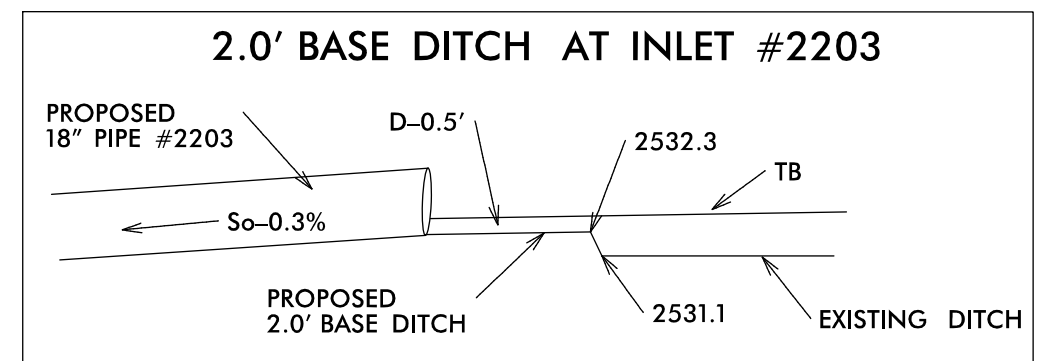
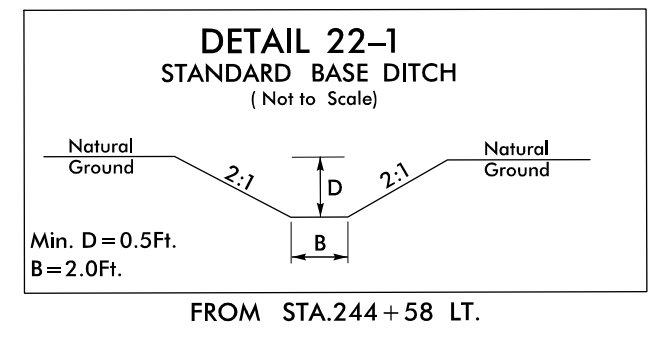


PROJECT REFERENCE NO. R-5921	SHEET NO. EC-45/CONST.22
RW SHEET NO.	
ROADWAY DESIGN ENGINEER	HYDRAULICS ENGINEER
<b>TGS ENGINEERS</b> 201 W. MARION ST. STE 200 SHELBY, NC 28150 PH (704) 476-0003 CORP. LICENSE NO.: C-0275	



IN LIEU OF ROCK INLET SEDIMENT TRAP, UTILIZE FABRIC INSERT INLET PROTECTION OR OTHER APPROVED DEVICE IN AREAS WHERE WATER MAY POND ON ROAD OPEN TO LIVE TRAFFIC.



MATCH LINE STA -L- 232+00.00  
MATCH TO SHEET NO.21

MATCH LINE STA -L- 246+00.00  
MATCH TO SHEET NO.23

